

Cancer Research

Chemopreventive Properties of Black Raspberries in *N*-Nitrosomethylbenzylamine-Induced Rat Esophageal Tumorigenesis: Down-regulation of Cyclooxygenase-2, Inducible Nitric Oxide Synthase, and *c-Jun*

Tong Chen, Hyejeong Hwang, Miranda E. Rose, et al.

Cancer Res 2006;66:2853-2859. Published online March 1, 2006.

Updated Version Access the most recent version of this article at:
doi:[10.1158/0008-5472.CAN-05-3279](https://doi.org/10.1158/0008-5472.CAN-05-3279)

Cited Articles This article cites 52 articles, 24 of which you can access for free at:
<http://cancerres.aacrjournals.org/content/66/5/2853.full.html#ref-list-1>

Citing Articles This article has been cited by 16 HighWire-hosted articles. Access the articles at:
<http://cancerres.aacrjournals.org/content/66/5/2853.full.html#related-urls>

E-mail alerts [Sign up to receive free email-alerts](#) related to this article or journal.

Reprints and Subscriptions To order reprints of this article or to subscribe to the journal, contact the AACR Publications Department at pubs@aacr.org.

Permissions To request permission to re-use all or part of this article, contact the AACR Publications Department at permissions@aacr.org.

Chemopreventive Properties of Black Raspberries in *N*-Nitrosomethylbenzylamine-Induced Rat Esophageal Tumorigenesis: Down-regulation of Cyclooxygenase-2, Inducible Nitric Oxide Synthase, and *c-Jun*

Tong Chen, Hyejeong Hwang, Miranda E. Rose, Ronald G. Nines, and Gary D. Stoner

Cancer Chemoprevention Program, Division of Hematology and Oncology, Department of Internal Medicine, College of Medicine and Public Health, The Ohio State University, Columbus, Ohio

Abstract

Our laboratory has used a rodent model of human esophageal squamous cell carcinoma to identify putative chemopreventive agents for this disease and to determine their mechanisms of action. In the present study, we treated F344 rats with the esophageal carcinogen, *N*-nitrosomethylbenzylamine (NMBA), thrice per week for 5 weeks. Beginning 1 week later, they were fed a synthetic diet containing 5% black raspberries (BRB) for the duration of the bioassay (25 weeks). Rats were sacrificed at weeks 9, 15, and 25. Esophageal tissues were collected, and tumor data were recorded. The expression and enzymatic activities of cyclooxygenase-2 (COX-2) and inducible nitric oxide synthase (iNOS) as well as the expression of *c-Jun* in the esophagi, were evaluated to investigate the mechanism(s) by which black raspberries modulate tumorigenesis. At week 25, BRB inhibited tumor multiplicity, the standard end point in this tumor model, from 3.78 ± 0.41 tumors per rat in NMBA-treated animals to 2.23 ± 0.21 tumors per rat in animals treated with NMBA plus BRB ($P < 0.005$). BRB reduced mRNA and protein expression levels of COX-2, iNOS, and *c-Jun* as well as the level of prostaglandin E_2 in preneoplastic lesions of the esophagus at week 25. The berries inhibited mRNA expression of iNOS and *c-Jun*, but not COX-2, in papillomatous lesions of the esophagus. Prostaglandin E_2 and total nitrite levels were also decreased by BRB in papillomas. These results suggest a novel tumor suppressive role of BRB through inhibition of COX-2, iNOS, and *c-Jun*. (Cancer Res 2006; 66(5): 2853-9)

Introduction

Cancer is the second leading cause of death after heart disease for Americans. The American Cancer Society estimates that 570,280 Americans will die of cancer in 2005. About 30% of these deaths will be related to nutritional imbalance, physical inactivity, and obesity, and thus, are preventable (1). Esophageal squamous cell carcinoma (SCC) is one of the most common malignant neoplasms worldwide. The incidence rate of this disease varies dramatically in different geographic areas of the world; the highest incidence is in the "esophageal cancer belt," which includes areas in eastern Turkey, the former Soviet Union, Iraq, Iran, China, Japan, South

Africa, and France (2). The overall 5-year survival rate for this disease is low, ranging from 5% to 15%.

Esophageal SCC has a complex etiology. In the Western world, tobacco use and alcohol consumption are the major etiologic factors. In the Far East, in addition to the use of tobacco and alcohol, the disease is associated with the intake of salty food and food contaminated with various mycotoxins, deficiencies in dietary vitamins and minerals, and thermal injuries due to the consumption of hot beverages. Nitrosamine carcinogens also seem to be important causative agents of esophageal SCC (3). Among these is the carcinogen, *N*-nitrosomethylbenzylamine (NMBA), which is present in the diet in China. NMBA is an asymmetrical nitrosamine that readily induces mutagenic, toxic, and carcinogenic effects in esophageal tissues and is the most potent nitrosamine carcinogen for the rat esophagus (4, 5). In Linxian, China, the region with the highest incidence of esophageal SCC in the world, NMBA was identified in pickled vegetables and its metabolism has been elucidated (6, 7).

The inducible isoform of nitric oxide synthase (iNOS) is an enzyme that catalyzes the conversion of L-arginine to citrulline resulting in the production of nitric oxide (NO; ref. 8). NO is a free radical with an unpaired electron; it can donate or accept an electron to become a nitrosonium cation (NO^+) or a nitroxyl anion (NO^-), which leads to nitrosative stress or oxidative stress, respectively. Nitrosative stress can lead to the formation of nitrosamine carcinogens, deamination of DNA bases, and inactivation of DNA repair proteins, all actions contributing to carcinogenesis. Similarly, oxidative stress can lead to the formation of peroxynitrite ($ONOO^-$), which can damage DNA and lead to carcinogenesis. NO is synthesized in mammalian cells by a family of three NO synthases: nNOS, eNOS, and iNOS. nNOS and eNOS are constitutively present in neurons and endothelial cells, respectively. These isoforms are calcium-dependent and produce only a low level of NO. In contrast, iNOS is calcium- and calmodulin-independent, and when induced by cytokines or other factors, generates a high concentration of NO. Up-regulation of iNOS has been reported in several types of cancer including breast, head and neck, lung, colon, melanoma, prostate, as well as esophageal SCC (9–16).

Prostaglandin endoperoxide synthase, also called cyclooxygenase (COX), catalyzes the formation of prostanoids including prostaglandins A_2 , D_2 , E_2 , $F_{2\alpha}$, I_2 , and J_2 and thromboxane A_2 (17). Two COX isoforms have been cloned: COX-1 and COX-2. COX-1 is constitutively expressed in most mammalian cells and is responsible for homeostasis of normal physiologic functions. COX-2 is expressed in response to certain stimuli such as growth factors, tumor promoters, hormones, and cytokines. COX-2 is important for tumorigenesis because prostaglandins, especially prostaglandin

Requests for reprints: Gary Stoner, Cancer Chemoprevention and Support Program, Division of Hematology and Oncology, Department of Internal Medicine, College of Medicine and Public Health, The Ohio State University, CHRI Suite 1141, 300 West 10th Avenue, Columbus, OH 43210. Phone: 614-293-6228; Fax: 614-293-4072; E-mail: gary.stoner@osumc.edu.

©2006 American Association for Cancer Research.
doi:10.1158/0008-5472.CAN-05-3279

E₂ (PGE₂), affect cell proliferation, differentiation, apoptosis, angiogenesis, and metastasis (18). Up-regulation of COX-2 has been detected in various cancers including colon, gastric epithelium, breast, skin, pancreas, lung, head and neck, urinary bladder, and esophageal SCC (19–27). Clinical cancer chemoprevention studies indicated that COX-2 is a valid target for cancer prevention with the COX-2 inhibitor, celecoxib. Celecoxib significantly reduced the number of colon polyps in patients with familial adenomatous polyposis compared with placebo (28). Other nonsteroidal anti-inflammatory drugs including COX-2-selective and COX-2-nonselective inhibitors, such as aspirin, piroxicam, and sulindac, also exhibit chemopreventive potential in animal and human studies (29–31).

Expression of iNOS and COX-2 is controlled by transcription factors including the activator protein (AP-1) complex. AP-1 is composed of the Jun family (*c-Jun*, *Jun-B*, and *Jun-D*) and the Fos family (*c-Fos*, *Fos-B*, *Fra-1*, and *Fra-2*), which regulate the expression of iNOS and COX-2 by binding to their promoter sequences (32, 33). AP-1 regulates various cellular events including cell proliferation, differentiation, and apoptosis (34). *c-Jun* is a major component of AP-1, it is up-regulated in transformed cell lines and human cancers and is induced by activated Ras oncogenic proteins (35–37). The Ras family of proteins (H-, N-, and K-ras) bind to GTP to form ras-GTP complexes that regulate signal transduction pathways induced by diverse extracellular signals including carcinogens that induce esophageal cancer (38).

Our laboratory reported the overexpression of iNOS and COX-2 mRNAs in preneoplastic lesions and in papillomas induced in the rat esophagus by NMBA. Overexpression of iNOS and COX-2 is associated with increases in the tissue content of nitrite/nitrate and PGE₂, respectively (16, 39, 40). We also observed Ha-ras codon 12 G → A transition mutations in all papillomas during esophageal carcinogenesis in rats (41). In view of these results, we conducted the present study to determine whether dietary freeze-dried black raspberries (BRB) inhibit tumor development in the rat esophagus by modulating iNOS, COX-2, and *c-Jun*.

Materials and Methods

Chemicals and reagent kits. NMBA was obtained from Ash Stevens (Detroit, MI) and determined to be >98% pure by high-performance liquid chromatography. DMSO was purchased from Sigma Chemical, Co. (St. Louis, MO). The QuantiTect SYBR green reverse-transcription PCR (RT-PCR) kit was purchased from Qiagen, Inc. (Valencia, CA). The nitrate/nitrite colorimetric assay kit was purchased from Cayman Chemical Co. (Ann Arbor, MI), and the Prostaglandin E₂ Biotrak Enzyme Immunoassay System from Amersham Biosciences, Corp. (Piscataway, NJ).

Animals, berries, and diets. Male F344 rats, 4 to 5 weeks old, were obtained from Harlan Sprague-Dawley (Indianapolis, IN). The animals were housed three per cage under standard conditions (20 ± 2°C, 50 ± 10% relative humidity, 12-hour light/dark cycles). Food and water were freely available. Hygienic conditions were maintained by twice-weekly cage changes and routine cleaning of the animal rooms. The animals were fed a modified American Institute of Nutrition-76A (AIN-76A) synthetic diet containing 20% casein, 0.3% D,L-methionine, 52% cornstarch, 13% dextrose, 5% cellulose, 5% corn oil, 3.5% AIN salt mixture, 1% AIN vitamin mixture, and 0.2% choline bitartrate (Dyets, Inc., Bethlehem, PA). The diet was stored routinely at 4°C before the preparation of experimental diets.

Ripened black raspberries (Jewel variety) were purchased from the Stokes Raspberry Farm (Wilmington, OH). The berries were picked mechanically, washed, and placed in a -20°C freezer within an hour of picking. They were then shipped frozen to Van Drunen Farms (Mokena, IL) for freeze-drying and subsequent grinding into a powder (BRB). BRB was shipped frozen to The Ohio State University and kept at -20°C until used. It was analyzed for content of several vitamins, minerals, carotenoids, and simple polyphenols by Covance Laboratories, Inc. (Madison, WI) and for anthocyanins in the laboratory of Dr. Steven Schwartz, College of Food, Agriculture, and Environmental Sciences, The Ohio State University. In general, the contents of berries varied no more than 20% from those of BRB obtained yearly from the same source during the past 8 years.

AIN-76A diet containing 5% BRB was prepared fresh weekly and stored at 4°C. BRB were mixed into the diet (modified by reducing the concentration of cornstarch by 5% to maintain an isocaloric diet) for 25 minutes with a Hobart mixer (Troy, OH). Fresh experimental and control diets were placed in glass feeding jars weekly and fed to the rats.

Experimental procedures. After a 2-week acclimation period to the animal facility, 150 rats were randomly assigned to four experimental groups (Table 1) and placed on AIN-76A diet. Three days after the final NMBA treatment, rats in group 3 were fed the AIN-76A diet only and rats in group 4 were fed the AIN-76A diet containing 5% BRB for the duration of the bioassay. Food consumption and body weight data were recorded weekly. At 9 and 15 weeks, 5 rats from groups 1 and 2 and 10 rats from groups 3 and 4; and, at 25 weeks, 15 rats from groups 1 and 2 and 30 rats from groups 3 and 4, were euthanized by CO₂ asphyxiation and subjected to gross necropsy. The esophagus of each rat was excised and opened longitudinally. Tumors >0.5 mm in a single dimension were counted, mapped, and measured (length, width, and height). Tumor volume was calculated using the formula for a prolate spheroid: length × width × height × π/6. After the tumor data were recorded, tumors were removed from the esophagus and frozen in liquid nitrogen. The epithelium was stripped of the submucosal and muscularis layers and frozen in liquid nitrogen separately. All samples were stored at -80°C until analysis.

Real-time PCR. Total cellular RNA was isolated from frozen tissues using TRizol Reagent (Life Technologies, Gaithersburg, MD) according to the manufacturer's instructions. After extraction, all RNA samples were analyzed for integrity of 18S and 28S rRNA by ethidium bromide staining of 1 µg of RNA resolved by electrophoresis on 1.2% agarose formaldehyde gels.

Table 1. Experimental design for bioassay with BRB

Group	Treatment	No. of rats	Amount administered (ml)	Dose administered (mg/kg body weight)	Diet
1	DMSO + H ₂ O*	25	0.2	0	Control AIN-76A
2	None	25	0	0	AIN-76A + 5% BRB
3	NMBA	50	0.2	0.25 [†]	Control AIN-76A
4	NMBA	50	0.2	0.25	AIN-76A + 5% BRB

*DMSO + H₂O, vehicle for NMBA.

[†]NMBA (0.25 mg/kg body weight) injected s.c. thrice per week for 5 weeks.

Table 2. Nucleotide sequences of the primers used to assay gene expression by real-time reverse transcription PCR

Gene	Forward primer	Reverse primer
<i>iNOS</i>	5'-GCTCGAGATGTCATGAAGGAGAT-3'	5'-AGCAGGT CAGCAAAGA ACTTATAGC-3'
<i>COX-2</i>	5'-CAGCCATGCAGCAAATCCTT-3'	5'-CCAACCCATGTCAAACCGTG GTGAAT-3'
<i>c-Jun</i>	5'-TGCAAAGATGGAACGACCTT-3'	5'-CCACTCTCGGACTGGAGGAA-3'
<i>HPRT</i>	5'-GCTCGAGATGTCATGAAGGAGAT-3'	5'-AGCAGGT CAGCAAAGA ACTTATAGC-3'

One-step real-time reverse-transcription PCR was done in a GeneAmp 5700 sequence detection system (Perkin-Elmer Corp., Norwalk, CT) using the QuantiTect SYBR green RT-PCR kit as described previously (33). Briefly, the reaction of a 50 μ L volume of total cellular RNA, QuantiTect RT Mix, QuantiTect SYBR green RT-PCR Master Mix, and forward and reverse primers were reverse transcribed, and PCR was done after the reverse transcription reaction. The expression of iNOS, COX-2, and *c-Jun* mRNA was normalized against expression of the housekeeping gene, hypoxanthine-guanine phosphoribosyltransferase (*HPRT*). Primers for iNOS, COX-2, *c-Jun*, and *HPRT* were designed according to published sequences with Primer Express Software v2.0 (Applied Biosystems, Foster City, CA). Base sequences are shown in Table 2. Each individual RNA sample for each gene was assayed in triplicate. Two controls were run with every reaction: one contained RNA and QuantiTect RT Mix to detect genomic DNA and the other contained the reaction reagents without RNA to confirm that the reagents displayed no signal. Data were collected using SDS Sequence Detector Software (PE, Applied Biosystems).

Western blot analysis. Proteins were extracted from frozen esophageal epithelium. Protein concentration was determined using the Bio-Rad assay (Bio-Rad, Hercules, CA) according to the manufacturer's recommendations. Fifty micrograms of protein with NuPAGE LDS Sample Buffer and NuPAGE sample reducing agent (Invitrogen, Carlsbad, CA) were heated at 100°C for 1 minute. After cooling at room temperature for 5 minutes, proteins were fractioned by 7% NuPAGE Novex Tris-acetate gel electrophoresis (Invitrogen). Proteins were then transferred to Invitrolon polyvinylidene difluoride membrane. The membrane was blocked with blocking buffer (concentrated saline and Hammersten casein solution) at 4°C overnight. The blot was probed with iNOS (1:200; Santa Cruz Biotechnology, Santa Cruz, CA), COX-2 (1:500, Cayman Chemical), or *c-Jun* (1:200, Santa Cruz Biotechnology) polyclonal antibody at room temperature for 1 hour. After being washed extensively to eliminate nonspecific binding, the membrane was incubated with goat anti-rabbit secondary antibody labeled with alkaline phosphatase at room temperature for 1 hour. The Western blots were visualized using Western Breeze chromogenic immunodetection kit (Invitrogen). β -Actin (1:1,000; Sigma) was detected in the same sample to ensure an equal protein loading.

Nitrate/nitrite colorimetric assay. As described previously (39), frozen esophagi were weighed, homogenized in PBS, and centrifuged. iNOS activity in the supernatant was measured using a nitrate/nitrite colorimetric assay kit according to the manufacturer's instructions. Briefly, 80 μ L supernatant for each sample was transferred to a 96-well optical plate and incubated with 10 μ L nitrate reductase and 10 μ L enzyme cofactor for 3 hours. Griess reagent [sulfanilamide and *N*-(1-naphthyl)ethylenediamine] was added and the absorbance was measured at 550 nm using a SpectraMax M2 multidetection reader (Molecular Devise Corp., Sunnyvale, CA). Standards of sodium nitrate (0-35 μ mol/L) were used to create a standard curve. The final nitrite concentration was the sum of the nitrite plus the reduced nitrate in each sample and was taken as an index of iNOS activity as described previously. Each sample was assayed in triplicate.

PGE₂ enzyme immunoassay. COX-2 activity in esophageal epithelium and papillomas were assayed by using the Biotrak Enzyme Immunoassay System (Amersham Biosciences) to measure PGE₂ concentration. In brief, frozen samples were homogenized in Tris-HCl buffer (pH 7.5) with 0.02 mol/L EDTA and 5 mg/mL indomethacin. Total protein concentration for each tissue homogenate was determined using the DC Protein Assay

(Bio-Rad). PGE₂ was collected and purified according to the manufacturer's instructions. Absorbance was measured at 450 nm using the SpectraMax M2 multidetection reader (Molecular Devise). PGE₂ concentration was normalized against protein concentration in the same sample. Each sample was assayed in triplicate.

Statistical analysis. Body weight, food consumption, tumor multiplicity (mean number of tumors/esophagus), and tumor volume data were collected for all rats fed control or experimental diets. These data—the iNOS, COX-2, and *c-Jun* expression data; total nitrite and nitrate data; and PGE₂ data—were analyzed and compared using one-way ANOVA followed by Dunnett's multiple comparison test to identify individual differences among groups when the ANOVA was significant. Tumor incidence (percentage of animals in each group with tumors) data were analyzed using the χ^2 test. All statistical analysis was carried out using GraphPad Prism 4.0. Differences were considered statistically significant at $P < 0.05$. All P values were two-sided.

Results

General observations. The mean body weights and food consumption in all rats were not significantly different throughout the bioassay (data not shown). No observable gross or histopathologic changes occurred in the lungs, liver, kidneys, small intestine, and colon of rats treated with BRB only. All tumor specimens removed from the esophagus at necropsy were found to be papillomas by histopathologic examination.

BRB inhibits tumor development. At weeks 9 and 15 of the bioassay, <10% to 20% of the esophagi, respectively, had tumors (papillomas). The tumor responses (incidence, multiplicity, and volume) at these time points were too low to determine if BRB treatment produced any inhibitory effects. At the end of the bioassay (week 25), none of the DMSO-treated rats (group 1) or the rats fed 5% BRB (group 2) developed tumors. In rats treated with NMBA, however, BRB reduced the incidence of esophageal tumors from 96% in NMBA controls (group 3) to 89% in rats treated with NMBA + 5% BRB (group 4). This reduction was not significant ($P > 0.05$). In contrast, BRB significantly reduced tumor multiplicity, the standard end point in this tumor model, from 3.78 ± 0.41 tumors per esophagus in group 3 to 2.23 ± 0.21 tumors per esophagus in group 4 ($P < 0.005$; Fig. 1A). The difference in tumor volume between groups 3 and 4 was not significant at 25 weeks (Fig. 1B).

BRB down-regulates mRNA expression of iNOS, COX-2, and c-Jun. We determined if the inhibition of tumor development in NMBA-treated rat esophagus by BRB was associated with modulation of iNOS, COX-2, and *c-Jun* mRNA expression. Real-time reverse transcription-PCR was done on samples of esophageal epithelium collected from 10 animals per group at each of weeks 9 and 15, and on samples of esophageal epithelium and papillomas collected from 28 to 29 animals per group at week 25. By histopathologic analysis, all esophagi collected from solvent-treated rats were classified as normal and those from NMBA-treated rats, after the removal of papillomas, were classified as preneoplastic

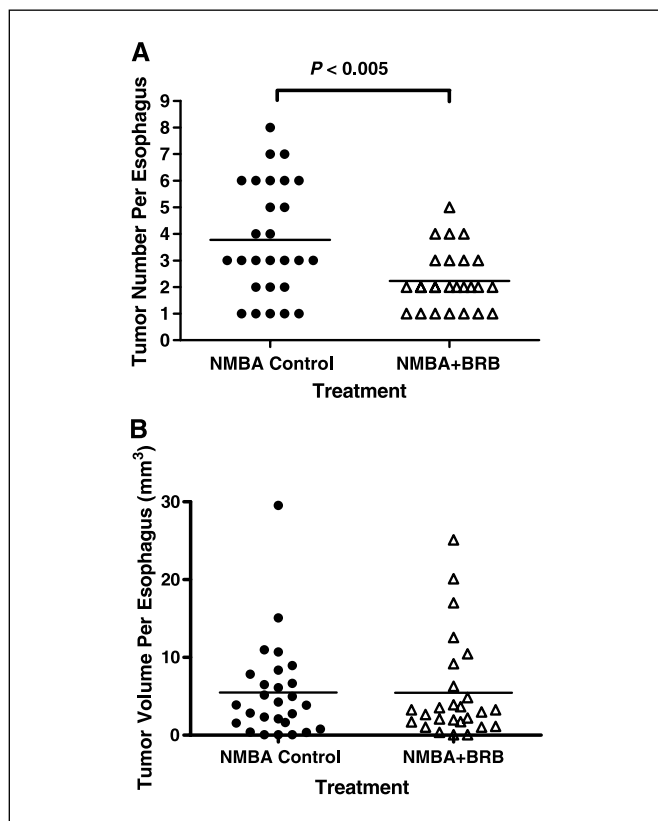


Figure 1. Effect of BRB on tumor development in NMBA-treated rat esophagus at 25 weeks. Rats treated with NMBA + BRB had fewer tumors than rats treated with NMBA only (A); however, there was no significant difference in tumor volume between the two groups of rats (B). ●, NMBA control; △, NMBA+BRB.

(i.e., exhibiting extensive hyperplasia and foci of dysplastic change). Exophytic lesions on the surface of the esophagus that were >0.5 mm in a single dimension were counted as tumors, and all of these tumors were found to be papillomas on histopathologic analysis. The papillomas were removed from the esophagus and stored separately. As shown in Fig. 2A, BRB suppressed the mRNA expression of iNOS in preneoplastic lesions at week 25 (95%, $P < 0.05$) but not at weeks 9 and 15. In contrast, BRB inhibited the mRNA expression of COX-2 in preneoplastic lesions by 64% ($P < 0.05$) and 60% ($P < 0.05$) at both weeks 9 and 25, respectively (Fig. 2B). BRB down-regulated the mRNA expression of *c-Jun* in preneoplastic lesions by 55% ($P < 0.05$) at week 15 and by 48% ($P < 0.05$) at week 25 (Fig. 2C). At 25 weeks, BRB suppressed the mRNA expression of iNOS and *c-Jun* by 60% ($P < 0.05$) and 44% ($P < 0.05$) in papillomas, respectively, but did not reduce the mRNA expression of COX-2 in papillomas (Fig. 2D).

BRB inhibits protein expression of iNOS, COX-2, and *c-Jun*.

Western blot analysis was used to determine whether BRB inhibited iNOS and COX-2 protein in preneoplastic lesions at 25 weeks and, if so, whether this inhibition was associated with modulation of *c-Jun*. As shown in Fig. 3, the NMBA-induced overexpression of iNOS and COX-2 was decreased from 3.6-fold and 2.5-fold in rats fed the control diet to 1.1-fold ($P < 0.005$) and 0.72-fold ($P < 0.005$) in rats fed the BRB diet. BRB also inhibited NMBA-induced expression of *c-Jun* by 36% relative to the control diet ($P < 0.05$).

BRB reduces total nitrite and PGE₂ levels. We also evaluated the effects of dietary BRB on iNOS and COX-2 activities in esophageal tissues collected at 25 weeks by measuring total nitrate

and nitrite levels and PGE₂ levels, respectively, by enzyme immunoassay (Table 3). BRB decreased total nitrate and nitrite levels from 4.40 ± 0.52 to 4.17 ± 0.83 $\mu\text{mol/L}$ (not significant) in preneoplastic lesions, and from 7.66 ± 1.65 to 4.04 ± 1.24 $\mu\text{mol/L}$ in papillomas (47% reduction; $P < 0.05$). PGE₂ levels were reduced in preneoplastic lesions from 3.05 ± 0.59 $\mu\text{g/mg}$ protein in rats

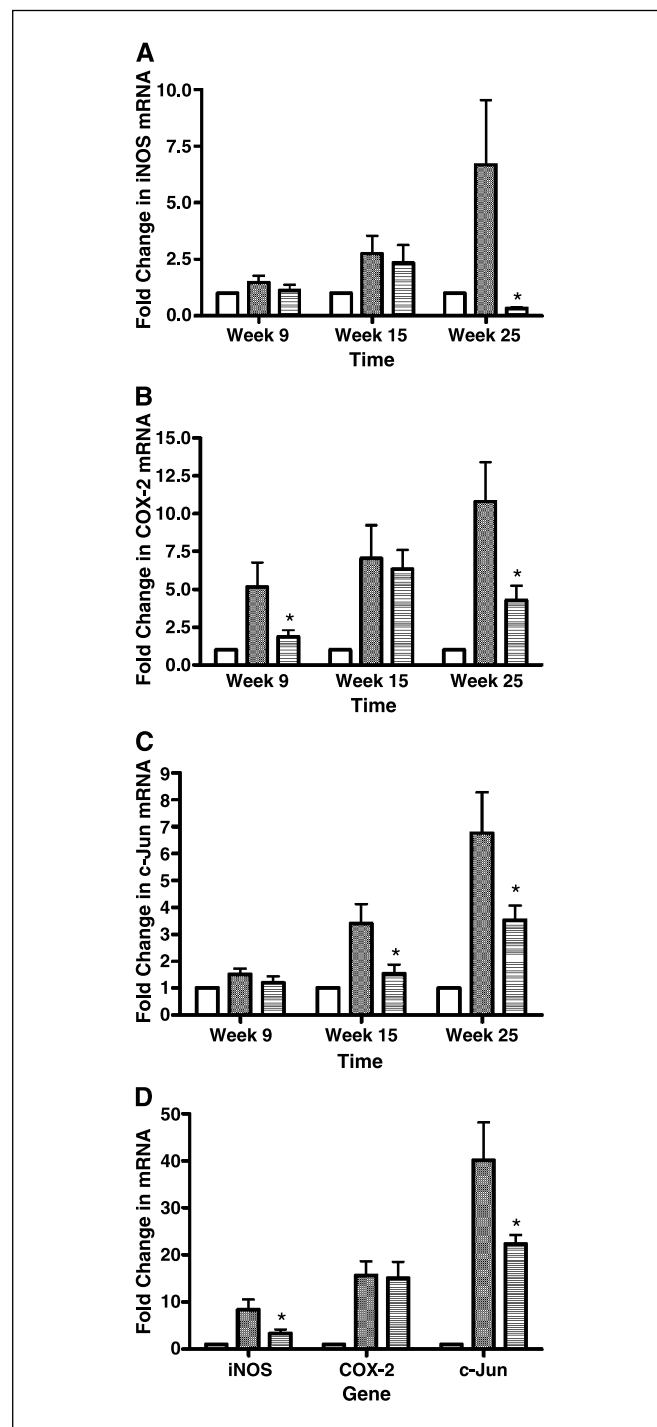


Figure 2. Fold changes for iNOS (A), COX-2 (B), and *c-Jun* (C) mRNA expression in rat esophageal preneoplastic lesions at weeks 9, 15, and 25; and in papillomas at week 25 (D). Columns, means; bars, \pm SE; *, $P < 0.05$ as determined by ANOVA when compared with the control diet group. □, Normal control; ▨, NMBA control; ▩, NMBA+BRB.

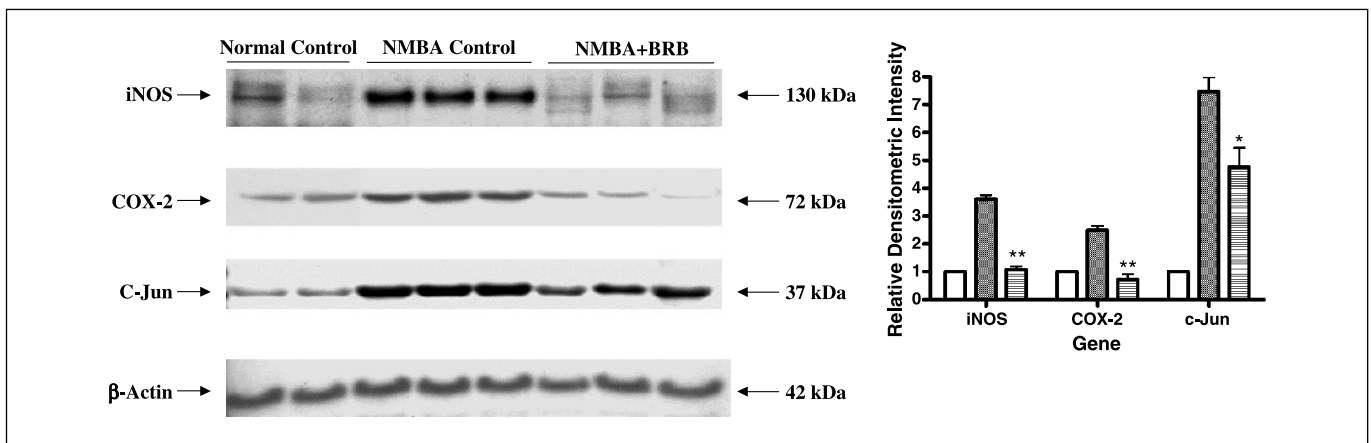


Figure 3. Effect of BRB on the protein expression of iNOS, COX-2, and c-Jun in preneoplastic lesions at week 25. The indicated proteins were detected by Western blot analyses. Representative blots are shown, similar results were obtained from triplicate experiments. Columns, mean relative densitometric intensities; bars, \pm SE; *, $P < 0.05$; **, $P < 0.005$ as determined by ANOVA when compared with the control diet group. □, Normal control; ■, NMBA control; ▨, NMBA+BRB.

treated with NMBA only to 1.22 ± 0.13 $\mu\text{g}/\text{mg}$ protein in rats treated with NMBA + BRB (60% reduction; $P < 0.05$). In addition, BRB treatment suppressed PGE₂ production in papillomas from 18.10 ± 4.40 $\mu\text{g}/\text{mg}$ esophageal protein in rats treated with NMBA only to 6.98 ± 1.68 $\mu\text{g}/\text{mg}$ esophageal protein in rats treated with NMBA + BRB (61% reduction; $P < 0.05$).

Discussion

Epidemiologic studies have revealed the protective effects of raw fruit and vegetable consumption on the development of several types of cancer in humans. However, the mechanisms of this inhibition by food components are not fully understood. The present study is part of a large-scale investigation of the chemopreventive effects of black raspberries on gastrointestinal cancers in animals and in humans. Our data suggest that black raspberries inhibit events associated with tumor progression in rats pretreated with NMBA, at least in part by reducing the expression and activities of iNOS and COX-2. This reduction is associated with an inhibitory effect of BRB on the transcription factor, c-Jun. These results may be relevant for human esophageal SCC because these genes are frequently overexpressed in this disease (15, 27).

In the NMBA model of rat esophageal tumorigenesis, the principal end point for assessing the inhibitory effects of chemopreventive agents is tumor multiplicity. Reductions in tumor incidence occur only with very potent chemopreventive agents

because virtually all NMBA-treated rats develop multiple tumors at 25 weeks. With less active chemopreventive agents, large numbers of animals per group (60-100) are required to show an inhibitory effect on tumor incidence, which makes routine studies cost prohibitive. Similarly, tumor volume data are of limited use in chemoprevention studies because the variability in esophageal tumor volume among individual animals is significant. Thus, as for tumor incidence data, a large number of animals per group (60-100) is required to show the significant inhibitory effect of chemopreventive agents on tumor volume.

Black raspberries, a small black berry native to North America, are an abundant source of flavonoid compounds (e.g., ellagic acid, ferulic acid, coumaric acid, quercetin, and the anthocyanins), vitamins (e.g., vitamins A, C, and E and folic acid), minerals (e.g., calcium, potassium, selenium, and zinc), and phytosterols (e.g., β -sitosterol, campesterol, and stigmasterol). The chemical composition of BRB has not been fully determined. However, recent data suggest that the anthocyanins are most abundant compounds in BRB representing $\sim 5\%$ to 6% of their dry weight. Many of the known compounds have antioxidant and anti-inflammatory activities and protect against cancer in animal models. For example, ellagic acid protects against chemically induced cancer in multiple organ sites including the rat esophagus (42). It reduces the metabolic activation of procarcinogens by inhibition of cytochrome P450 enzymes, and it enhances phase II enzyme activities resulting in more efficient detoxification of carcinogens.

Table 3. Modulation of iNOS and COX-2 activities in the esophagus of NMBA-treated rats by BRB at 25 weeks

Diet	Preneoplasia		Papilloma	
	iNOS (mean \pm SE)*	COX-2 (mean \pm SE) [†]	iNOS (mean \pm SE)	COX-2 (mean \pm SE)
Control	4.40 \pm 0.52	3.05 \pm 0.59	7.66 \pm 1.65	18.10 \pm 4.40
5% BRB	4.17 \pm 0.83	1.22 \pm 0.13 [‡]	4.04 \pm 1.24 [‡]	6.98 \pm 1.68 [‡]

*iNOS activity is expressed as $\mu\text{mol}/\text{L}$ nitrite.
[†]COX-2 activity is expressed as $\mu\text{g}/\text{mg}$ protein.
[‡]Significantly lower than rats fed control diets ($P < 0.05$).

Cytochrome P450s, 2E1 and 1A1, for example, are major enzymes involved in the bioactivation of procarcinogens such as NMBA and benzo(a)pyrene (43, 44). Ellagic acid decreased the activation of these two enzymes and inhibited carcinogenesis in the rat esophagus and mouse skin (45). Ascorbic acid is another chemopreventive agent in black raspberries. It suppressed the *in vivo* nitrosation of primary and secondary amines in the stomach from nitrite, thus, inhibiting the formation of nitrosamine carcinogens including NMBA (46). Calcium protects against the development of colon cancer in animals (47), and β -sitosterol has chemopreventive effects against carcinogen-induced mammary cancer in rodents (48). These are only a few examples of the multiple known chemopreventive agents in black raspberries. By freeze-drying the berries, these components are concentrated ~10-fold because black raspberries are ~90% water by weight. Ascorbic acid is the only component known to degrade substantially during storage and before freeze-drying the berries. The other components seem to be well preserved even when BRB are stored at 4°C for several months. Biodirected fractionation studies are under way to identify the most active inhibitory components in BRB against NMBA-induced rat esophageal tumorigenesis.

The precise mechanism by which black raspberries inhibit tumor development in the esophagus of rats that have been treated with NMBA is not fully understood. However, in the present study, black raspberry powder was found to inhibit both mRNA expression levels and activities of iNOS and COX-2, two enzymes previously shown in our laboratory to be up-regulated in rat esophageal tumorigenesis (16, 40). Moreover, BRB were found to down-regulate the expression of *c-Jun*, a component of the transcription factor, AP-1, which controls the expression of multiple genes. Thus, we depict the possible mechanisms for the prevention of tumor development by BRB in Fig. 4.

The data presented in Fig. 2A-C indicate that the expression levels of COX-2, iNOS, and *c-Jun* were modulated significantly by berries only when they exceeded the levels in normal tissue by at least a factor of 4. Thus, COX-2 expression was down-regulated as early as week 9, *c-Jun* at week 15, and iNOS only at week 25.

The COX-2 results are not surprising in that we have reported that COX-2 overexpression is an early event in rat esophageal carcinogenesis (40). The lack of an inhibitory effect on COX-2 expression at week 15 is surprising and this result is under further investigation. The significant down-regulation of *c-Jun* at week 15 is probably related to its higher expression level at this time point than at 9 weeks. In this regard, we have reported that essentially all NMBA-induced papillomas in the rat esophagus exhibit a G → A transition mutation in the *H-ras* gene, and that the percentage of premalignant dysplastic foci in the esophagus that exhibit mutant *ras* increases with time after NMBA treatment (41, 49). Because *c-Jun* is downstream of *ras*, its expression levels might be related to the percentage of esophagus cells that exhibit mutant *ras*. Thus, the berries may have been effective at down-regulating *c-Jun* only in tissues that had a sufficient number of *ras*-activated cells. Inhibition of the expression of iNOS was observed in the esophagus only at 25 weeks. Again, this was probably related to the higher expression levels of this gene at this time point, which is in agreement with our immunohistochemical studies showing higher levels of iNOS protein in more advanced lesions (16).

The present study is of potential importance to humans because both iNOS and COX-2 are overexpressed in dysplastic lesions of human esophagus and esophageal SCC. In endoscopic surveys of high-risk populations in China, dysplastic lesions exhibited overexpression of iNOS and COX-2 and ~70% of patients with esophageal dysplasia are later diagnosed with esophageal SCC (50, 51). Because our results showed that black raspberry powder inhibits iNOS and COX-2 during the progression stage of esophageal carcinogenesis, using black raspberries for chemoprevention of this disease could be an effective strategy for its prevention in high-risk populations.

Interestingly, in the current investigation, we found that BRB significantly inhibit both COX-2 expression and COX-2-derived PGE₂ levels in precancerous tissues, but only PGE₂ and not COX-2 levels in papillomas. Although the reason(s) for this are unknown, recent studies indicate that an enzyme, 15-hydroxyprostaglandin dehydrogenase (15-PGDH), is a prostaglandin-degrading enzyme

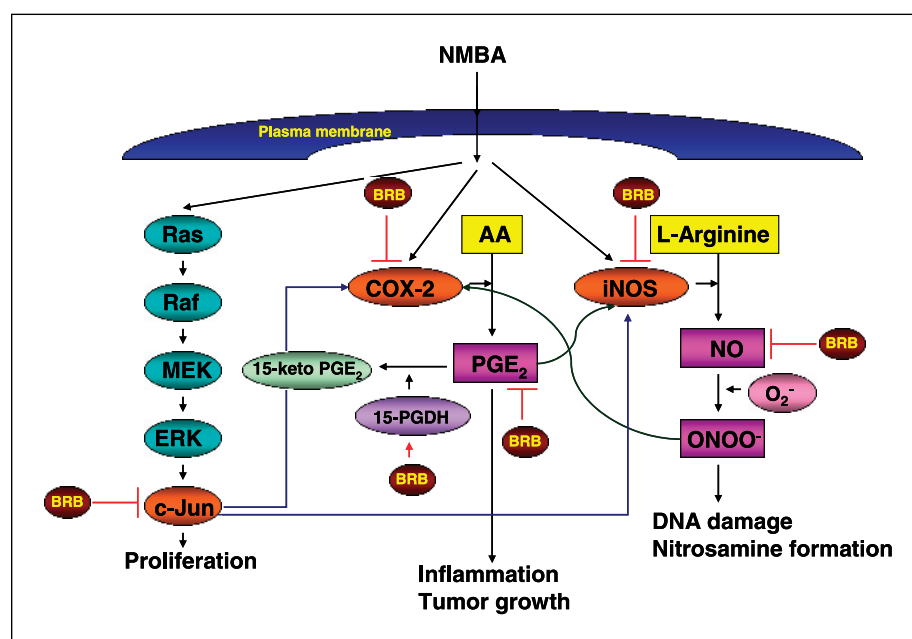


Figure 4. Possible mechanisms for the prevention of tumor development in rat esophagus by BRB.

that catalyzes the oxidization of the 15(*S*)-hydroxyl group of PGE₂ to produce inactive 15-keto PGE₂ (52). The level of PGE₂ depends on the rates of COX-2-dependent biosynthesis and 15-PGDH-dependent degradation. In NMBA-induced papillomas, BRB did not inhibit COX-2 expression, but they did reduce PGE₂ levels. This could be due to an induction of 15-PGDH by BRB.

In conclusion, the present study suggests mechanisms for the chemopreventive action of black raspberries. The outcome of this study is of great interest and has implications for the prevention of human esophageal cancer. Natural food products such as BRB may offer a relatively nontoxic alternative to the prevention of esophageal cancer in humans. In this regard, a phase I clinical trial of freeze-dried BRB recently conducted in our laboratory indicated that black

raspberries were well tolerated by humans when administered p.o. at 45 g of powder per day for 7 days (53). In addition, in a trial involving subjects with Barrett's esophagus, black raspberry powder was well tolerated when administered at 32 and 45 g/d for 6 months (54). Thus, black raspberries may be a useful alternative to chemopreventive drugs for the prevention of human esophageal cancer.

Acknowledgments

Received 9/12/2005; revised 12/28/2005; accepted 1/4/2006.

Grant support: National Cancer Institute grants R01 CA96130 and CA103180.

The costs of publication of this article were defrayed in part by the payment of page charges. This article must therefore be hereby marked *advertisement* in accordance with 18 U.S.C. Section 1734 solely to indicate this fact.

References

- American Cancer Society. Cancer facts and figures, 2005. Atlanta: American Cancer Society; 2005. p. 1.
- Muñoz N. Epidemiological aspects of esophageal cancer. *Endoscopy* 1993;23:609-12.
- Neurath GB, Dunger M, Pein FG, Ambrosius D, Schreiber O. Primary and secondary amines in the human environment. *Food Chem Toxicol* 1977;15:275-82.
- Peto R, Gray R, Brantom P, Grasso P. Effects on 4080 rats of chronic administration of *N*-nitrosodiethylamine or *N*-nitrosodimethylamine: a detailed dose-response study. *Cancer Res* 1991;51:6415-51.
- Hodgson RM, Wiessler M, Kleihues P. Preferential methylation of target organ DNA by the oesophageal carcinogen *N*-nitrosomethylbenzylamine. *Carcinogenesis* 1980;1:861-6.
- Liu J, Li M. Roussin red methylester, a tumor promoter isolated from pickled vegetables. *Carcinogenesis* 1989; 10:617-20.
- Labuc GE, Archer MC. Esophageal and hepatic microsomal metabolism of *N*-nitroso-*N*-methylbenzylamine and dimethylnitrosamine in the rat. *Cancer Res* 1982;42:3181-6.
- Nathan C, Xie QW. Regulation of biosynthesis of nitric oxide. *J Biol Chem* 1994;269:13725-8.
- Tschugguel W, Schneeberger C, Unfried G, et al. Expression of inducible nitric oxide synthase in human breast cancer depends on tumor grade. *Breast Cancer Res Treat* 1999;56:145-51.
- Gallo O, Masini E, Morbidelli L, et al. Role of nitric oxide in angiogenesis and tumor progression in head and neck cancer. *J Natl Cancer Inst* 1998;90:587-96.
- Liu C, Wang C, Chen T, Lin H, Yu C, Kuo H. Increased level of exhaled nitric oxide and up-regulation of nitric oxide synthase in patients with primary lung cancer. *Br J Cancer* 1998;78:534-41.
- Amba S, Merriam WG, Bennett WP, et al. Frequent NOS-2 expression in human colon adenocarcinomas: implication for tumor angiogenesis and colon cancer progression. *Cancer Res* 1998;58:334-41.
- Andrew PJ, Harant H, Lindley IJ. Nitric oxide regulates IL-8 expression in melanoma cells at the transcriptional level. *Biochem Biophys Res Commun* 1995;214:949-56.
- Klotz T, Bloch W, Volberg C, Engelmann U, Addicks K. Selective expression of iNOS in human prostate carcinoma. *Cancer* 1998;82:1897-03.
- Tanaka H, Kijima H, Tokunaga T, et al. Frequent expression of inducible nitric oxide synthase in esophageal squamous cell carcinomas. *Int J Oncol* 1999;14:1069-73.
- Chen T, Stoner GD. Inducible nitric oxide synthase expression in *N*-nitrosomethylbenzylamine (NMBA)-induced rat esophageal tumorigenesis. *Mol Carcinog* 2004;40:232-40.
- Taketo MM. Cyclooxygenase-2 inhibitors in tumorigenesis (part I). *J Natl Cancer Inst* 1998;90:1529-36.
- Dubois RN, Abramson SB, Crofford L, et al. Cyclooxygenase in biology and disease. *FASEB J* 1998;12:1063-73.
- Sinicrope FA, Gill S. Role of COX-2 in colorectal carcinogenesis. *Cancer Metastasis Rev* 2004;23:63-72.
- Restiäki A, Honkanen N, Jänkälä H, Sipponen P, Härkönen M. Expression of cyclooxygenase-2 in human gastric carcinoma. *Cancer Res* 1997;57:1276-80.
- Parrett ML, Harris RE, Joarder FS, Ross MS, Clausen KP, Robertson FM. Cyclooxygenase gene expression in human breast cancer. *Int J Oncol* 1997;10:503-7.
- Müller-Decker K, Kopp-Schneider A, Marks F, Seibert K, Fürstenberger G. Localization of prostaglandin H synthase isozymes in murine epidermal tumors: suppression of skin tumor promotion by inhibition of prostaglandin H synthase-2. *Mol Carcinog* 1998;23: 36-44.
- Tucker ON, Dannenberg AJ, Yang EK, et al. Cyclooxygenase-2 expression is up-regulated in human pancreatic cancer. *Cancer Res* 1999;59:987-90.
- Hida T, Yatabe Y, Achiwa H, et al. Increased expression of cyclooxygenase-2 occurs frequently in human lung cancers, specifically in adenocarcinomas. *Cancer Res* 1998;58:3761-4.
- Chan G, Boyle JO, Yang EK, et al. Cyclooxygenase-2 expression is up-regulated in squamous cell carcinoma of the head and neck. *Cancer Res* 1999;59:991-4.
- Mohammed SI, Knapp DW, Bostwick DG, et al. Expression of cyclooxygenase-2 (COX-2) in human invasive transitional cell carcinoma (TCC) of the urinary bladder. *Cancer Res* 1999;59:5647-50.
- Ratnasinghe D, Tangrea J, Roth MJ, et al. Expression of cyclooxygenase-2 in human squamous cell carcinoma of the esophagus; an immunohistochemical survey. *Anticancer Res* 1999;19:171-4.
- Steinbach G, Lynch PM, Phillips RK, et al. The effect of celecoxib, a cyclooxygenase-2 inhibitor, in familial adenomatous polyposis. *N Engl J Med* 2000;342:1946-52.
- Baron JA, Cole BF, Sandler RS, et al. A randomized trial of aspirin to prevent colorectal adenomas. *N Engl J Med* 2003;348:891-9.
- Jacoby RF, Cole CE, Tutsch K, et al. Chemopreventive efficacy of combined piroxicam and difluoromethylornithine treatment of Apc mutant Min mouse adenomas, and selective toxicity against Apc mutant embryos. *Cancer Res* 2000;60:1864-70.
- Giardiello FM, Yang VW, Hyland LM, et al. Primary chemoprevention of familial adenomatous polyposis with sulindac. *N Engl J Med* 2002;346:1054-9.
- Zhang H, Chen X, Teng X, Snead C, Catravas JD. Molecular cloning and analysis of the rat inducible nitric oxide synthase gene promoter in aortic smooth muscle cells. *Biochem Pharmacol* 1998;55:1873-80.
- Chen LC, Chen BK, Chang JM, Chang WC. Essential role of *c-jun* induction and coactivator p300 in epidermal growth factor-induced gene expression of cyclooxygenase-2 in human epidermoid carcinoma A431 cells. *Biochim Biophys Acta* 2004;1683:38-48.
- Shaulian E, Karin M. AP-1 in cell proliferation and survival. *Oncogene* 2001;20:2390-400.
- Bohmann D, Bos TJ, Admon A, Nishimura T, Vigt PK, Tjian R. Human proto-oncogene *c-jun* encodes a DNA binding protein with structural and functional properties of transcription factor AP-1. *Science* 1987;238:1386-92.
- Tessari G, Ferrara C, Poletti A, et al. The expression of proto-oncogene *c-jun* in human pancreatic cancer. *Anticancer Res* 1999;19:863-7.
- Westwick JK, Cox AD, Der CJ, et al. Oncogenic Ras activates *c-Jun* via a separate pathway from the activation of extracellular signal-regulated kinases. *Proc Natl Acad Sci U S A* 1994;91:6030-4.
- Tsao AS, Kim ES, Hong WK. Chemoprevention of cancer. *CA Cancer J Clin* 2004;54:150-80.
- Chen T, Nines RG, Peschke SM, Kresty LA, Stoner GD. Chemopreventive effects of a selective nitric oxide synthase inhibitor on carcinogen-induced rat esophageal tumorigenesis. *Cancer Res* 2004;64:3714-7.
- Carlton PS, Gopalakrishnan R, Gupta A, et al. Piroxicam is an ineffective inhibitor of *N*-nitrosomethylbenzylamine-induced tumorigenesis in the rat esophagus. *Cancer Res* 2002;62:4376-82.
- Liston BW, Gupta A, Nines R, et al. Incidence and effects of Ha-ras codon 12 G → A transition mutations in preneoplastic lesions induced by *N*-nitrosomethylbenzylamine in the rat esophagus. *Mol Carcinog* 2001;32:1-8.
- Mandal S, Stoner GD. Inhibition of *N*-nitrosomethylbenzylamine-induced esophageal tumorigenesis in rats by ellagic acid. *Carcinogenesis* 1990;11:55-61.
- Guengerich FP, Shimada T. Oxidation of toxic and carcinogenic chemicals by human cytochrome P450 enzymes. *Chem Res Toxicol* 1991;4:391-07.
- Xue H, Aziz RM, Sun N, et al. Inhibition of cellular transformation by berry extracts. *Carcinogenesis* 2001; 22:351-6.
- Stoner GD, Mukhtar H. Polyphenols as cancer chemopreventive agents. *J Cell Biochem Suppl* 1995;22:169-80.
- Bosetti C, La Vecchia C, Talamini R, et al. Food groups and risk of squamous cell esophageal cancer in northern Italy. *Int J Cancer* 2000;87:289-94.
- Slattery ML, Neuhausen SL, Hoffman M, et al. Dietary calcium, vitamin D, VDR genotypes and colorectal cancer. *Int J Cancer* 2004;111:750-6.
- Awad AB, Chen YC, Fink CS, Hemmessey T. Beta-sitosterol inhibits HT-29 human colon cancer cell growth and alters membrane lipids. *Anticancer Res* 1996;16:2797-804.
- Wang Y, You M, Reynolds SH, Stoner GD, Anderson MW. Mutational activation of the cellular Harvey *ras* oncogene in rat esophageal papillomas induced by methylbenzylamine. *Cancer Res* 1990;50:1591-5.
- Jin Y, Zhang W, Liu B, Wang H, Han Z, Wang L. Expression of inducible nitric oxide synthase in human esophageal biopsies from carcinoma and precancerous lesions. *Zhongguo Yi Xue Ke Xue Yuan Xue Bao* 2000;22:570-2.
- Yu HP, Xu SQ, Liu L, et al. Cyclooxygenase-2 expression in squamous dysplasia and squamous cell carcinoma of the esophagus. *Cancer Lett* 2003;198:193-201.
- Tai HH, Ensor CM, Tong M, Zhou H, Yan F. Prostaglandin catabolizing enzymes. *Prostaglandins Other Lipid Mediat* 2002;68-69:483-93.
- Stoner GD, Sardo C, Apseloff G, et al. Pharmacokinetic study of anthocyanins and ellagic acid in healthy volunteers fed 45 g of freeze-dried black raspberries daily for 7 days. *J Clin Pharmacol* 2005;45:1153-64.
- Kresty LA, Frankel W, Hammond C, et al. Transitioning from preclinical to clinical chemopreventive assessments of lyophilized black raspberries: interim results show berries modulate markers of oxidative stress in Barrett's esophagus patients. *Nutr Cancer*. In press 2006.