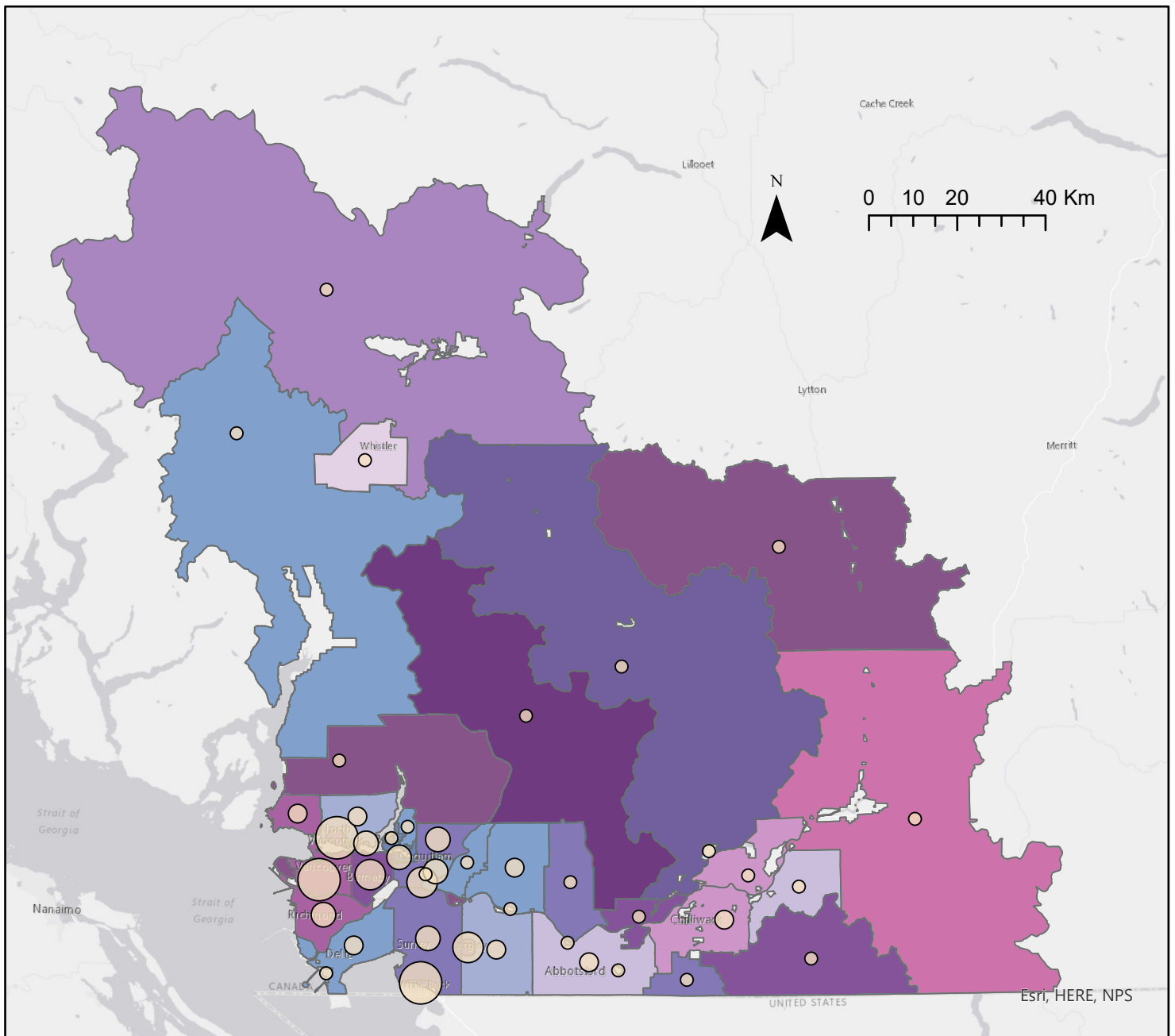
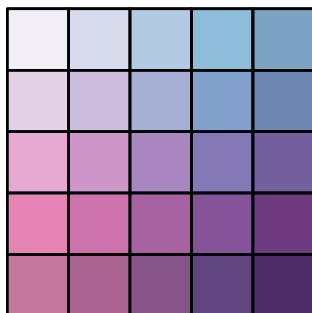


Summary Map of the Interaction of Social Considerations



Small % Long Commute High % Long Commute
 ⇐═══════════════════════>

Small Low Income Prevalence
 ⇐═══════════════════════>
 Larger Low Income Prevalence



Population Density

- ≤214.7
- ≤567.4
- ≤2009
- ≤2700
- ≤5493

This map helps to emphasize areas where the population has a larger percentage of people with low income prevalence and/or a long commute. These areas (darker purple) may act as a starting point when beginning the public consultation phase. However, by placing proportional population density symbols above, the reader also gets an idea of how people are spread out across this space.