



2006 Census Profile

CT 0069.00 in Vancouver, CMA

A Census Tract located in Vancouver, CMA

Geographic Classification
933006900

For a map, follow the link to Census tract reference maps at
<http://www12.statcan.ca/english/census06/geo/index.cfm>

Data Quality for the Profiled Area

Data quality flag for this area is 02020:

i **100% Data Quality Flag (100% sample)**
Data quality index showing, for the short census questionnaire (100% data), a global non-response rate higher than or equal to 10% but lower than 25%.
Does not apply to the population and dwelling counts.

i **20% Data Quality Flag (20% sample)**
Data quality index showing, for the long questionnaire (20% sample data), a global non-response rate higher than or equal to 10% but lower than 25%.
Does not apply to the population and dwelling counts.

More Information

Our own website contains sections devoted to census and regional statistics.

www.bcstats.gov.bc.ca/census.asp
www.bcstats.gov.bc.ca/regions.asp

Statistics Canada offers community profiles.
<http://www12.statcan.ca/english/census06/data/profiles/community/Index.cfm?Lang=E> [continued]

The British Columbia Ministry of Agriculture, Food and Fisheries offers extensive statistics, for example:
<http://www.agf.gov.bc.ca/stats/>

Indian and Northern Affairs Canada has a growing statistics site.

www.inac.gc.ca/pr/sts/index_e.html

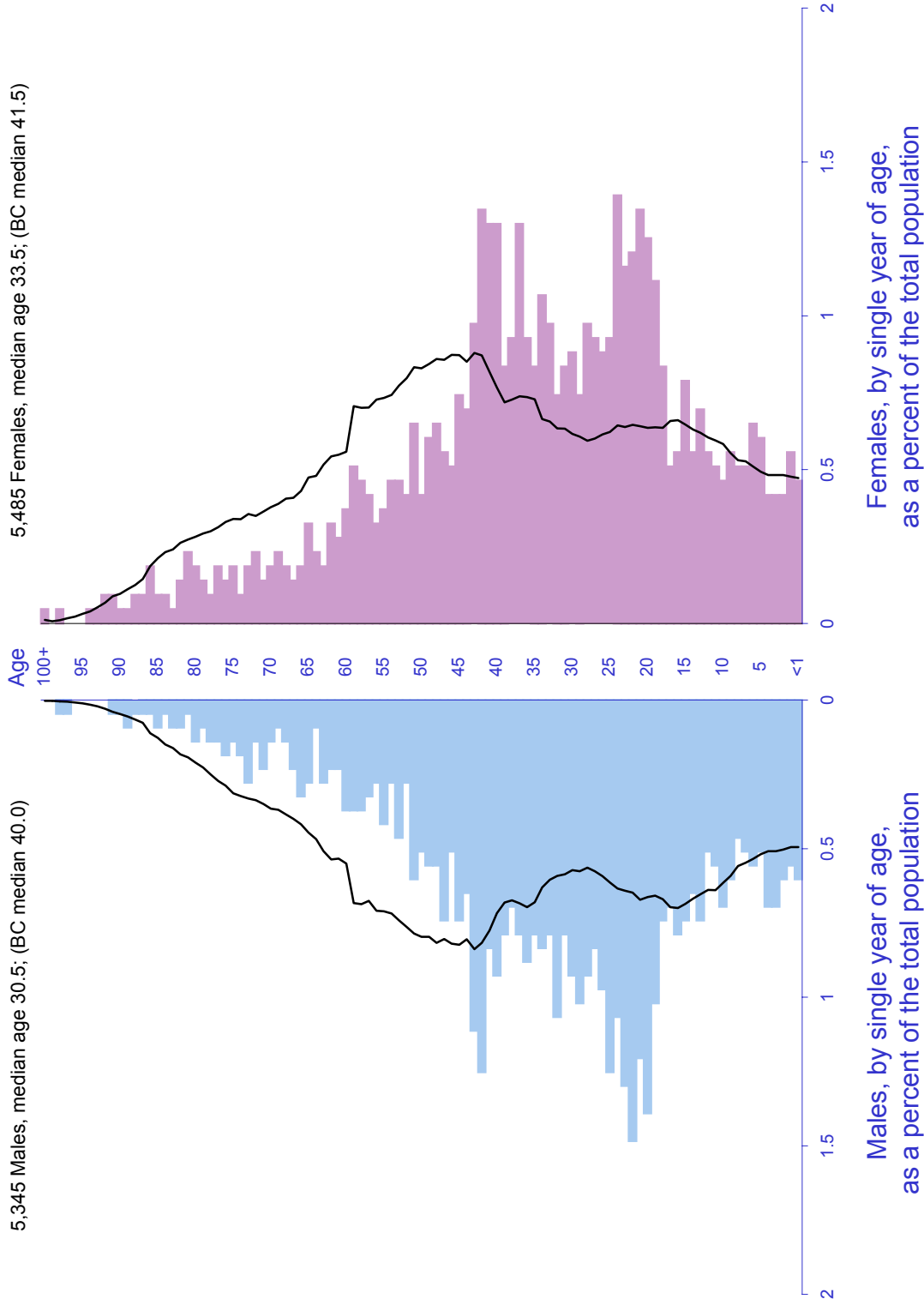
If you require further assistance please contact:

Data Services, BC Stats
Telephone (250) 387-0327

FAX (250) 387-0329
Email BC.Stats@gov.bc.ca
Location 1st Floor, 553 Superior Street, Victoria
Mail Box 9410, Stn Prov Govt, Victoria, BC V8W9V1

This document is one in a series of over 1,700 that cover a wide range geographic areas including Canada, the provinces and territories, Federal Electoral Districts, and the following in British Columbia: Census Sub-Divisions, Census Metropolitan Areas, Census Agglomerations, Census Tracts, and Designated Places.

Age pyramid of 0069.00, CT compared to British Columbia (line)



Subject Area	Compared to
CT 0069.00 in Vancouver, CMA	British Columbia
CT	BC
Geocode	
933006900	59
Population (unrounded data)	
10,831	4,113,487
Population (single year of age data)	
10,830	4,113,485
Median Age	
32.0	40.8
Age Cohorts % (5-year cohort data)	
0-19	24.4
20-29	22.1
30-44	28.1
45-64	17.2
65+	8.3
75+	4.2
	7.0

CT 0069.00 in Vancouver, CMA: A Census Tract in Vancouver, CMA

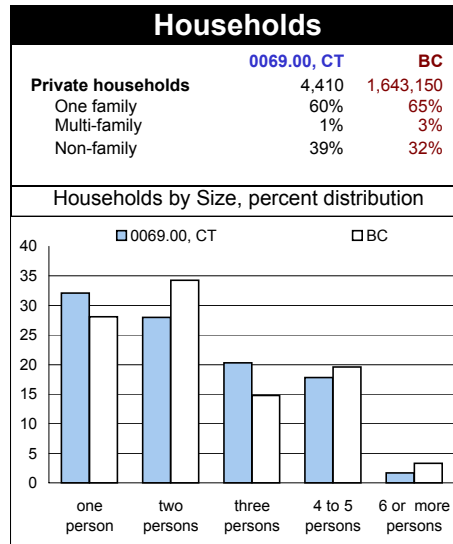
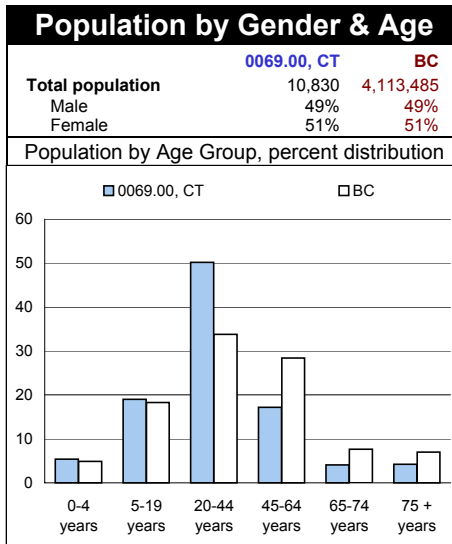
Geo Code

CT 0069.00 in Vancouver, CMA

All comparisons are to British Columbia (BC)

93306900

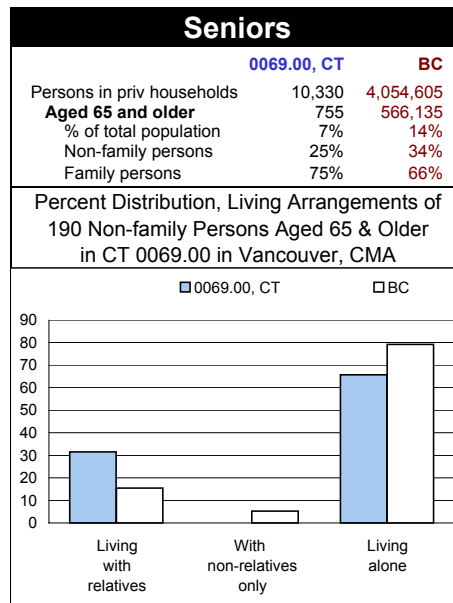
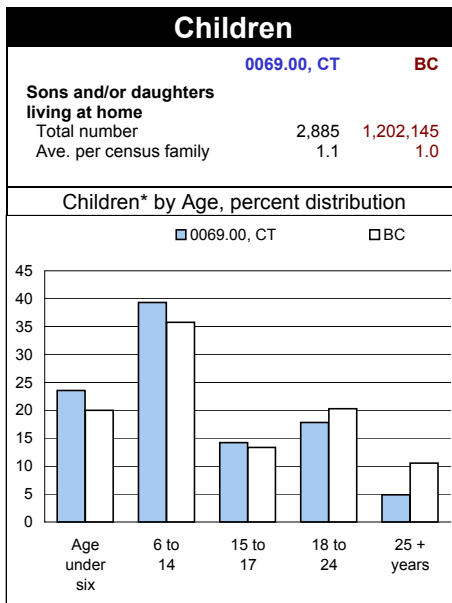
Summary			
	0069.00, CT	BC	
Total population (as of May 16, 2006)	10,831	4,113,487	
Share of CMA	0.5%	-	
2001 Census Population (as of May 15, 2001)	7,816	3,907,738	
Percent change '01-2006	38.6%	5.3%	
Land area 2006			
km ²	14.33		
km ²		924,815	
Occupied private dwellings (unrounded)	4,409	1,642,715	
Total dwellings (unrounded)	5,672	1,788,474	



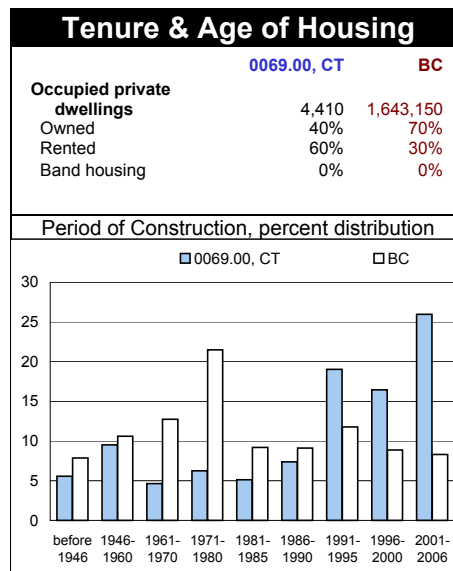
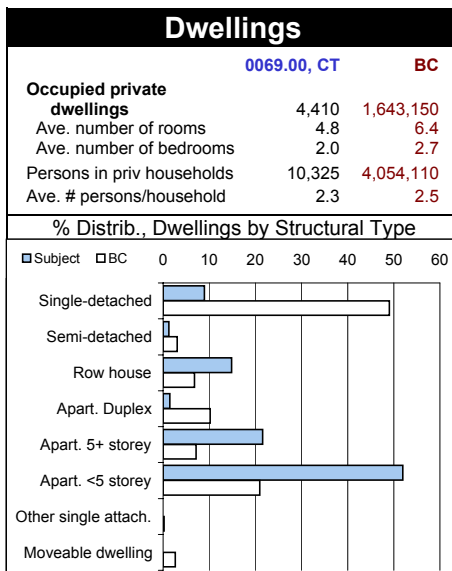
Marital Status & Families			
	0069.00, CT	BC	
Population 15+ years	9,025	3,433,880	
Single, never married	38%	32%	
Legally married	53%	50%	
Separated	2%	3%	
Divorced	4%	8%	
Widowed	3%	6%	

Census Families by Structure			
	0069.00, CT	BC	
Number, census families	2,735	1,161,420	
Husband-wife families	2,395	986,255	
Now-married couples	2,225	844,430	
Without child* at home	38%	46%	
With children* at home	62%	54%	
Common-law couples	170	141,825	
Without child* at home	85%	65%	
With children* at home	15%	35%	
Single-parent families	345	175,165	
Male parent	16%	20%	
Female parent	83%	80%	

child*/children* - defined as sons and/or daughters at home



Affordability (not available yet)			
	0069.00, CT	BC	
Average value of owner-occupied private dwellings			
Occupied dwellings			
Regular maintenance			
Require minor repairs			
Require major repairs			
Tenant households, non-farm, non-reserve, private dwellings			
Average gross rent			
Gross rent spending 30% or more of hh income on shelter			
Gross rent 30 to 99%			
Owner households, non-farm, non-reserve, private dwellings			
Average owner's major payments			
Owners major payments spending 30% or more of hh income on shelter			
Payments 30 to 99%			



Data presented in this report are subject to suppression and random rounding in order to preserve the confidentiality of respondents to the census. The effect is significant in areas with little population or where a particular category drew few responses.

The census is a rich source of demographic data for even small communities, at five year intervals. The information presented here is drawn from a large dataset. Other variables are available by request on a fee for service basis.

Population and dwellings

		BC			BC
Population, 2006 - unrounded data	10,831	4,113,487	Area, square kilometres	14,3316	924,815.4344
Population, 2001 - (2006 boundaries)	7,816	3,907,738	Population per sqare km.	755.7	4.4
Population percentage change, 2001-2006	38.6%	5.3%			
Occupied private dwellings (households)	4,409	1,642,715			
Total private dwellings (incl. seasonal, etc.)	5,672	1,788,474			

Age and sex

	Both Sexes			Male			Female		
			BC			BC			BC
Total - Age	10,830	100.0%	100.0%	5,345	100.0%	100.0%	5,485	100.0%	100.0%
0 to 4 years	580	5.4%	4.9%	335	6.3%	5.1%	245	4.5%	4.7%
5 to 9 years	585	5.4%	5.4%	285	5.3%	5.6%	295	5.4%	5.1%
10 to 14 years	640	5.9%	6.2%	340	6.4%	6.6%	305	5.6%	5.9%
15 to 19 years	835	7.7%	6.7%	435	8.1%	7.0%	405	7.4%	6.3%
20 to 24 years	1,385	12.8%	6.5%	695	13.0%	6.7%	685	12.5%	6.3%
25 to 29 years	1,010	9.3%	6.0%	535	10.0%	6.0%	480	8.8%	6.0%
30 to 34 years	965	8.9%	6.2%	475	8.9%	6.1%	485	8.8%	6.3%
35 to 39 years	950	8.8%	7.1%	430	8.0%	7.0%	520	9.5%	7.1%
40 to 44 years	1,125	10.4%	8.1%	520	9.7%	8.1%	605	11.0%	8.2%
45 to 49 years	660	6.1%	8.4%	330	6.2%	8.3%	330	6.0%	8.4%
50 to 54 years	495	4.6%	7.8%	230	4.3%	7.8%	260	4.7%	7.8%
55 to 59 years	415	3.8%	7.0%	190	3.6%	7.1%	225	4.1%	7.0%
60 to 64 years	295	2.7%	5.2%	135	2.5%	5.3%	160	2.9%	5.2%
65 to 69 years	245	2.3%	4.1%	120	2.2%	4.1%	120	2.2%	4.1%
70 to 74 years	195	1.8%	3.5%	100	1.9%	3.5%	90	1.6%	3.5%
75 to 79 years	165	1.5%	2.9%	80	1.5%	2.8%	85	1.5%	3.1%
80 to 84 years	135	1.2%	2.2%	50	0.9%	1.8%	80	1.5%	2.5%
85 to 89 years	90	0.8%	1.2%	40	0.7%	0.9%	55	1.0%	1.5%
90 to 94 years	50	0.5%	0.5%	15	0.3%	0.3%	40	0.7%	0.7%
95 to 99 years	15	0.1%	0.1%	5	0.1%	0.1%	5	0.1%	0.2%
100 years and over	-	0.0%	0.0%	-	0.0%	0.0%	5	0.1%	0.0%
Median age (half are younger; half older)	32.0		40.8	30.5		40.0	33.5		41.5

Marital status

			BC
(legal marital status)			
Total population 15 years and over	9,025	100.0%	100.0%
Never legally married (single)	3,450	38.2%	32.1%
Legally married (and not separated)	4,780	53.0%	50.4%
Separated, but still legally married	200	2.2%	3.2%
Divorced	350	3.9%	8.3%
Widowed	245	2.7%	6.0%

Common-law status

			BC
Total population 15 years and over	9,025	100.0%	100.0%
Not in a common-law relationship	8,640	95.7%	91.8%
In a common-law relationship	380	4.2%	8.2%

Families

			BC
Total Number of Census Families in private households	2,735		1,161,420

Children by age

			BC
Children at home in census families	2,885	100.0%	100.0%
Under 6 years of age	680	23.6%	20.0%
6-14 years	1,135	39.3%	35.8%
15-17 years	410	14.2%	13.3%
18-24 years	515	17.9%	20.3%
25 years and over	140	4.9%	10.5%
Average number of children at home	1.1		1.0

Families by size

				BC
Census families in private households				
Total number of census families	2,735	100.0%	100.0%	
2 person census families	1,170	42.8%	50.6%	
3 person census families	815	29.8%	21.1%	
4 person census families	580	21.2%	20.0%	
5 or more persons cen. families	165	6.0%	8.3%	

Families

by type and presence and number of children

(share down)

	Couple families			Married couples			Common-law couples		
			BC			BC			BC
Total	2,395	100.0%	100.0%	2,225	100.0%	100.0%	170	100.0%	100.0%
Without children at home	980	40.9%	48.6%	835	37.5%	45.9%	145	85.3%	64.6%
With children at home	1,415	59.1%	51.4%	1,390	62.5%	54.1%	25	14.7%	35.4%
1 child	685	28.6%	19.8%	665	29.9%	20.1%	20	11.8%	17.9%
2 children	575	24.0%	22.2%	565	25.4%	23.9%	10	5.9%	12.0%
3 or more children	165	6.9%	9.4%	165	7.4%	10.1%	-	0.0%	5.5%
Lone-parent families	All lone-parents			Male parent			Female parent		
			BC			BC			BC
Total	345	100.0%	100.0%	55	100.0%	100.0%	285	100.0%	100.0%
1 child	195	56.5%	61.9%	40	72.7%	66.9%	155	54.4%	60.7%
2 children	135	39.1%	28.7%	20	36.4%	25.3%	115	40.4%	29.6%
3 or more children	15	4.3%	9.3%	-	0.0%	7.8%	15	5.3%	9.7%

(share across)

	Couple families			Married couples			Common-law couples		
			BC			BC			BC
Total	2,395	100.0%	100.0%	2,225	92.9%	85.6%	170	7.1%	14.4%
Without children at home	980	100.0%	100.0%	835	85.2%	80.9%	145	14.8%	19.1%
With children at home	1,415	100.0%	100.0%	1,390	98.2%	90.1%	25	1.8%	9.9%
1 child	685	100.0%	100.0%	665	97.1%	87.0%	20	2.9%	13.0%
2 children	575	100.0%	100.0%	565	98.3%	92.2%	10	1.7%	7.8%
3 or more children	165	100.0%	100.0%	165	100.0%	91.6%	-	0.0%	8.4%
Lone-parent families	All lone-parents			Male parent			Female parent		
			BC			BC			BC
Total	345	100.0%	100.0%	55	15.9%	20.2%	285	82.6%	79.8%
1 child	195	100.0%	100.0%	40	20.5%	21.8%	155	79.5%	78.2%
2 children	135	100.0%	100.0%	20	14.8%	17.8%	115	85.2%	82.2%
3 or more children	15	100.0%	100.0%	-	0.0%	16.8%	15	100.0%	83.2%

Private households

by age and living arrangements

(share down)

	All persons			Under 65 years of age			Seniors (65 and older)		
			BC			BC			BC
Total persons in private households	10,330	100.0%	100.0%	9,575	100.0%	100.0%	755	100.0%	100.0%
Number of persons not in census families	2,315	22.4%	17.4%	2,125	22.2%	14.6%	190	25.2%	34.5%
Living with relatives	195	1.9%	2.2%	135	1.4%	1.7%	60	7.9%	5.3%
Living with non-relatives only	710	6.9%	3.8%	710	7.4%	4.1%	-	0.0%	1.8%
Living alone	1,405	13.6%	11.4%	1,280	13.4%	8.8%	125	16.6%	27.3%
Number of census family persons	8,015	77.6%	82.6%	7,450	77.8%	85.4%	565	74.8%	65.5%
Ave. number of persons per census family	2.9		2.9						

(share across)

	All persons			Under 65 years of age			Seniors (65 and older)		
			BC			BC			BC
Total persons in private households	10,330	100.0%	100.0%	9,575	92.7%	86.0%	755	7.3%	14.0%
Number of persons not in census families	2,315	100.0%	100.0%	2,125	91.8%	72.3%	190	8.2%	27.7%
Living with relatives	195	100.0%	100.0%	135	69.2%	66.6%	60	30.8%	33.4%
Living with non-relatives only	710	100.0%	100.0%	710	100.0%	93.3%	-	0.0%	6.7%
Living alone	1,405	100.0%	100.0%	1,280	91.1%	66.4%	125	8.9%	33.6%
Number of census family persons	8,015	100.0%	100.0%	7,450	93.0%	88.9%	565	7.0%	11.1%
Ave. number of persons per census family	2.9		2.9						

by size

			BC
Total number of private households	4,410	100.0%	100.0%
1 person	1,415	32.1%	28.1%
2 persons	1,235	28.0%	34.2%
3 persons	895	20.3%	14.8%
4 to 5 persons	785	17.8%	19.6%
6 or more persons	75	1.7%	3.3%

by average number of persons and by type

		BC
Persons in private households	10,325	4,054,110
Ave. # of persons in priv. h'holds	2.3	2.5
Total number of private households	4,410	100.0%
One-family households	2,650	65.4%
Multiple-family households	40	2.5%
Non-family households	1,720	32.1%

CT 0069.00 in Vancouver, CMA

All comparisons are to British Columbia (BC)

Dwellings

			BC				BC
Number of occupied private dwellings	4,410	100.0%	100.0%	Number of occupied private dwellings	4,410	100.0%	100.0%
Owned	1,760	39.9%	69.7%	Req'ng regular maintenance only	3,585	81.3%	67.7%
Rented	2,650	60.1%	30.1%	Requiring minor repairs	685	15.5%	24.9%
Band housing	-	0.0%	0.2%	Requiring major repairs	140	3.2%	7.4%
Single-detached house	395	9.0%	49.0%	Period of construction, before 1946	245	5.6%	7.9%
Semi-detached house	55	1.2%	3.1%	Period of construction, 1946 to 1960	420	9.5%	10.6%
Row house	655	14.9%	6.8%	Period of construction, 1961 to 1970	205	4.6%	12.8%
Apartment, duplex	65	1.5%	10.2%	Period of construction, 1971 to 1980	275	6.2%	21.5%
Apartment, building with 5 or more storeys	950	21.5%	7.2%	Period of construction, 1981 to 1985	225	5.1%	9.2%
Apartment, building with under 5 storeys	2,290	51.9%	20.9%	Period of construction, 1986 to 1990	325	7.4%	9.1%
Other single-attached house	-	0.0%	0.2%	Period of construction, 1991 to 1995	840	19.0%	11.8%
Movable dwelling	-	0.0%	2.6%	Period of construction, 1996 to 2000	725	16.4%	8.9%
Average number of rooms per dwelling	4.8		6.4	Period of construction, 2001 to 2006	1,145	26.0%	8.3%
Average number of bedrooms per dwelling	2.0		2.7				