

Takara Bond and
Xuyan Tang

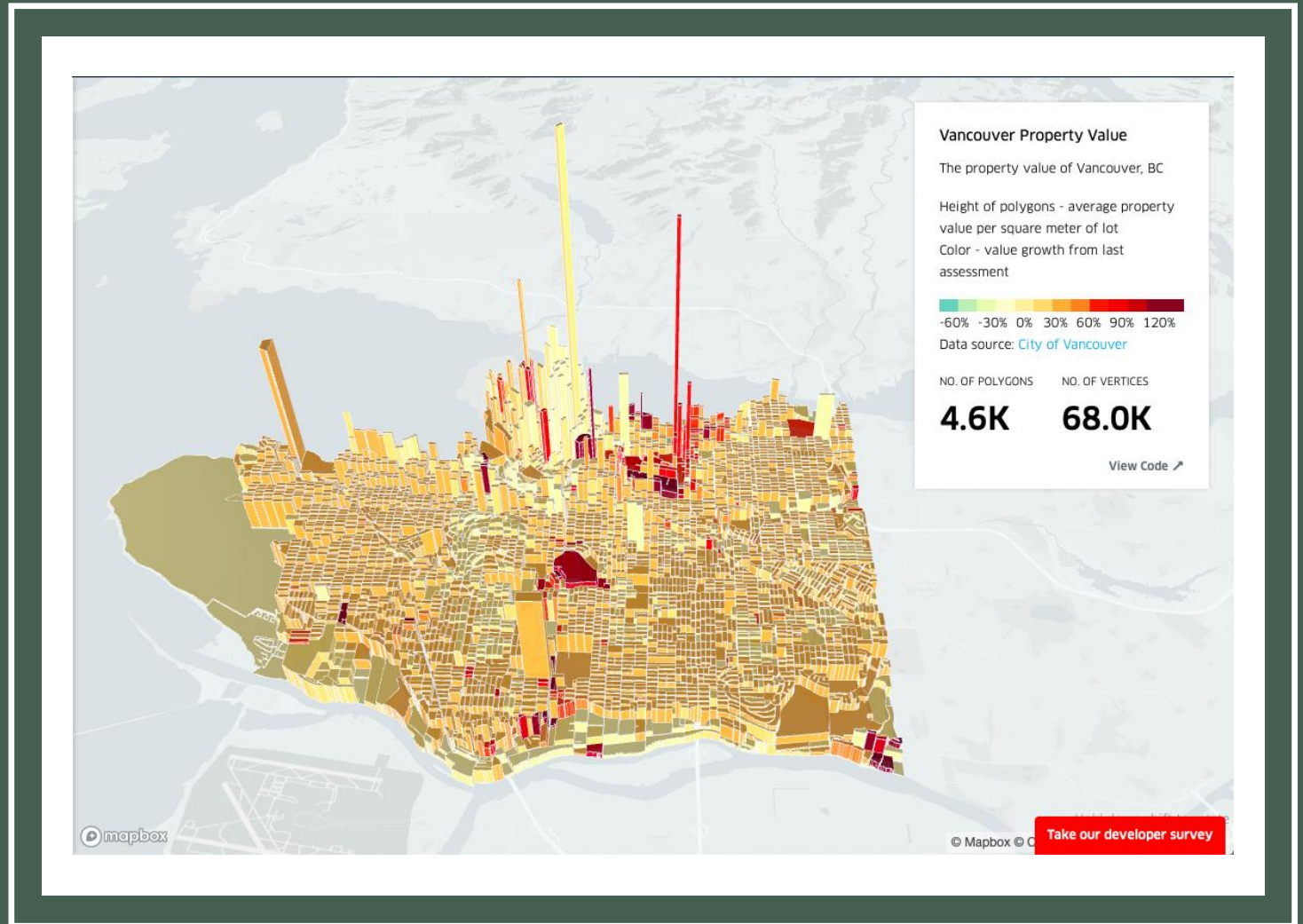
For EPSE 581: Data
Visualization

Prof: Dr. Yan Liu

PROJECT #1: GRAPHIC CRITIQUE

VANCOUVER PROPERTY VALUE

- Data taken from City of Vancouver Open Data Catalogue
- Created by a team of software engineers, information designers, and computer graphics specialists at Uber
- Made for an example of how to use their deck.gl software, which is for visualizing large data sets



<http://deck.gl/#/examples/core-layers/geojson-layer-polygons>

VANCOUVER PROPERTY VALUE

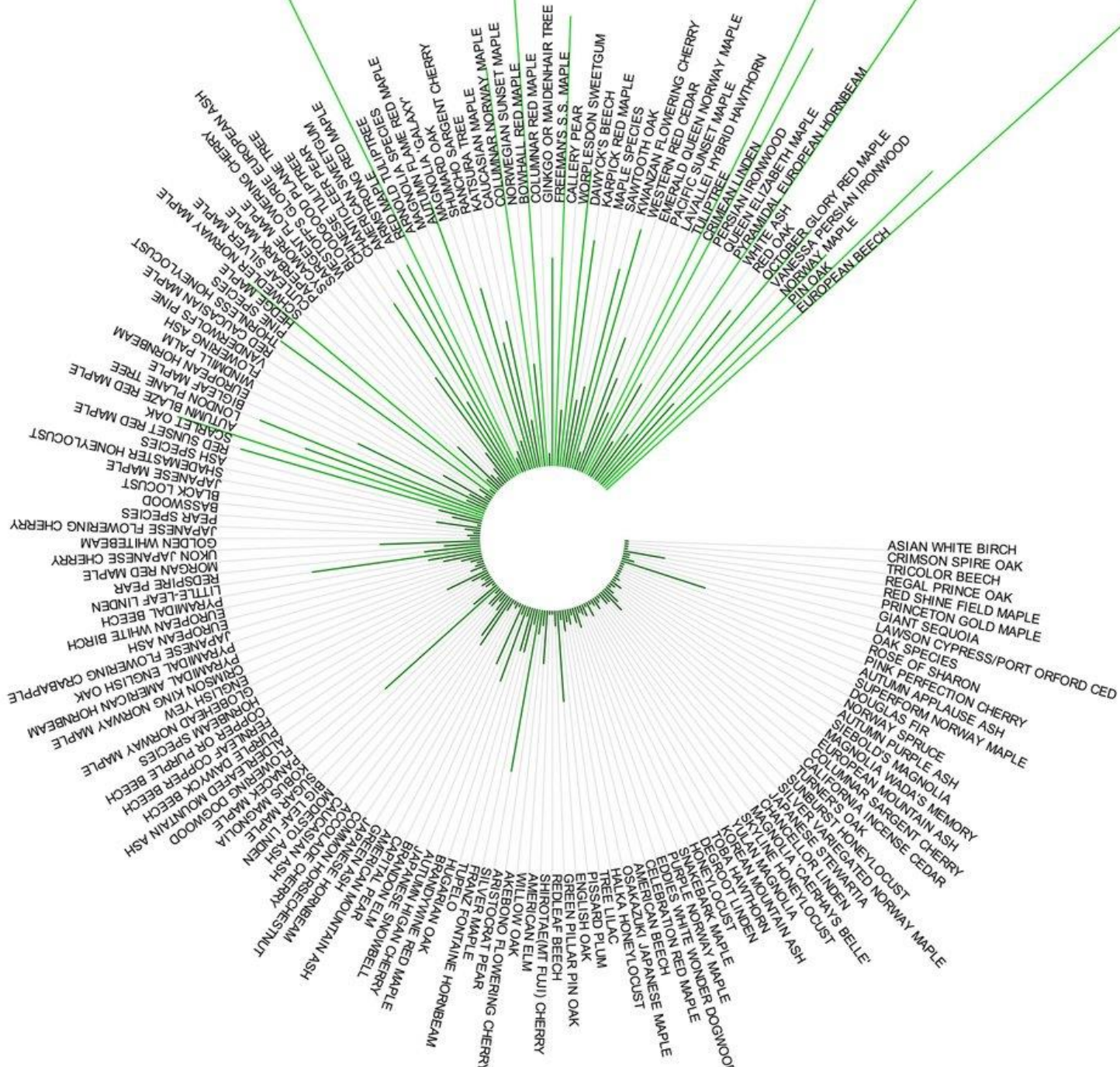
Pros

- Displays lots of data in an interactive format
- Clear captions and titles in this graph
 - We can understand what height and colour represent in this graph
- Hovering provides more details:
 - Average property value
 - Parcel
 - m²
 - Growth in value since last assessment
- Contrasting values of two properties is very visible

Cons

- LOTS of data points
 - But you can zoom in to see more details
 - Can't change the angle in which you view the map, some data is hidden this way
- Their colour gradient indicating change in property value goes from green to red – the green is not eye catching!
 - Starts at -60%, though the lowest I could find was -40%
 - Ends at 120%, though highest on graph is 1025%
 - Colour isn't very different between 120% and 1025%, though the increase is MASSIVE.
- Regional lines or major transport networks aren't on graph
 - Makes it difficult to recognize locations of buildings and explain dramatic property value growth

TREES OF DOWNTOWN VANCOUVER



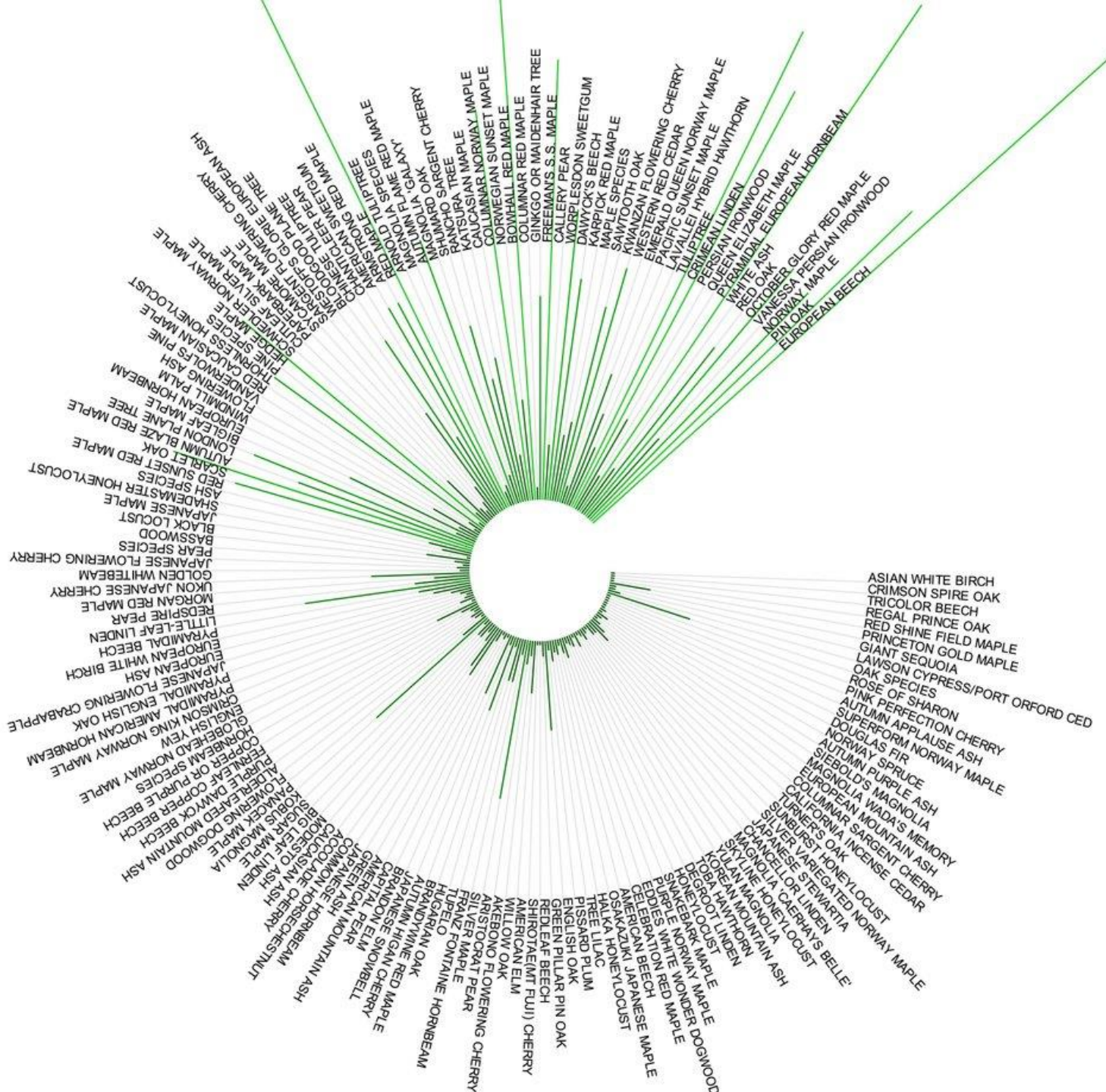
- Found at Reddit thread [r/datisbeautiful](https://www.reddit.com/r/datisbeautiful/comments/6bqbac/trees_of_downtown_vancouver_oc/) by user NestAndPond
- Made with Processing from City of Vancouver Open Data Catalogue
- Every tree in downtown Vancouver, with the line indicating the number of trees

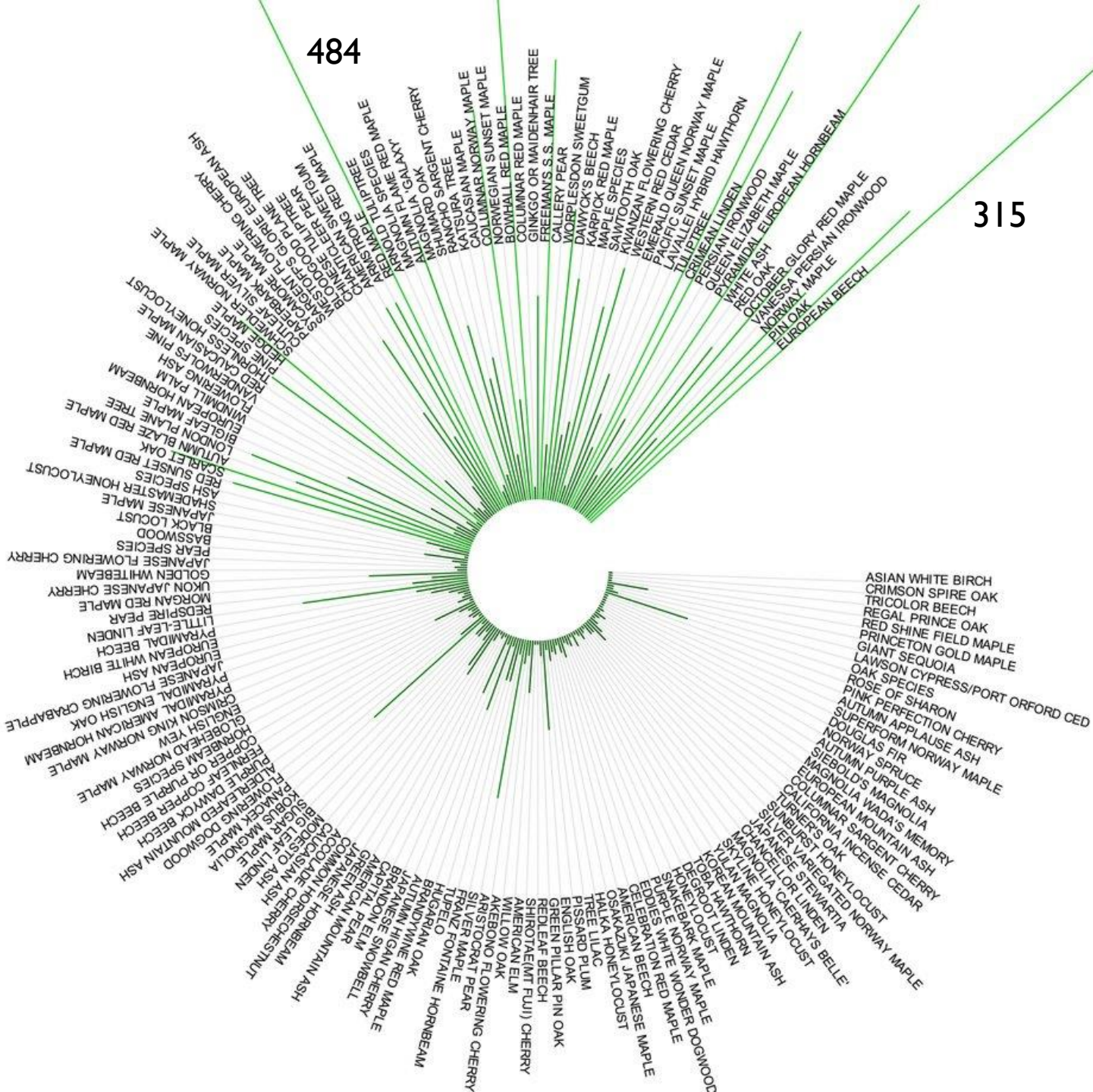
https://www.reddit.com/r/datisbeautiful/comments/6bqbac/trees_of_downtown_vancouver_oc/

TREES OF DOWNTOWN VANCOUVER

Pros

- It's pretty
- Provides 2 levels of data in a visually appealing way
 - Tree species
 - Number of trees for each type





TREES OF DOWNTOWN VANCOUVER

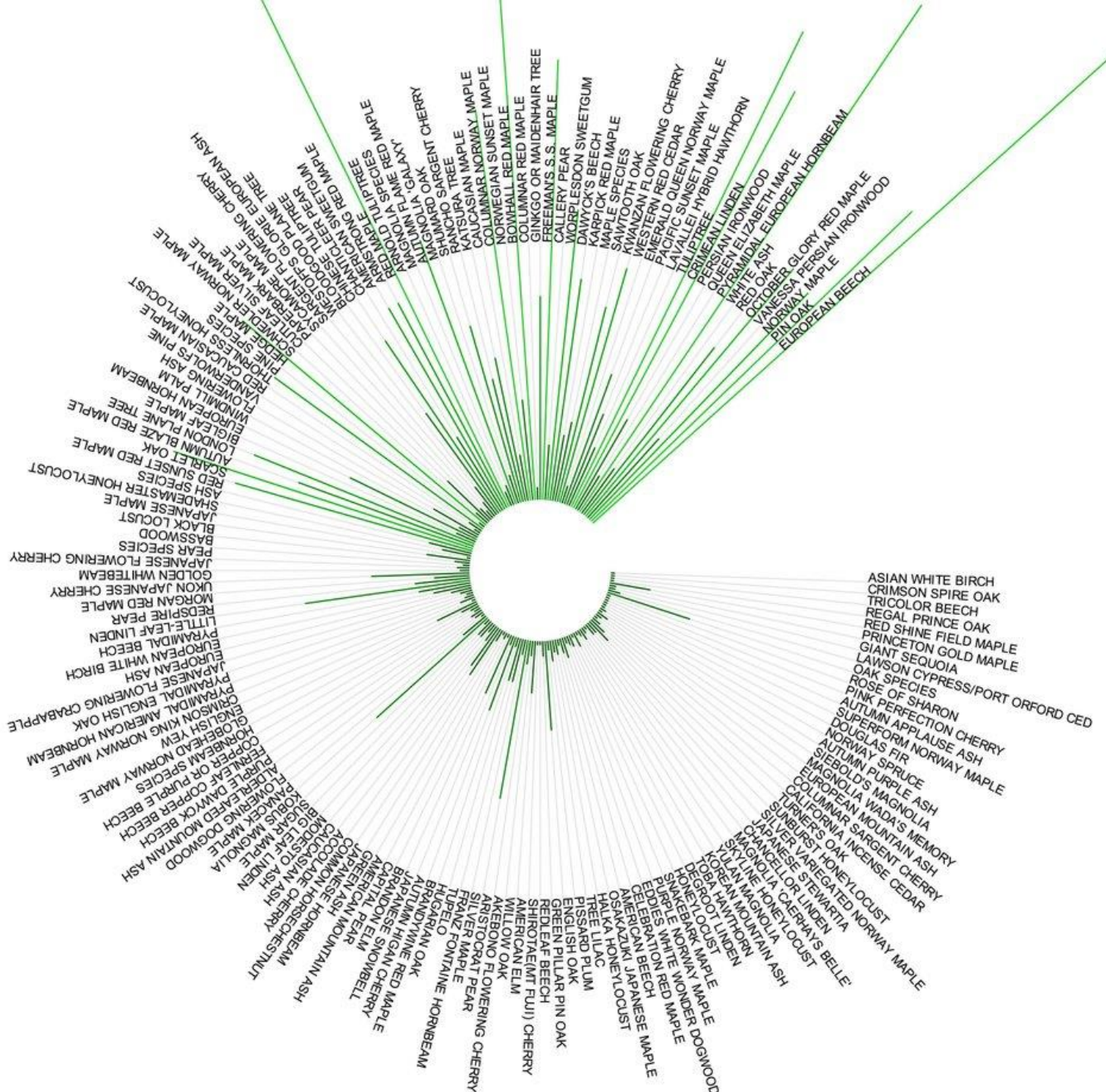
Cons

- Too many categories in one graph
- The actual values are really difficult to determine, especially since there is no scale
- Hard to read the tree names, as it goes in a circle with some labels upside down
- Some long lines go beyond the graph

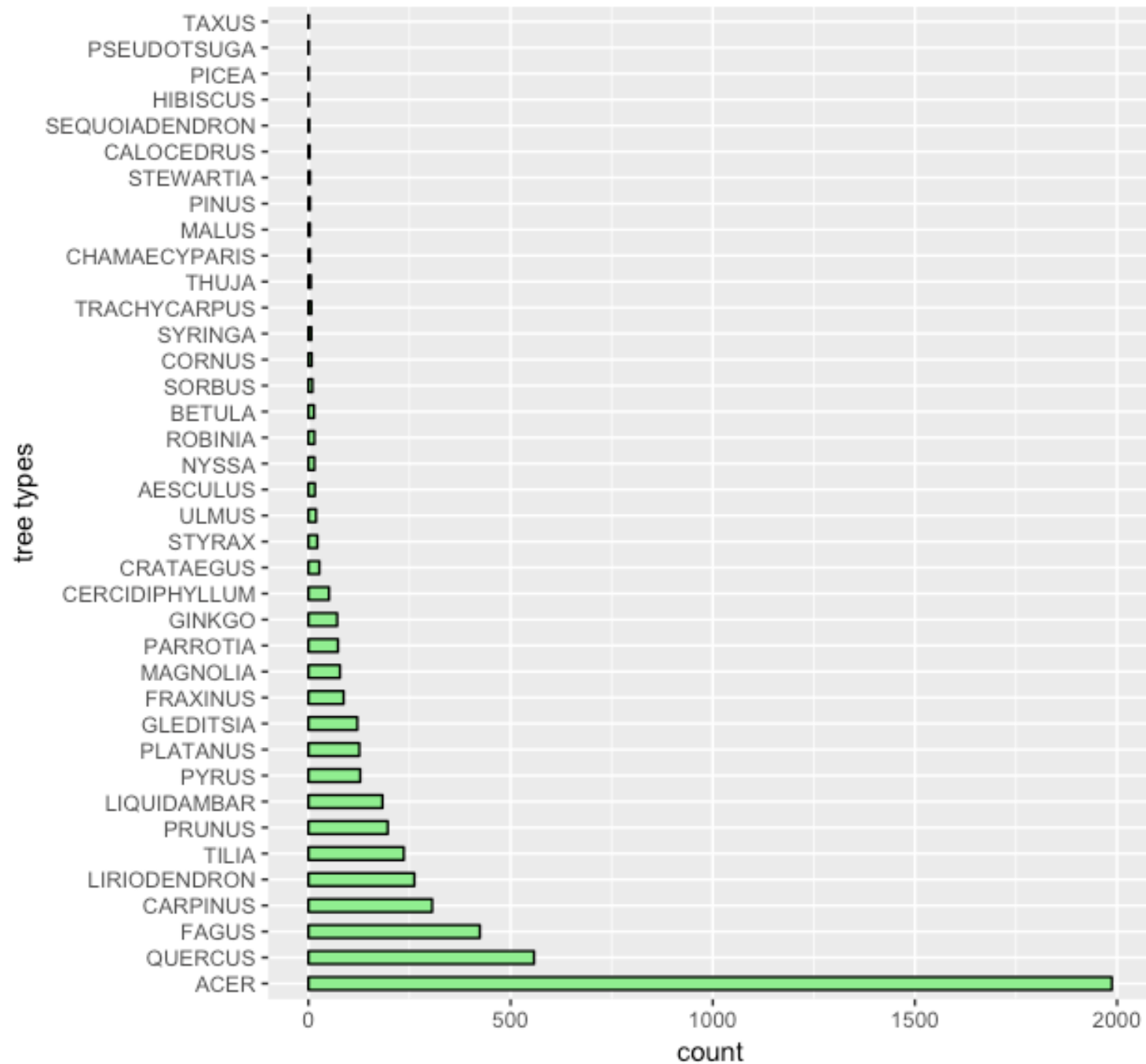
TREES OF DOWNTOWN VANCOUVER

Cons

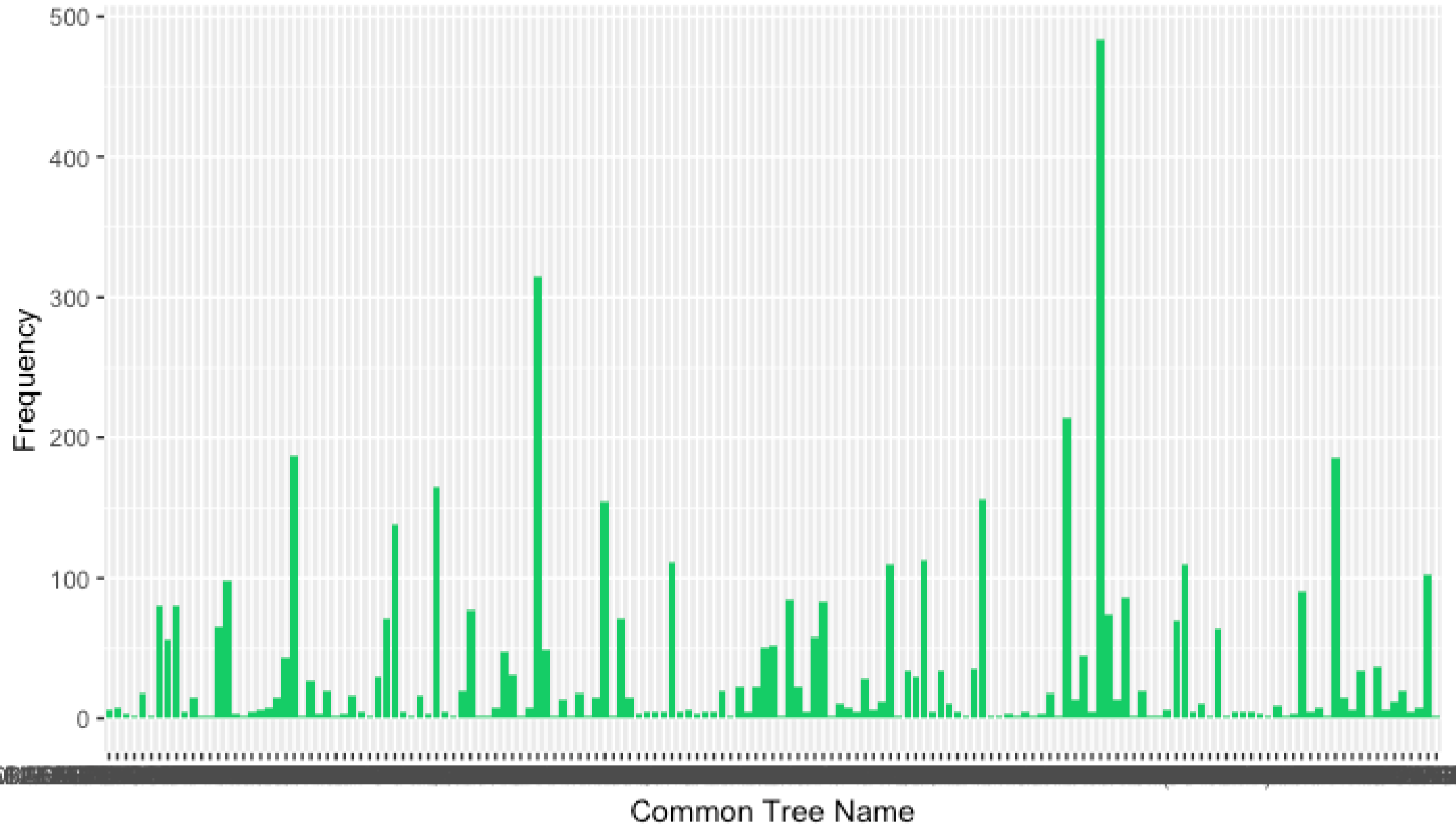
- Data isn't grouped in any logical way
 - Not alphabetical, not based on taxonomy
 - Sorting order is based on appearance in the data
- The colour, which we assume aligns with the number of trees, has such a small difference that it is a challenge to see
- No captions, no titles, no legend provided in this graph



Types and numbers of tree in Downtown Vancouver



Trees of Downtown Vancouver



TREES OF DOWNTOWN VANCOUVER

Pros

- It's pretty
- Provides 3 levels of data in a visually appealing way
 - Tree name
 - Tree genus (maybe)
 - Number of trees in downtown Vancouver

Cons

- Too many categories in one graph
- The actual values are really difficult to determine, especially since there is no y axis
- Hard to read the tree names, as it goes in a circle with some labels upside down
- Data isn't grouped in any logical way
 - Not alphabetical, not based on taxonomy
 - Sorting order is based on appearance in the data
- The colour, which we assume aligns with the tree genus, has such a small difference that it is a challenge to see
- No captions, not titles, no legend provided in this graph