



"The British Headquarters Map, circa 1782-83, once described as a "topographical and historical encyclopedia" of Manhattan before modern development, shows the original hills, streams, shoreline, and wetlands of the island."

URBAN REPRESENTATIONS: MAPPING_THE INVISIBLE

seminar

Mon Tues Wed Thurs Fri 1800 - 2100 15 May - 1 Jun Orchard Commons 3074

[office hours/contact info](#)

383 MCML. 2357 Main Mall. Mon 1330 - 1530. Appt's may also be arranged by email. mlewis@sala.ubc.ca

[course description](#)

An alternative contemporary visual survey of the histories, theories, and techniques deployed in the representation of the urban landscape.

history

Mappings have agency because of the double-sided characteristic of all maps. Firstly, their surfaces are directly analogous to actual ground conditions, as horizontal planes, they record the surface of the earth as direct impressions. As in the casting of shadows, walks and sightings across land may be literally projected onto paper through a geometrical graticule of points and lines drawn by ruler and pen. Conversely, one can put one's finger on a map and trace out a particular route or itinerary, the map projecting a mental image into the spatial imagination. Because of this directness, maps are taken to be 'true' and 'objective' measures of the world, and are accorded a kind of benign neutrality. By contrast, the other side of this analogous characteristic is the inevitable abstractness of maps, the result of selection, omission, isolation, distance and codification. Map devices, such as frame, scale, orientation, projection, indexing and naming, reveal artificial geographies that remain unavailable to human eyes.

James Corner, The Agency of Mapping

learning objectives

to explore and engage in a non-linear and adaptive learning process, and self-directed study

to identify opportunities to expand traditional representational boundaries of the design professions

to participate in multidisciplinary, student-initiated, case-study and project-based learning environments

to propose contemporary and future approaches to mapping and representation in light of new 21st c. technologies

to study and develop the analytical and critical skills appropriate for contemporary imaginations of natural and urban environments

outcomes

increased abilities to analyze/model/represent conventional/innovative natural/urban representations and their historical antecedents

increased collaboration across disciplines within the SALA research and design community

recalibration of the relationship of traditionally underrepresented constituencies (First Nations, natural ecologies, genders, cultural minorities etc.) in the description and representation of natural/urban space

Participation and attendance 10%. Case Study Research Project 20%. Personal Geography Mapping 30%. Innovative Mapping Proposal 40%.

Several scales of [maps, mapping, cartographic research and a final exhibition of seminar work.](#)

New York City, New York, USA / Vancouver, British Columbia, Canada / et al

[Planning, Architecture, Landscape Architecture, Urban Design, Environmental Design.](#)

Local, regional and international: determined by student survey.

Corner, James (2014). "The Agency of Mapping" in *The Landscape Imagination*. Princeton Architectural Press.
Desimini, Jil & Waldheim, Charles (2016). *Cartographic Grounds : projecting the landscape imaginary*. New York, Princeton Architectural Press.
Calvino, Italo (1974). *Invisible Cities*. University of Michigan Press.

The shifting nature of the geopolitical events of the last two decades has triggered a debate around the notions of territory and/or territoriality. An analysis of processes of territorialization and deterritorialization (inspired, initially at least, by practices identified by Gilles Deleuze and Félix Guattari in A Thousand Plateaus) has been followed by further investigations of the concepts of border and frontier.

In addition, over the same period, cartography—a primary tool of territorial representation and governance—has been radically altered by rapid advances in communication technologies, bringing new forms of data gathering and calculation as well as new platforms and interface systems, and constantly multiplying mobile devices for accessing and producing geographic information. A succinct inventory of these new territories could include satellite imagery, global positioning and geographical information systems, Google Maps (together with Street View), Google Earth, Twitter Map and Twitter Trendsmap, and the still-problematic 3-D map app for the iPhone, together with user-generated online maps and different forms of open-source cartographies. One salient character of these new applications and technologies is the almost total suppression of the materiality of the cartographic representation. Information is gathered and presented through screens and displays, while paper seems to subsist only as an occasional support. The near disappearance of material representations of geographical data, with their stable, time-freezing figuration of the world, runs parallel to the upsurge in interest in tracing a more flickering, fluctuating, mobile and event-related reality.

Allesandra Ponte
Mapping in the Age of Electronic Shadows

Maps can be thematic, that is, showing social, political, cultural, economic conditions that can be geographically based, or not. A map can be analytical, allowing individuals to help draw conclusions based on the map's representation. Sometimes, a "single map is not very effective at showing 'process.' A narrative can move a reader through time very quickly; a map tends to be static and to show a single place at a single moment. A map then, in distinction from written texts, can be understood as privileging place over process, contextuality over linearity." Perhaps animated maps can help solve this issue. A map in some sense is trying to convince the reader of some particular aspect the map is attempting to represent. In one sense, the mapmaker is making an argument about a particular aspect he or she is trying to represent. He or she may use a particular style or graphic device to communicate these aspects.

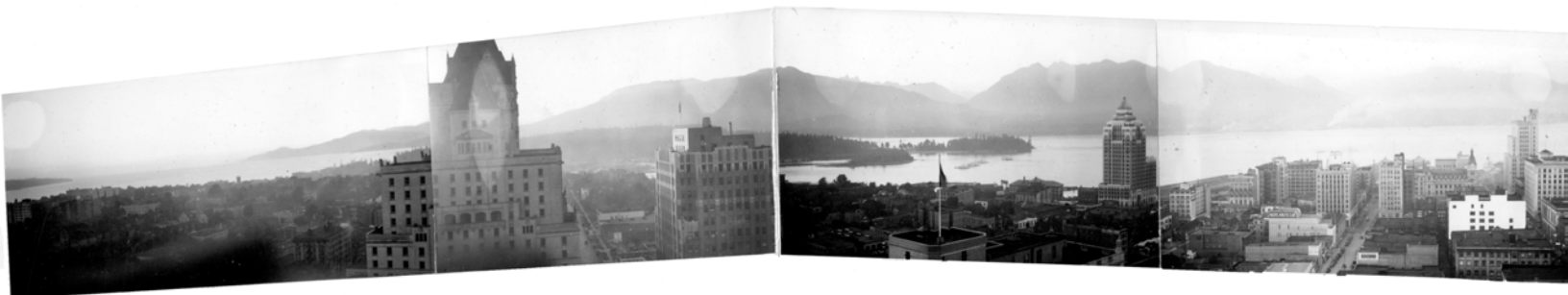
You can start looking at what's on the map, what is not on the map. What is missing? How is it packaged? How is it framed? How is it meant to be used? We don't know a lot of these things, by the way. It's like any historical document that you get. That it tends to all of a sudden put things together spatially, and say, "Well, what implication does it have? What does that mean? Why is this cartographer emphasizing this dimension?" ... And we might, in our minds, think about alternative ways, alternative audiences, alternative purposes. And once you start playing with the map like that, it's a series of questions and answers and arguments, and delivery systems if you wish.

Nadia Amoroso
The Exposed City

In Esmeralda, city of water, a network of canals and a network of streets span and intersect each other. To go from one place to another you have always the choice between land and boat: and since the shortest distance between two points in Esmeralda is not a straight line but a zigzag that ramifies in tortuous optional routes, the ways that open to each passerby are never two, but many, and they increase further for those who alternate a stretch by boat with one on dry land.

A map of Esmeralda should include, marked in different coloured inks, all these routes, solid and liquid, evident and hidden. It is more difficult to fix on the map the routes of the swallows, who cut the air over the roofs, dropping long invisible parabolas with their still wings, darting to gulp a mosquito, spiraling upward, grazing a pinnacle, dominating from every point of their airy paths all the points of the city.

Italo Calvino
Invisible Cities



City of Vancouver Archives CVA 300-50 - View from the Hotel Vancouver, in a constructed panorama. Karl Haspel fonds.

URBAN REPRESENTATIONS: MAPPING_THE INVISIBLE

[seminar](#)

Mon Tues Wed Thurs Fri 1800 - 2100 15 May - 1 Jun Orchard Commons 3074

[office hours/contact info](#)

383 MCML. 2357 Main Mall. Mon 1330 - 1530. Appt's may also be arranged by email. mlewis@sala.ubc.ca

[course description](#)

An alternative contemporary visual survey of the histories, theories, and techniques deployed in the representation of the urban landscape.

sem-i-nar /seminɑ:r/

noun

1. any meeting for an exchange of ideas
2. a course offered for a small group of advanced students

ORIGIN: 1887, from German Seminar "group of students working with a professor," from Latin seminarium "breeding ground, plant nursery" (see seminary). Sense of "meeting for discussion of a subject" first recorded 1944.

[assignments/deliverables](#)

RESEARCH/DESIGN INVESTIGATIONS

- [1.0] A **case-study research project**, in a form negotiated with Instructors/Colleagues, for in-class distribution. Focus: A theoretical/technical subject regarding any form of mapping of personal student interest. A map or map series. (4 hr execution estimate; Due end Week 1) 20%
- [2.0] A **'personal geography' mapping**, any medium/time/scale, describing, in detail, a journey from **'there to here'**. (8 hr execution estimate; Due end Week 2) 30%
- [3.0] An **innovative or original '21st century mapping' proposal**, any medium/time/scale, (12+ hr execution estimate; Due end Week 3) 40%
- [4.0] class participation: attendance, seminar discussion 10%

[maps case study format/content](#)

[year constructed](#)

[location](#)

49.249660 N, 123.119340 W

[media](#)

[author\(s\)](#)

[original size](#)

[scale](#)

[projection system](#)

[target audience](#)

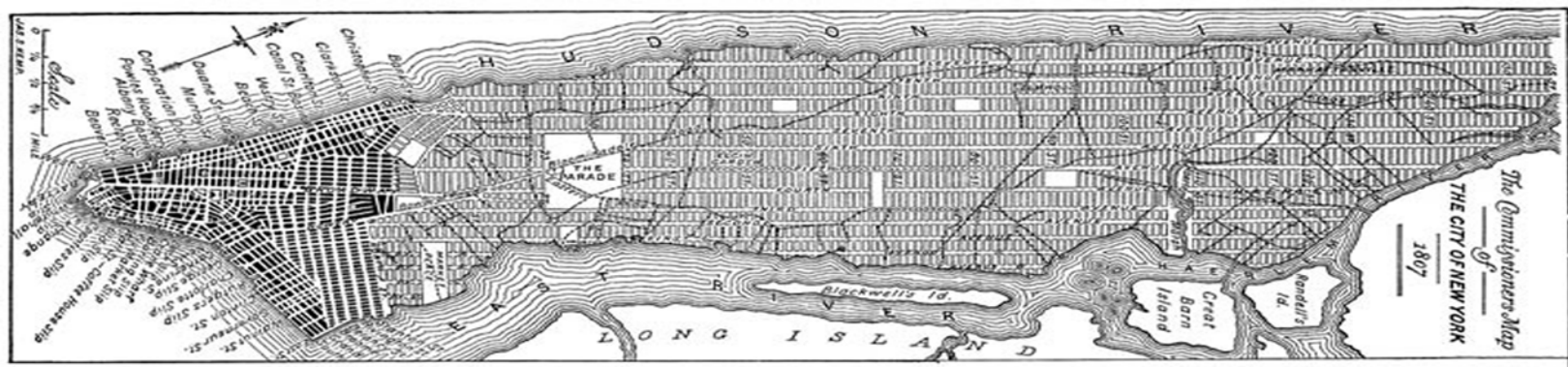
[history/theory](#)

[critique](#)

[analysis](#)

[\(reconstruction\)](#)

Vancouver is a city in British Columbia, Canada at latitude 49°14'24" North, longitude 123°03'00" West



[1.0] CONVENTIONAL/ALTERNATIVE MAPS CASE STUDY TOPICS (including examples of contested territories and representations)

1. Wang Hui 1632-1717, Et Al.
The Kangxi Emperor's Southern Inspection Tour: From The Town Of Benniu To The City Of Changzhou On The Grand Canal

2. Commissioner's Plan of Manhattan New York 1811

3. Babylonian Map of the World Tablet, 5th c. BC

4. Vancouver Lost Streams Map, 2011

5. América-Invertida 1943

6. Mercator Projection Map, 1569

7. Buckminster Fuller (Dymaxion) World Map, 1954

8. Stowage of the British slave ship Brookes under the regulated slave trade act of 1788

9. Facebook World Map, 2011

10. Votes for Women a Success Suffrage Poster, ca. 1911

11. Central Park Map, Greensward Foundation, 1994

12. Stanley Park, Vancouver Park Commission, 1911

13. Zaha Hadid_Plan_Of_The_Peak_Leisure_Club_Hongkong_China_1982

14. United Nations Maps of the World, 1926-present

15. Vancouver Aerial Panorama, 1898

16. Google Earth, 2005

17. Fake Estates, NY, Gordon Matta-Clark, 1974

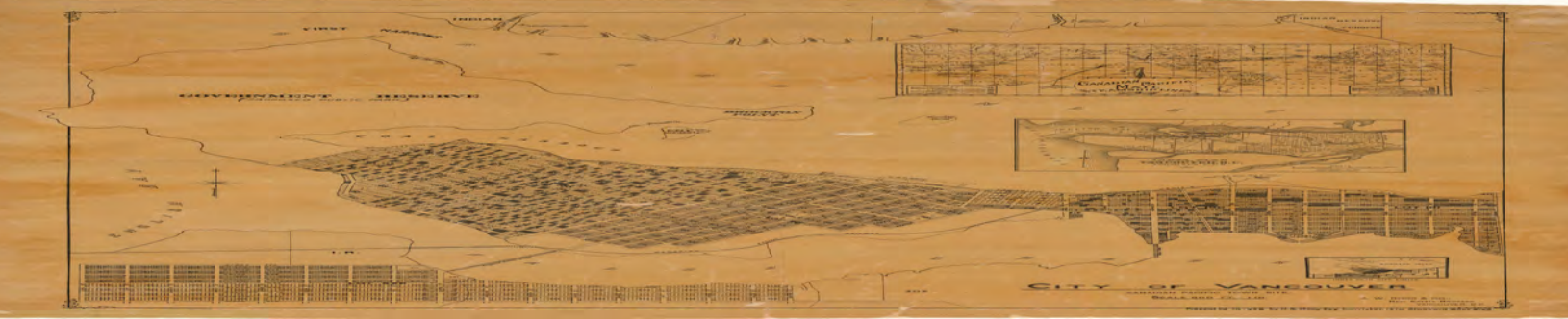
18. Peters Projection Map, 1973

19. Locations of Indian Residential Schools in Canada, 2012

20. Marco Polo's World Travels, 1271-1295

21. LOTR Project: Tolkien's Map of Middle Earth

22. Datascape: Mapping and visualization of air quality levels in Oakland, CA 2013



2017 preliminary seminar schedule [updated 170515]

WEEK 1

15 May Mon	1:1	Agency of Mapping / Vancouver to NY
1800-1845	Introductions / Lecture	
1900-1945	Seminar Structure / Survey / Syllabus / Assignments / Grading Practices etc.	
2000-2045	Mapping Case Study Analysis investigation [1.0] given / Class-Wide Discussion	
16 May Tues	1:10	Invisible Information
1800	Lecture	
1900	break out groups	https://www.edwardtufte.com/tufte/
2000	Class-Wide Discussion	
17 May Wed	1:100	GIS, Data and Visualizations
1800	Lecture	
1900	break out groups	http://www.esri.com/arcgis/about-arcgis
2000	Class-Wide Discussion	
18 May Thurs	1:1000	Maps, Mapping, Cartography
1800	Lecture	
1900	break out groups / Case Study Analysis presentations	http://www.springer.com/us/book/9783642388927
2000	Case Study Analysis presentations	

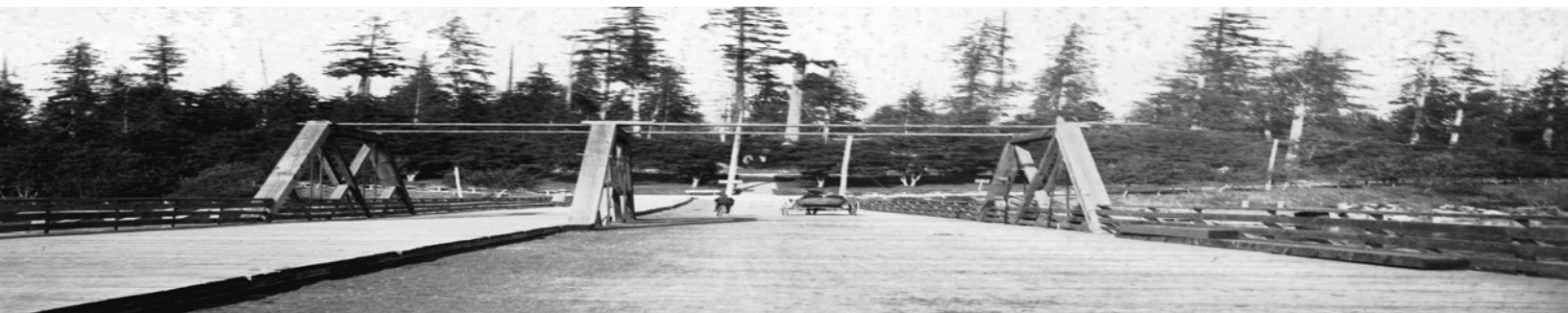
WEEK 2

23 May Tues	1:10,000	Personal Geographies
1800-1845	Lecture / Mapping Personal Geographies investigation [2.0] given	
1900-1945	break out groups / CSA upload [1.0] due	http://www.deniswood.net/maps.htm
2000-2045	Class-Wide Discussion	
24 May Wed	1:100,000	Ancient Maps
1800	Lecture	
1900	break out groups	https://www.theatlantic.com/international/archive/2013/12/12-maps-that-changed-the-world/282666/
2000	Class-Wide Discussion	
25 May Thurs	1:1,000,000	The Map As Artifact
1800	Lecture	
1900	break out groups	http://mapdesign.icaci.org/map-examples/
2000	Class-Wide Discussion	
26 May Fri	1:10,000,000	Mapping: Back to the Future
1800	Lecture	
1900	break out groups / Personal Geographies presentations	https://www.youtube.com/watch?v=3z1cCT2NP4k
2000	Personal Geographies presentations	

WEEK 3

29 May Mon	1:1,000	Maps and Power
1800-1845	Lecture / Mapping for the 21st century investigation [3.0] given	
1900-1945	break out groups / PG upload [2.0] due	http://www.deniswood.net/content/sdarticle.pdf
2000-2045	Class-Wide Discussion	
30 May Tues	1:100	Contemporary Practices
1800	Lecture	
1900	break out groups	http://www.scapestudio.com
2000	Class-Wide Discussion	
31 May Wed	1:10	Agency of Mapping / NY to Vancouver
1800	Lecture	
1900	break out groups	http://www.mcny.org/exhibition/greatest-grid-0
2000	Class-Wide Discussion	
1 Jun Thurs	1:1	Mapping_the Invisible
1800	Mapping for the 21st century presentations/exhibition	
1900	Mapping for the 21st century presentations/exhibition	
2000	Mapping for the 21st century presentations/exhibition	
5 Jun Mon	all coursework due / M21 upload [3.0] due	
1800		

2017 preliminary seminar schedule [updated 170515]



Course Hours

Monday/Tuesday/Wednesday/Thursday/Friday 6PM – 9PM

Location

Vancouver, British Columbia, Canada
Orchard Commons 3074, 6363 Agronomy Road, Vancouver, BC V6T 1Z4
(Unceded xʷməθkʷəy̓əm, Skwxwúmesh & səliwətaʔ territories)

Coordinator / Instructor

Martin Lewis
Adjunct Professor

Office: 383_2357 Main Mall / MacMillan Bldg
Email: mlewis@sala.ubc.ca
Office Hours: Monday 1330-1530 or by appt.

Graduate Tutorial Assistants

Olivia Daigneault Deschenes
oliviadeschenes@gmail.com

Ayishah Chung Yee Chui
ayishahchui@gmail.com

Sources

Online Blog / Tutorials
<https://blogs.ubc.ca/2017mappingtheinvisible/>
tba

NOTE: More specifics will be provided on Mon 15 May 2017.

Overview

Mapping_The Invisible is an alternative, experimental course in a design and representational stream offered by the Landscape Architecture Program in the School of Architecture and Landscape Architecture. It is open to all students in the School, across the disciplines of Architecture, Landscape, Urban and Environmental Design.

The intention of M_TI is to address a significant student concern: that while the design media stream centers on specific software and media used for generating and representing design content, time must also be allotted to engage in a critical dialogue with interdisciplinary urban/nature representations, outside of the particular demands of design studio schedules.

M_TI proposes that concentrated individual and group-focused case-studies, coupled with design-based inquiries, best suite the goal of providing opportunities for this discourse.

Schedule / Meetings

Class meets for three continuous calendar weeks from 6PM-9PM on Mon, Tues, Wed, Thurs evenings, 15 May - 1 Jun 2017.

To accommodate the 22 May holiday, classes will be held on Tues, Wed, Thurs and Fri during the second week.

M_TI will meet in Orchard Commons 3074, 6363 Agronomy Road. Please note that building doors will be open each day until 7 PM. Access will be limited afterwards. OC 3074 is equipped with state-of-the-art AV equipment, as are the break-out areas in the corridors. Available break-out rooms, when available, will be identified at the start of each class. Any group meetings may be held in other locations. Sessions with instructors & T.A.s, or workshops focusing on specific content will be held in designated areas. Dates, times, and locations of any additional meetings will be communicated via email.

Self-Directed Study

Mapping, while generally accepted to be one of the first collective acts of design inquiry in the professions' vast array of analytical tools, remains, to this day, an intensely personal affair. How we individually perceive and document the current world - in its visible and invisible forms- colours the manner in which we project our visions into the future.

The course takes as its premise, that students are inspired and motivated, for the most part, by topics offering opportunities for personal interest and intellectual curiosity. The structure, organization, and overall scheduling of M_TI are designed to offer a unique seminar learning environment.

Software Sources

We will be using multiple software packages for this course. If you need to purchase copies of software, educational versions are available. Some software can be purchased at the UBC Book-store. Much is available on line or through a certified dealer. Try using the following links to track down software. Other specific software requirements will be identified in individual modules.

NOTE: It is your responsibility to obtain and manage software and equipment. The failure of illegally obtained software is not an excuse for the inability to meet assignment deadlines.

Rhinoceros: <http://www.rhino3d.com/sales/north-america/Canada> Use the "Students and Faculty" Tab to see reduced pricing.
3Dtechnics is a dealer located in Vancouver: <http://3dtechnics.com/>

Grasshopper: Grasshopper is an add-on program used in conjunction with Rhino. It can be acquired at the following link: <http://www.grasshopper3d.com/>

AutoCAD: A free copy of AutoCAD can be downloaded here: <http://www.autodesk.com/education/free-software/all>

NOTE: If you are able, consider purchasing AutoCAD Suites at the educational rate. You will receive clean copies of multiple AutoDESK products at substantially reduced rates. You can carry these copies forward for two years after graduation.

This is HIGHLY RECOMMENDED.

Adobe Creative Cloud: Start on-line.

This includes Photoshop, Illustrator, InDesign, and Flash. <http://www.adobe.com/ca/creativecloud.html>

Sketchbook Pro: If you freehand draw with a tablet or on a mobile device, this software package is worth considering and recommended. <http://www.autodesk.com/products/sketchbook-pro/overview>

G.I.S.: Software specifics are available via class instructor/TAs.

Maxwell: A rendering software package. License keys are available. Specifics will be discussed at a later time.

Attendance

Attendance is required.

Health problems, conflicts, or other issues that may prevent or hinder work must be brought to the instructors' attention as soon as possible. Any student with a documented disability needing academic accommodation should speak to the instructor(s) during the first two days of class. Other help may be found via UBC (see link below). Points will be deducted for each unexcused absence. Multiple unexcused absences will be noted, brought to the chair of your program, and may require withdrawal from the course.

Academic Accommodations for Students with Disabilities:

<http://www.universitycounsel.ubc.ca/files/2010/08/policy73.pdf>

Additional information will be provided by instructors of each module. Specific course content is prepared by the instructor for each specific module.

Evaluation

Students will be evaluated and graded on four criteria (listed below). More specific requirements will be provided in each individual assignment:

complexity of ideas, depth of analysis, quality of production
attendance, participation
work habits, progress
projects

A grade will be provided for each assignment.

The final grade will be determined by aggregating grades from each of three required assignments. Oversight for grading will be provided by Professor Lewis.

Course Ethics

Classes will consist of lectures, labs, student presentations, and critiques. All require that you are an active participants in class.

BE PRESENT, BE RESPECTFUL, AND BE PREPARED.

Bring your laptop, tablet, mobile phone and any other necessary tools to every class. We request no live recording of the class lectures.

Be ready to participate. You each have a responsibility to yourself, your classmates, and to your instructors to generate work, attend class, and participate in the progress of all of your colleagues.



City of Vancouver Archives 300-51 - View from the North shore, towards Stanley Park and downtown peninsula, in a constructed panorama. Karl Haspel fonds; Circa 1937

URBAN REPRESENTATIONS: MAPPING THE INVISIBLE

BIBLIOGRAPHY / SOURCES [a]

Architecture Urban Landscape History / Theory

Ambroziak, Brian M. & Ambroziak, Jeffrey R. (1999). *Infinite Perspectives: Two Thousand Years of Three-Dimensional Mapmaking*. Princeton Architectural Press.

Amoroso, Nadia (2010). *The Exposed City_Mapping the Urban Invisibles*. Routledge.

Ballon, Hilary (2012). *The Greatest Grid: The Master Plan of Manhattan 1811-2011*. Columbia University Press.

Calvino, Italo (1974). *Invisible Cities*. University of Michigan Press.

Corner, James & MacLean, Alex (1999). *Taking Measures Across the American Landscape*.

Corner, James (2014). "The Agency of Mapping" in *The Landscape Imagination*. Princeton Architectural Press.

Desimini, Jil & Waldheim, Charles (2016). *Cartographic Grounds : projecting the landscape imaginary*. New York, Princeton Architectural Press.

Harmon, Katherine (2009). *The Map As Art*. Princeton Architectural Press.

Lima, Manuel. (2011). *Visual Complexity: Mapping Patterns of Information*. Princeton Architectural Press.

Lynch, Kevin (1960). *The Image of the City*. The MIT Press.

McHarg, Ian (1967). *Design With Nature*. Wiley & Sons.

Orff, Kate (2016). *Toward an Urban Ecology*. The Monicelli Press.

Perez-Gomez, Alberto & Pelletier, Louise (1997). *Architectural Representation and the Perspective Hinge*. MIT Press.

Rendgren, Sandra & Wiedemenn, Julius (2012). *Information Graphics*. Taschen.

Studio Smack. (2000). *Kapitaal (Capital)*. Film. <https://www.youtube.com/watch?v=h9iNuPM2SyM&t=117s>

Tufte, Edward (1990). *Envisioning Information*. Graphics Press.

Vertov, Dziga & Svilova, Elizaveta (ed.) (1929). *Man With a Movie Camera*. Film.

Landscape Practice

da Cunha, Dilip & Mathur, Anuradha. 2009. *Soak: Mumbai in an Estuary*. National Gallery of Modern Art.

Lack, H. Walter. 2016. *A Garden Eden: Masterpieces of Botanical Illustration*. Taschen.

McLeod, Virginia. 2008. *Detail in Contemporary Landscape Architecture*. Laurence King Publishing.

Mola, Francesc. 2012. *1000 Details in Landscape Architecture: A Selection of the World's Most Interesting Landscaping Elements*. Firefly Books.

World History

De Landa, Manuel. 1997. *A Thousand Years of Non-Linear History*. Zone Books.

Diamond, Jared M. 1999. *Guns, Germs, and Steel: The Fates of Human Societies*. W. W. Norton & Company.

American History

Zinn, Howard. 2003. *A People's History of the American People*. New York : HarperCollins.

Canadian History

Conrad, Margaret; Finkel, Alvin. 2001. *History of the Canadian Peoples: 1867 to Present: Vol 2*. Pearson Canada.

Coupland, Douglas. 2004. *Souvenir of Canada*. Douglas & McIntyre.

Coupland, Douglas. 2004. *Souvenir of Canada 2*. Douglas & McIntyre.

[Hayes, Derek. 2004. *Canada: An Illustrated History*. Douglas & McIntyre.](#)

Hayes, Derek. 2002. *Historical Atlas of Canada: Canada's History Illustrated with Original Maps*. University of Washington Press.

British Columbia / Lower Mainland / Pacific Northwest

[Carlson, Keith Thor. 2001. *A Stó:lo Coast Salish Historical Atlas*. University of Washington Press.](#)

[Cannings, Richard, and Sydney Cannings. 2015. *British Columbia: A Natural History of Its Origins, Ecology, and Diversity with a New Look at Climate Change*. Greystone Books.](#)

Jepson, Tim, and Phil Lee. 1994. *Pacific Northwest Including Western Canada and Alaska, Rough Guide*. Rough Guides.

McGillivray, Brett. 2000. *Geography of British Columbia: People and Landscapes in Transition*. Univ of British Columbia Press.

Peterson, Roger Tory. 1998. *Peterson Field Guide Birds West*. Houghton Mifflin.

Pojar, Jim, and Andy MacKinnon. 1994. *Plants of Coastal British Columbia Including Washington Oregon and Alaska*. Lone Pine Publishing.

Reksten, Terry. 2001. *The illustrated history of British Columbia*. Douglas & McIntyre.

Vancouver Natural History Society. 2001. *A Birder's Guide to Vancouver and the Lower Mainland*. Whitecap Books.

[Wynn, Graeme, and Timothy Oke. 1992. *Vancouver and Its Region*. UBC Press.](#)

Vancouver BC

<http://searcharchives.vancouver.ca/nst-6649>

Davis, Chuck. 2011. *The Chuck Davis History of Metropolitan Vancouver*. Harbour.

[Davis, Chuck. 1997. *The Greater Vancouver book: An urban encyclopedia*. Linkman Press.](#)

Demers, Charles. 2010. *Vancouver Special*. Arsenal Pulp Press.

Lee, John. 2009. *Walking Vancouver: 36 strolls to dynamic neighbourhoods, hip hangouts, and spectacular waterfronts*. Heritage House Publishing Co. Ltd.

Macdonald, Christopher, Veronica Gillies, Helen Malkin, and Nancy Dunton. 2010. *A Guidebook to Contemporary Architecture in Vancouver*. Douglas & McIntyre.

Snyders, Tom, and Jennifer O'Rourke. 2002. *Namely Vancouver: A Hidden History of Vancouver Place Names*. Arsenal Pulp Press.

Straley, Gerald Bane. 1992. *Trees of Vancouver*. UBC Press.

Stanley Park / Central Park

<http://stanleyparkecology.ca>

<http://www.centralparknyc.org>

[Barman, Jean. 2005. *Stanley Park's Secret: The Forgotten Families of Whoi Whoi, Kanaka Ranch, and Brockton Point*. Harbour.](#)

[Johnson, E. Pauline \[aka Tekahionwake\]. 1911. *Legends of Vancouver & Victoria, B.C.* David Spencer, Limited.](#)

[Kheraj, Sean. 2013. *Inventing Stanley Park: An Environmental History*. UBC Press.](#)

Vancouver Natural History Society, and Nature Vancouver. 2006. *Wilderness on the Doorstep: Discovering Nature in Stanley Park*. Harbour.

popular fiction/literature

Lowry, Malcolm. 1947. *Under the Volcano*. Reynal & Hitchcock.

Rutherford, Edward. 2009. *New York: The Novel*. Doubleday, Canada.

[Taylor, Timothy. 2001. *Stanley Park*. Vintage.](#)

Washington, DC

<http://maps.dcoz.dc.gov/HistoricZoning/>

Ottawa, Ontario

<http://maps.ottawa.ca/geoOttawa/>

Stockholm, Sweden

<http://www.lantmateriet.se/en/>

New York, NY

<http://www1.nyc.gov/nyc-resources/nyc-maps.page>

Mumbai, India

<https://maharashtratourism.gov.in/map>

landscape / urban design practices

1:1 LANDSKAB / A24 LANDSCHAFT / ASPECT STUDIOS / ATELIER JACQUELINE OSTY & ASSOCIÉS /
ATELIER LOIDL / BASE / BRUTO / BUREAU B+B / BURO LUBBERS LANDSCAPE ARCHITECTURE &
URBANISM / BURO SANT EN CO / CLAUDE CORMIER + ASSOCIÉS / D.I.R.T. STUDIO / EFFEKT / EMF,
ESTUDI MARTÍ FRANCH / ESPACE LIBRE / GILLESPIES / GUSTAFSON PORTER / HALVORSON DESIGN
PARTNERSHIP / HASSELL / HOSPER / ILEX [PAYSAGES-URBANISME] / JAMES CORNER FIELD
OPERATIONS / JMD DESIGN / KARRES+BRANDS / LATZ + PARTNER / LINK LANDSKAP / L J B AS / METRO
ARQUITETOS / MEYER + SILBERBERG LANDSCAPE ARCHITECTS / MICHAEL VAN GESSEL / NIVÅ
LANDSKAPSARKITEKTUR / OKRA / OLIN / OMGEVING / RAAAF / RAINER SCHMIDT
LANDSCHAFTSARCHITEKTEN + STADTPLANER / RAMBOLL STUDIO DREISEITL / REHWALDT
LANDSCHAFTSARCHITEKTEN / RMP STEPHAN LENZEN LANDSCHAFTSARCHITEKTEN / SCAPE
LANDSCHAFTSARCHITEKTEN / SNØHETTA / STROOTMAN LANDSCHAPSARCHITECTEN / STUDIO AKKA /
STUDIO VULKAN / SWA GROUP / TAYLOR CULLITY LETHLEAN / TERRITOIRES PAYSAGISTES / THORBJÖRN
ANDERSSON WITH SWECO ARCHITECTS / TOPOTEK 1 / TURENSCAPE / URBANEGESTALT / URBICUS /
VETSCHPARTNER / VLADIMÍR BALDA

POPULISTS

architectural practices

Rojkind	http://rojkindarquitectos.com/wp/
BIG	http://big.dk
MAD	http://madarchitects.com
REX	http://www.rex-ny.com
JDS	http://jdsa.eu
WOHA	http://www.woha.net
JAJA	http://www.ja-ja.dk
SeARCH	https://search.nl
COBE	http://www.cobe.dk
HWKN	http://hwkn.com
Ole Scheeren	http://buro-os.com
Sadar+Vuga	http://www.sadarvuga.com
Mass Studies	http://massstudies.com
SOA	http://www.soa-architectes.fr/en/
Lola	http://www.lolaweb.nl
X-tu	http://www.x-tu.com
ZUS Productora EEESTUDIO	http://productora-df.com.mx
ENORME	http://enormestudio.es/proyectos-arquitectnicos/
NLE	http://www.nleworks.com
People's Architecture Office	http://www.peoples-architecture.com/pao/
Elemental	http://www.elementalarchitecture.com
Frida Escobedo	http://fridaescobedo.net/pagina_de_inicio.html
PLAN:B	http://planbgroup.net
SMAR architecture studio	http://www.smar-architects.com
El Equipo de Mazzanti	http://www.elequipomazzanti.com/en/welcome-to-mazzanti/
Tatiana Bilbao	http://www.tatianabilbao.com
Cadaver & Sola-Morales	http://www.ca-so.com
LOCALARCHITECTURE	http://localarchitecture.ch
Hiroshi Nakamura & NAP	http://www.nakam.info/en/
Austin Maynard	http://maynardarchitects.com/Site/splash.html
Manuel Ocana	https://manuelocana.com
SKEPTICS/CONTINGENT	
SO-IL	http://so-il.org/
Sou Fujimoto	http://www.sou-fujimoto.net
Elding Oscarson	http://www.eldingoscarson.com/
frundgallina	http://www.frundgallina.ch/
Lateral Office	http://lateraloffice.com/
Adamo Faiden	http://www.adamo-faiden.com/
Tham and Videgard	http://www.tvark.se/
Studio Weave	http://www.studioweave.com/
OPEN	http://www.openarch.com/
AZL	http://www.azlarchitects.com/en/
Encore Hereux	http://encoreheureux.org/
Besler & Sons	http://www.beslerandsons.com/
Arquitectura	http://www.arquitectura.net/
Anne Holtrop	http://www.anneholtrop.nl/Index
RAAAF	http://www.raaaf.nl/
Arch Studio	http://www.arch-studio.hu/archstud/quickstart/
SMS	http://smsarquitectos.com/
Bureau Spectacular A21 studio	http://smsarquitectos.com/
Supermachine MAIO	https://supermachine.co/
Langarita Navarro	http://www.langarita-navarro.com/
Go Hasegawa	http://ghaa.co.jp
KUU	http://www.kuu.ee/
Bittertang	http://bittertang.com/
Jun Igarashi	http://jun-igarashi.com/en/top.html
onishimaki+hyakudayuki	http://onishihyakuda.jp/
First Office	http://firstoff.net/
Akihisa Hirata	http://www.hao.nu/
MOS	http://www.mos.nyc/
514NE	http://www.archdaily.com/office/514ne
NU	http://www.nu-architects.com.au/
DeVylderVinckTailieu	http://www.architectendvyt.com/projects
Building Building	http://www.buildingbuilding.org/
OFFICE	http://www.officekdvs.com/
URA	http://www.ura.be/
Agwa	http://www.agwa.be/#&gid=1&pid=1
PLURAL	http://www.plural.sk/plural
O-office	http://www.o-officearch.com/
Neri Hu	http://www.neriandhu.com/index_cn.php
Arquitectura G	https://arquitecturag.wordpress.com/
Bosch Capdeferro	https://www.boschcapdeferro.com/en
OOPEAA	http://oopeaa.com
Menos es Mais	http://menosemais.com/
Joao Mendes Ribeiro	http://www.joaomendesribeiro.com/
ARRHOV FRICK	http://www.rrhovfrick.se/
Pascal Flammer	http://pascalflammer.com/
Series Architects	http://www.serie.co.uk/
Andrew Kovacs	http://www.aud.ucla.edu/faculty/andrew_kovacs_39.html

REVISIONISTS NEW HISTORICISTS CONSTITUTIONALISTS

Dogma <http://www.dogma.name/about.html>
Baukuh http://www.aud.ucla.edu/faculty/andrew_kovacs_39.html
LAN <http://www.lan-paris.com/fr/>
EM2N <http://www.em2n.ch/>
GAFPA <http://www.gafpa.net/>
a-practice <http://apractice.be/>
Baukunst <http://www.bau-kunst.eu/>
Vector <http://www.vectorarchitects.com/m/index.php/home>
Kahn Malvezzi <http://kuehnmalvezzi.com>

Nord <https://www.nordarchitects.dk/>
Johannes Normender <http://www.norlander.se/>
Hall McKnight <http://www.hallmcknight.com/>
FHV <http://www.fhvarchitectes.ch/>
Adam Khan Architects <http://adamkhan.co.uk/>
DRDH <http://www.drhdarchitects.co.uk/>
Clancy Moore <http://www.clancymoore.com/Welcome.html>
6a architects <http://www.6a.co.uk/>
Johnston Marklee <http://www.johnstonmarklee.com/>
Duggan Morris <http://www.dugganmorrisarchitects.com/>
Nameless <http://www.archdaily.com/office/nameless-architecture>
Barozzi Veiga <http://barozzeveiga.com/>
Carmody Groarke <http://www.carmodygroarke.com/>

SAMI <http://www.sami-arquitectos.com/>
CC arquitectos: <http://www.ccarquitectos.com.mx/>
manuel cernantes cespedes
METRO <http://www.metro.com.br/news/index>
Rintal Eggertsson <http://www.ri-eg.com/>
de Paor <http://archiseek.com/tag/de-paor-architects/>
Peso Von Ellrichshausen <http://pezo.cl/?m=1>
TEd'A <http://www.tedarquitectes.com/>
Paulo David <http://www.archdaily.com/office/paulo-david>
Christ & Gantenbein <http://www.christgantenbein.com/>

MATERIAL FUNDAMENTALISTS

E2A <http://www.e2a.ch/>
Brandlhuber <http://brandlhuber.com/>
ZAO/standardarchitecture <http://www.standardarchitecture.cn/>
Li Xiadong <http://www.lixiaodong.net/index.html>
Vo Trong Nghia <http://votrongnghia.com/>
Studio Mumbai <http://studiomumbaiarchitects.blogspot.ca>
Herbst <http://herbstarchitects.co.nz/>
Raphael Zuber <http://www.raphaelzuber.com/>
Christian Kerez <http://www.kerez.ch/>
Carla Juacaba <http://www.carlajuacaba.com.br/>
ensemble studio <https://www.ensemble.info/>
Jose Maria Sanchez garcia <http://jmsg.es>
Gabinete de Arquitectura <http://www.gabdearqu.com/>
Eduardo Castillo <https://arqecastillo.blogspot.ca/>
Smilijan Radic <http://www.archdaily.com/788812/spotlight-smiljan-radic>

Kéré Architecture <http://www.kere-architecture.com/>
Wang Shu <http://www.archdaily.com/867965/wang-shu-architecture-is-not-just-an-object-that-you-place-in-the-environment>
Anna Heringer <http://www.anna-heringer.com/>

ACTIVISTS

Raumlabor Berlin <http://raumlabor.net/>
Santiago Cirugeda <http://spatialagency.net/database/santiago.cirugeda>
Orkidstudio <https://orkidstudio.org/>
DAAR <http://www.decolonizing.ps/site/about/>
Urko Sanchez <http://urkosanchez.com/en/home.php>
Made in Earth <http://www.madeinearth.it/>
A(n) Office <http://anoffice.us/>
Urban think Tank <http://u-tt.com/>
Anne Feenstra <https://archforhumanity.blogspot.ca/p/about-us.html>
MASS Design Group <https://massdesigngroup.org/>
RUF <https://www.chinese-architects.com/en/rural-urban-framework-hong-kong>
HollmenReuter Sandman <http://www.hollmenreutersandman.com/>

Fake Industries Architectural Agonism <http://www.fakeindustries.org/>
Assemble <http://assemblestudio.co.uk/>
Carl Turner Architects <http://www.ct-architects.co.uk/>
HAT <http://www.hatprojects.com/>
AAA <http://www.urbantactics.org/>
All Zone <http://www.allzonedesignall.com/>
TYIN tTegnesteu <http://www.tyinarchitects.com>

AUSTERITY CHIC COSMOPOLITICAL TECHNOCRATIC

H architectes	http://www.harquitectes.com/
Atelier Bow-Wow	http://www.bow-wow.jp
BAST	http://www.bast0.com/
AMUNT	http://www.amunt.info/
Architecture 00	http://www.architecture00.net/
Ecosistema urbano	http://www.ecosistemaurbano.com/
Bruther	http://bruther.biz/
HHF	http://www.hhf.ch/hhf
David Kohn	http://www.davidkohn.co.uk/
Asif Kahn	http://www.asif-khan.com/practice/
AWP:	
office for territorial reconfiguration	http://www.awp.fr/
Carlo Ratti	https://www.carloratti.com/
Selgas Cano	http://www.selgascano.net/
Andres Jaque Office for Political Innovation	http://andresjaque.net
Izaskun Chinchilla	http://izaskunchinchilla.es/

TECHNO-CRITICAL

THE LIVING	http://www.thelivingnewyork.com/
Terreform One	http://www.terreform.org/
Phillippe Rahm	http://www.philipperahm.com/
Territorial Agency	https://transmediale.de/john-palmesino-territorial-agency-en
Benjamin Dillenburger	https://benjamin-dillenburger.com/
Michael Hansmeyer	http://www.michael-hansmeyer.com/
Aranda/Lasch	http://arandalasch.com/
Gramazio Kohler	http://www.gramaziokohler.arch.ethz.ch/
Achim Menges	http://www.achimmenges.net
Liam Young	https://soa.princeton.edu/content/liam-young
Weizman/Forensic Architecture	http://www.forensic-architecture.org/

Maps, Cartography, Mapping

www.esri.com

<http://www.bl.uk/magnificentmaps/>

<https://cadmapper.com>

<https://uli.org>

<http://apis-cor.com/en/>

<http://www.nadiaamoroso.com>

<http://www1.nyc.gov/nyc-resources/nyc-maps.page>

<http://vancouver.ca/your-government/vanmap.aspx>

<http://www.hellobc.com/british-columbia/transportation-maps/maps.aspx>

<http://www.musqueam.bc.ca>

<http://www.centralparknyc.org>

<http://stanleyparkecology.ca>

<http://www.humansofnewyork.com>

<http://www.wordsinspace.net/urban-media-archaeology/2011-fall/2011/11/30/inverted-map-of-south-america/>

<https://www.brainpickings.org/tag/maps/>

<http://www.mcny.org/exhibition/greatest-grid>

<http://www.skyscraper.org/timeformations/animation.html>



URBAN REPRESENTATIONS: MAPPING THE INVISIBLE

name: email: seminar: Mon Tues Wed Thurs Fri 15 May - 1 Jun 6-9PM

course description

An alternative contemporary visual survey of the histories, theories, and techniques deployed in the representation of the urban landscape.

a propos

You can start looking at what's on the map, what is not on the map. What is missing? How is it packaged? How is it framed? How is it meant to be used? We don't know a lot of these things, by the way. It's like any historical document that you get. That it tends to all of a sudden put things together spatially, and say, "Well, what implication does it have? What does that mean? Why is this cartographer emphasizing this dimension?" ... And we might, in our minds, think about alternative ways, alternative audiences, alternative purposes. And once you start playing with the map like that, it's a series of questions and answers and arguments, and delivery systems if you wish.

Gerald A. Danzer

program

Several scales of maps, mapping, cartographic research and a final exhibition of seminar work.

sources

Please cite theoretical and/or fictional writer[s] of personal interest.

case studies

Please cite three maps/series of representations of personal interest.

technique

Please identify preferred OS platforms. Proficiency in modelling/representation/presentation software. Proficiency in [laser, CNC, 3D printing].

environment

Identify your specific interests: [Planning, Architecture, Landscape Architecture, Urban Design, Environmental Design.](#)

sites

Please identify three alternative Local, regional and international urban areas of personal interest:

practice

Name three architectural / landscape architectural / alternative conceptual design practice firms of personal interest:

Landscape Architecture Program / School of Architecture + Landscape Architecture
 University of British Columbia
 LARC 582D 2017S

SUN	MON	TUES	WED	THURS	FRI	SAT
2017	MAY					
	1	2	3	4	5	6
7	8	9	10	11	12	13
14	WEEK 1				19	20
	15	16	17	18		
	<i>Conventions/Rhetoric</i> Introductions Survey Syllabus Review Agencies of Mapping Invisible Cities Six Memos Powers of Ten Cartographic Grounds	<i>Conventions/Rhetoric</i> [In]visible Information	<i>Conventions/Rhetoric</i> GIS, Data and Visualizations	<i>Conventions/Rhetoric</i> Maps, Cartography, Mapping CASE STUDY PRESENTATIONS		
21	22	WEEK 2			26	27
		23	24	25	26	
		<i>Observations/Indifferences</i> Personal Geographies	<i>Observations/Indifferences</i> Ancient Maps	<i>Observations/Indifferences</i> The Map As Artifact	<i>Observations/Indifferences</i> Mapping: Back to the Future PERSONAL GEOGRAPHIES PRESENTATIONS	
28	WEEK 3			1	2	3
	29	30	31	1		
	<i>Innovations/Traditions</i> Maps and Power	<i>Innovations/Traditions</i> Contemporary Practices	<i>Innovations/Traditions</i> The Agency of Mapping	<i>Innovations/Traditions</i> MAPPING FOR THE 21st c. PRESENTATIONS EXHIBITION		

JUN