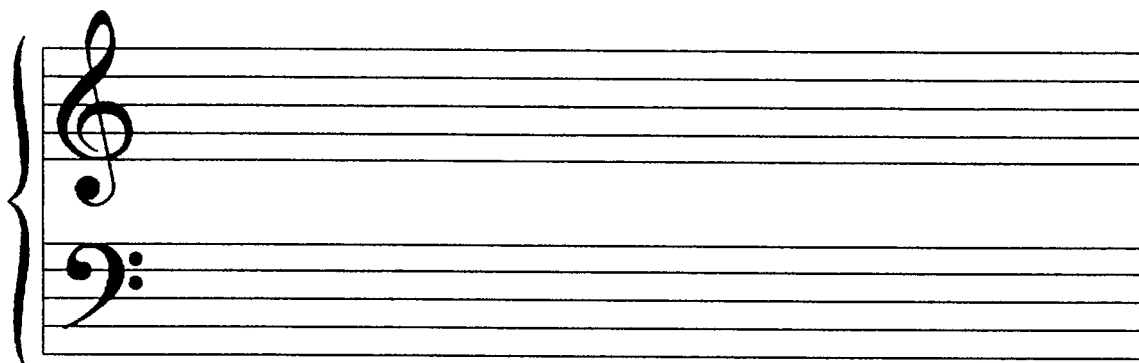
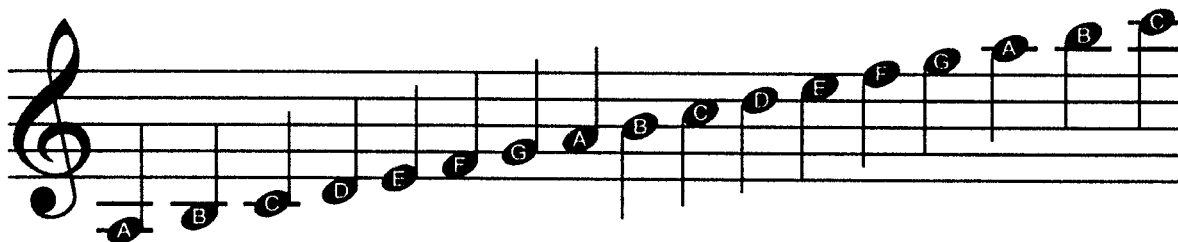


Reference Sheet

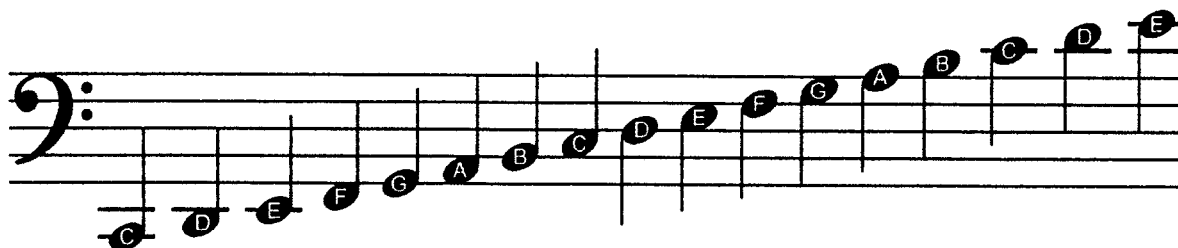
When reading music, all of the notes appear on the *grand staff*, which looks like this:



The top clef is called the *treble clef*. Here are the note names as they appear on the treble clef:

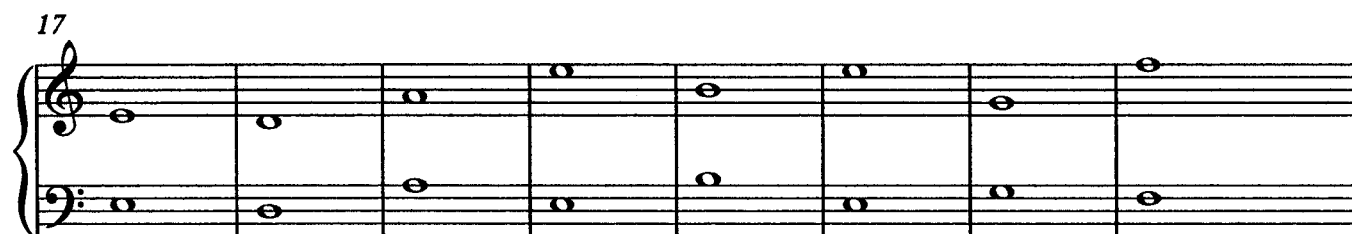


The bottom clef is called the *bass clef*. Here are the note names as they appear on the bass clef:



Note Practice 1

Name: _____



Handwritten signature

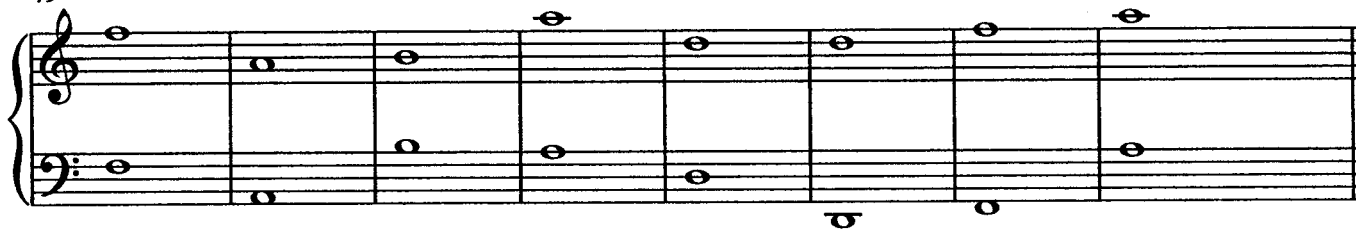
33



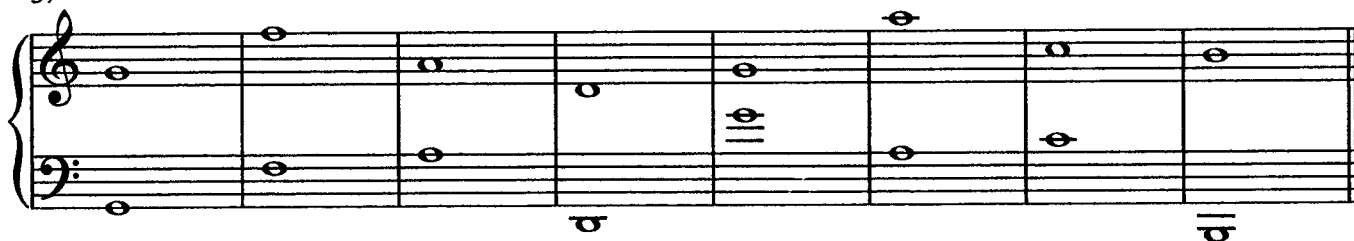
41



49



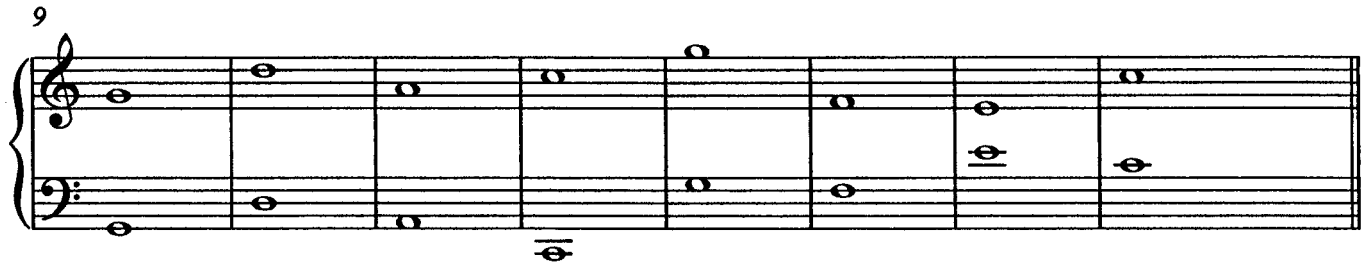
57

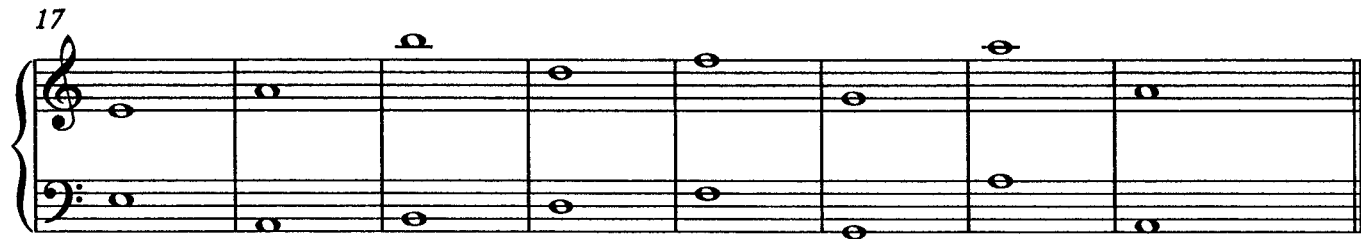


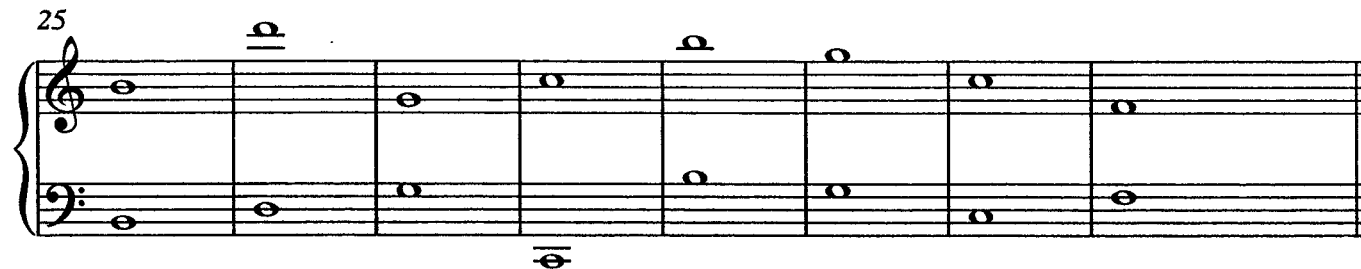
Note Practice 2

Name: _____





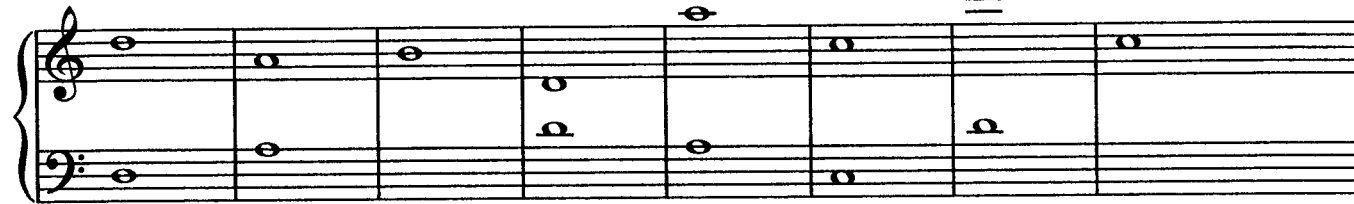




33



41



49



57



Note Practice 3

Name: _____

Measures 1-8 of the first system. The treble clef contains whole notes: C4, D4, E4, F4, G4, A4, B4, C5. The bass clef contains whole notes: C3, D3, E3, F3, G3, A3, B3, C4. Below the staff are eight dashed lines for note identification.

9

Measures 9-16 of the first system. The treble clef contains whole notes: D4, E4, F4, G4, A4, B4, C5, D5. The bass clef contains whole notes: D3, E3, F3, G3, A3, B3, C4, D4. Below the staff are eight dashed lines for note identification.

17

Measures 17-24 of the first system. The treble clef contains whole notes: E4, F4, G4, A4, B4, C5, D5, E5. The bass clef contains whole notes: E3, F3, G3, A3, B3, C4, D4, E4. Below the staff are eight dashed lines for note identification.

25

Measures 25-32 of the first system. The treble clef contains whole notes: F4, G4, A4, B4, C5, D5, E5, F5. The bass clef contains whole notes: F3, G3, A3, B3, C4, D4, E4, F4. Below the staff are eight dashed lines for note identification.

2

33



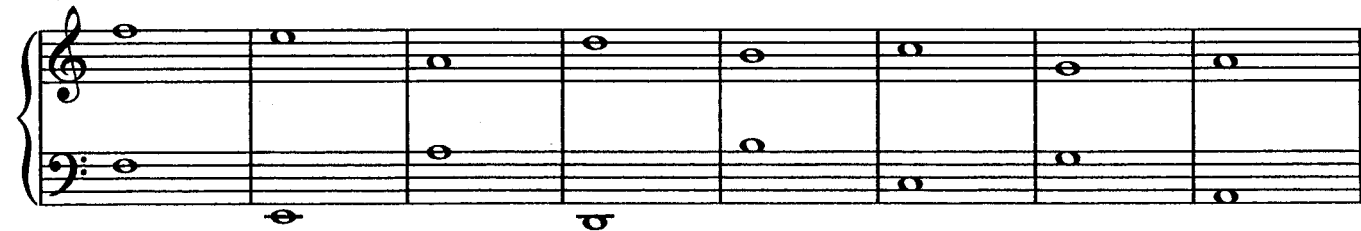
41



49



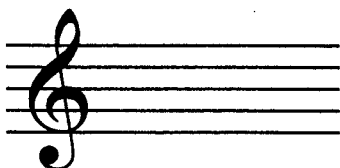
57



Reference Sheet

For Sharps

Sharps: When a sharp symbol is placed next to a note, that note is to be played one semitone higher. When a sharp is placed in the key signature, that indicates that all of the corresponding notes are to be played sharp.



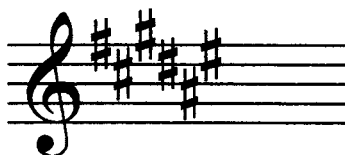
Key of C
There are no sharps in this key



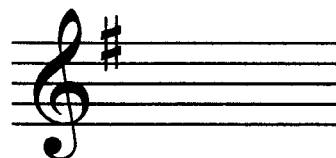
Key of D
All F's and C's are played sharp



Key of E
All F's, C's, G's, and D's are played sharp



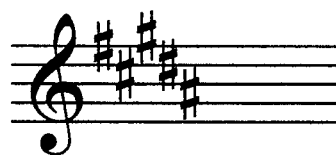
Key of F Sharp
All F's, C's, G's, D's, A's, and
E's are played sharp



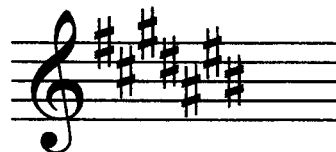
Key of G
All F's are played sharp



Key of A
All F's, C's, and G's are played sharp



Key of B
All F's, C's, G's, D's, and A's
are played sharp



Key of C Sharp
All F's, C's, G's, D's, A's, E's,
and B's are played sharp

How to remember the order of sharps:
Father Charles Goes Down And Ends Battle
(F, C, G, D, A, E, B)

Note Practice 4

Name: _____

9

17

25

33

41

49

57

Reference Sheet

For Flats

Flats: When a flat symbol is placed next to a note, that note is to be played one semitone lower. When a flat is placed in the key signature, that indicates that all of the corresponding notes are to be played flat.



Key of F
All B's are played flat



Key of B Flat
All B's and E's are played flat



Key of E Flat
All B's, E's and A's are played flat



Key of A Flat
All B's, E's, A's, and D's are played flat



Key of D Flat
All B's, E's, A's, D's and G's are played flat



Key of G Flat
All B's, E's, A's, D's, G's, and C's are played flat

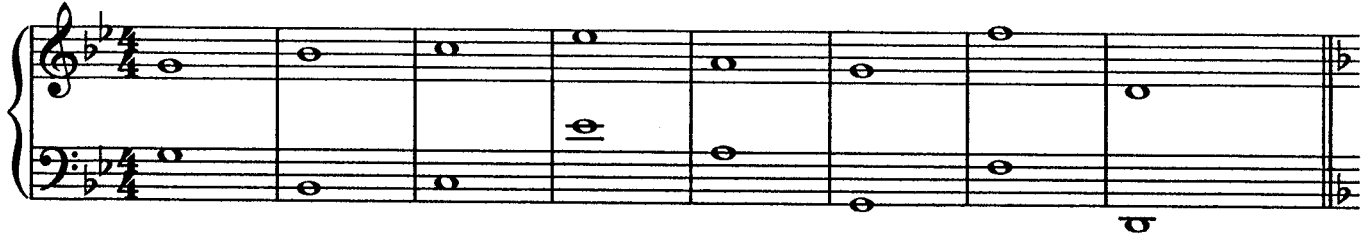


Key of C Flat
All B's, E's, A's, D's, G's, C's
and F's are played flat

How to remember the order of flats:
Battle Ends And Down Goes Charles' Father
(B, E, A, D, G, C, F)

Note Practice 5

Name: _____



33

Handwritten musical score for measures 33-40. The music is in 2/4 time, key of B-flat major (two flats). The melody in the treble clef consists of half notes: B-flat, A, G, F, E, D, C, B-flat. The bass line consists of half notes: B-flat, A, G, F, E, D, C, B-flat. There are two fermatas over the final notes of both staves. Below the staves are eight horizontal dashed lines for practice.

41

Handwritten musical score for measures 41-48. The melody in the treble clef consists of half notes: B-flat, A, G, F, E, D, C, B-flat. The bass line consists of half notes: B-flat, A, G, F, E, D, C, B-flat. There are two fermatas over the final notes of both staves. Below the staves are eight horizontal dashed lines for practice.

49

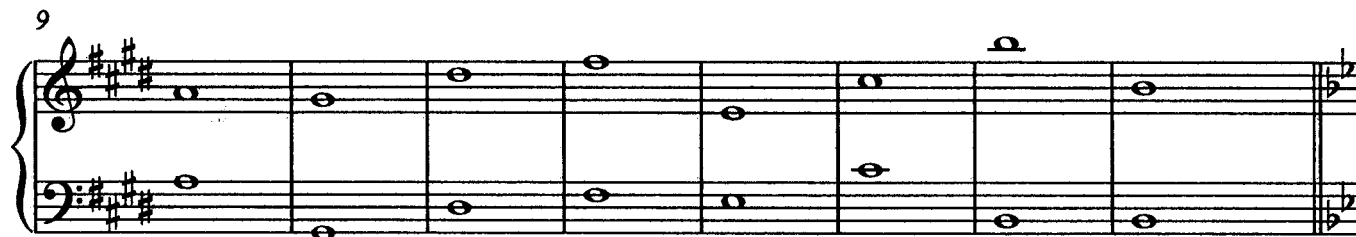
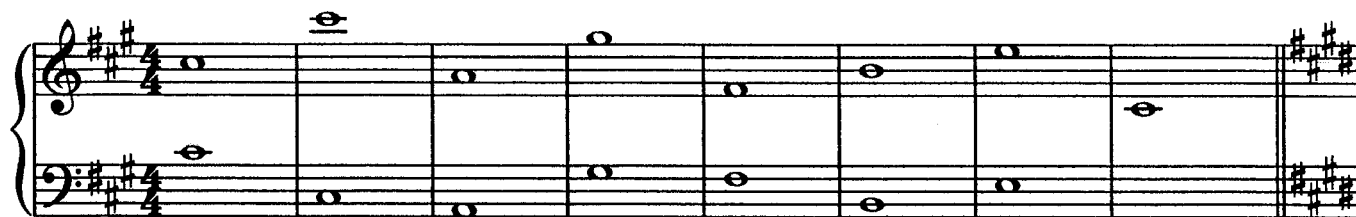
Handwritten musical score for measures 49-56. The melody in the treble clef consists of half notes: B-flat, A, G, F, E, D, C, B-flat. The bass line consists of half notes: B-flat, A, G, F, E, D, C, B-flat. There are two fermatas over the final notes of both staves. Below the staves are eight horizontal dashed lines for practice.

57

Handwritten musical score for measures 57-64. The melody in the treble clef consists of half notes: B-flat, A, G, F, E, D, C, B-flat. The bass line consists of half notes: B-flat, A, G, F, E, D, C, B-flat. There are two fermatas over the final notes of both staves. Below the staves are eight horizontal dashed lines for practice.

Note Practice 6

Name: _____



33



41



49



57



Note Practice 7

Name: _____

9

17

25

33

Measures 33-40 of a musical score. The key signature has four sharps (F#, C#, G#, D#). The melody in the treble clef consists of half notes: F#4, A4, B4, C5, B4, A4, G#4, F#4. The bass line consists of half notes: D#3, F#3, A3, B3, C4, D4, E4, F#4. There are fermatas over measures 35 and 36. A dashed line is below the staff.

41

Measures 41-48 of a musical score. The key signature has two flats (Bb, Eb). The melody in the treble clef consists of half notes: Bb4, D5, Eb5, F5, Eb5, D5, C5, Bb4. The bass line consists of half notes: Bb3, D4, Eb4, F4, Eb4, D4, C4, Bb4. There are fermatas over measures 45 and 46. A dashed line is below the staff.

49

Measures 49-56 of a musical score. The key signature has two sharps (F#, C#). The melody in the treble clef consists of half notes: F#4, A4, B4, C5, B4, A4, G#4, F#4. The bass line consists of half notes: D#3, F#3, A3, B3, C4, D4, E4, F#4. There are fermatas over measures 53 and 54. A dashed line is below the staff.

57

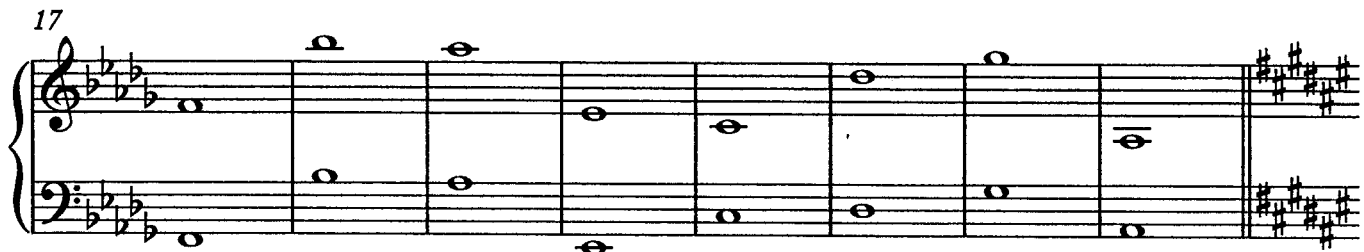
Measures 57-64 of a musical score. The key signature has four flats (Bb, Eb, Ab, Db). The melody in the treble clef consists of half notes: Bb4, D5, Eb5, F5, Eb5, D5, C5, Bb4. The bass line consists of half notes: Bb3, D4, Eb4, F4, Eb4, D4, C4, Bb4. There are fermatas over measures 61 and 62. A dashed line is below the staff.

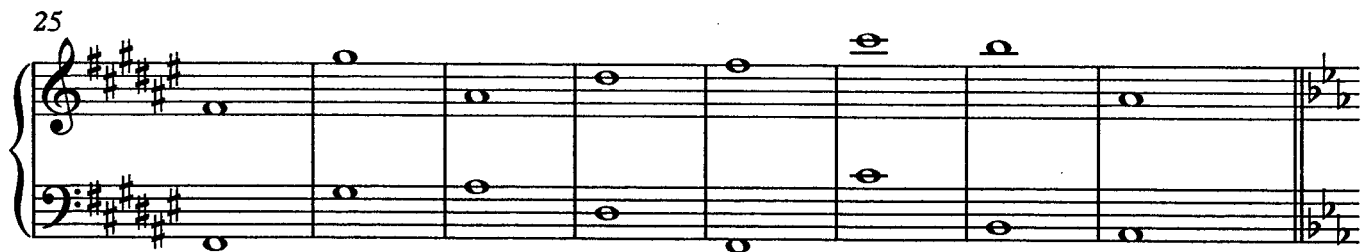
Note Practice 8

Name: _____









33

Measures 33-40 of a musical score. The key signature has two flats (B-flat and E-flat). The melody in the treble clef consists of half notes: G3, A3, B3, C4, D4, E4, F4, G4. The bass line in the bass clef consists of half notes: G2, F2, E2, D2, C2, B1, A1, G1. There are dynamic markings: *p* (piano) above measure 34 and below measure 38. A repeat sign is at the end of measure 40. Below the staff are eight horizontal lines for a vocal line.

41

Measures 41-48 of a musical score. The key signature changes to three sharps (F#, C#, G#). The melody in the treble clef consists of half notes: A4, B4, C5, D5, E5, F#5, G#5, A5. The bass line in the bass clef consists of half notes: G3, F#3, E#3, D#3, C#3, B3, A3, G3. There are dynamic markings: *p* (piano) above measure 45 and below measure 48. A repeat sign is at the end of measure 48. Below the staff are eight horizontal lines for a vocal line.

49

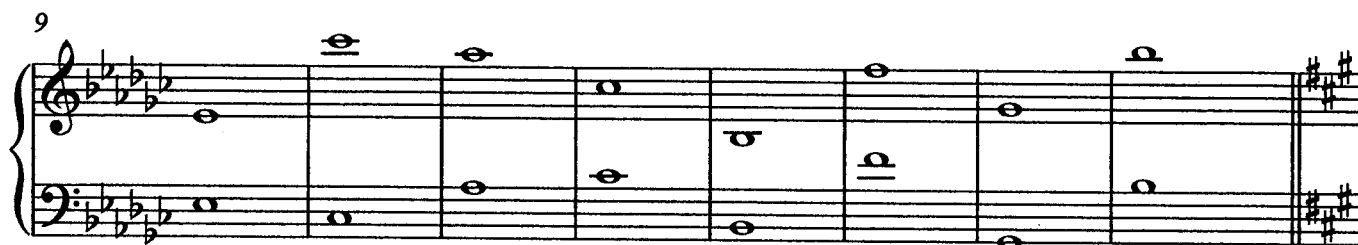
Measures 49-56 of a musical score. The key signature changes back to two flats (B-flat and E-flat). The melody in the treble clef consists of half notes: G3, A3, B3, C4, D4, E4, F4, G4. The bass line in the bass clef consists of half notes: G2, F2, E2, D2, C2, B1, A1, G1. There are dynamic markings: *p* (piano) above measure 52 and below measure 55. A repeat sign is at the end of measure 56. Below the staff are eight horizontal lines for a vocal line.

57

Measures 57-64 of a musical score. The key signature has two flats (B-flat and E-flat). The melody in the treble clef consists of half notes: G3, A3, B3, C4, D4, E4, F4, G4. The bass line in the bass clef consists of half notes: G2, F2, E2, D2, C2, B1, A1, G1. There are dynamic markings: *p* (piano) above measure 58, *p* (piano) above measure 61, and *p* (piano) below measure 64. A repeat sign is at the end of measure 64. Below the staff are eight horizontal lines for a vocal line.

Note Practice 9

Name: _____



33

Measures 33-40 of a musical score. The key signature has two flats (B-flat and E-flat). The melody in the treble clef consists of half notes: B-flat, A, G, F, E, D, C, B. The bass line consists of half notes: B-flat, A, G, F, E, D, C, B. There are fermatas over measures 35 and 36. The system ends with a double bar line and a key signature change to two sharps (F-sharp and C-sharp).

41

Measures 41-48 of a musical score. The key signature has two sharps (F-sharp and C-sharp). The melody in the treble clef consists of half notes: B, A, G, F, E, D, C, B. The bass line consists of half notes: B, A, G, F, E, D, C, B. There are fermatas over measures 45 and 46. The system ends with a double bar line and a key signature change to two flats (B-flat and E-flat).

49

Measures 49-56 of a musical score. The key signature has two flats (B-flat and E-flat). The melody in the treble clef consists of half notes: B-flat, A, G, F, E, D, C, B. The bass line consists of half notes: B-flat, A, G, F, E, D, C, B. There are fermatas over measures 51 and 52. The system ends with a double bar line and a key signature change to two sharps (F-sharp and C-sharp).

57

Measures 57-64 of a musical score. The key signature has two sharps (F-sharp and C-sharp). The melody in the treble clef consists of half notes: B, A, G, F, E, D, C, B. The bass line consists of half notes: B, A, G, F, E, D, C, B. There are fermatas over measures 61 and 62. The system ends with a double bar line.

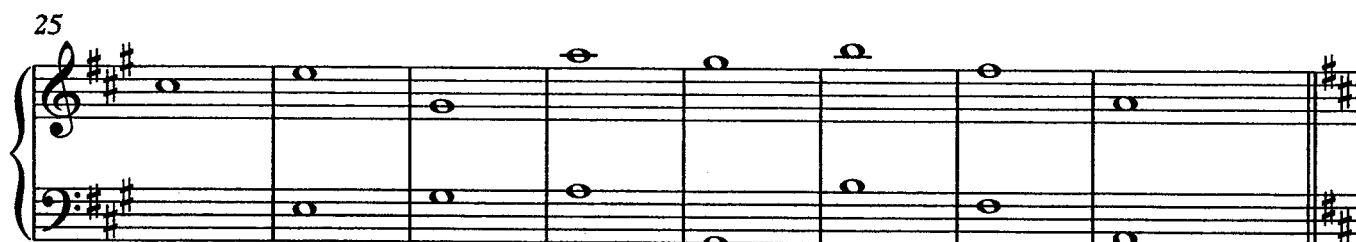
Note Practice 10

Name: _____









62

33

Measures 33-40 of a musical score. The key signature is two sharps (F# and C#). The melody in the treble clef consists of half notes: G4, A4, B4, C5, B4, A4, G4, F#4. The bass line consists of half notes: E3, D3, C3, B2, A2, G2, F#2, E2. There are fermatas over measures 34, 36, and 38. A double bar line is at the end of measure 40, followed by a key signature change to two flats (Bb and Eb).

41

Measures 41-48 of a musical score. The key signature is two flats (Bb and Eb). The melody in the treble clef consists of half notes: G4, A4, B4, C5, B4, A4, G4, F#4. The bass line consists of half notes: E3, D3, C3, B2, A2, G2, F#2, E2. There are fermatas over measures 42, 44, and 46. A double bar line is at the end of measure 48, followed by a key signature change to two sharps (F# and C#).

49

Measures 49-56 of a musical score. The key signature is two sharps (F# and C#). The melody in the treble clef consists of half notes: G4, A4, B4, C5, B4, A4, G4, F#4. The bass line consists of half notes: E3, D3, C3, B2, A2, G2, F#2, E2. There are fermatas over measures 50, 52, and 54. A double bar line is at the end of measure 56, followed by a key signature change to two flats (Bb and Eb).

57

Measures 57-64 of a musical score. The key signature is two flats (Bb and Eb). The melody in the treble clef consists of half notes: G4, A4, B4, C5, B4, A4, G4, F#4. The bass line consists of half notes: E3, D3, C3, B2, A2, G2, F#2, E2. There are fermatas over measures 58, 60, and 62. A double bar line is at the end of measure 64.

NOTE NAMING TEST

DO NOT START THE TEST UNTIL MR. TURPIN SAYS YOU MAY BEGIN!!!

THE LENGTH OF THIS TEST WILL BE **5 MINUTES**

WHEN YOU ARE FINISHED, MR. TURPIN WILL COME AROUND AND COLLECT YOUR TEST

TEST RULES:

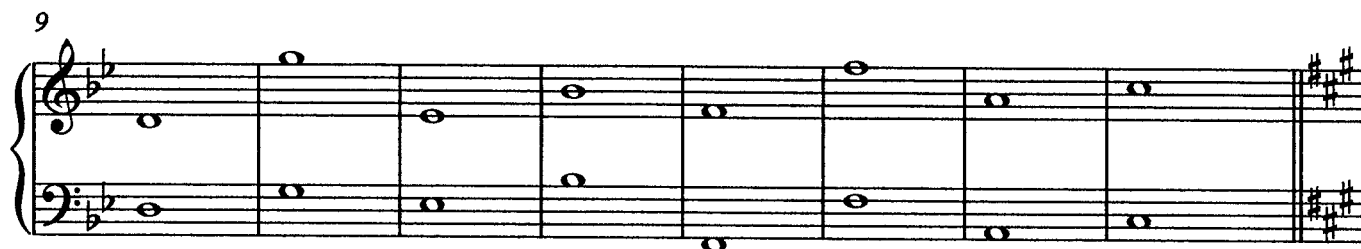
1. **NO TALKING!!!** ANY TALKING WILL RESULT IN RECEIVING A **MARK OF ZERO** ON THIS TEST.
2. IF YOU HAVE A QUESTION, RAISE YOUR HAND. MR. TURPIN WILL COME AROUND AND ANSWER ANY QUESTIONS YOU HAVE.
3. ABSOLUTELY NO USE OF CELL PHONES WHILE YOU ARE TAKING THE TEST. ONCE YOU ARE FINISHED, YOU MAY USE YOUR DIGITAL DEVICE, BUT ANY USE WHILE YOU ARE WRITING WILL RESULT IN A **MARK OF ZERO**.

GOOD LUCK ☺

Test

Name: _____









68

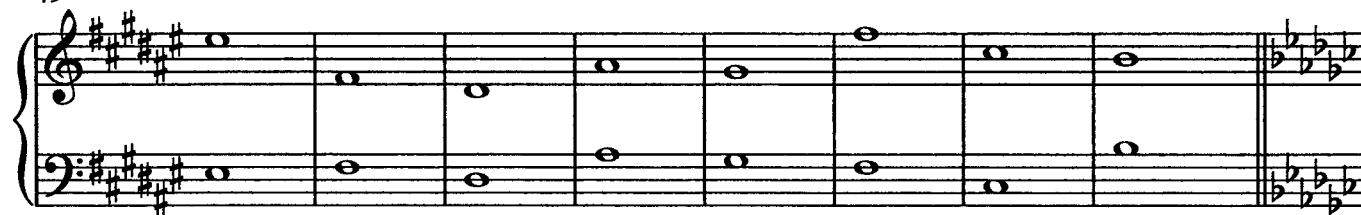
33



41



49



57

