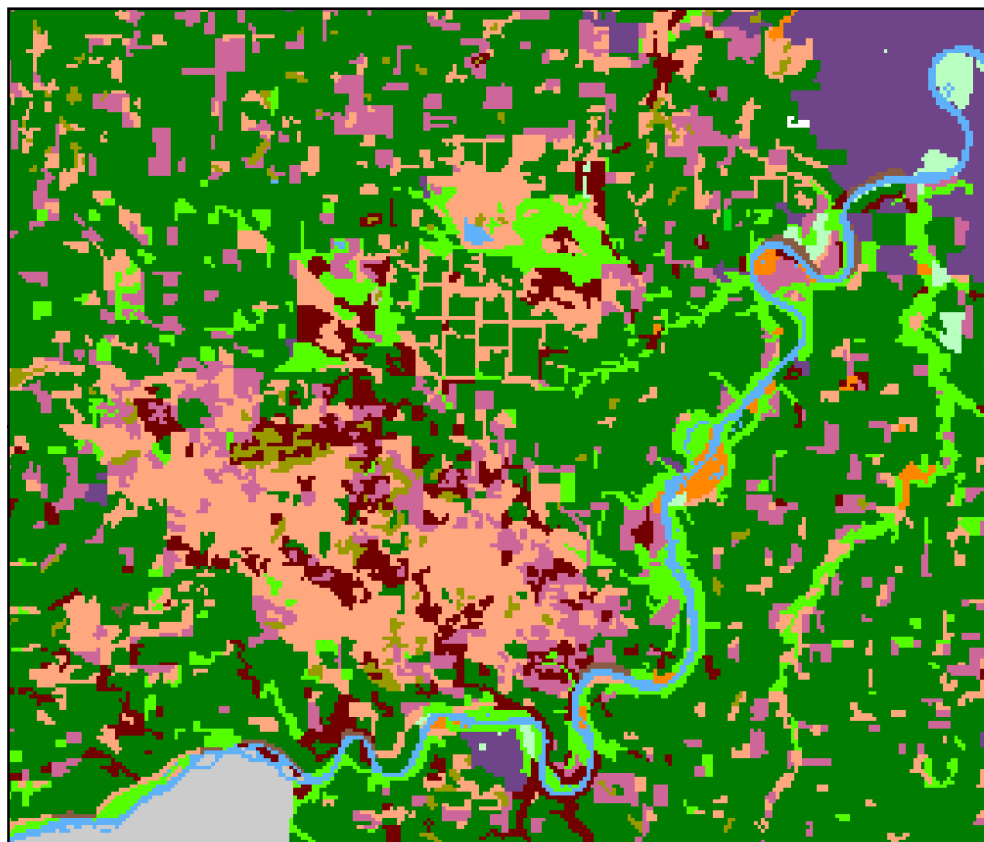


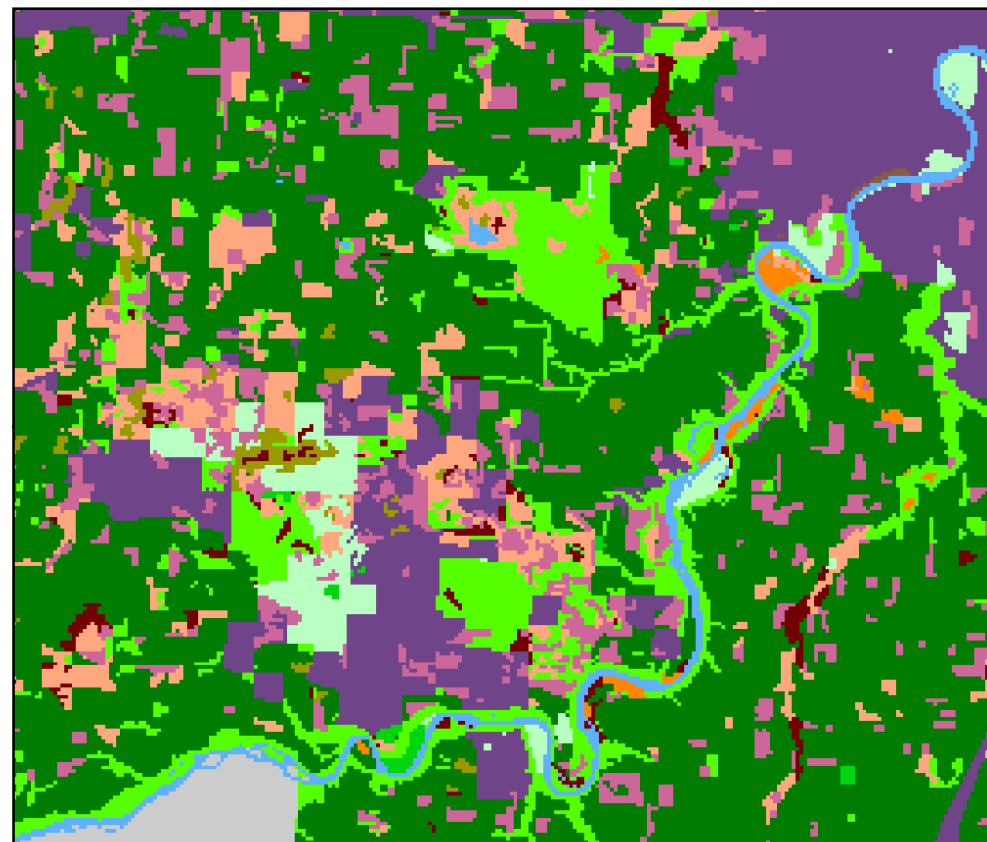
Land Use Changes in Edmonton, AB, 1966-1976

Alex Briault | UBC Geography | January 25, 2019

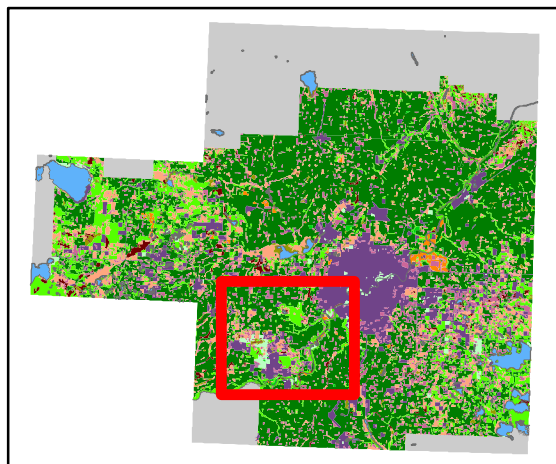
1966

















1976



0 25 50 100 KM



Landuse

	Cropland		Swamp marsh or bog
	Horticulture		Unimproved pasture and range land
	Improved pasture and forage crops		Unmapped areas
	Mines quarries sand and gravel pits		Unproductive landrock
	Non-productive woodland		Unproductive landsand
	Outdoor recreation		Urban built-up area
	Productive woodland		Water areas



Data Source: Geogratis
Geographic Coordinate System:
GCS_North_American_1927
Datum: NAD27
Projection: Universal Transverse Mercator (UTM)