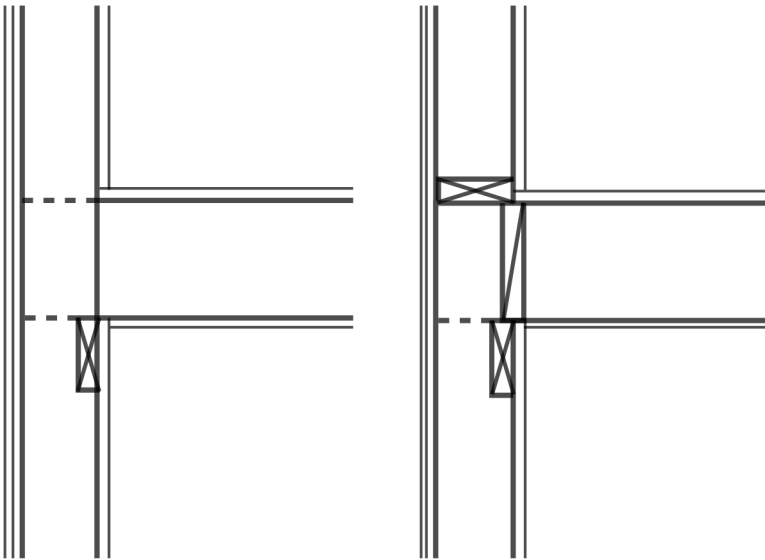
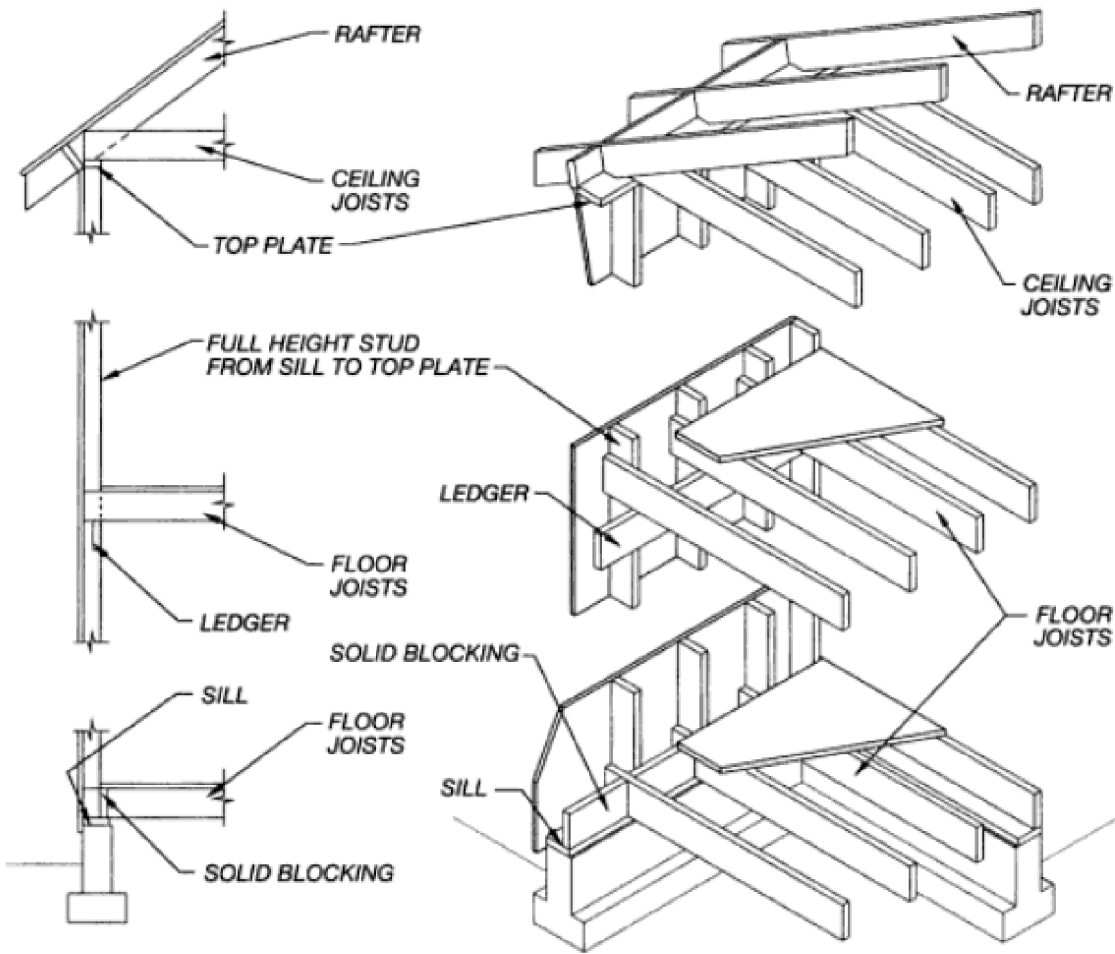
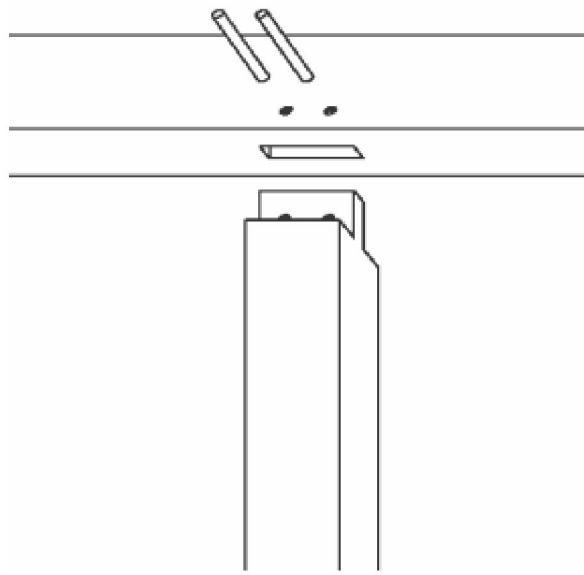
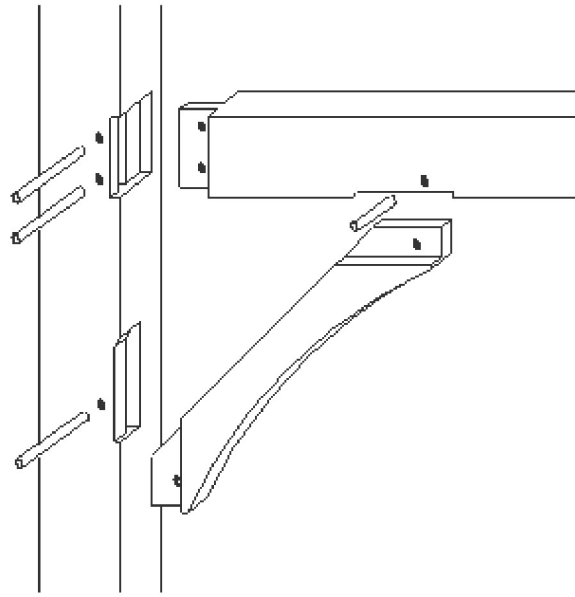


1) A BRIEF HISTORY ON THE PRESENCE OF TIMBER
CONSTRUCTION IN THE VANCOUVER REGION

.....

UNTIL 1930S - BALLOON FRAMING



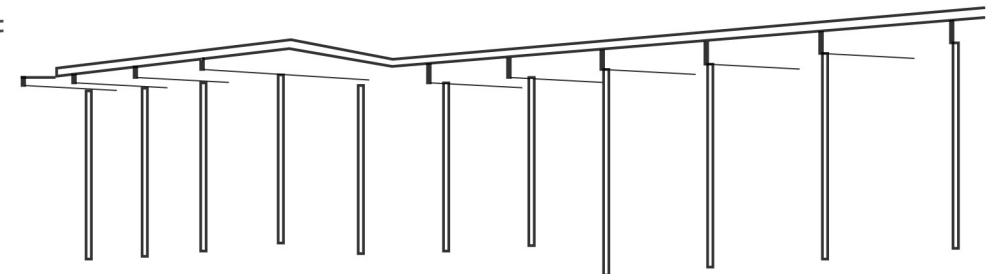


LATE 1940S > 1950s
HEAVY TIMBER



● Southworth Residence, Ron Thom (1957)

● Ned Pratt House, Ned Pratt (1951)

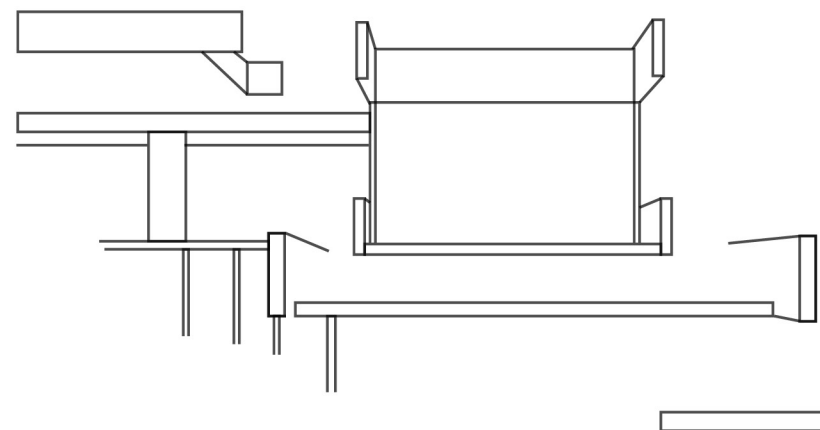


1960s > 1970s
FROM HEAVY TIMBER...



● Baldwin House, Arthur Erickson (1963)

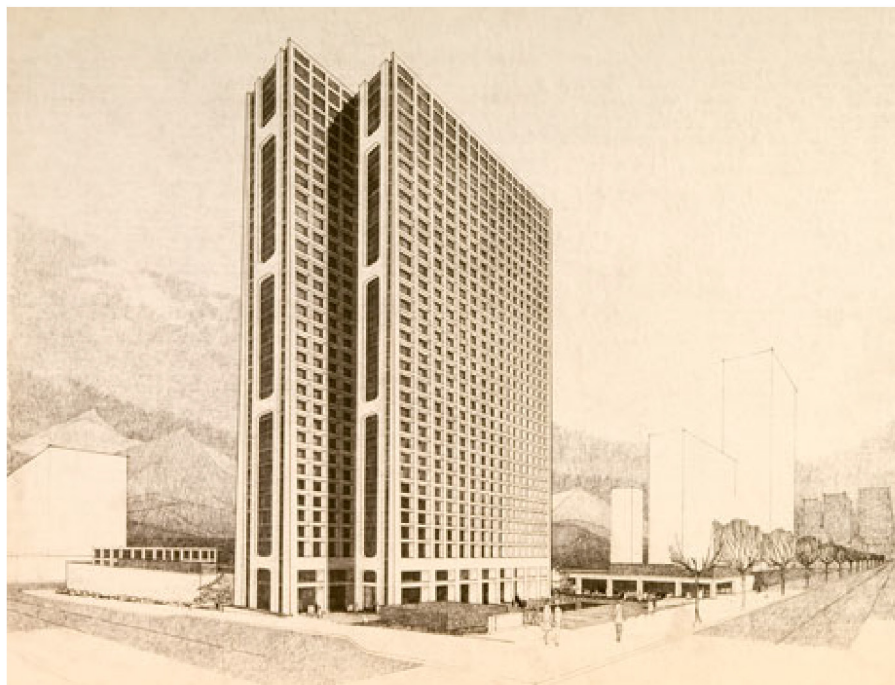
● Graham House, Arthur Erickson (1962)



1960s > 1970s
...TO CONCRETE

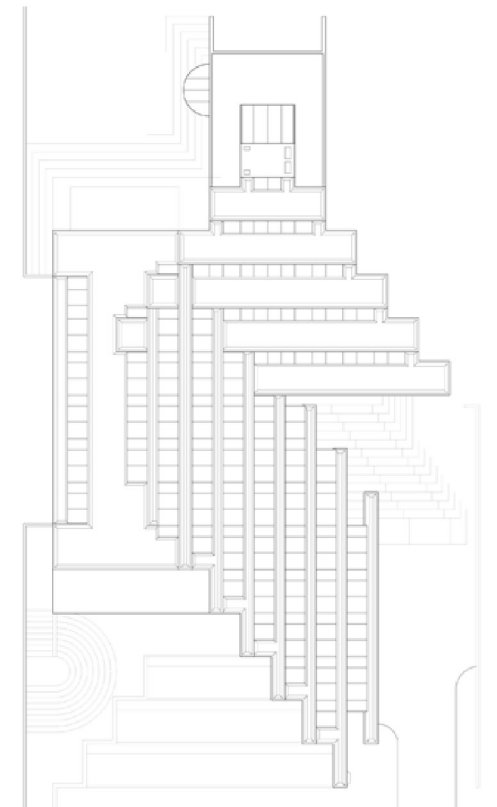
COMMERCIAL

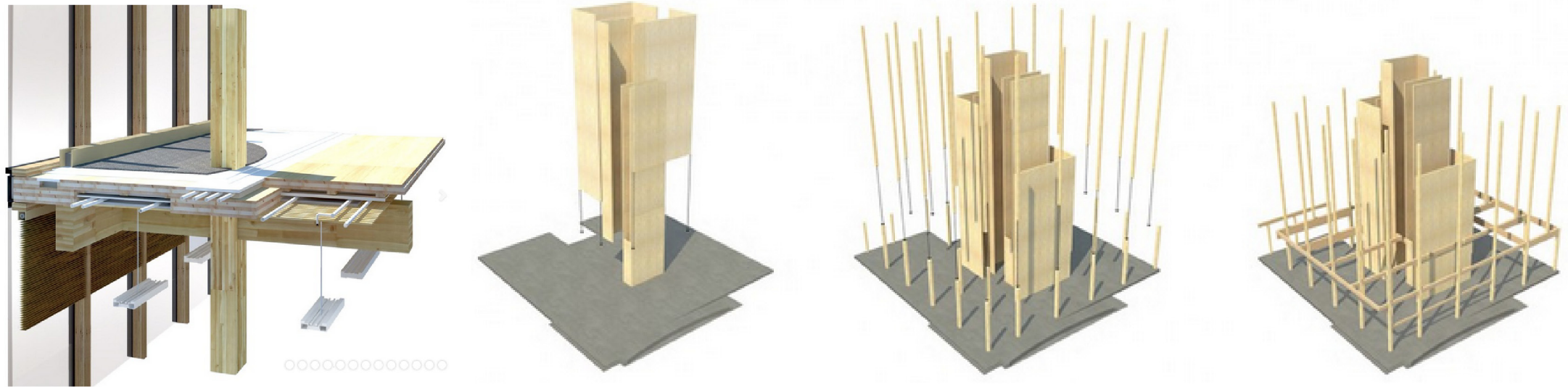
● MacMillan-Bloedel Building, Arthur Erickson (1969)



● Weaver Residence, Daniel Evan White (1976)

DOMESTIC





1970s > TODAY
GROWING INTEREST IN ENGINEERED WOOD

FOR PUBLIC SECTOR

● Wood Innovative Design Centre, Michael Green Architects (IN PROGRESS)

● Environmental Learning Centre, McFarland Marceau Architects Ltd. (2012)



FUTURE PROJECTION:

*WHAT CAN WE DO WITH WOOD NOW THAT WE CAN'T ACHIEVE WITH
OTHER MATERIALS?*

BUILDING LIGHTER / LESSER FOOTPRINT

LAYERING (SELECTIVELY)



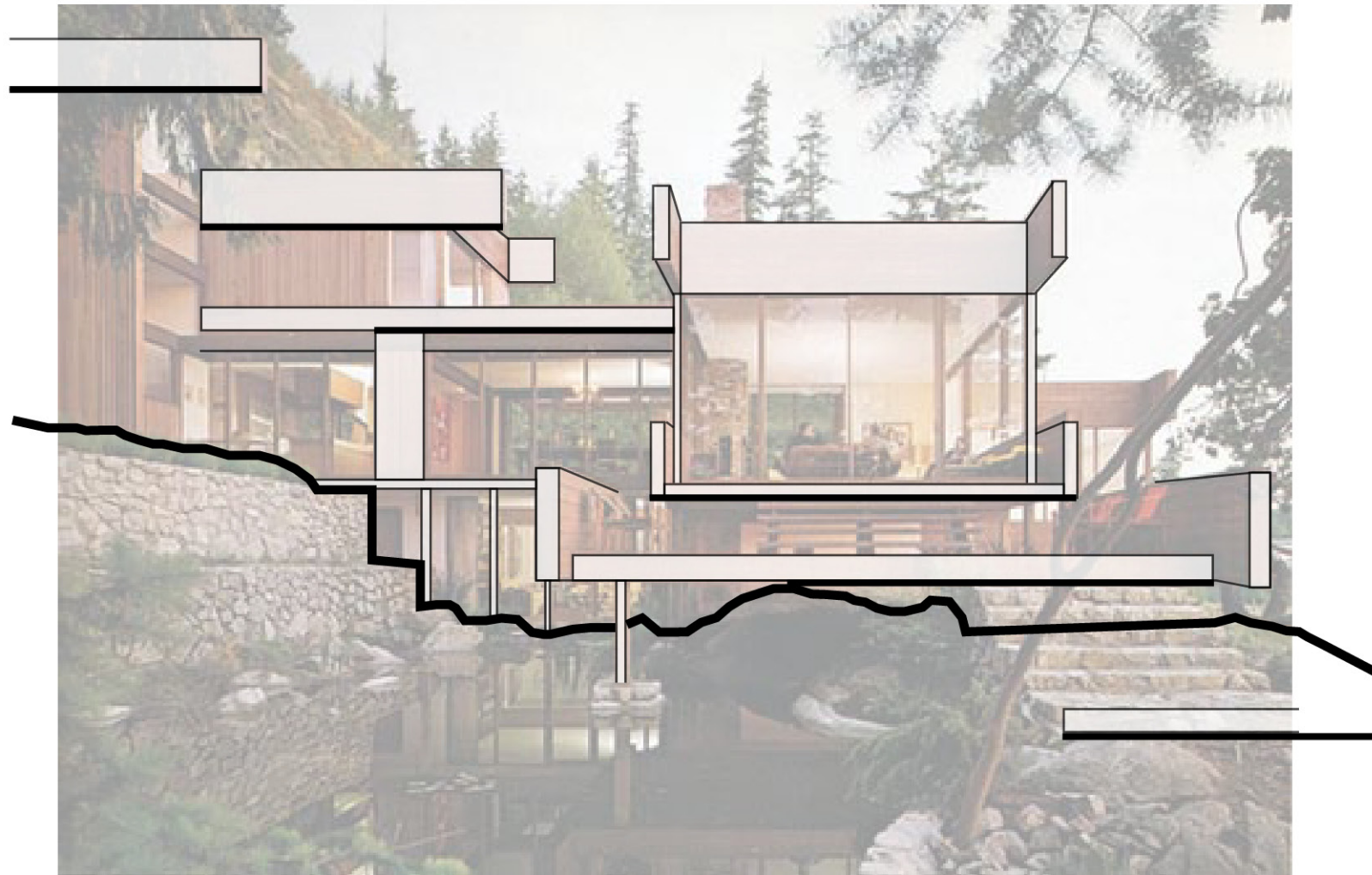
2) CONTEXTUALIZE - RELATING TO REGIONAL ECOSYSTEM / BUILT ENVIRONMENT

*CONTEXTUALIZE...
CREATING THE LANDSCAPE*

Seattle Art Museum, Olympic Sculpture Park, Seattle WA - Weiss Manfredi (2007)



CONTEXTUALIZE...
REACTING TO THE CONTOURS



Graham House, West Vancouver BC - Arthur Erickson (1962)



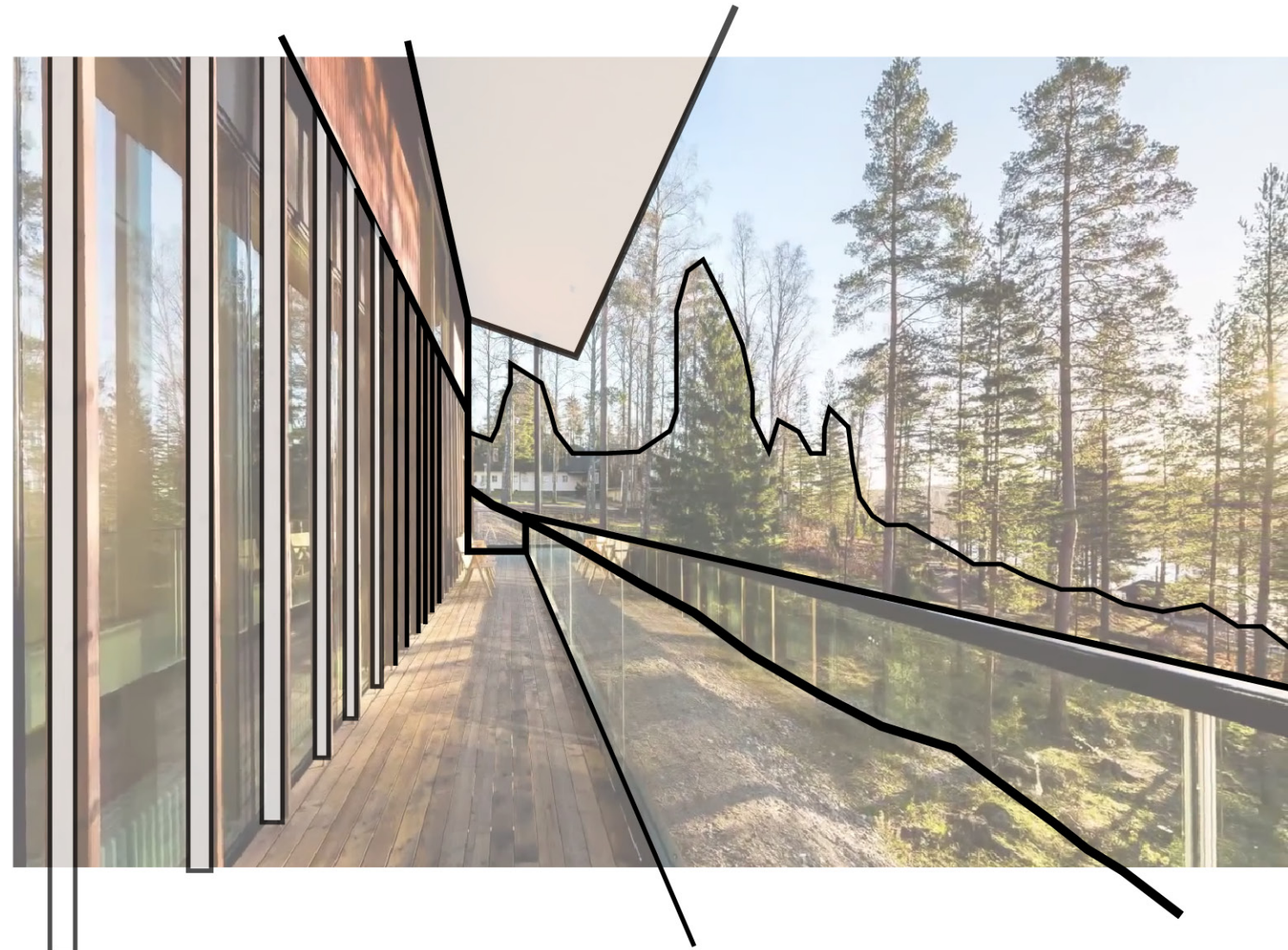
CONTEXTUALIZE...
WEDGED IN TO THE LANDSCAPE



The Pierre, San Jaun Islands WA - Olson Kundig (2008)



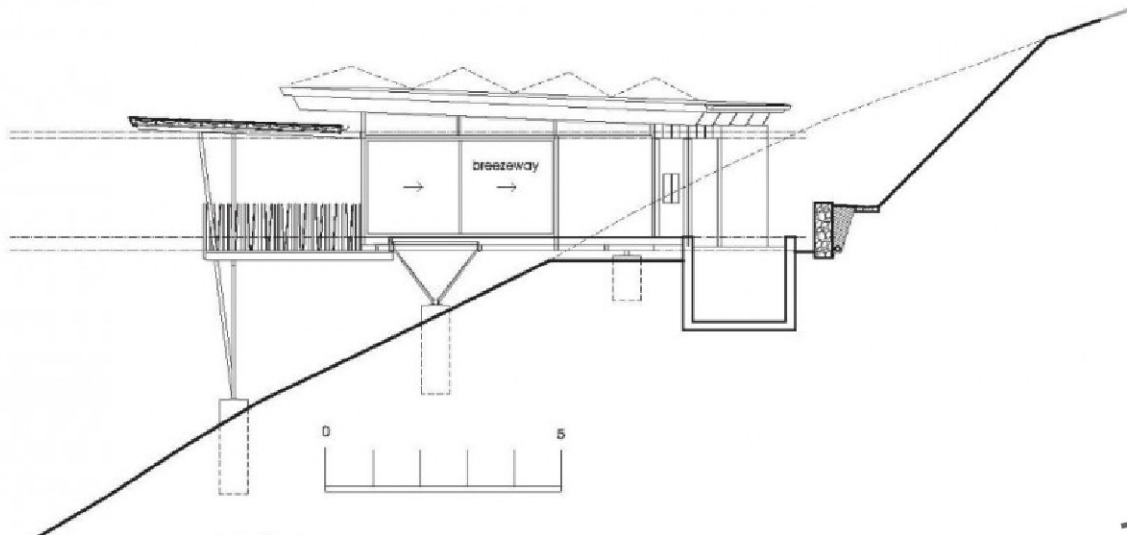
CONTEXTUALIZE...
ONE WITH THE ENVIRONMENT



Haltia, The Finnish Nature Centre, Espoo FINLAND - Rainer Mahlamäki (2013)



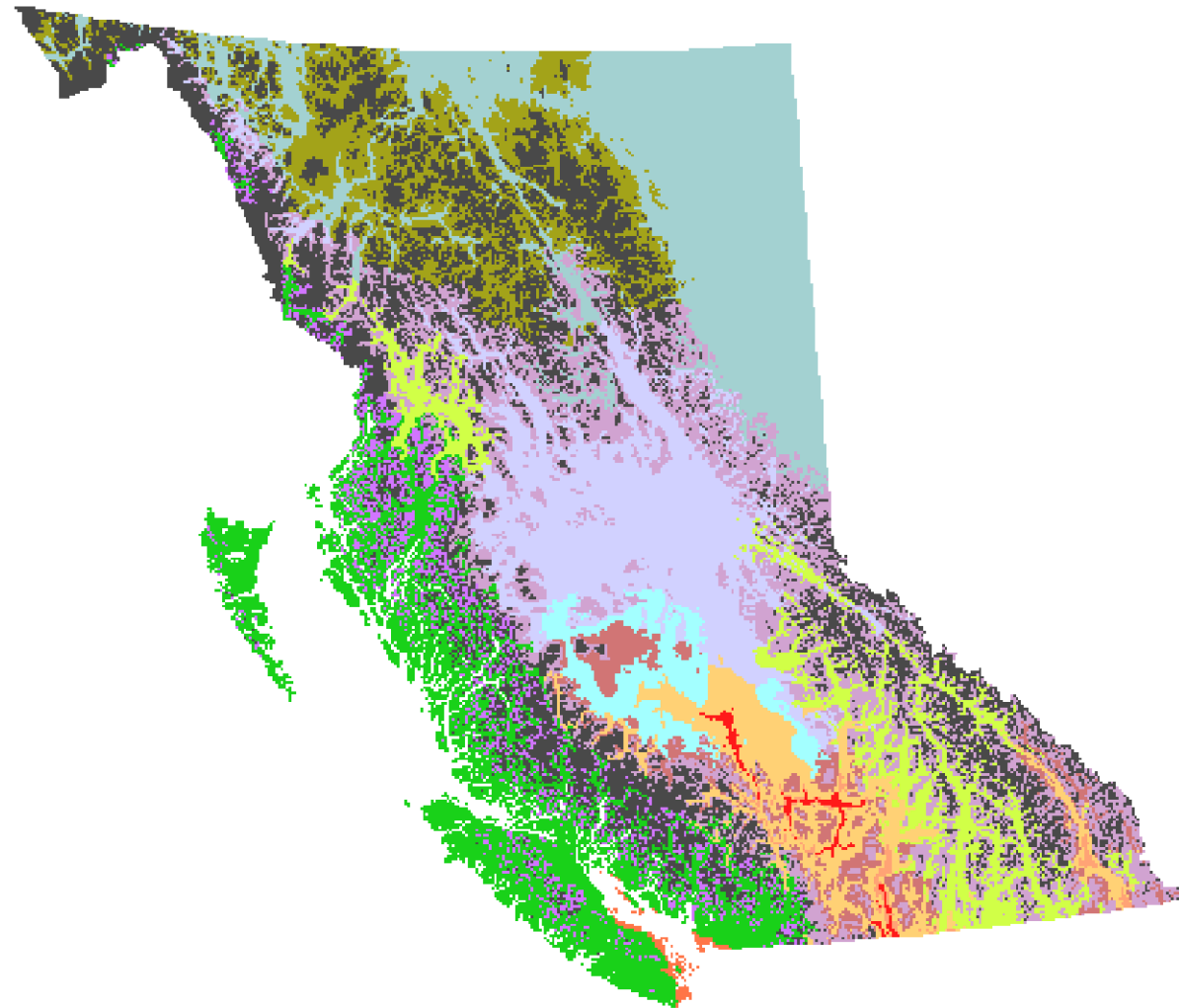
CONTEXTUALIZE...
SUSPENDED ABOVE

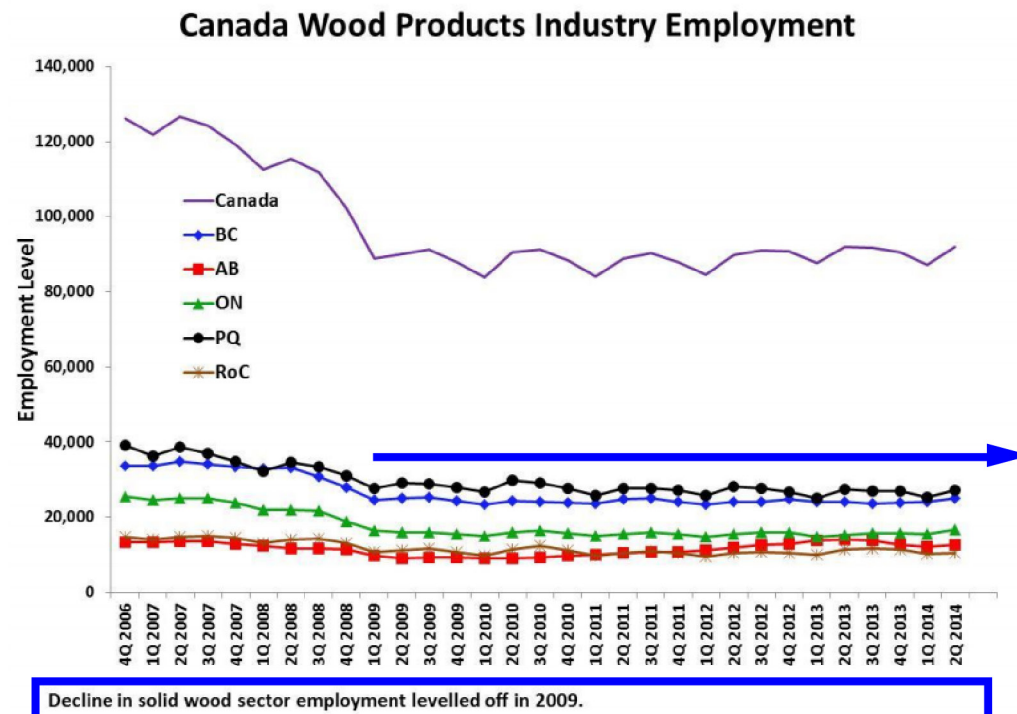


HP Treehouse, Cairns AUSTRALIA - mmp Architects (2012)

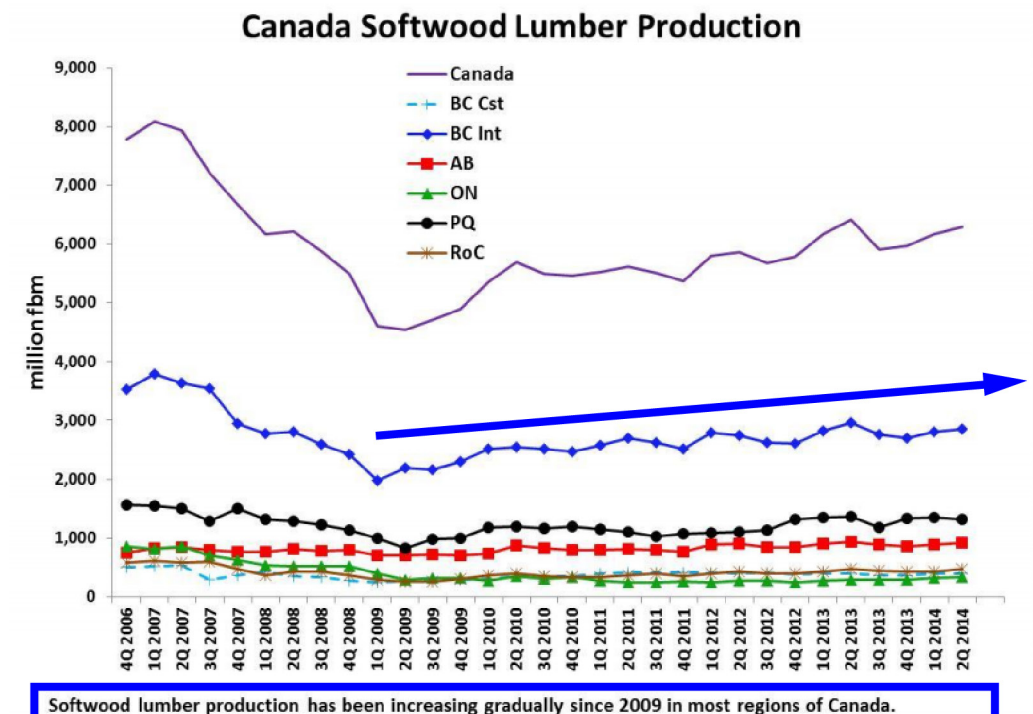


3) RESOURCING LOCALLY: CONSIDERATIONS IN TO WHAT IS READILY
ACCESSIBLE .. - - - - -
AND UNIQUE TO THE PARTICULAR REGION





BC Lumber
Trade Council



BC Lumber
Trade Council



(JUNE 2013)

% OF ALL WOOD PRODUCTS, TOTAL BC EXPORTS:

2009 = 16.4% // 2010 = 17.8% // 2011 = 17.5% // 2012 = 19.7%

% OF TOTAL BC EMPLOYMENT (forestry, wood products, pulp & paper):

2009 = 2.3% // 2010 = 2.4% // 2011 = 2.3% // 2012 = 2.4%

LOCAL SPECIES OF WOOD (BC)

SOFTWOOD



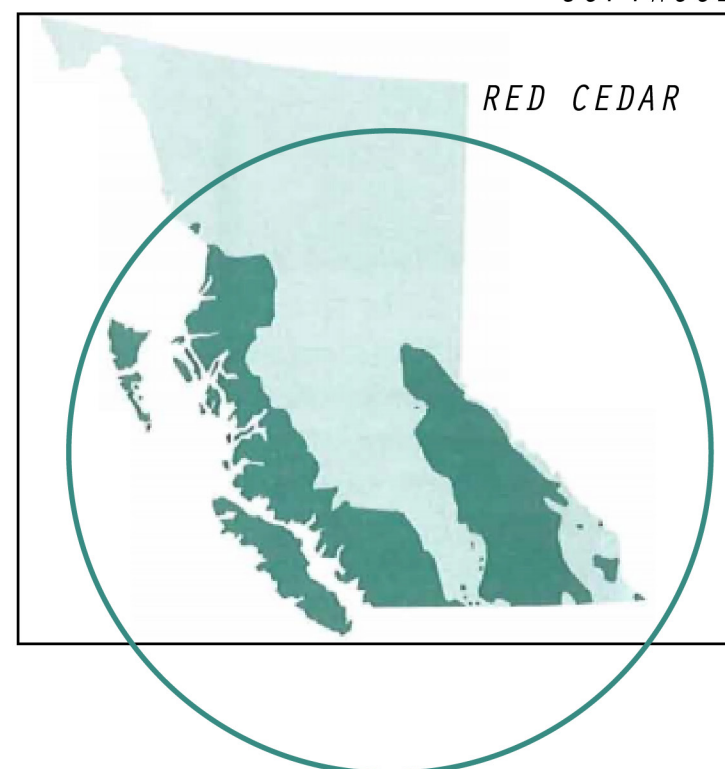
QUALITIES: DURABLE // LIGHT WEIGHT //
RESISTANCE TO DECAY
USES: EXTERIOR SIDING, INTERIOR PANELLING
(also furniture, decking and fencing)



QUALITIES: DENSE // HARD // DURABLE
USES: HEAVY DUTY CONSTRUCTION
(wharves, trestles, bridge parts, commercial buildings)



SOFTWOOD



QUALITIES: TALL STEM // FLEXIBLE + CONSISTENT
GRAIN
USES: PULP, SAWLOGS, VENEER LOGS, FIREWOOD
(also paneling)

HARDWOOD



FURTHER EXPLORATIONS WITH WOOD

*MAKING STRUCTURES LIGHTER >
THROUGH LAYERING*

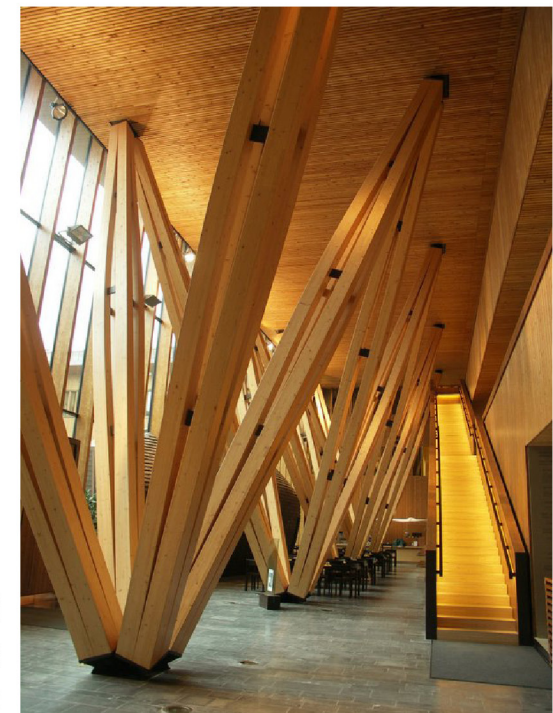
LAMINATING & DE-LAMINATING

*BENDING >
PUSHING THE BOUNDARIES OF WHAT YOU
CAN DO WITH WOOD*

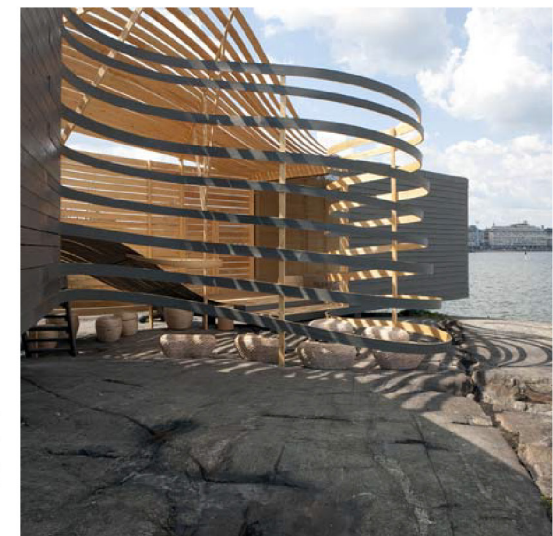
KUOKKALA CHURCH
by Lassila Hirvilammi



METLAN Finnish Forest
Research Institute
by Antti Matti Siikala



WISA Wooden Design Hotel
by Pieta-Linda Auttila



RESOURCES

Canadian Wood Council. “Environmental Learning Centre - North Vancouver Outdoor School”. 2013 Wood Design Awards - Project Fact Sheet. <http://www.wood-works.ca/wp-content/uploads/content/BC/WDA/Winner2012/FactSheets/elc.pdf>

Jefferis, Alan and David A. Madsen. Architectural Drafting and Design, 5th Edition. Clifton Park: Thompson Delmar Learning, 2005. 498-499.

IMAGES & PRECEDENT INFORMATION

“Finland_New_Forms_Kuokkala_church_Lassila_Hirvilammi_Architects”. <http://www.mfa.fi/pressrelease?lid=29005162>

“Haltia - The Finnish Nature Centre / Architecture”. <http://www.haltia.com/haltia-the-finnish-nature-centre/architecture/>

“HP Treehouse / mmp Architects“. Arch Daily. <http://www.archdaily.com/240006/hp-tree-house-mmp-architects/>

“Kuokkala Church / Lassila Hirvilammi”. Arch Daily, 12 August 2010. <http://www.archdaily.com/72755/kuokkala-church-lassila-hirvilamm/>

“Metla Finnish Forest Research Institute”. Phaidon Atlas. <http://phaidonatlas.com/building/metla-finnish-forest-research-institute/236>

“Modernism in Vancouver Part Two: West Coast Modernism”. Vancouver Heritage Foundation, 16 September 2014. <http://spacing.ca/vancouver/2014/09/16/modernism-vancouver-part-two-west-coast-modernism/>

“MacMillan Bloedel Building”. Canada’s Historic Places, 13 February 2008. <http://www.historicplaces.ca/en/rep-reg/place-lieu.aspx?id=8781>

“Ned Pratt, Vancouver Architect”. 30 November 2010. <http://blog.ounodesign.com/2010/11/30/ned-pratt/>

“Seattle Art Museum: Olympic Sculpture Park”. <http://www.weissmanfredi.com/project/seattle-art-museum-olympic-sculpture-park>

“The Four Footprints”. <http://makewealthhistory.org/2014/04/02/the-four-footprints/>

“The Pierre”. <http://www.olsonkundigarchitects.com/Projects/1348/The-Pierre>

“The Pierre by Olson Kundig Architects”. <http://mocoloco.com/fresh2/2011/03/03/the-pierre-by-olson-kundig-architect.php>

“Weaver Residence”. The Architecture of Daniel Evan White, 21 September 2012. <http://buildingcompositions.tumblr.com/>

“WISA Wooden Design Hotel”. Dezeen, 06 August 2009. <http://www.dezeen.com/2009/08/06/wisa-wooden-design-hotel-by-pieta-linda-auttila/>

“Wood Innovation Design Centre”. MGA. <http://mg-architecture.ca/portfolio/widc/>

YouTube. “The Warmth of Wood: A Natural Approach to Learning”. North Shore Credit Union: Environmental Learning Centre. <http://www.naturallywood.com/emerging-trends/wood-first>