



## Issues we'll talk about

- Resource allocation
- Court cases
- Education
- Health Care
- Sovereignty

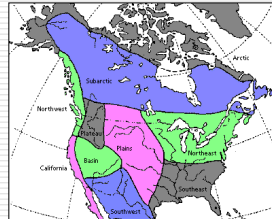


## More issues we'll talk about

- Cultural Tourism
- Eco-Tourism
- Museums & appropriation

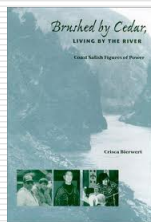


## Anthropological Concepts and Approaches



- What is a *Culture Area*?
  - “A geographically discrete region containing several cultures that share specific traits.”

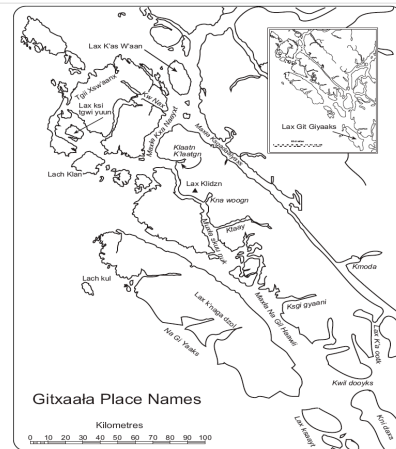
## What is Ethnography?



**An interpretive description of some aspect of a society or of a society as an integrated whole. Often it is written as a description of the society at a particular time period called the ‘ethnographic present.’**



## Gitxaala and Ts'msyen



### □ Social Organization

- social class:
- Clan/tribe: *Gispuwada, Laskeek, Laxgibu, Ganhada*
- *Walp* -housegroup membership
- village

## Social Organization

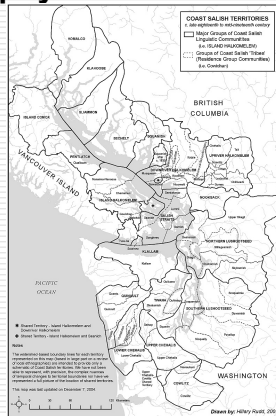
### □ Social Rank -Position

- Sm'gyigyet (sm'ooygit)
- Lik'agyet
- Sigyidm hana'a
- K'abawaalksik



## Coast Salish

### Geography



### Diversity

- Anthropologically – northern, central, and south/southwestern Salish.
- Linguistically -23 languages; 16 on the coast.
- International border – US/Canada

## Coast Salish Social Organization

### Chiefly Encounters

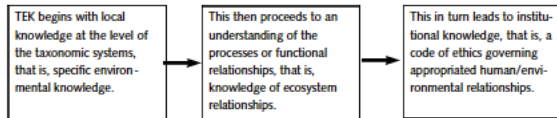


### Kinship and Politics

- Kinship reckoned bilaterally.
- Houses or households comprised of a core families related through either men or women.
- Leadership - si'em (chiefly classes).

## Definitions

### Traditional Ecological Knowledge



### Definitions and Comparisons

Refer to handout on TEK

## History



- When does history begin?
  - What is history?
    - written vs oral.
  - *Adawx* – ‘true telling,’ history, teaching narrative. ‘Official’ historical account.
    - Ayaawk, adaawx, googwith yansk, meelsg.

## Newcomers, new economies

---



- **Spanish, British, American: Marine Commercial Ventures**
  - Camano,
  - Colnett,
  - Bishop
- **Gitxaala and Ts'msyen**
  - Seax,
  - Ts'ibassa,
  - Legaix

## Capitalist RoP – key terms

---

- Social relations of production
  - Means of production
-



## Kitsumkalum -a case study.



- Key questions:
  - How did ownership and control shift from Kitsumkalum to industrialists?
  - How was Kitsumkalum labour diverted into the capitalist economy?

## The White Problem

- “As Europeans settled among Aboriginal People and began to work alongside of them, some were willing to admit that ‘Indians’ worked ‘better than many whitemen.’ But there were those in prominent positions” . . . [who wanted] BC “to be a ‘White Man’s Province.’” (Lutz 2008:235)



Courtesy of BC Archives collections - Call Number: R-00101  
 Web: [www.bcaregives.gov.bc.ca](http://www.bcaregives.gov.bc.ca) Email: [access@www.bcaregives.gov.bc.ca](mailto:access@www.bcaregives.gov.bc.ca)  
 (C) - Provided for Research Purposes Only - Other Use Requires Permission



Title: Legislative Assembly of B. C., Victoria.

Recessed From West on Tue Sep 23 07:11:50 2008

## Stone Traps and Ecologically Appropriate Gear

---

■ Throughout Gitxaala Territory one can find stone traps located in and near practically every salmon bearing creek.

■ Traps are located in or near the mouth of the target creek. Traps employ tidal drift and local currents to capture fish.

■ Salmon gather at the mouth of their birth river or stream until they are ready to spawn.



■ On the ebbing tide, salmon become trapped in the belly of the stone trap.

■ In the trap studied, a back eddy forms that sweeps the salmon into the trap area.

■ Fishers constantly monitor the actions of the salmon and, where necessary, attempt to hold the fish in place.



## Agenda: Decolonizing Research

---

- Research On;
  - Research With;
  - Research By Indigenous Peoples.
  
  - Enacting Sovereignty (if time permits)
-

## Research On (and with)

---

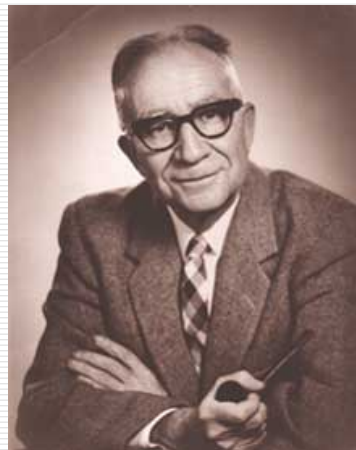
- ❑ Beynon –researcher 1915-1954.
- ❑ Part of project of research on.
- ❑ The primary source behind most early/mid 20<sup>th</sup> century anthropology on the north coast.
- ❑ A hereditary leader engaged in the *realpolitik* of the time.



## Research On

---

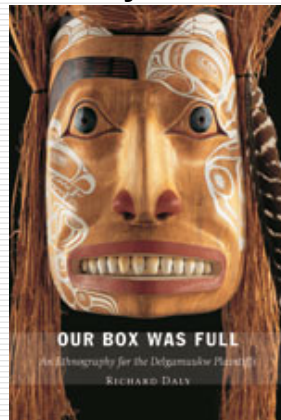
- ❑ T.F. McIlwraith –Nuxaulk (Bella Coola)
- ❑ “His aim has been to present an integrated picture of Bella Coola nonmaterial culture previous to white contact” H.G. Barnett 1949.



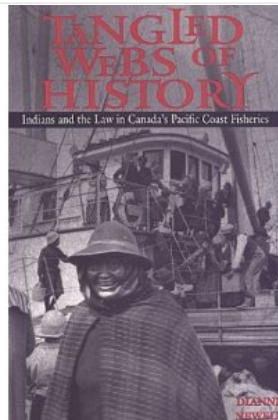
## Research With

---

**Richard Daly**



**Dianne Newell**



## Definitions of Key Terms and Concepts

---

- Colonialism/De-colonization
  - Sovereignty and Political Control
  - Resistance
-

## Colonialism / Decolonization

---

- Process
    - Previously discussed in class: involves taking control over space, economy, political system, and culture
  - Politics
    - Leads to a variety of dominant society politics (colonial folklore, theories of racial/cultural superiority) and subaltern politics (direct action, legal challenges, disruption)
- 

## Treaties: General Issues

---

- Legal Necessity
  - Compensation for Infringement
  - Interim Measures
  - The question of 'certainty.'
-

## If there is 1 thing you leave with ...

---

- Overview of 3 basic social organizations
  - Ambivalence of contact – within and against – ref to the economic transition to capitalism, the legal structure that facilitated, and the local knowledge upon which it was based
  - Personal experiences of ‘becoming British Columbia’
- 

## Questions

---

