

Archaeology in Laxyuup Gitxaala

Connecting with Community through
Teaching

Charles R Menzies
Gitxaala Environmental Monitoring / UBC

Gitxaala

-an ancient indigenous people



- ❑ Original north coast people
- ❑ Ongoing rights and title struggle
- ❑ Resources of the past become resources in the struggle

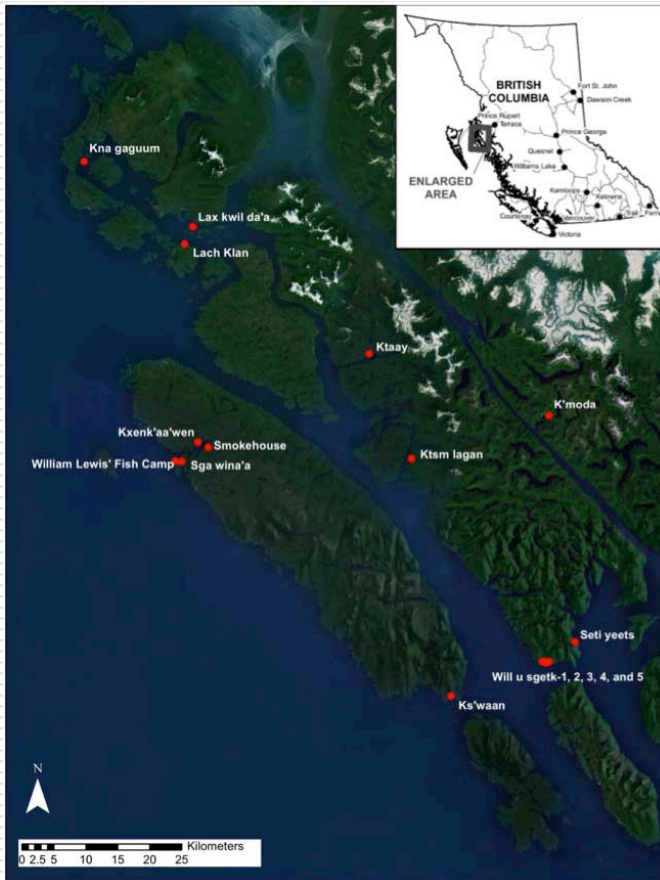
Enacting Sovereignty



□ OBJECTIVE

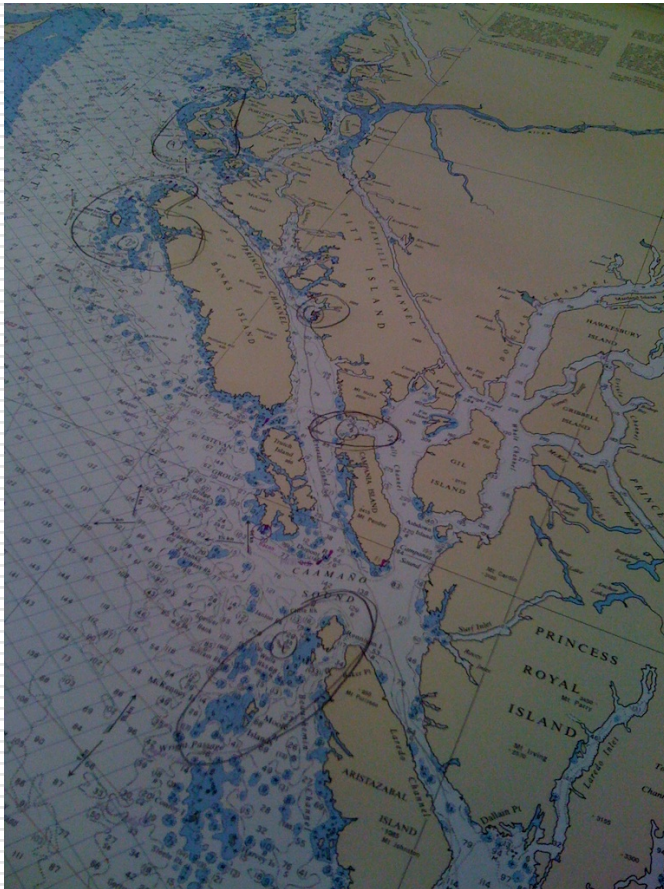
- To create robust archaeological reconstructions directed by Gitxaala intellectual framework.
- To connect with community through teaching and learning together.

Context



- Location of research activities
 - So-called great bear rainforest on BC's north coast
- Research context
 - Massive industrial developments, inter-nation conflicts AND collaboration.
- Previous projects
 - Duff (1938), Simonson (1972), consulting CMT studies 1990s-present)

Documenting the laxyuup

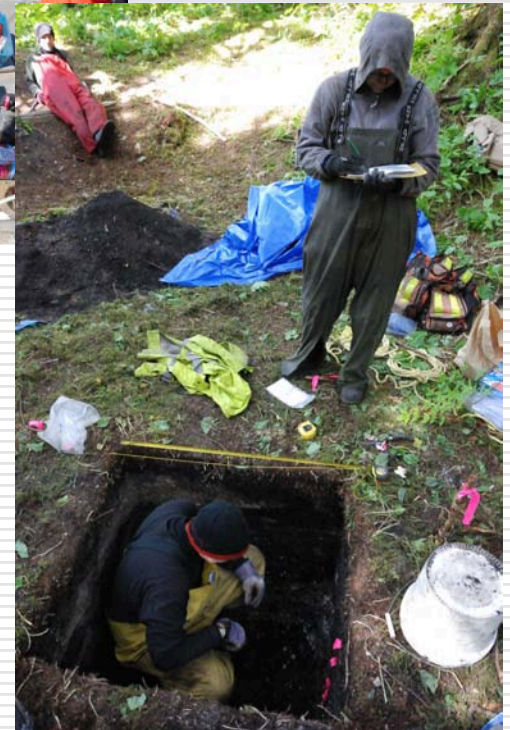


- Ecological knowledge
 - Participant observation, interviews, site visits since 1998
- Intertidal survey
 - Filming, mapping, and recording since 2001
- Village Survey
 - Exploratory survey August 2009, continuing 2010-2014.
- Alpine Laxyuup Trail
 - Walking the territory starting 2014

Teaching and Learning in Place



Our approach focuses on reciprocal learning.



Teaching and Learning in Place



Teaching and learning includes demonstrations with students from Lach Klan School

Teaching and Learning in Place



Transferring and enhancing technical knowledge in community.

What's Next?

- ❑ Collaborative trans-disciplinary project
 - Oral history
 - Landscape archeology
 - Gitxaala perspective will inform the interpretive analysis and set the research objectives
- ❑ Build indigenous sovereignty through research and political/economic control