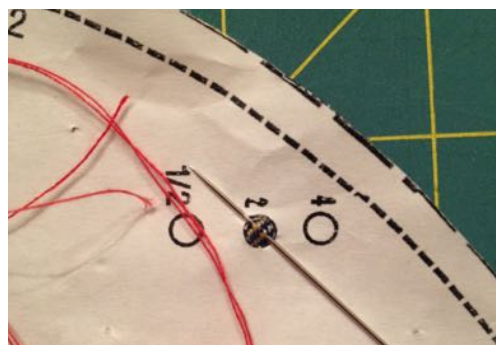


A 12- Step process to set-in sleeves.

Based on Shirt A and Shirt B from New Look Pattern's Children's Shirts.



Step 1: Pin the pattern piece to the fabric, (if you have a plaid fabric, be sure to match up the plaid pattern with your body pattern.)

Step 2: Cut out the pattern piece through both layers of fabric. Cut out notches and mark round markings with a contrast thread. Clip thread between layers.



Step 3: Pin together the sides of the sleeve. Match plaid if applicable. Sew sleeve side seam together at **5/8" (1.5cm)**

Step 4: Press open sleeve seam. Pink, serge, or zig-zag the edges of the seam allowance.



Shirt A: When sewing hem, leave **1" gap** for elastic casing

Step 5: Fold the raw edge of the sleeve hem up $\frac{1}{4}$ ". Press crisply (less-experienced seamstress' should sew down the $\frac{1}{4}$ " fold at this time)

Step 6: Fold up hem again **1"**. Press crisply.

Step 7: Fold the sleeve inside out. Peek into the sleeve so you can see the wrong side (where you can see the hem folded up). Sew down the hem close to the edge of the top of the hem. (About $\frac{1}{8}$ " from the edge)

Step 8: The hem is now sewn in a full circle. Your next step is to *edge-stitch* the sleeve along the top. Make two lines of **BASTING** at $\frac{1}{2}$ " and $\frac{1}{4}$ " from the edge

Step 9: Slightly gather the edge-stitching between the notches. This will help you **EASE** the sleeve into the arm-hole.





Shirt A: Insert elastic into casing, overlap 1" and sew elastic together.



Step 10: For **Shirt A**, gather basting more than Shirt B, these will be permanent **gathers** in the sleeve; instead of just ease in the sleeve



Step 11: Place sleeve inside shirt armhole.

- Match up markings and seams and pin. **Ease** the rest of the sleeve into the armhole by slowly stretching the gathering basting.
- Pin the sleeve into the armhole and ensure the ease is distributed throughout the armhole.
- For **Shirt A**, carefully distribute the gathers between the notches and ensure there is no puckering in the armhole

Step 12: Stich the armhole at $5/8$ ". Stich from the inside of the sleeve. Smooth fabric as you stich to ensure the ease is evenly distributed. For **Shirt A**, stich armhole again at $3/8$ "

Done!

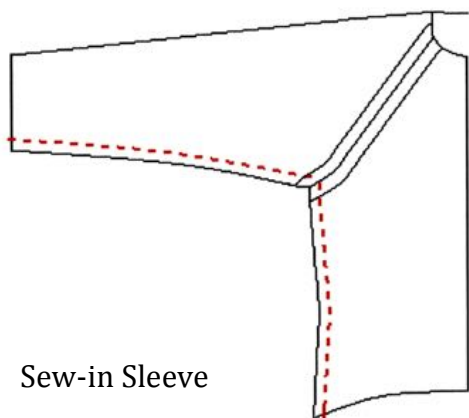
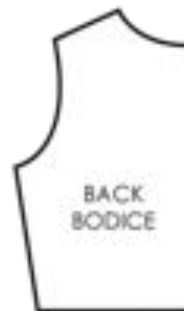
Sleeves!

Ms. Barber

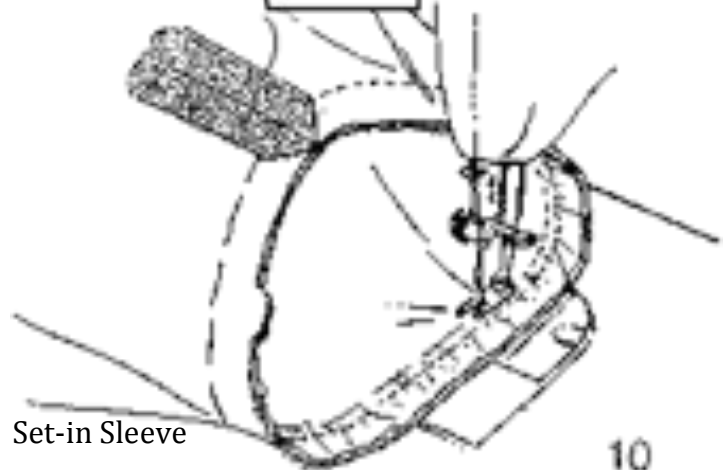


SIMPLIFIED SET IN SLEEVE PATTERN

EASE IS USED IN THE TOP OF THE SLEEVE HEAD TO CURVE OVER THE SHOULDER AS YOU SEW THE SLEEVE



Sew-in Sleeve



Set-in Sleeve