

FALSE CREEK URBAN MARINE PARK



WHAT'S HAPPENING WITH FALSE CREEK?

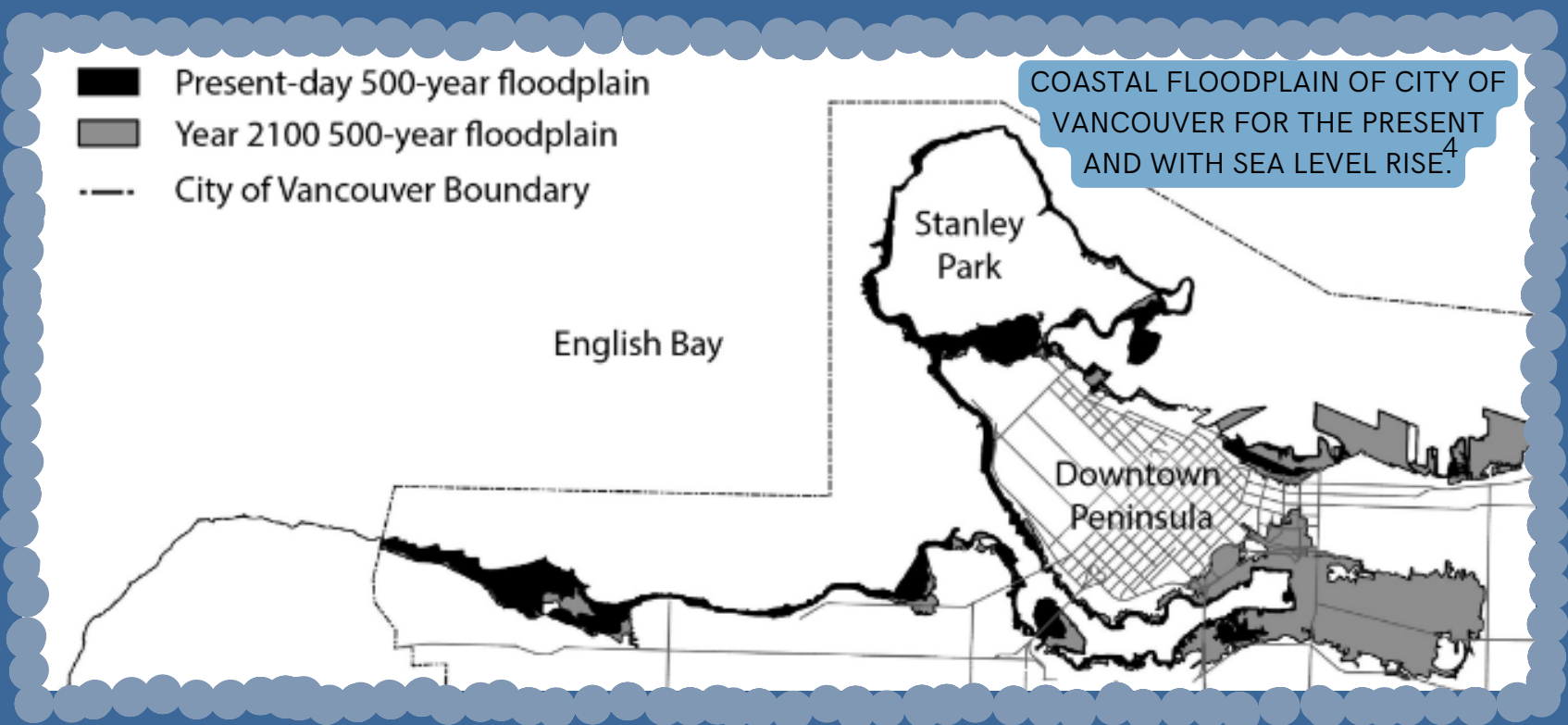
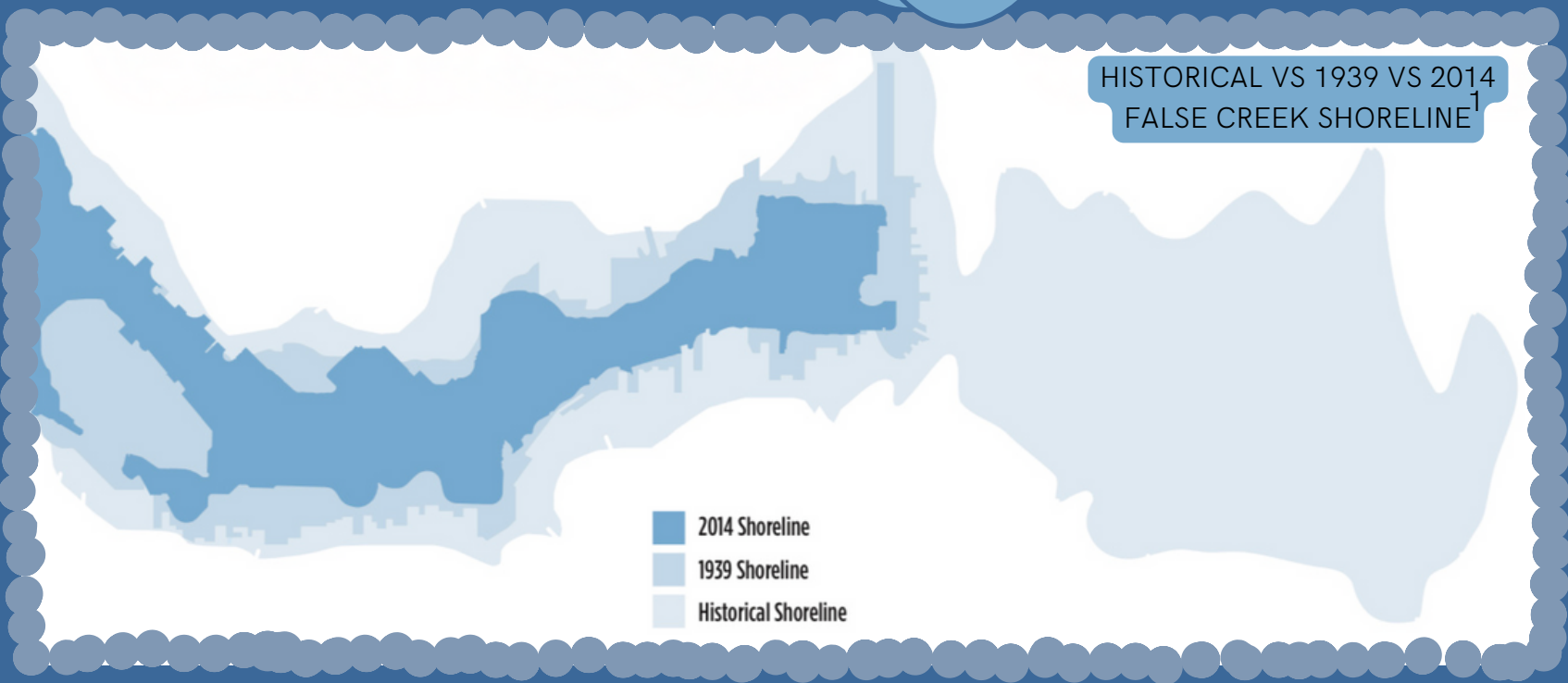
False Creek used to be 5 times its present day size and was a large tidal mudflat or slough, extending as far as Clark Drive. Previously rich with biodiversity, False Creek was home to eelgrass and clam beds, numerous songbirds, and was the site of the Sen'ákw ancestral village, on Musqueam, Squamish and Tsleil-Waututh land. Due to colonization, First Nations have since been forcibly displaced from False Creek. In 1913, the Canadian Pacific Railway Company filled in False Creek to make room for industrial land including sawmills, shipbuildings and slaughterhouses. In 1968, Vancouver City Council removed False Creek's industrial designation, and it has since been promoted as a lively and sustainable residential area.

While good things are happening here, such as the Musqueam developments at Sen'ákw, it is still important to consider how to create a more sustainable and ecologically friendly space for residents in False Creek. In preparation for sea level rise and larger floods due to climate change, we have to begin adapting False Creek for ecological and social resiliency. Introducing: Urban Marine Parks.

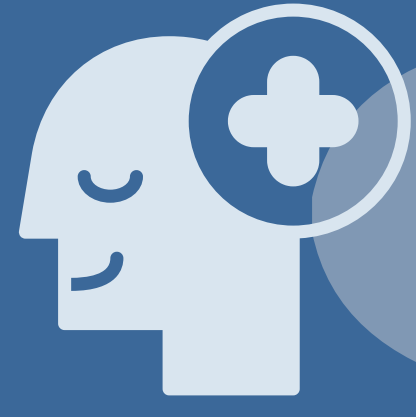
FUTURE CONSEQUENCES
 WE CAN KEEP RAISING THE SEAWALL, BUT RISING SEA LEVELS THEREATEN MAJOR FLOODING EVENTS. IF WE DO NOTHING, FALSE CREEK WILL RETURN TO A TIDAL SLOUGH.
 BEGIN REWILDING FALSE CREEK NOW!

WHAT IS AN URBAN MARINE PARK?

- A designated urban coastal space, established in order to encourage appreciation and connection to the city seascape, while also improving city community health, wellbeing and heritage.²
- Addresses interconnected global sustainable development targets by using a spatial nexus framework³



BENEFITS



- Health-Care cost savings⁵
- Exposure to outdoor blue spaces increases mental health and well-being⁶
- Leads to lower psychological distress in Urban settings⁷



Sustainable Ecotourism through maritime Indigenous Heritage and Stewardship Culture⁸



- Promotes Ethical Spaces for Indigenous people⁹
- Promotes Social and Cultural Contact¹⁰

RECOMMENDATIONS

False Creek Friends' actionable To- Do list includes:¹ Other Recommendations²

- Collect Physical Science
- Conduct Social Science
- Engaging First Nation, Indigenous, and pluralistic ways of knowing
- Develop design strategy (brand, storytelling, communications)
- Supporting Indigenous Governance and Co-Governance
- Public Perception Research²
- Rewilding Projects¹²
 - Watershed scale rewilding promotes critical ecosystem function restoration
 - Self-sustaining wild area with minimal intervention
 - Habitat Island is a great example of successful rewilding in False Creek

CONTACTS

SCOTT JENSEN

VANCOUVER PARK BOARD CHAIR COMMISSIONER

SCOTT.JENSEN@VANCOUVER.CA

HON. STEVEN GUILBEAULT

MINISTER OF ENVIRONMENT AND CLIMATE CHANGE

MAYOR KEN SIM

MAYOR OF VANCOUVER

KEN.SIM@VANCOUVER.CA

Creator: Reuben King
reubenlrk@gmail.com

REFERENCES

1. HATCHER, C., & HULBERT, J. (2016). HISTORY OF NORTHEAST FALSE CREEK. CITY OF VANCOUVER. [HTTPS://CITYSTUDIOVANCOUVER.COM/PROJECTS/HISTORY-OF-NORTHEAST-FALSE-CREEK/](https://citystudiovancouver.com/projects/history-of-northeast-false-creek/)
2. PITTMAN, S. J., RODWELL, L. D., SHELLOCK, R. J., WILLIAMS, M., ATTRILL, M. J., BEDFORD, J., CURRY, K., FLETCHER, S., GALL, S. C., LOWTHER, J., MCQUATTERS-GOLLOP, A., MOSELEY, K. L., & REES, S. E. (2019). MARINE PARKS FOR COASTAL CITIES: A CONCEPT FOR ENHANCED COMMUNITY WELL-BEING, PROSPERITY AND SUSTAINABLE CITY LIVING. *MARINE POLICY*, 103(MAY), 160-171. [HTTPS://DOI.ORG/10.1016/J.MARPOL.2019.02.012](https://doi.org/10.1016/j.marpol.2019.02.012).
3. LIU, J., HULL, V., CHARLES, H., GODFRAY, J., TILMAN, D., GLEICK, P., HOFF, H., PAHL-WOSTL, C., XU, Z., C, M. G., SUN, J., & LI, S. (2018). NEXUS APPROACHES TO GLOBAL SUSTAINABLE DEVELOPMENT. *NATURE SUSTAINABILITY*, 1, 466-476. [HTTPS://DOI.ORG/10.1038/S41893-018-0135-8](https://doi.org/10.1038/s41893-018-0135-8)
4. LYLE, T. S., & MILLS, T. (2015). ASSESSING COASTAL FLOOD RISK IN A CHANGING CLIMATE FOR THE CITY OF VANCOUVER. *CANADIAN WATER RESOURCES JOURNAL*, 41(1-2), 343-352.
5. PAPATHANASOPOULOU, E., WHITE, M. P., HATTAM, C., LANNIN, A., HARVEY, A., & SPENCER, A. (2016). VALUING THE HEALTH BENEFITS OF PHYSICAL ACTIVITIES IN THE MARINE ENVIRONMENT AND THEIR IMPORTANCE FOR MARINE SPATIAL PLANNING. *MARINE POLICY*, 63, 144-152. [HTTPS://DOI.ORG/10.1016/J.MARPOL.2015.10.009](https://doi.org/10.1016/j.marpol.2015.10.009)
6. GASCON, M., ZIJLEMA, W., VERT, C., WHITE, M. P., & NIEUWENHUIJSEN, M. J. (2017). OUTDOOR BLUE SPACES, HUMAN HEALTH AND WELL-BEING: A SYSTEMATIC REVIEW OF QUANTITATIVE STUDIES. *INTERNATIONAL JOURNAL OF HYGIENE AND ENVIRONMENTAL HEALTH*, 229(8), 1207-1221. [HTTPS://DOI.ORG/10.1016/J.IJHEH.2017.08.004](https://doi.org/10.1016/j.ijheh.2017.08.004)
7. NUTSFORD, D., PEARSON, A. L., KINGHAM, S., & REITSMA, F. (2016). RESIDENTIAL EXPOSURE TO VISIBLE BLUE SPACE (BUT NOT GREEN SPACE) ASSOCIATED WITH LOWER PSYCHOLOGICAL DISTRESS IN A CAPITAL CITY. *HEALTH & PLACE*, 39, 70-78. [HTTPS://DOI.ORG/10.1016/J.HEALTHPLACE.2016.03.002](https://doi.org/10.1016/j.healthplace.2016.03.002)
8. BACQ, S., & EDDLESTON, K. A. (2017). A RESOURCE-BASED VIEW OF SOCIAL ENTREPRENEURSHIP: HOW STEWARDSHIP CULTURE BENEFITS SCALE OF SOCIAL IMPACT. *JOURNAL OF BUSINESS ETHICS*, 1-23. [HTTPS://DOI.ORG/10.1007/S10551-016-3317-1](https://doi.org/10.1007/s10551-016-3317-1)
9. AUBIN, A. (2019, JUNE 27). OPINION: CANADA NEEDS TO BUILD ETHICAL SPACES FOR INDIGENOUS PEOPLE. *THE GLOBE AND MAIL*. [HTTPS://WWW.THEGLOBEANDMAIL.COM/OPINION/ARTICLE-CANADA-NEEDS-TO-BUILD-ETHICAL-SPACES-FOR-INDIGENOUS-PEOPLE/](https://www.theglobeandmail.com/opinion/article-canada-needs-to-build-ethical-spaces-for-indigenous-people/)
10. CATTELL, V., DINES, N., GESLER, W., & CURTIS, S. (2008). MINGLING, OBSERVING, AND LINGERING: EVERYDAY PUBLIC SPACES AND THEIR IMPLICATIONS FOR WELLBEING AND SOCIAL RELATIONS. *HEALTH & PLACE*, 14(3), 544-561. [HTTPS://DOI.ORG/10.1016/J.HEALTHPLACE.2007.10.007](https://doi.org/10.1016/j.healthplace.2007.10.007)
11. THE FRIENDS' TO-DO LIST - FALSE CREEK FRIENDS. (N.D.). FALSE CREEK FRIENDS. RETRIEVED MARCH 27, 2023, FROM [HTTPS://WWW.FALSECREEKFRIENDS.ORG/THE-FRIENDS-TO-DO-LIST/](https://www.falsecreekfriends.org/the-friends-to-do-list/)
12. PETTORELLI, N., BARLOW, J., STEPHENS, P. A., DURANT, S. M., CONNOR, B., BUHNE, H. S., SANDOM, C. J., WENTWORTH, J., & DU TOIT, J. T. (2018). MAKING REWIDLING FIT FOR POLICY. *JOURNAL OF APPLIED ECOLOGY*, 55, 1114-1125.