

### Tutorial #3. Navigation in VEC

This tutorial will first introduce the Firestorm user interface, and guide you through how to navigate virtual world with Firestorm.

#### Firestorm user interface



There are many different ways you can navigate in VEC.

#### 1. Walk (Control from your keyboard)

- Walk forward
- Walk backward
- Turn left



- Turn right



- Run

Double-tap



- Jump



(Tap once)

- Fly up



- Fly down



## 2. View

- Reset View



- Zoom



(While press Alt on the keyboard, press on mouse left button and move forward.)

### 3. Teleport (TP)

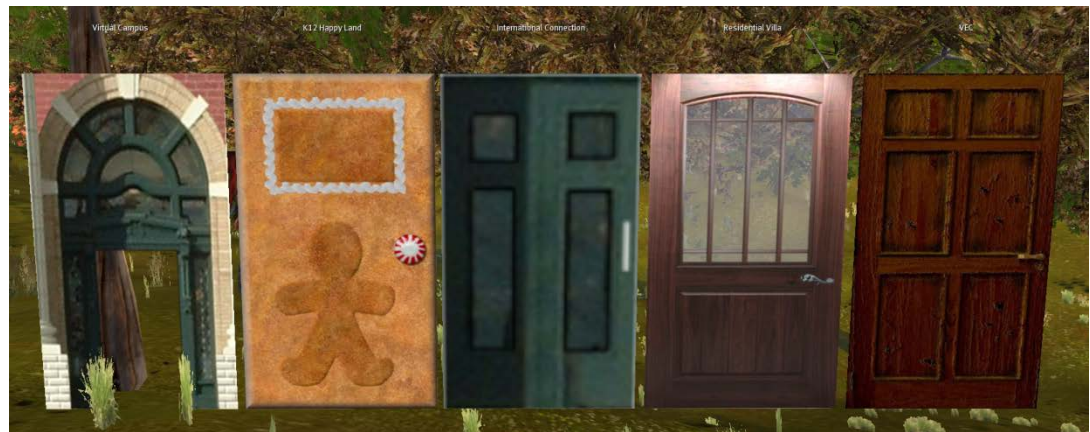
- Map

At the bottom menu you can find a “Mini-Map” icon. Click on it (or use keyboard “ctrl+shift+m”), the mini map will come up. You can double click on the mini map to teleport to the place you would like to go.



- Doors

Currently in VEC, the doors are another way to teleport from one region to another. The hover text on top of the door represents the region the door will take you to.



How to use the door:

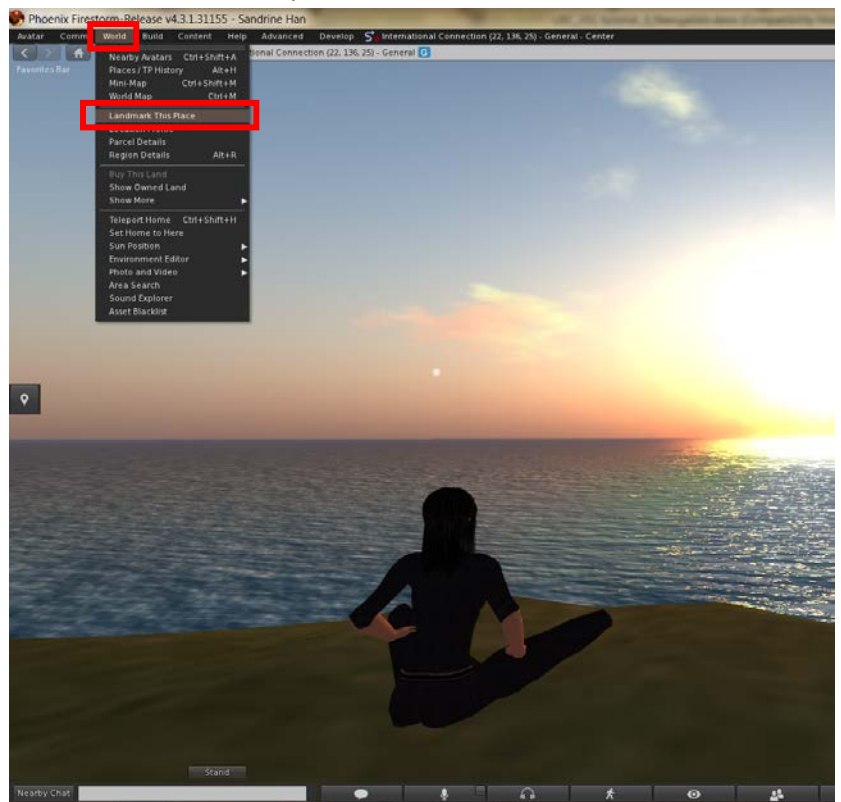
- You can direct your avatar to walk through the door.
- You can use your mouse left click on the door.

- Landmark

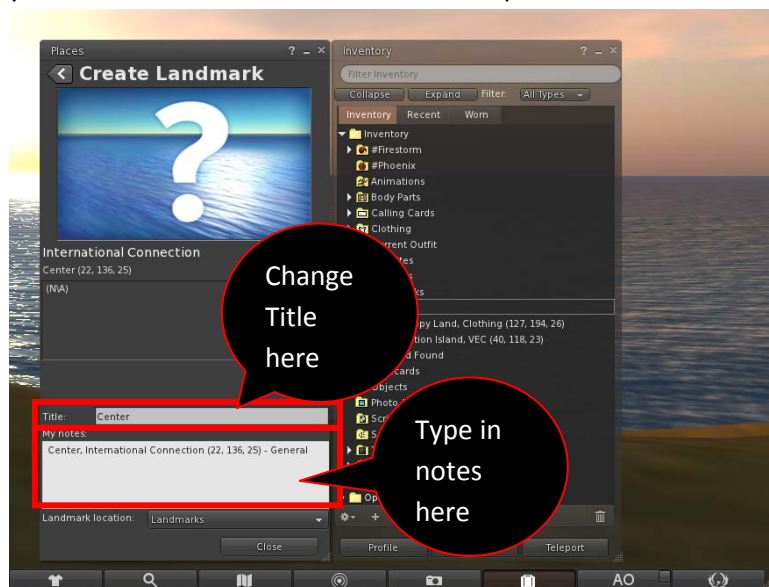
Landmark in the virtual world works like a bookmark. You can create your own landmark so you can go back to the location you like easily.

- Create landmark:

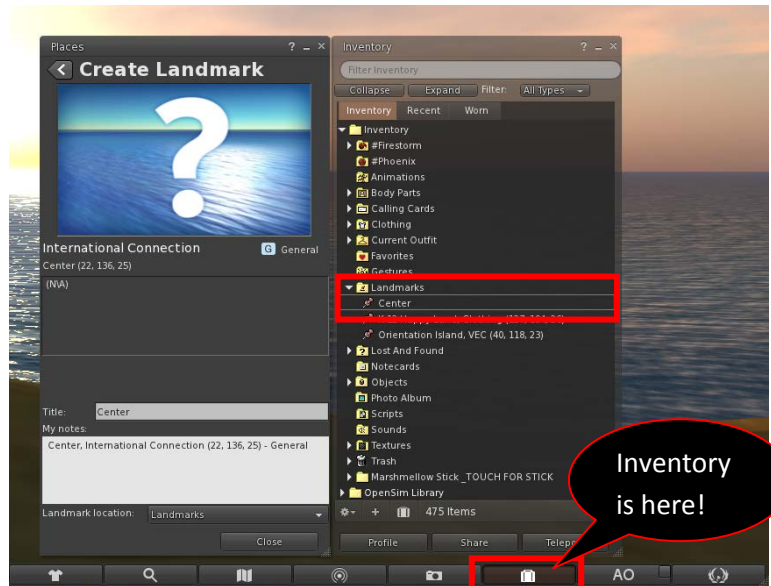
1. When you are at the location you like, go to the top menu, click on “World” tab, in the drag down menu you will find “Landmark This Place,” please mouse left click on it.



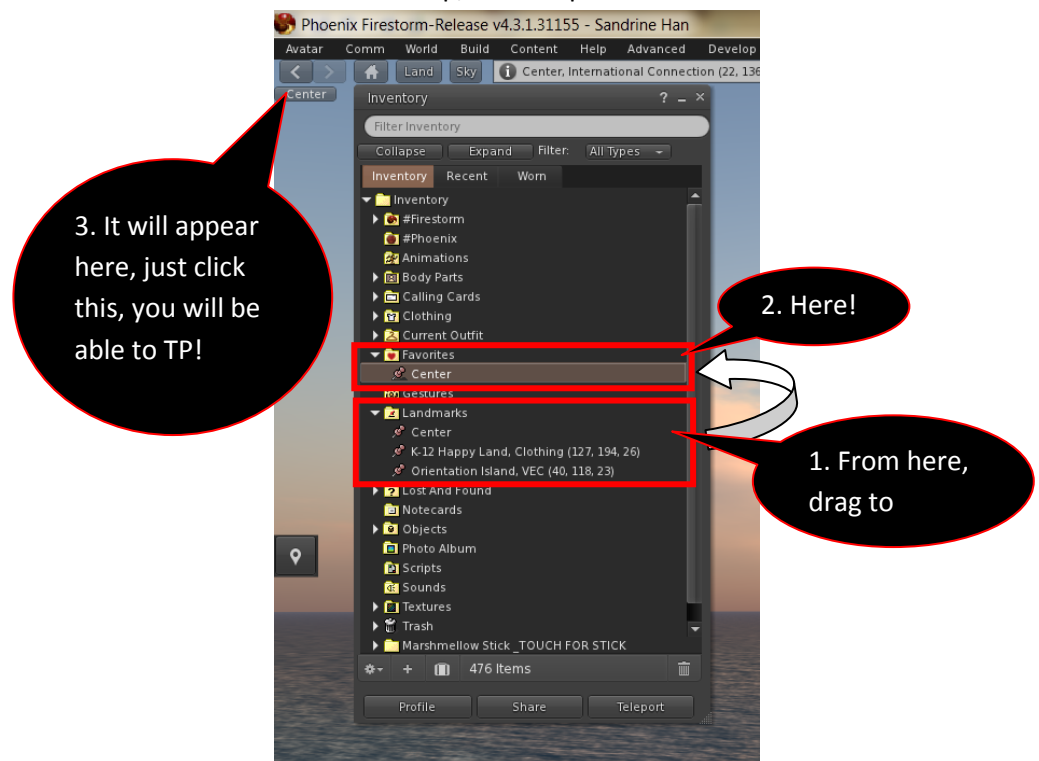
2. After you create a landmark, the “create landmark” window will come up. You can change the title of this landmark and you can also write some notes about this place.



- This landmark will store in your inventory (bottom menu), under "Landmarks."



- You can also mouse left click and drag the landmark you like into the Favorite menu. It will also appear in the top "Favorite menu." Next time, you don't need to open your inventory to teleport (TP), you can just click on the landmark at top, and teleport!



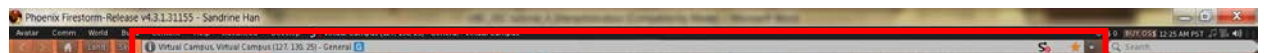


- Teleportor

When you see a teleportor, you can use mouse **right click** on it, and a pie chart will appear. Mouse left click on “Teleport” you will be able to go to the location.



- OSurl



- This address bar will help you to teleport to places within VEC.
- If you see a link look like `hop://142.103.123.135:9000/Virtual Campus/128/130/25` , you can just copy the link and past in this address bar.
- If you like a place, and would like to invite people to join you, you can click on the address bar, copy (ctrl+c) the link, and send this link to your friends.

