

Comparison between Single Kernel Density and Dual Kernel Density results

By: Belinda Liu
For: GEOB479 with Brian Kilkenberg
Date: 8 March 2017
Projection: Transverse Mercator
Data source: Ottawa Police Department, Statistics Canada, DMTI

Figure A. Single Kernel Density

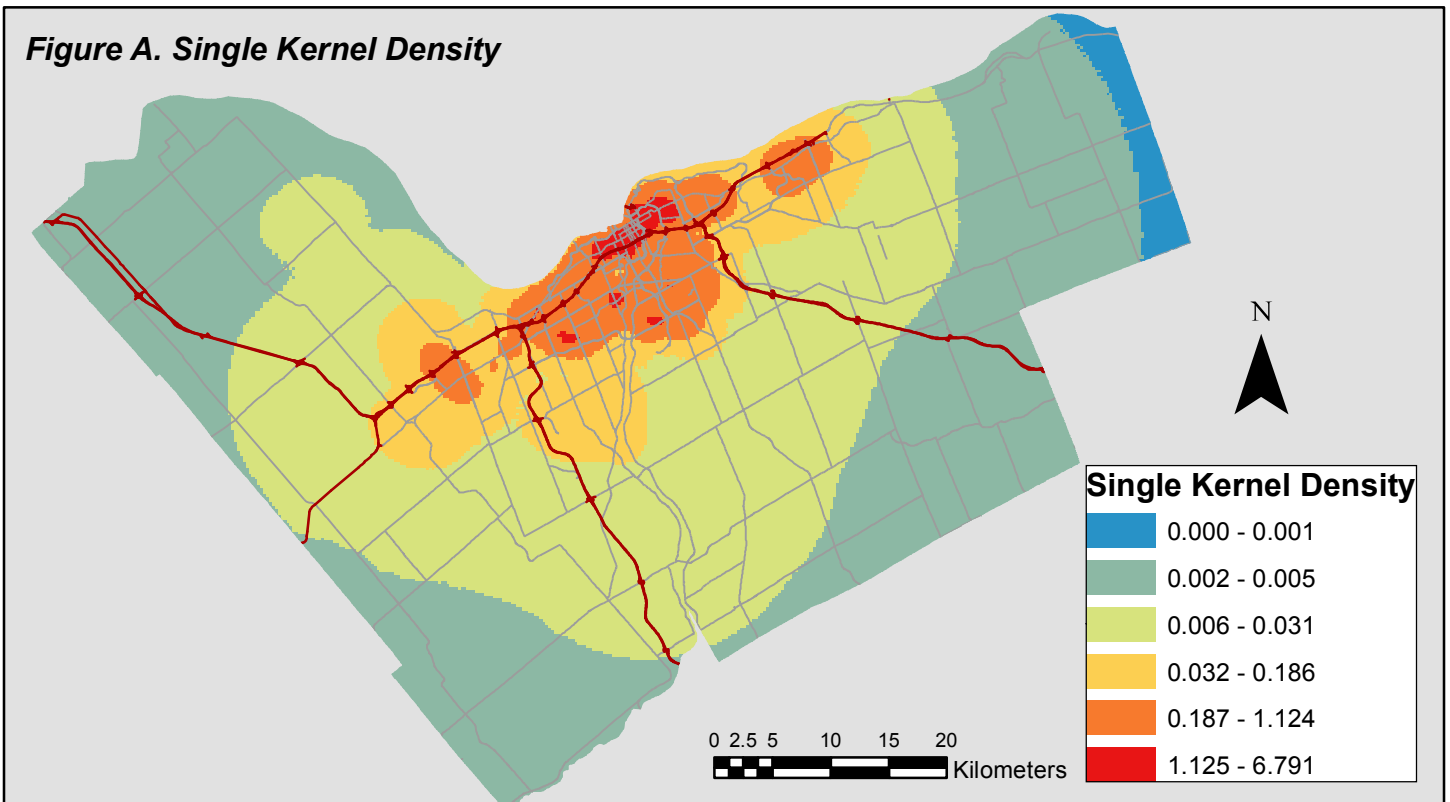


Figure B. Dual Kernel Density

