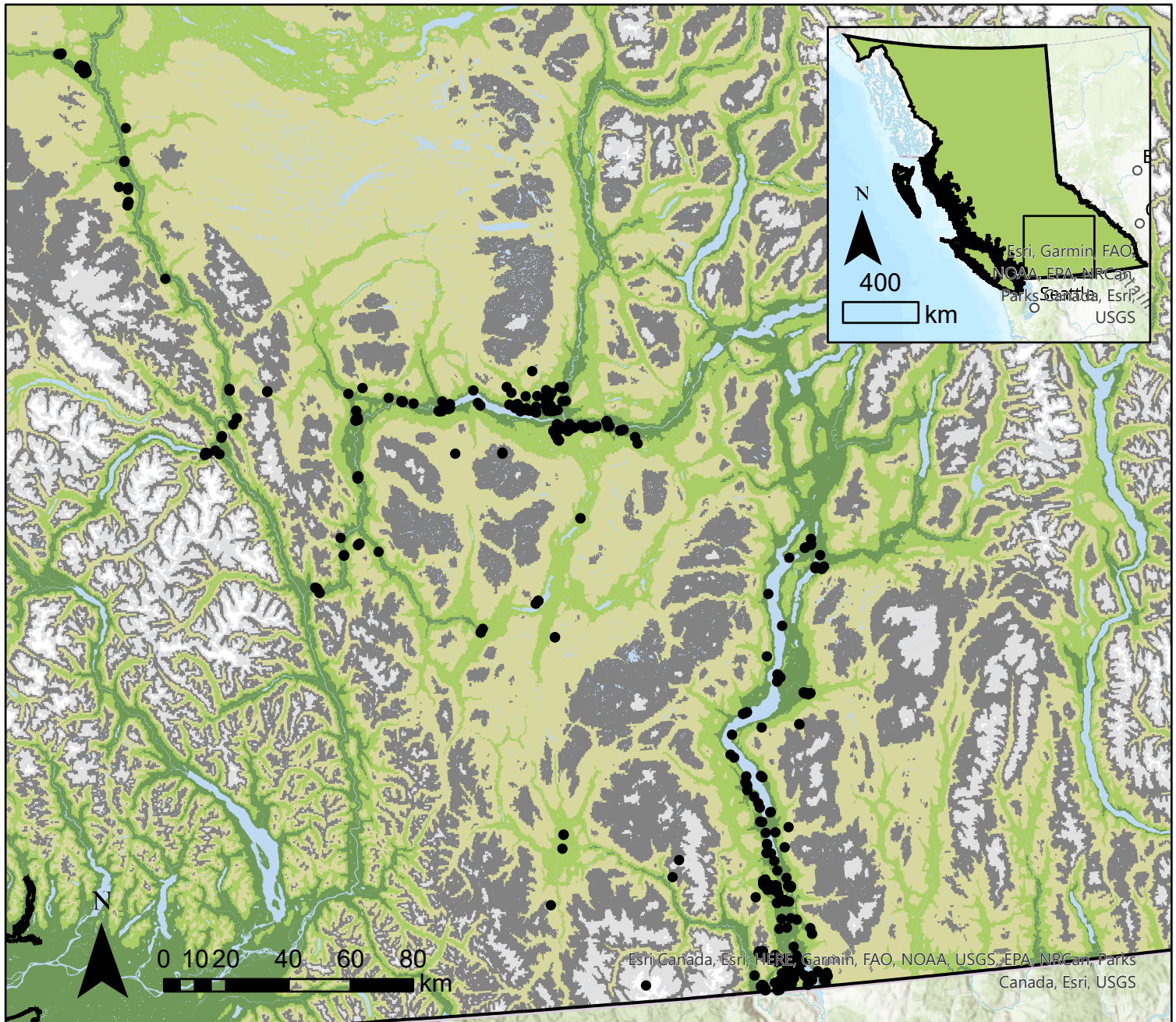


# Map 1: Distribution of big sagebrush across southern British Columbia



- Big sagebrush occurrences
- Rivers and Lakes
- Elevation (metres)
- < 600
- < 1000
- < 1400
- < 1800
- < 2200
- > 2200

This map shows the distribution of big sagebrush (*Artemisia tridentata*) occurrences in southern British Columbia. Data on sagebrush occurrences were collected from GBIF (Global Biodiversity Information Facility). Elevation data shown was collected from the Government of British Columbia's database, and shows the general distribution of the plant species within the valleys of the region. An extent indicator in the upper right provides context to the region shown.

Author: Graydon Gillies  
 Date: 2021-12-11  
 Affiliation: UBC Geog. Dept.  
 Data sources: GBIF, the Government of British Columbia