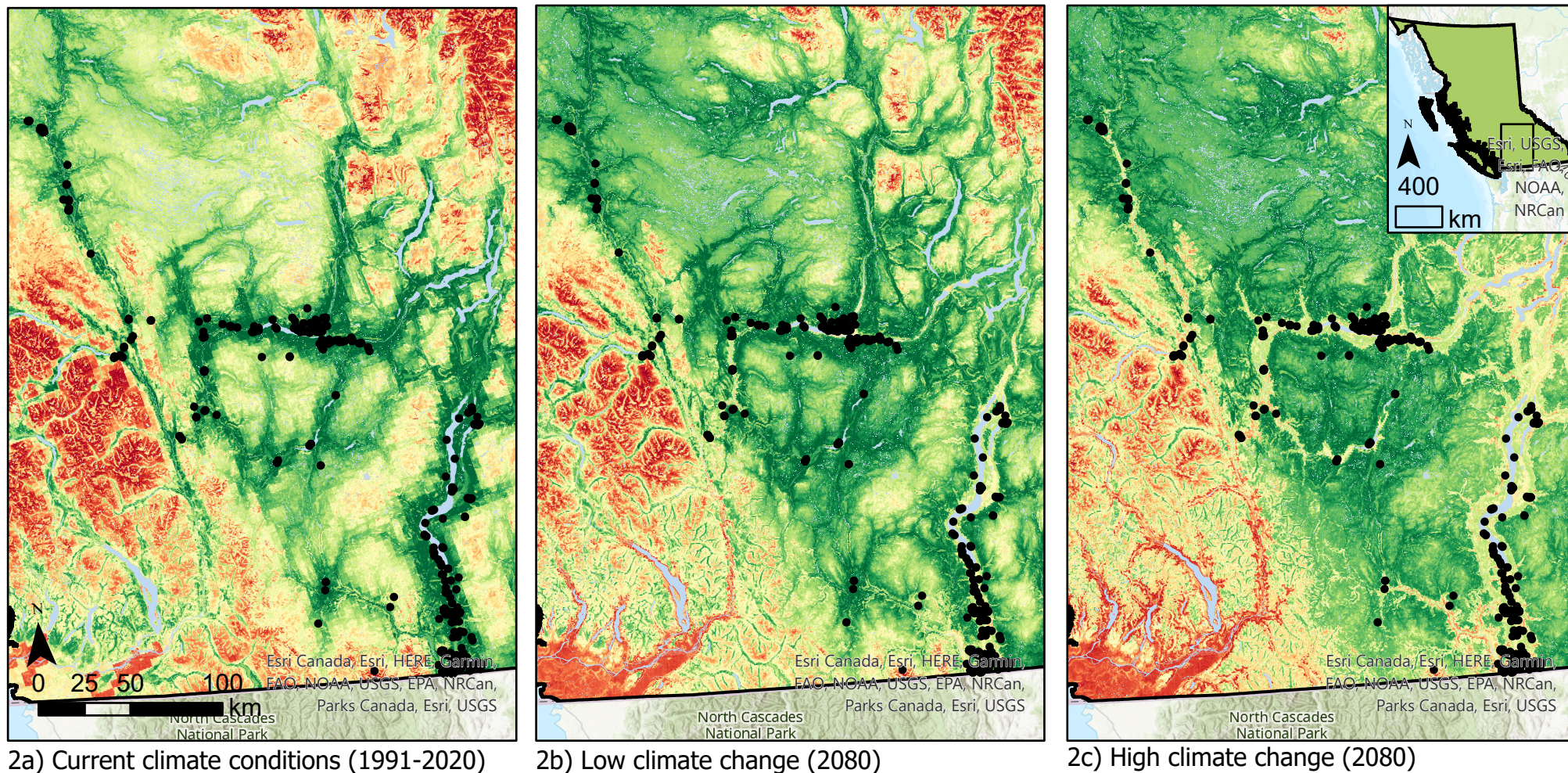


Map 2: Current and projected big sagebrush habitat suitability across southern British Columbia



- Big sagebrush occurrences
 - Rivers and Lakes
- Habitat suitability
- 100
0

This panel of three maps shows the habitat suitability of big sagebrush in the same location of southern British Columbia. Panel (a) shows the current suitability under present (1991-2020) climate conditions. Panels (b) and (c) show the projected habitat suitability under low climate warming and high climate warming conditions, respectively, in the year 2080. Black points indicate the location of current sagebrush occurrences. The coloration of the maps indicates the habitat suitability for the respective climate scenario, with green indicating more suitable habitat and red indicating less suitable habitat.

Author: Graydon Gillies
 Date: 2021-12-11
 Affiliation: UBC Geog. Dept.
 Data sources: GBIF, the Government of British Columbia, AdaptWest