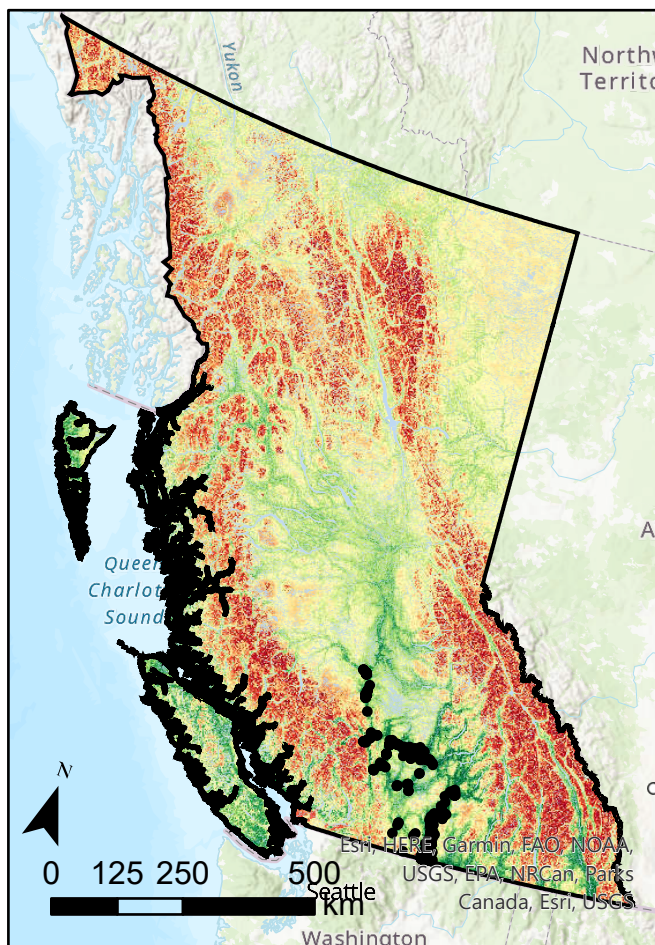
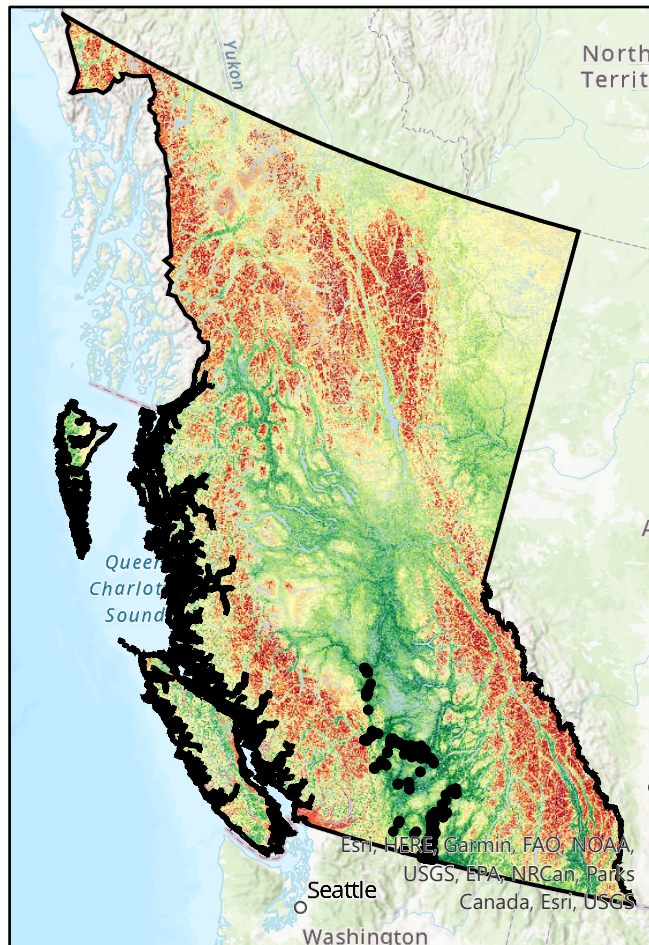


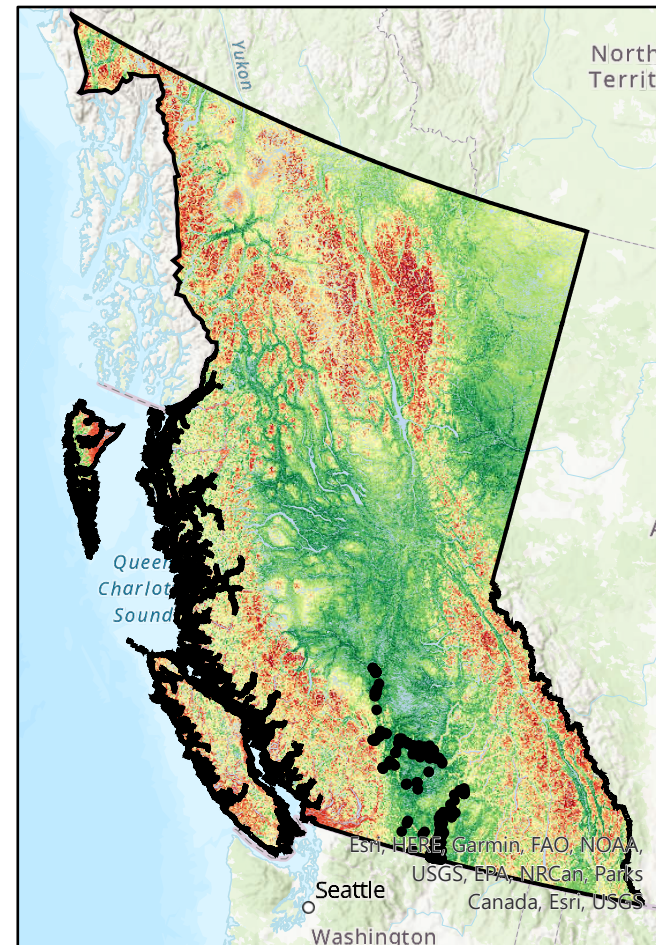
Map 3: Current and projected big sagebrush habitat suitability across British Columbia



3a) Current climate conditions (1991-2020)



3b) Low climate change (2080)



3c) High climate change (2080)

- Big sagebrush occurrences
- Rivers and Lakes
- Habitat suitability



This panel of three maps shows the habitat suitability of big sagebrush in British Columbia. Panel (a) shows the current suitability under present (1991-2020) climate conditions. Panels (b) and (c) show the projected habitat suitability under low climate warming and high climate warming conditions, respectively, in the year 2080. Black points indicate the location of current sagebrush occurrences. The coloration of the maps indicates the habitat suitability for the respective climate scenario, with green indicating more suitable habitat and red indicating less suitable habitat.

Author: Graydon Gillies
 Date: 2021-12-11
 Affiliation: UBC Geog. Dept.
 Data sources: GBIF, the Government of British Columbia, AdaptWest