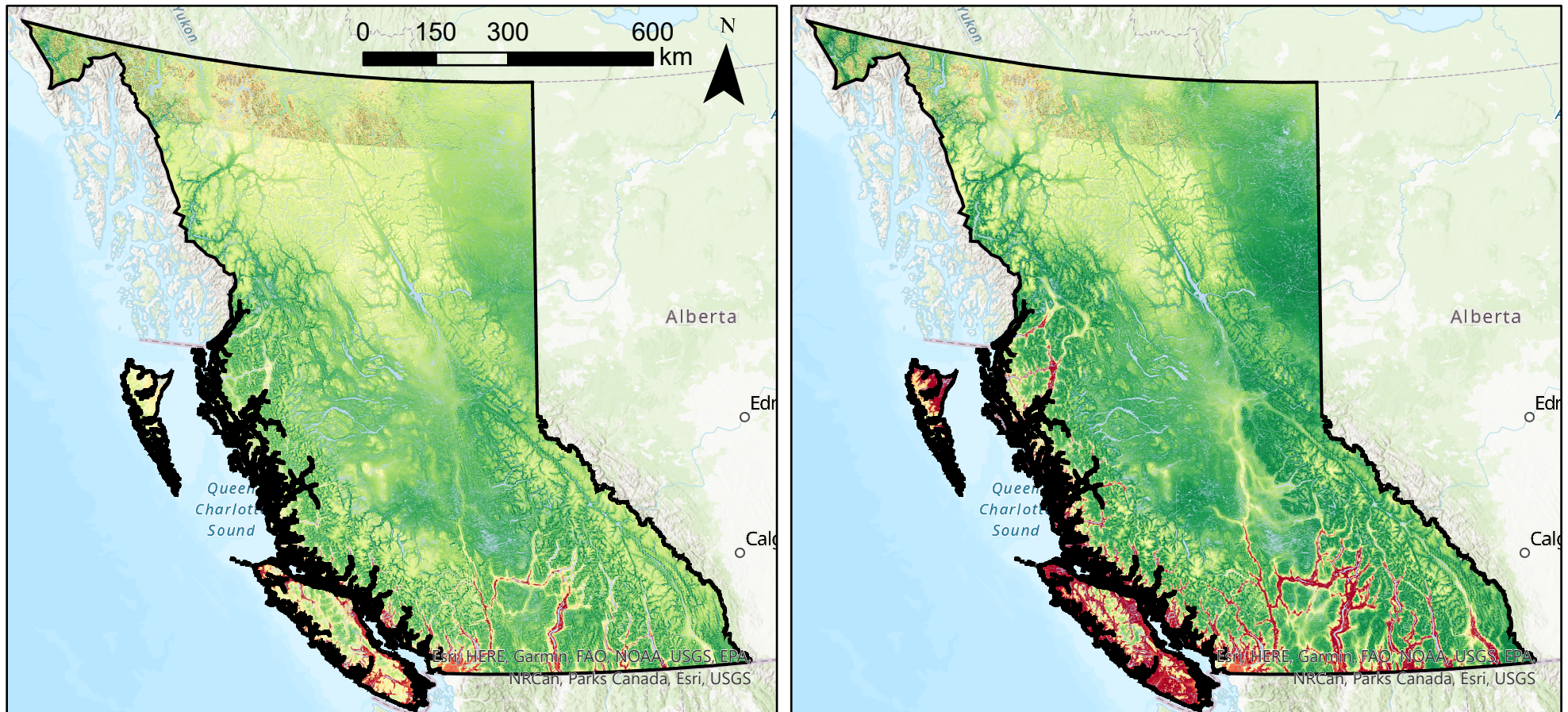
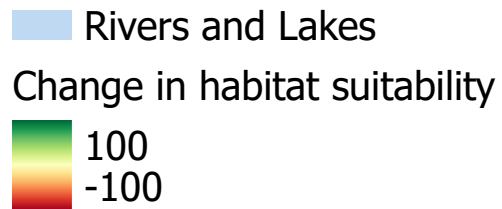


Map 5: Projected change in big sagebrush habitat suitability across British Columbia in 2080



5a) Change in habitat suitability under low climate warming (2080)

5b) Change in habitat suitability under high climate warming (2080)



This panel of two maps shows the projected change in big sagebrush habitat suitability in British Columbia. Panel (a) shows the projected change between current conditions and low climate warming conditions, while panel (b) shows the projected change between current conditions and high climate warming conditions. Projected change was calculated as the projected climate scenario's habitat suitability minus the current estimated habitat suitability. Black points indicate the location of current sagebrush occurrences. The coloration of the maps indicates the relative change in habitat suitability, with green indicating habitat that will become more suitable and red indicating habitat that will become less suitable.

Author: Graydon Gillies
Date: 2021-12-11
Affiliation: UBC Geog. Dept.
Data sources: GBIF, the Government of British Columbia, AdaptWest