



Defining and planning for urban green equity

Lorien Nesbitt, PhD
Postdoctoral Fellow, UBC
LARC 444 553
January 23, 2018

Learning objectives

1

Articulate the dimensions of green equity

2

Identify strategies used to promote green equity and assess their strengths and weaknesses

3

Describe commonly-used methods to assess distributional equity and the outcomes of such analyses





Urban Green Equity:

Fair access to, and governance of, urban forests regardless of differentiating factors, such as socioeconomic status, racialization, cultural background, or age

Why does green equity matter?

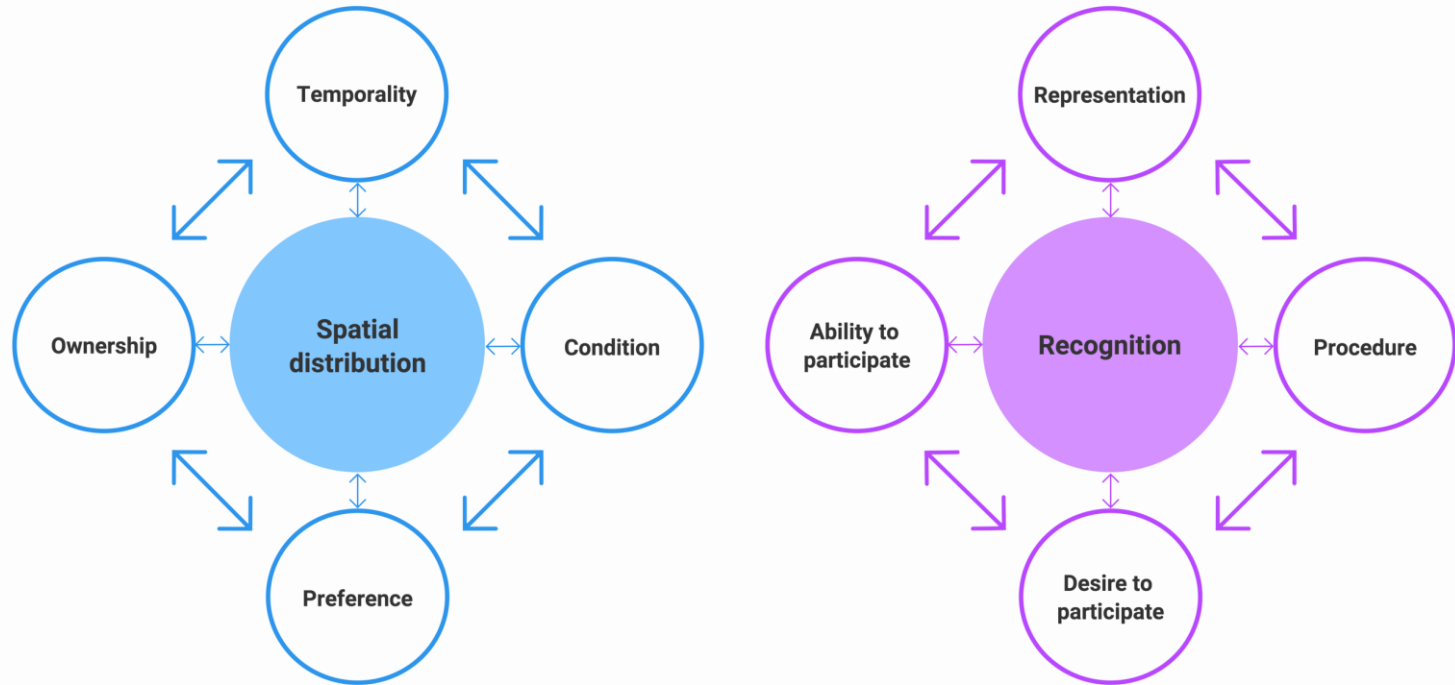


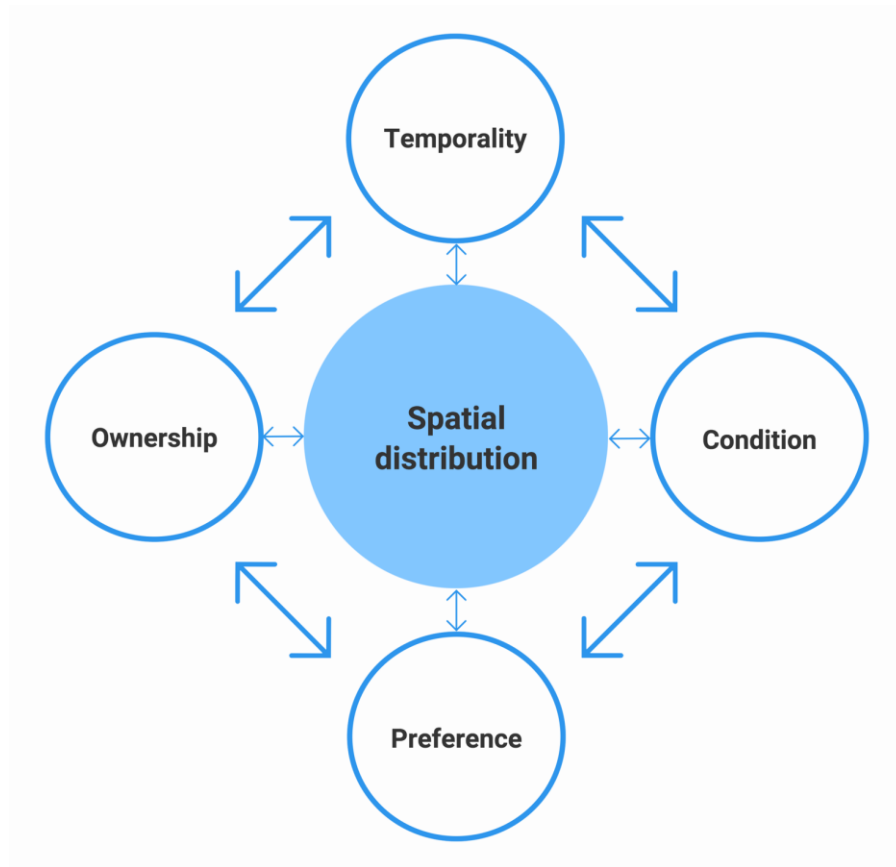


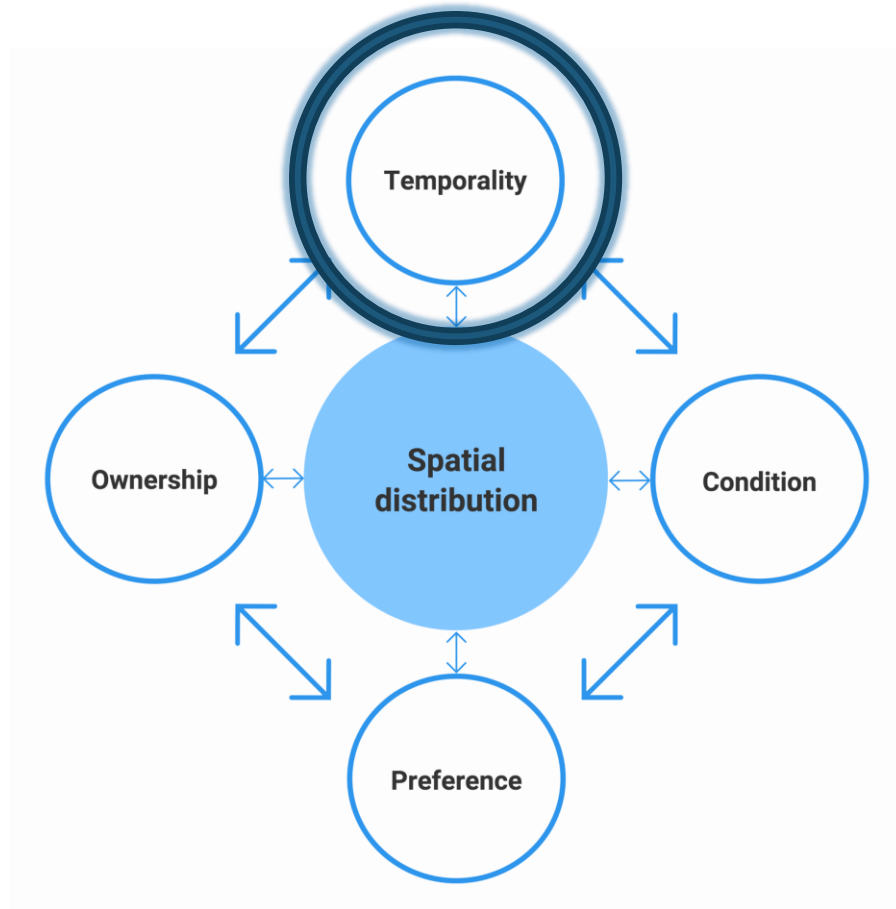
Dimensions of urban green equity

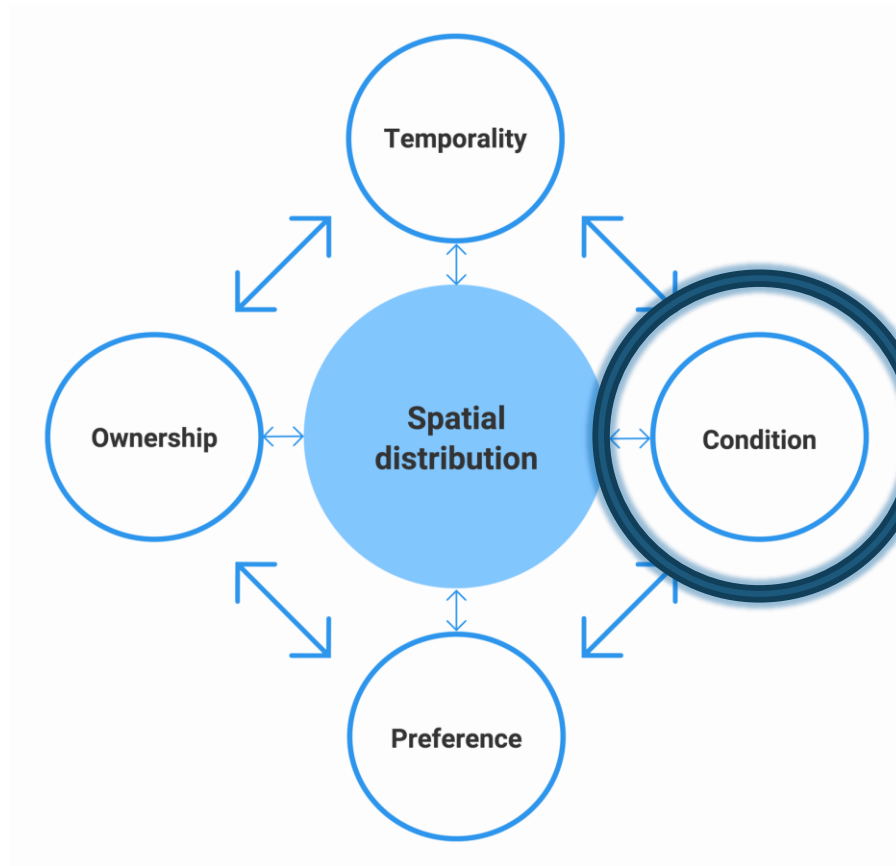
What dimensions provide a common framework for urban green equity analyses?

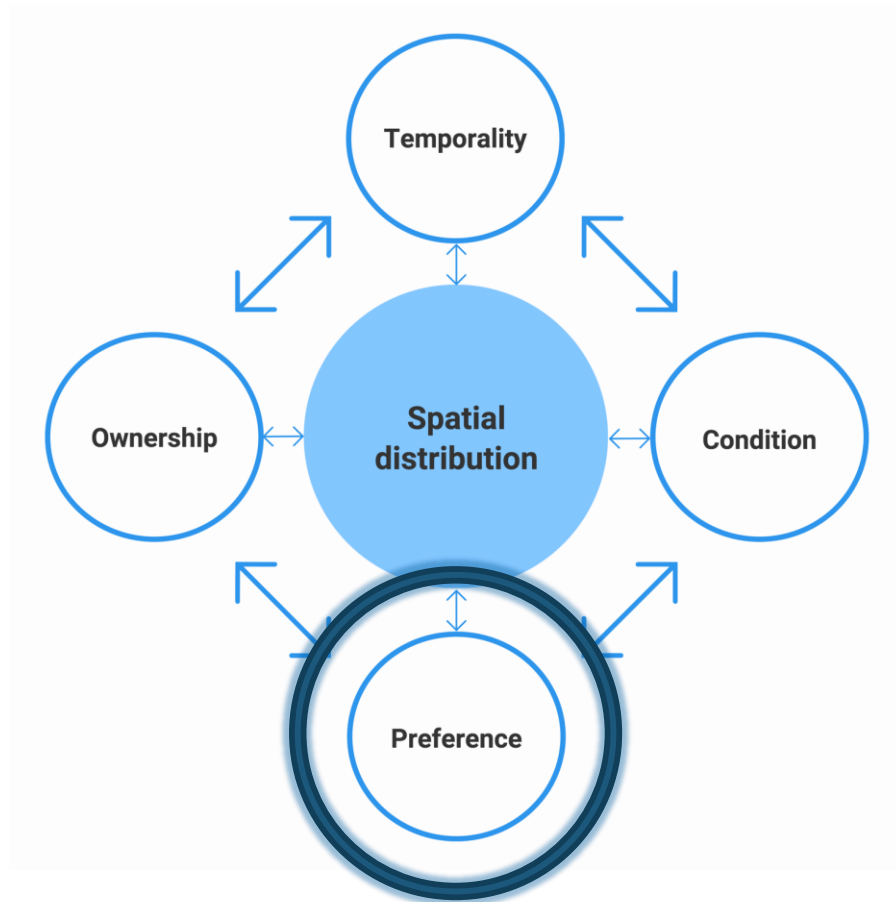
Dimensions of urban green equity

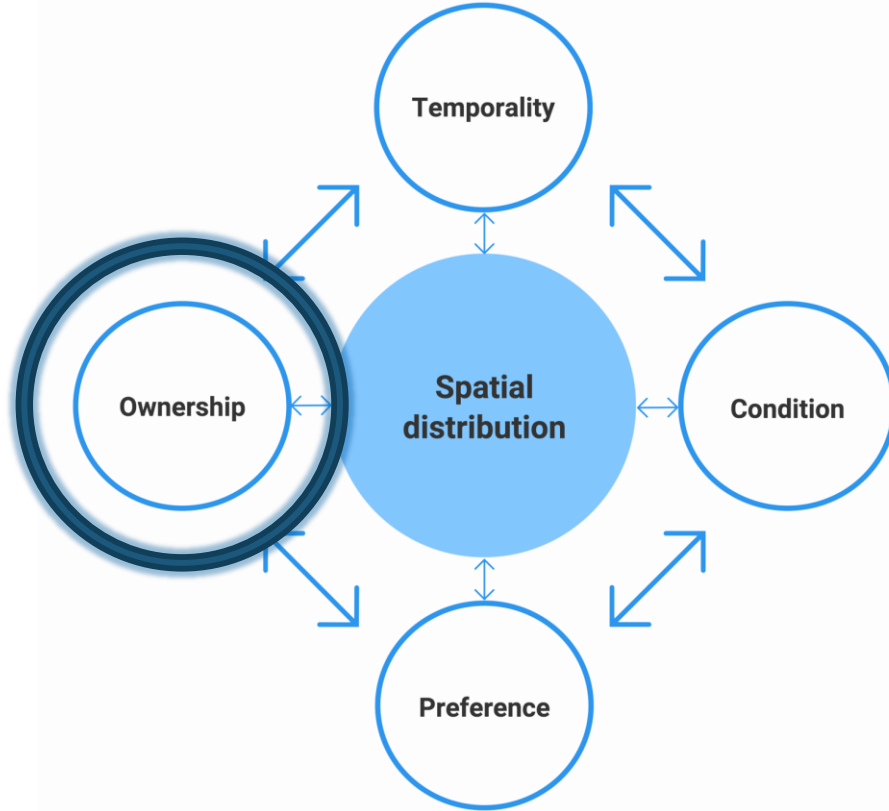


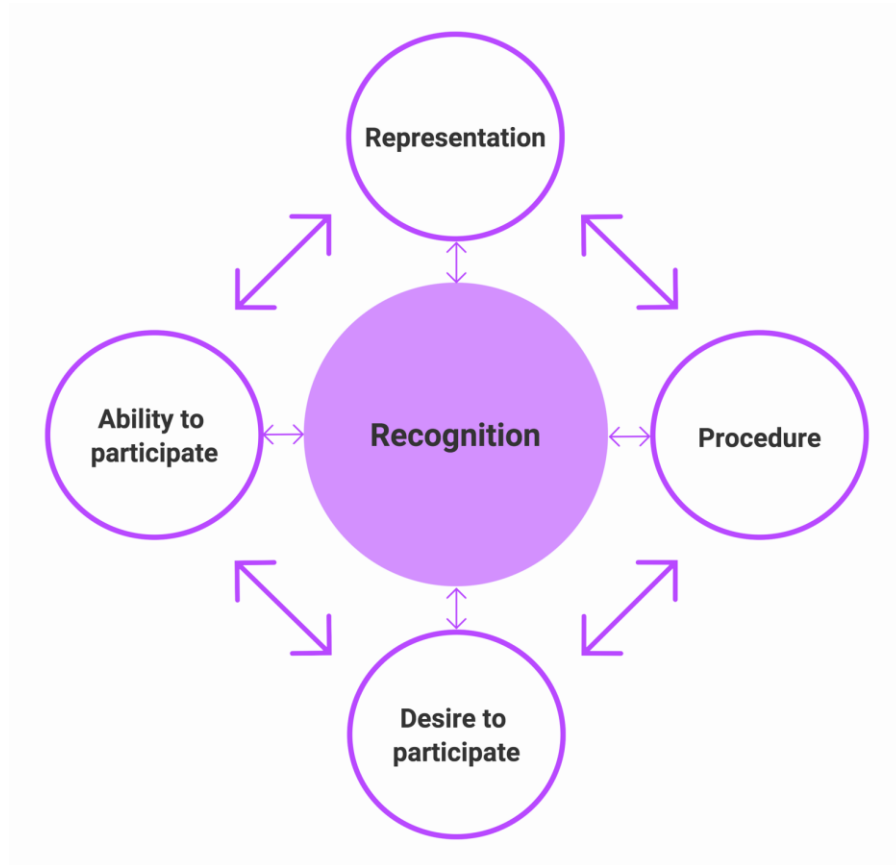


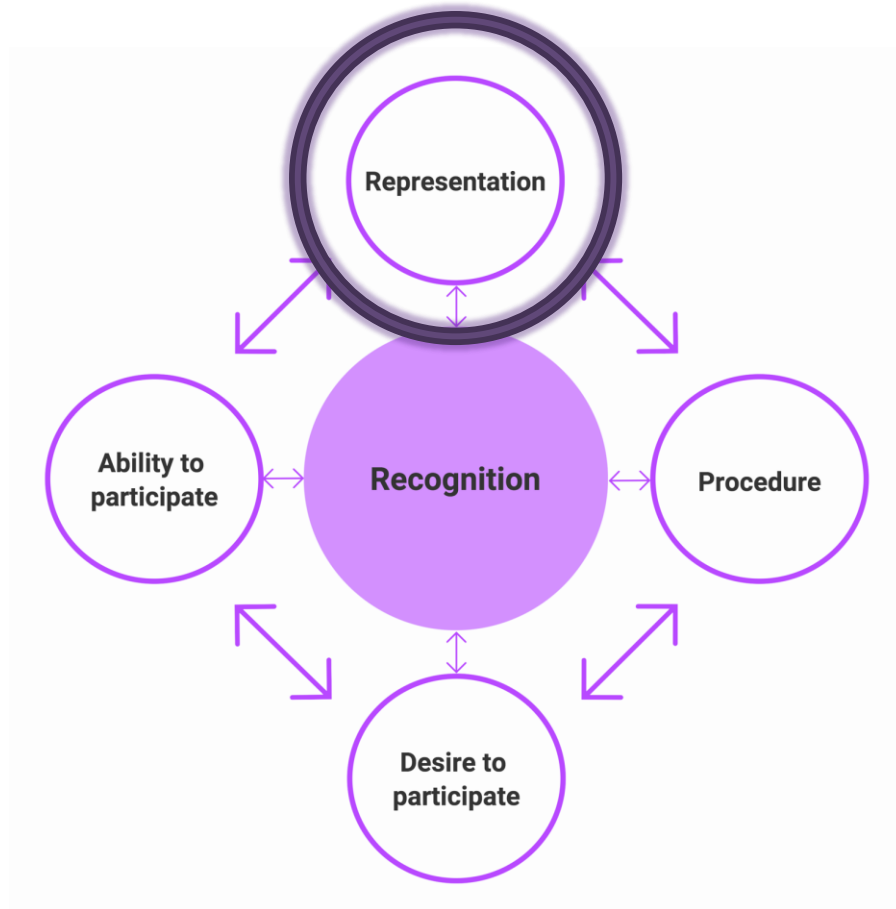


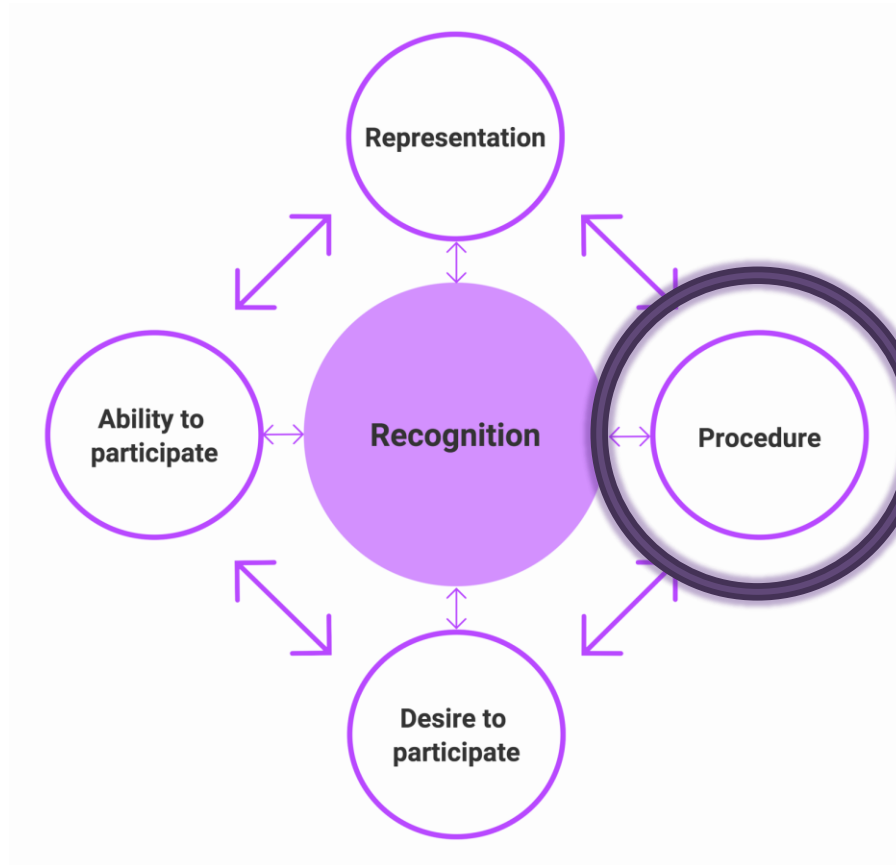


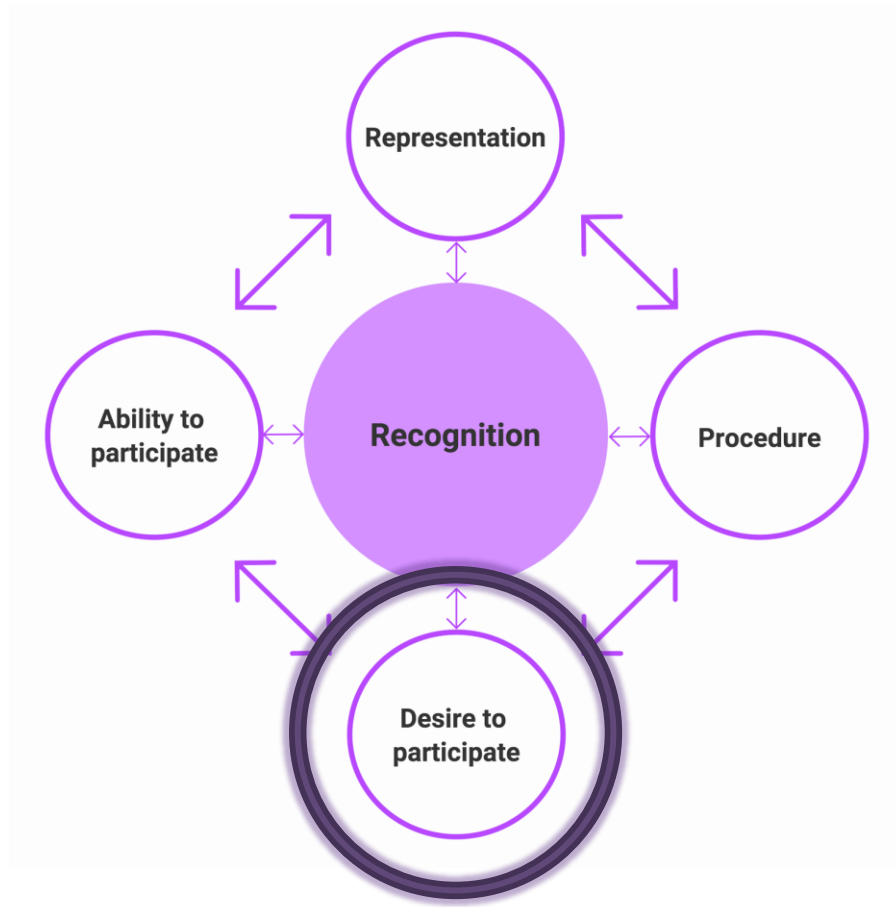


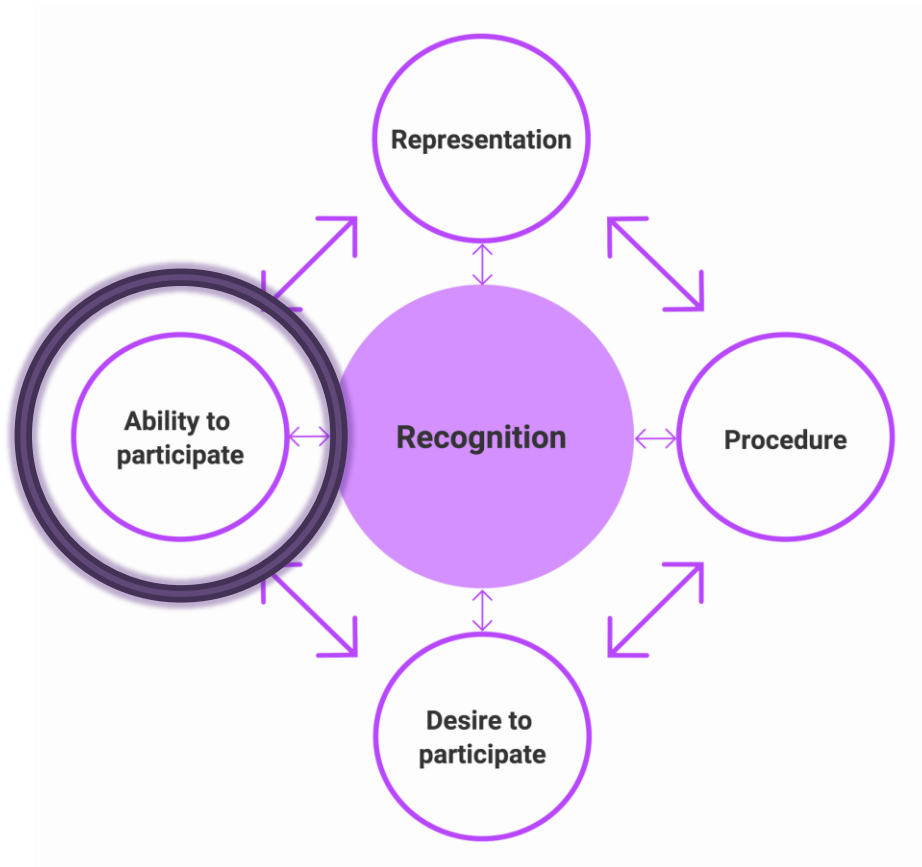


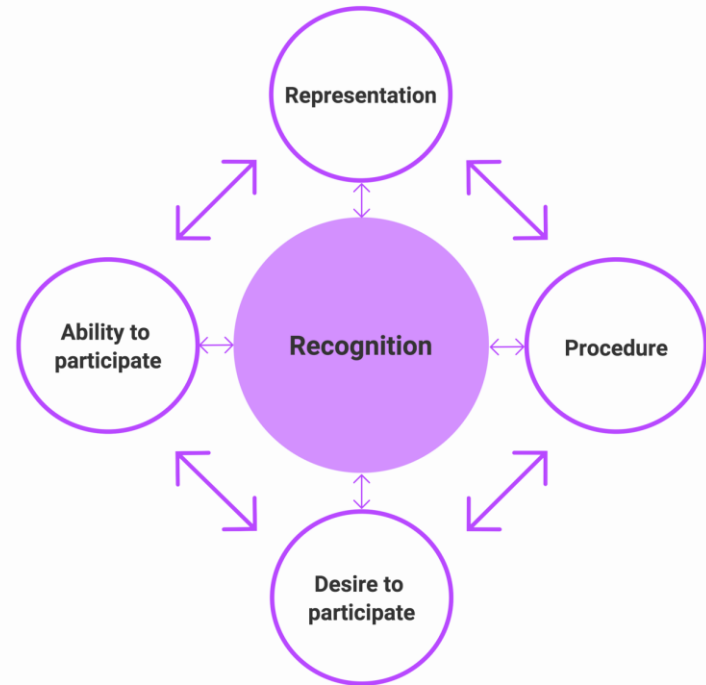
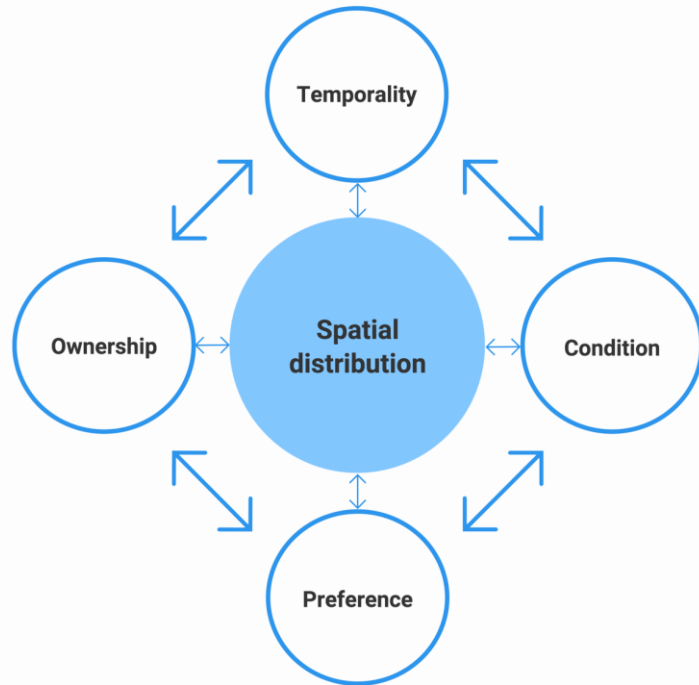














Practitioner conceptions of urban green equity

*How is urban green equity
understood?*

How is it operationalized?



New York



Phoenix

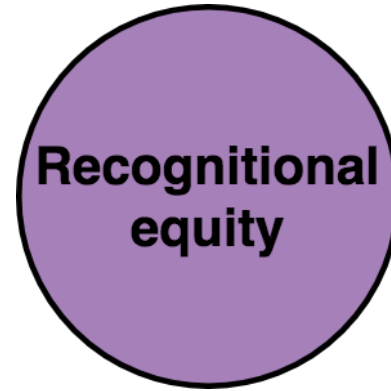
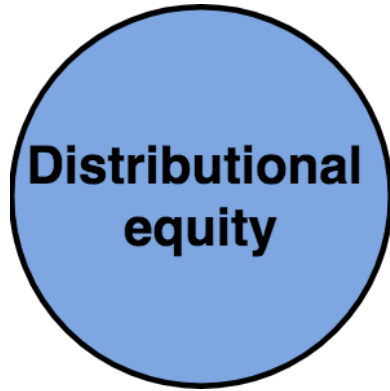


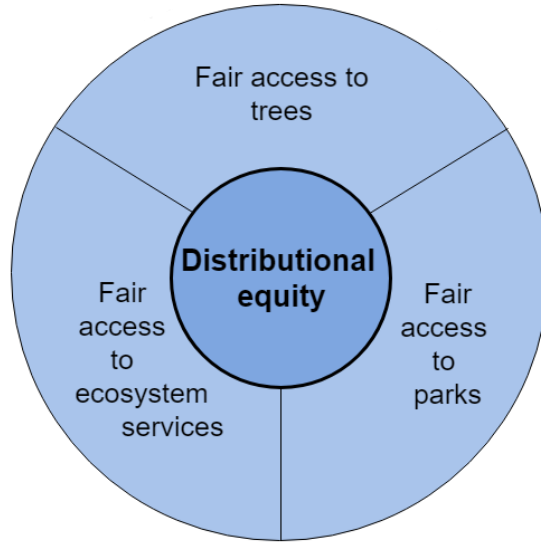
Portland

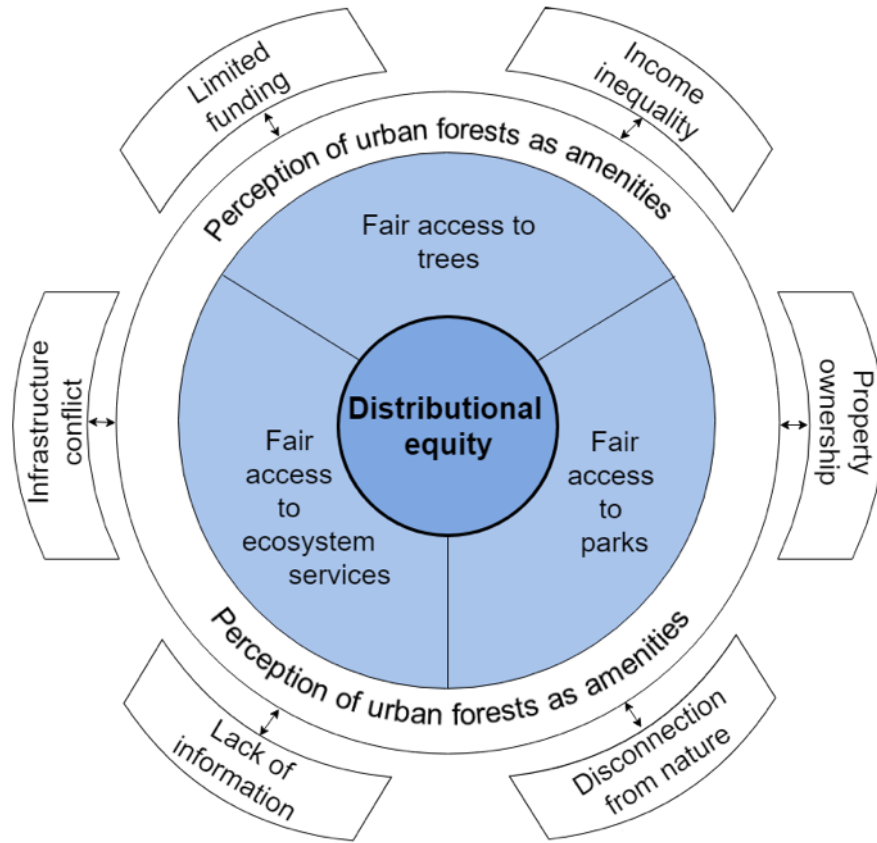


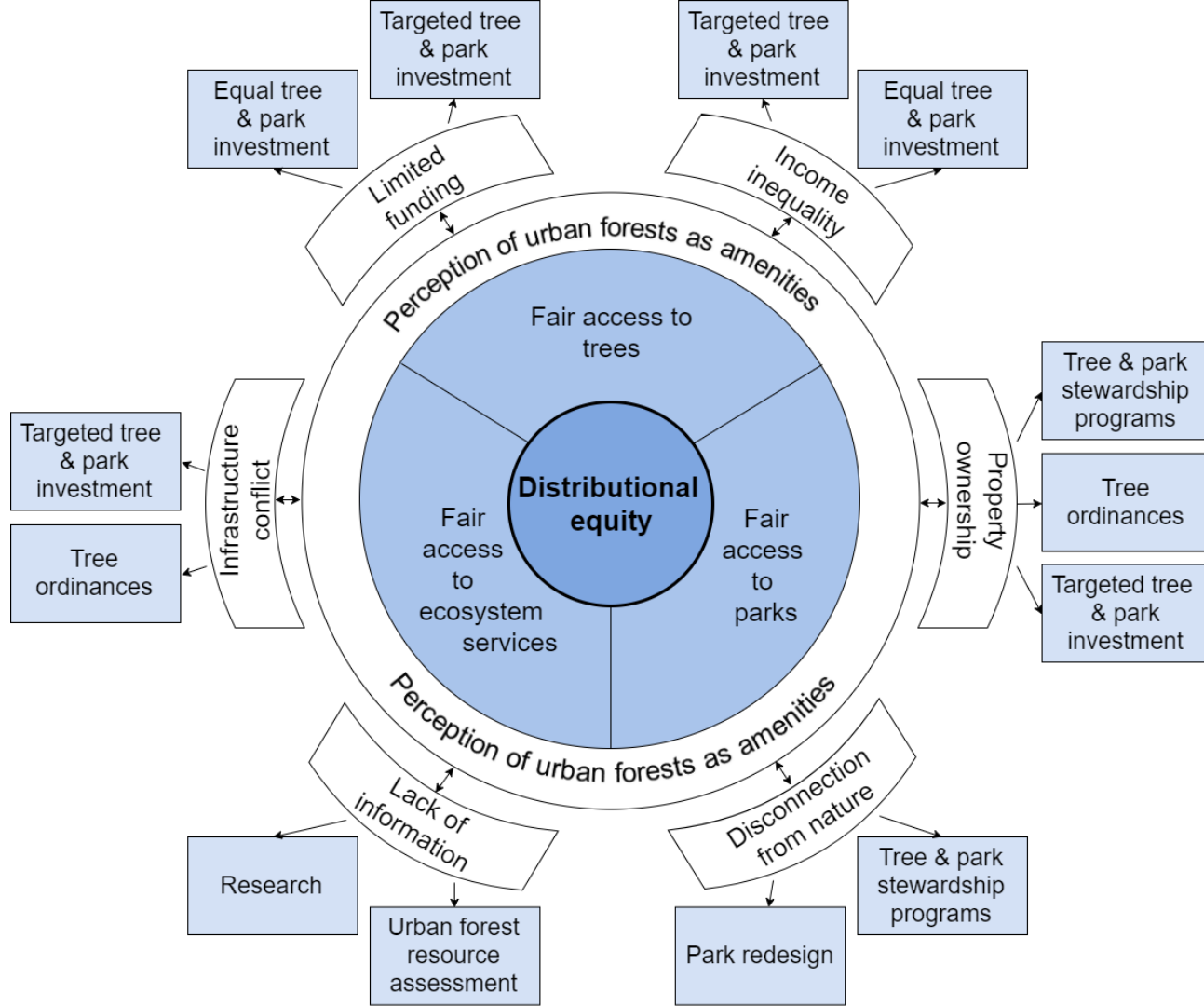
Methods

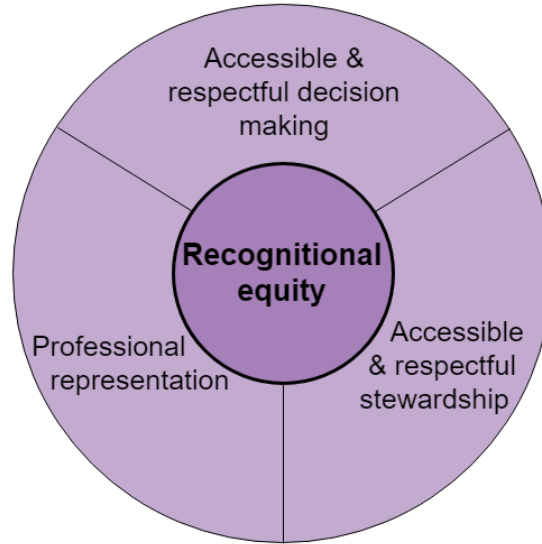
- Semi-structured interviews
- 34 practitioners across all cities (municipal/regional govt., NGOs, community members, academic, business)
- Thematic analysis to identify and quantify themes/sub-themes and relationships with each other

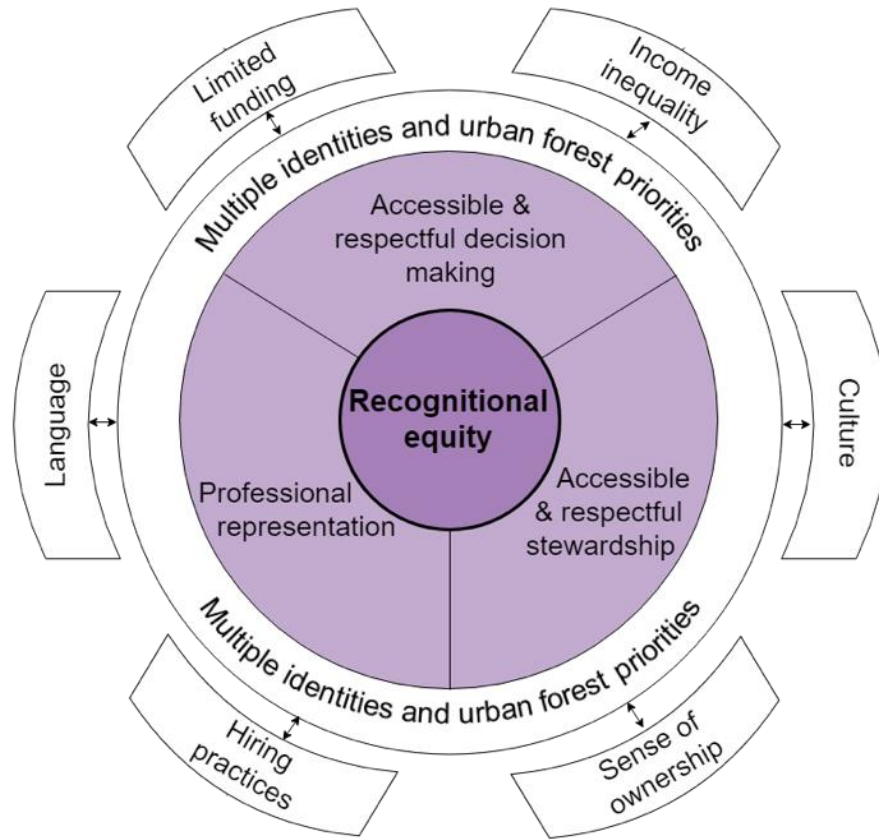


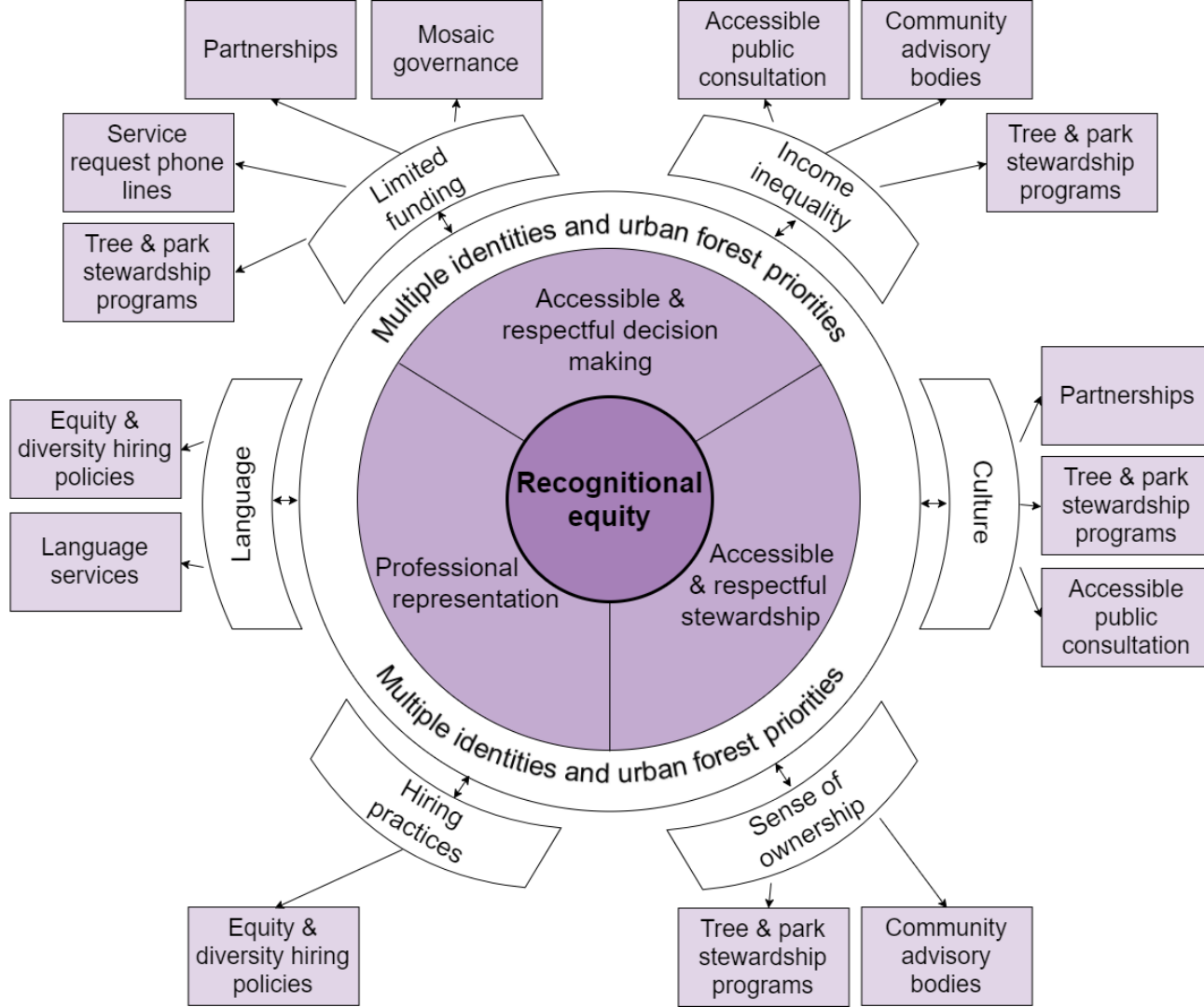












Results

- Distributional equity emphasized over recognitional equity
- Similar themes among municipalities
- Equity plays out through distinct local issues
- “Fair” has different meanings

Results

- Distributional equity emphasized over recognitional equity
- Similar themes among municipalities
- Equity plays out through distinct local issues
- “Fair” has different meanings

Results

- Distributional equity emphasized over recognitional equity
- Similar themes among municipalities
- Equity plays out through distinct local issues
- “Fair” has different meanings

Results

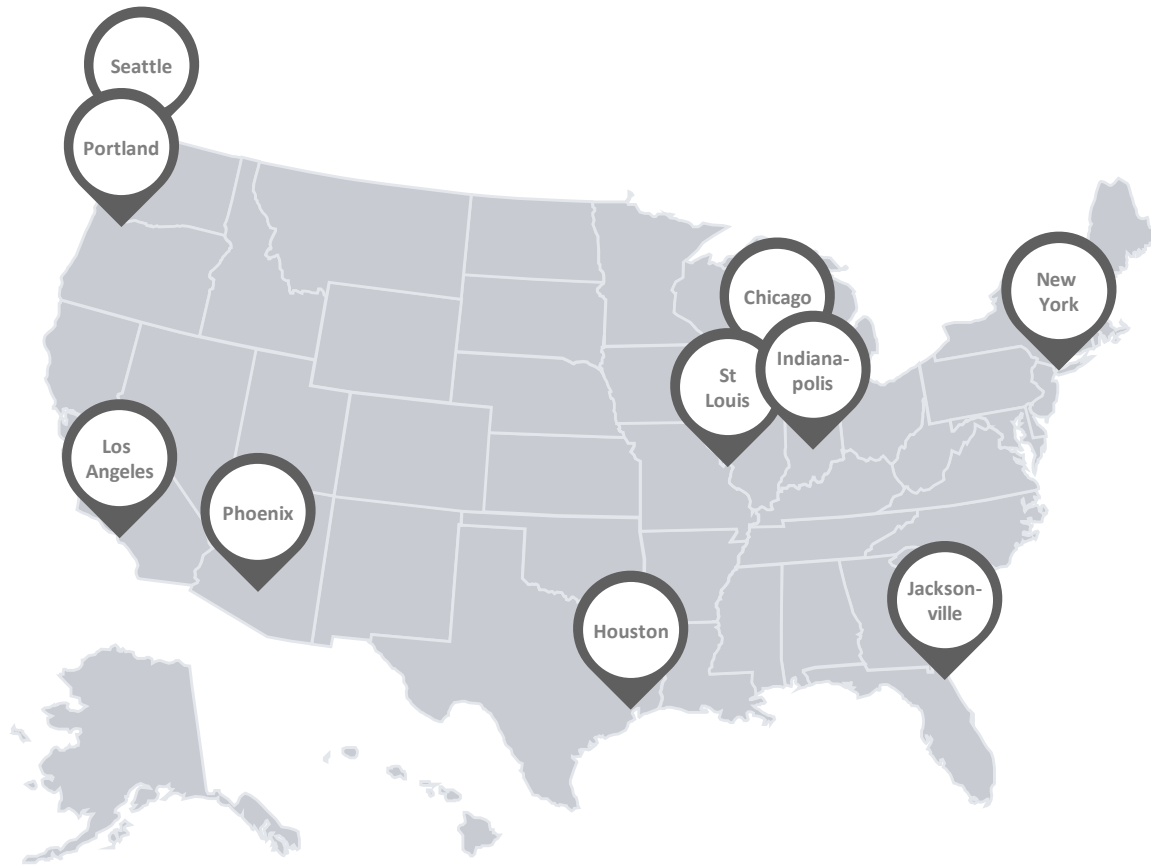
- Distributional equity emphasized over recognitional equity
- Similar themes among municipalities
- Equity plays out through distinct local issues
- “Fair” has different meanings



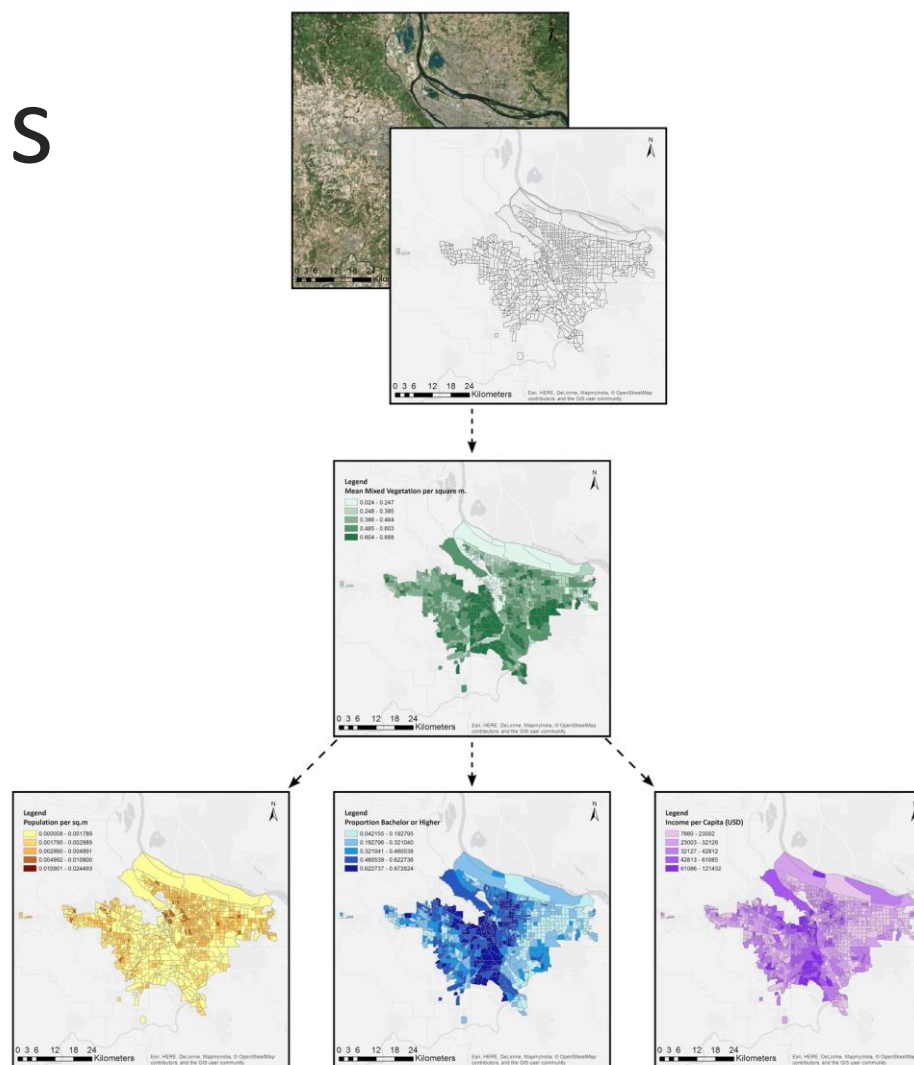
Distributional green equity: a spatial analysis

What are the principal socioeconomic factors associated with urban vegetation distribution across multiple urban areas and vegetation types?

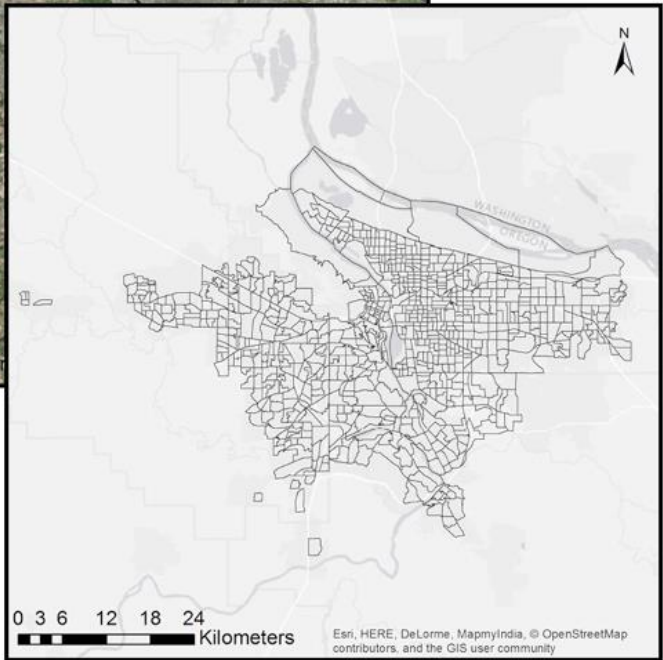
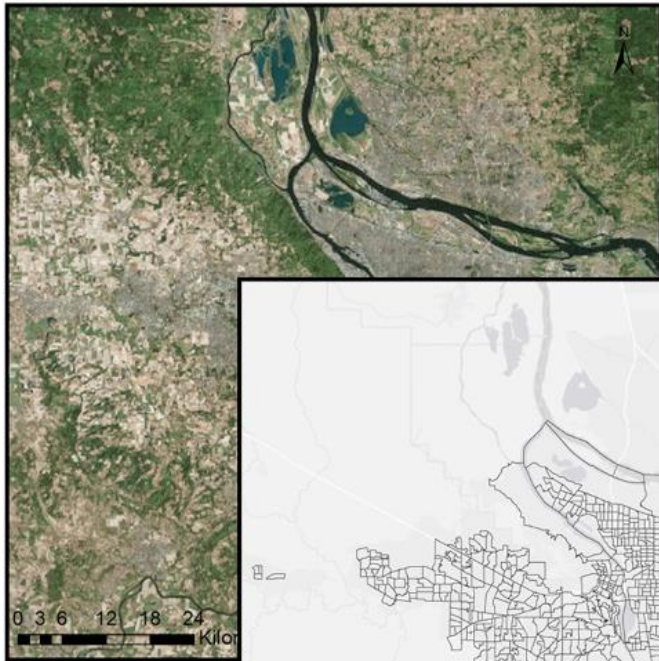
Are different types of urban vegetation differentially distributed?



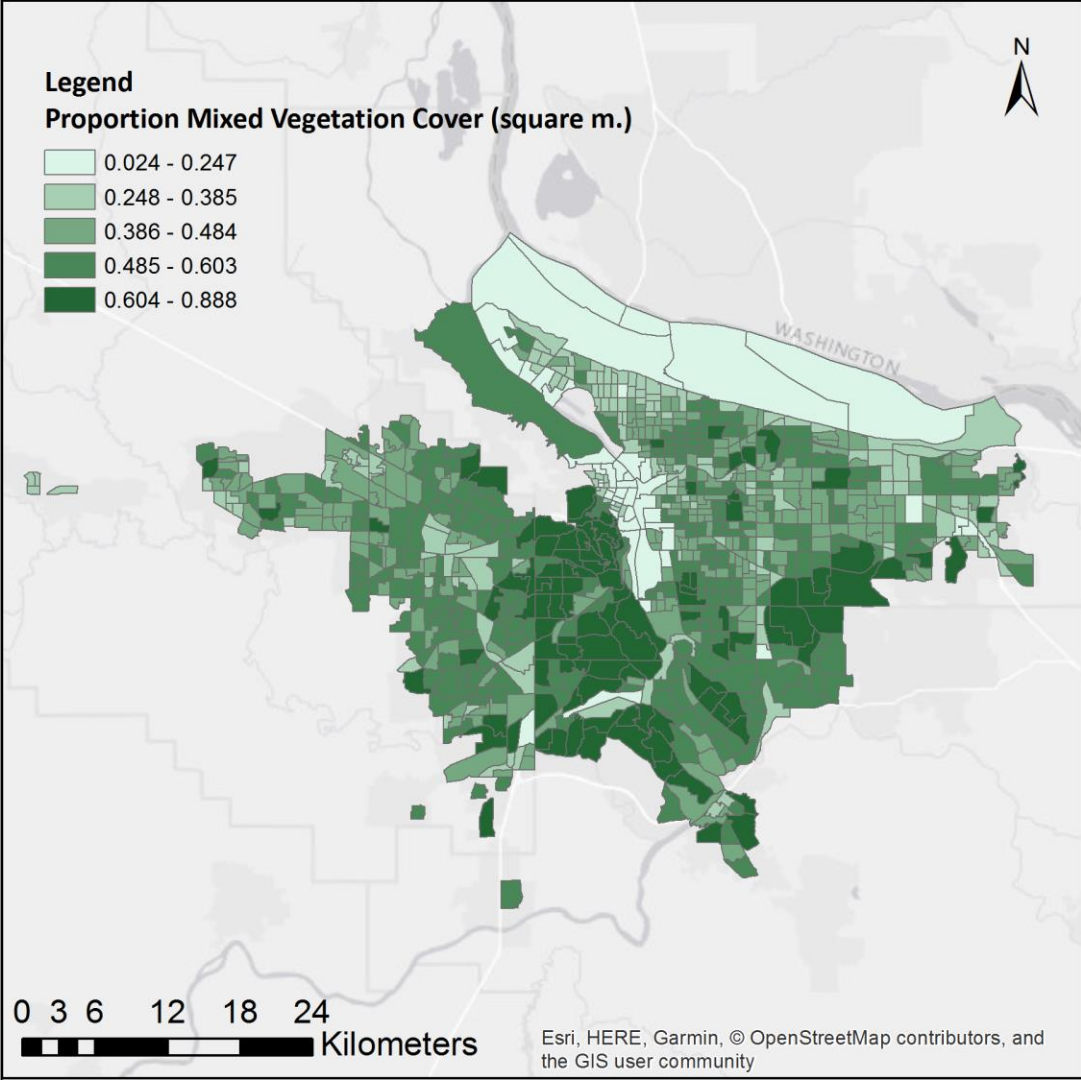
Methods



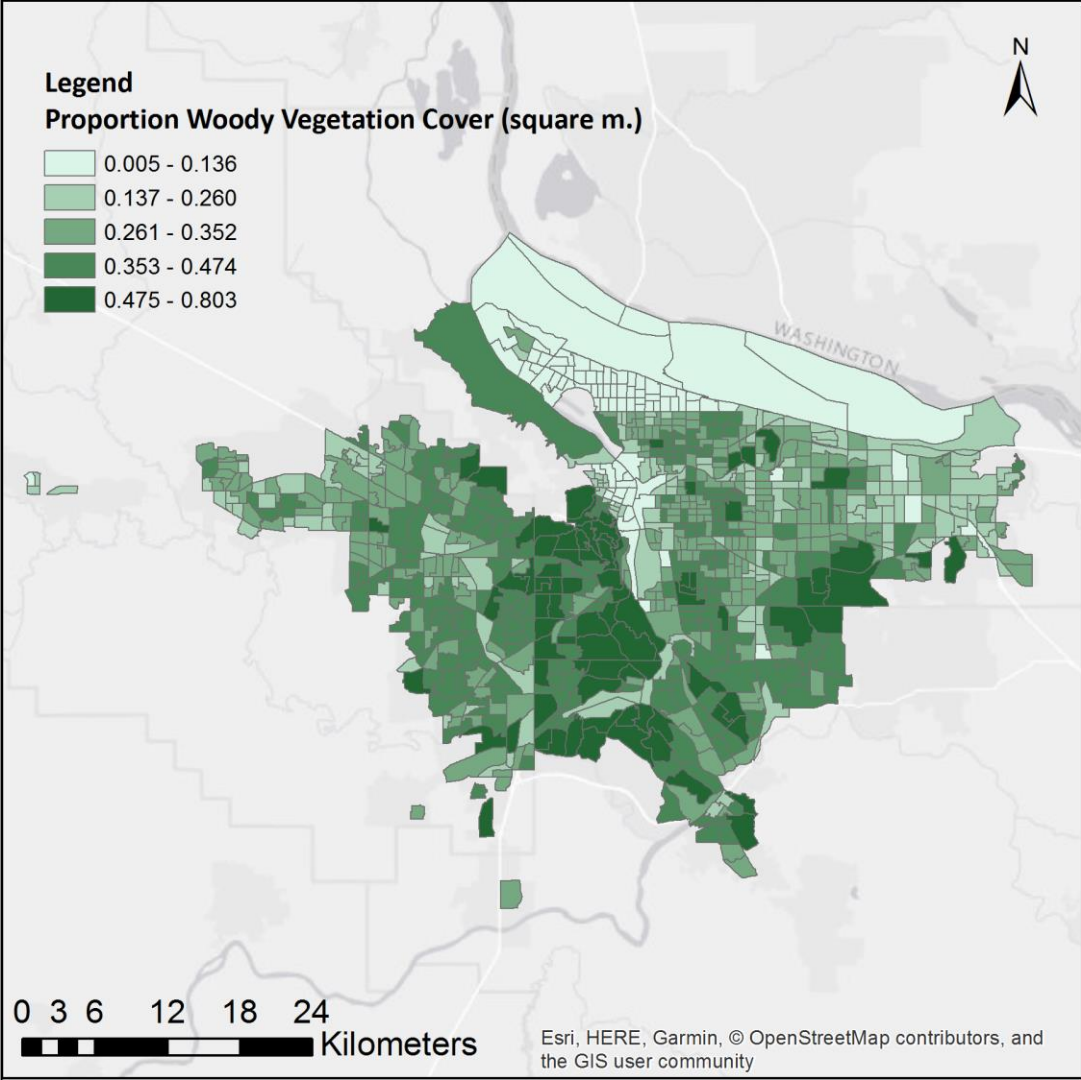
Portland



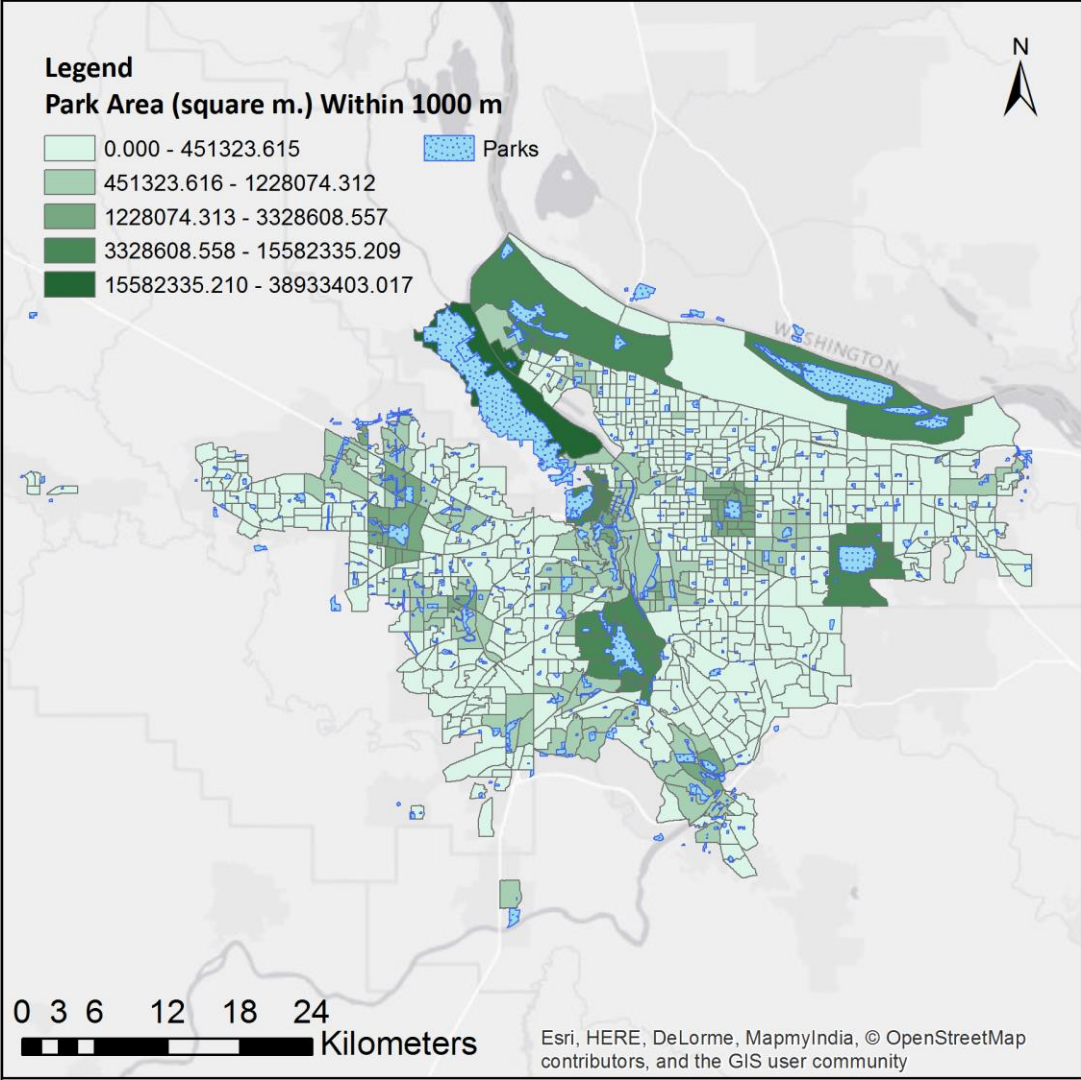
Portland



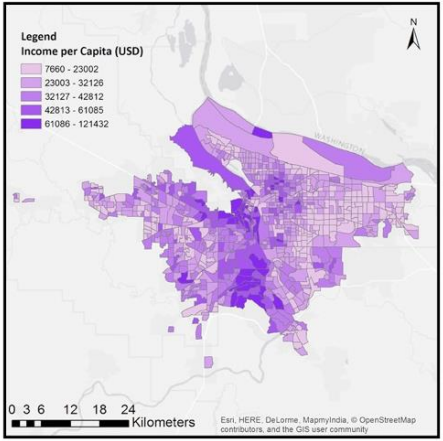
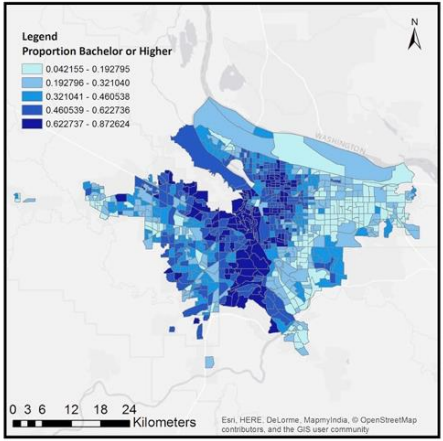
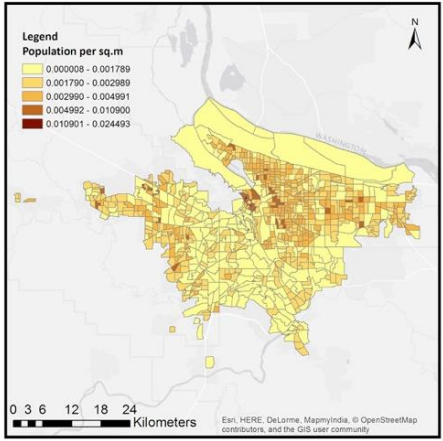
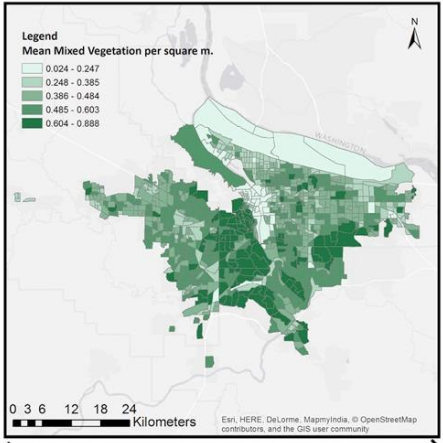
Portland



Portland



Portland



Results

- Income and education most strongly positively associated with urban forest access
- Park area is more equitable than mixed/woody vegetation cover
- Racialized populations have lower access in richer, larger, denser cities
- *Why might this be the case?*

Results

- Income and education most strongly positively associated with urban forest access
- Park area is more equitable than mixed/woody vegetation cover
- Racialized populations have lower access in richer, larger, denser cities
- *Why might this be the case?*

Results

- Income and education most strongly positively associated with urban forest access
- Park area is more equitable than mixed/woody vegetation cover
- Racialized populations have lower access in richer, larger, denser cities
- *Why might this be the case?*

Implications

- Urban forests are desirable
- Canopy enhancement should focus on lower-income/lower-education neighbourhoods
- Urban forest interventions should also include recognitional equity
- Inclusive decision making, accessible stewardship

Implications

- Urban forests are desirable
- Canopy enhancement should focus on lower-income/lower-education neighbourhoods
- Urban forest interventions should also include recognitional equity
- Inclusive decision making, accessible stewardship

Implications

- Urban forests are desirable
- Canopy enhancement should focus on lower-income/lower-education neighbourhoods
- Urban forest interventions should also include recognitional equity
- Inclusive decision making, accessible stewardship

Implications

- Urban forests are desirable
- Canopy enhancement should focus on lower-income/lower-education neighbourhoods
- Urban forest interventions should also include recognitional equity
- Inclusive decision making, accessible stewardship

In-class / take-home exercise

Scenario: The City of Vancouver has funding to plant 500 trees on public land in September/October 2019. The city would like to use these trees to increase urban green equity in the city. Based on what we have discussed today:

1. Define 3 specific urban green equity objectives you would like to accomplish
2. Identify key pieces of information you will need to accomplish your objectives
3. Describe 3-4 steps you will take to meet your objectives
4. Assess the strengths and weaknesses of your approach – What is likely to work well? What is a potential source of weakness? What key challenges might you expect to encounter?

Learning objectives

1

Articulate the dimensions of green equity

2

Identify strategies used to promote green equity and assess their strengths and weaknesses

3

Describe commonly-used methods to assess distributional equity and the outcomes of such analyses