

*GOOD
MORNING!*

Mar. 3rd 2014



THE SETTING

- Come up with a 10 word phrase describing the physical setting
- How does the setting contribute to the mood/atmosphere at the onset of the story?

THE SOUND OF WAVES

- "Written in the afterglow of a journey to Greece and a study of its culture...[the novel] radiates an aura of gentle affection and endearing innocence. Evil...remains on the periphery" (Wagenaar & Iwamoto, 1975)
- Often referred to as a classic, timeless story
- An anomaly in Mishima's writing: "The only love story that Mishima ever wrote that was not perverse" (Napier, 1991)

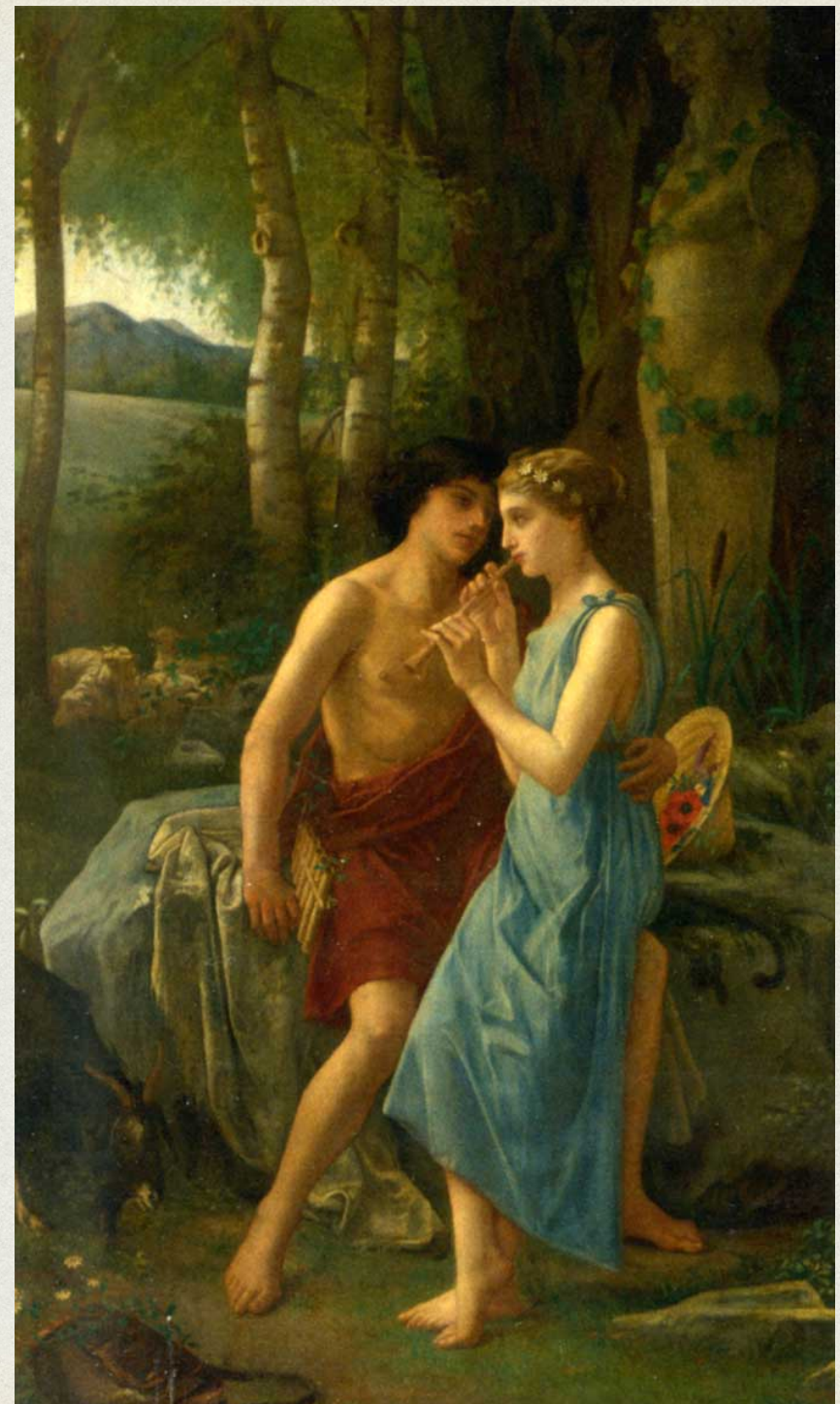
PASTORAL LITERATURE

- the highly romanticized countryside
- idyllic, simple, harmonious, traditional



GREEK INFLUENCES

- *Sound of Waves* - loosely based on *Daphnis and Chloe* (200 AD), pastoral love story of innocence and naiveté



THE SOUND OF WAVES

- Find two examples of pastoral influences in the text and comment on their realism/idealism - are there times when the text alludes to darker themes?

- "The depiction of nature, traditional architecture, the shrine, and the traditional occupation of fisherman combine to make this a stock scene from virtually any classical East Asian painting."

(Napier, 1991)



HOMework

- Read to p. 94