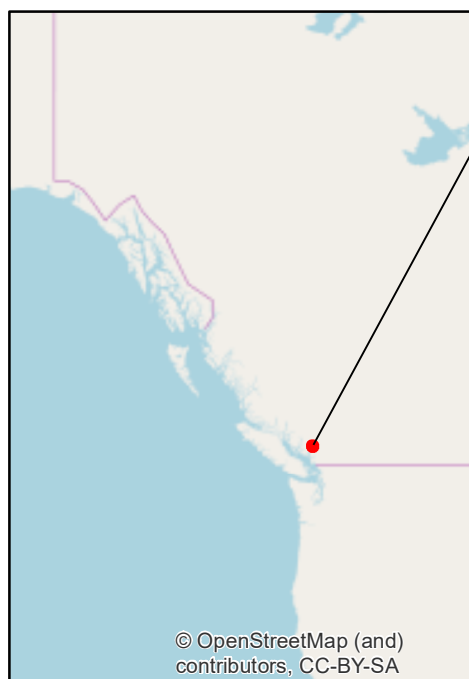
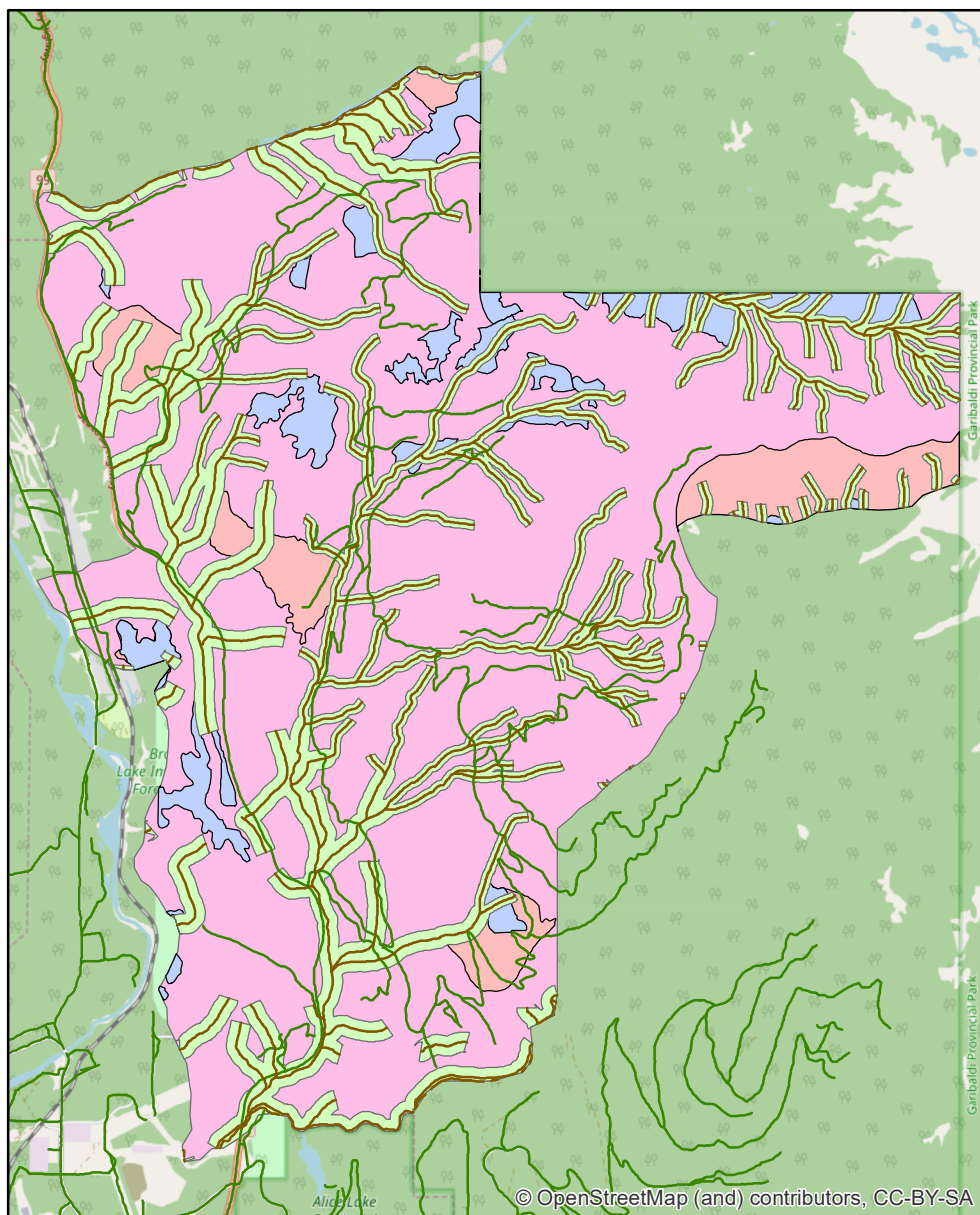
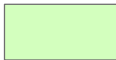

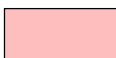


Environmental Impact Assessment Map




Data retrieved from DataBC, NRCan
National Topographical Sheet Data, &
HectaresBC.Map produced by Jasmin
Senghera, October 2019.



Ecologically Sensitive Areas

-  Fish habitat riparian management zones
-  Old growth areas
-  Ungulate habitat areas

Geographic Features

-  Rivers
-  Roads
-  Proposed project area

0 625 1,250 2,500 Kilometers

