

## Systems of Equations

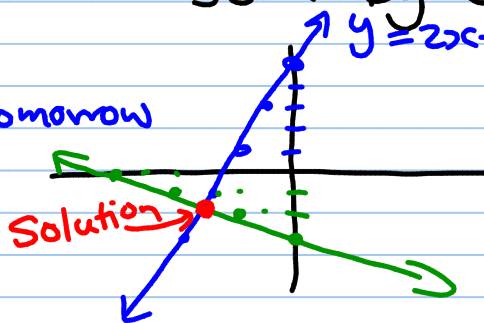
→ is when you are trying to find a solution that works in more than one equation at once

Linear Systems in Gr 10:

$$\begin{aligned} y &= 2x + 5 \\ y &= -\frac{1}{2}x - 3 \end{aligned}$$

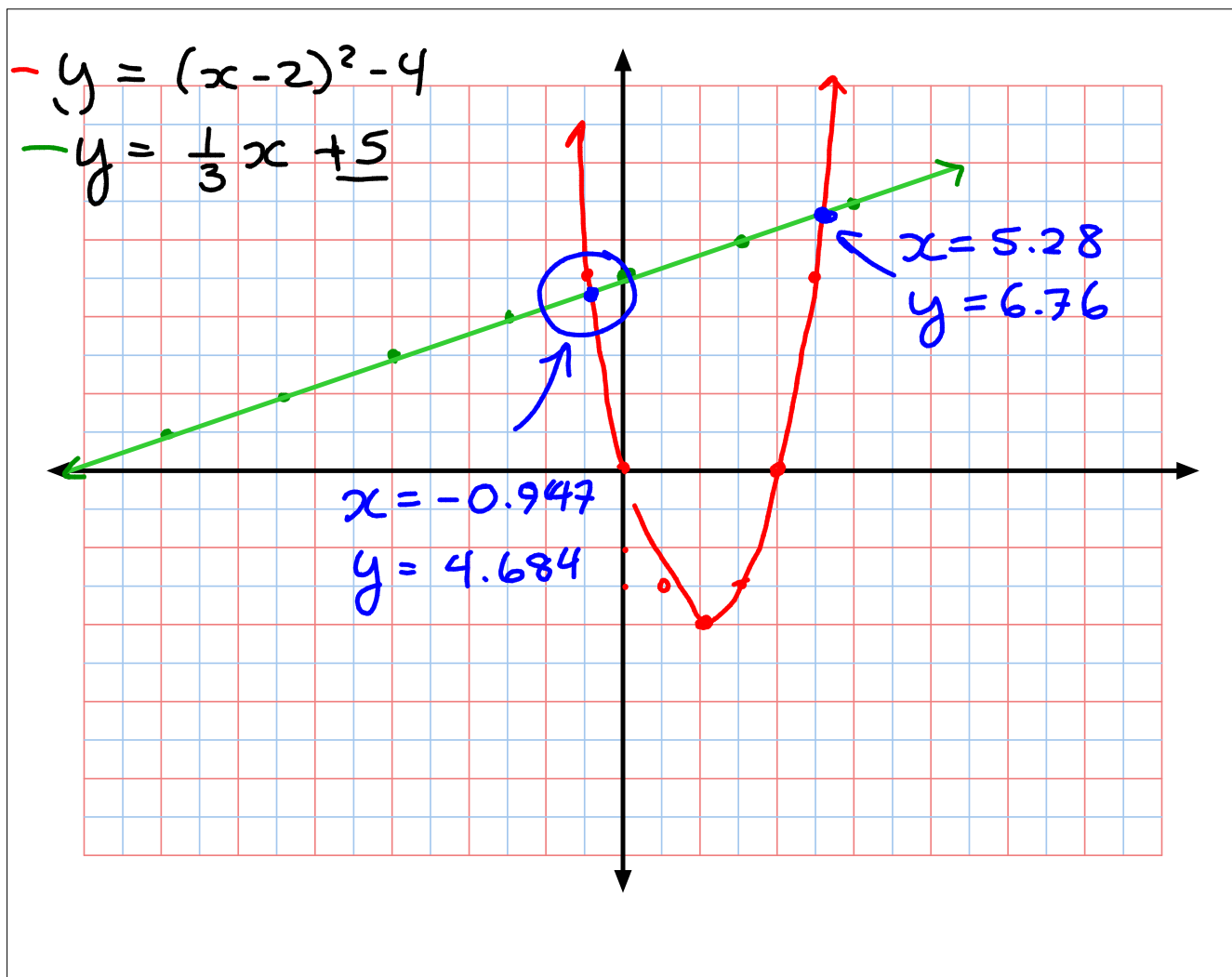
① Method 1 was solve by Graphing:

- Substitution } tomorrow
- Elimination }



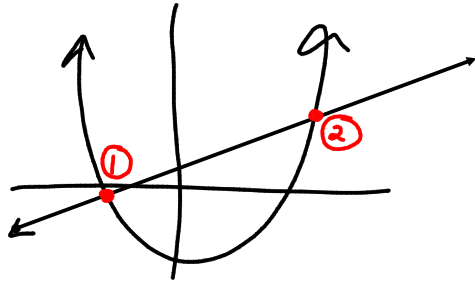
In grade 11:

$$\begin{aligned} y &= (x - 2)^2 - 4 \\ y &= \frac{1}{3}x + 5 \end{aligned}$$

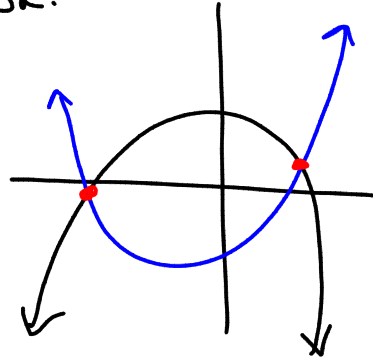


# Types of Solutions

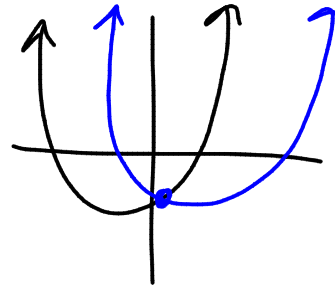
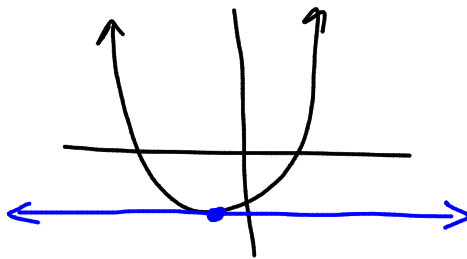
① 2 solutions:



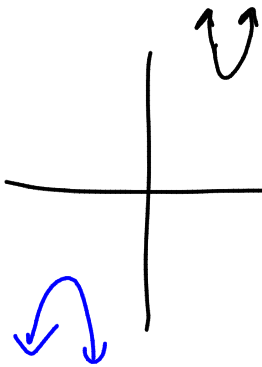
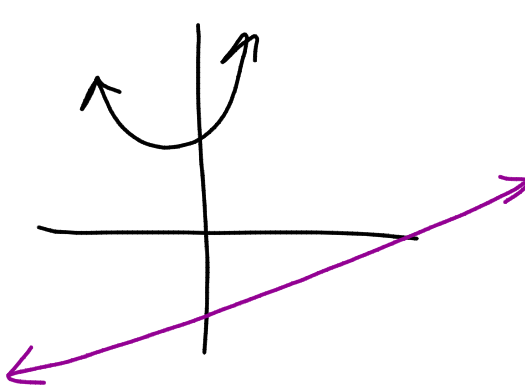
OR:



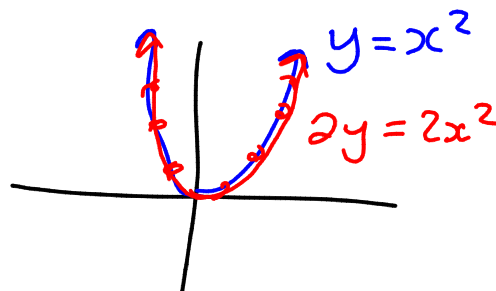
② 1 solution



③ No Solution



④ Infinite:



Assignment:

8.1 pg. 435 # 1-6, 8