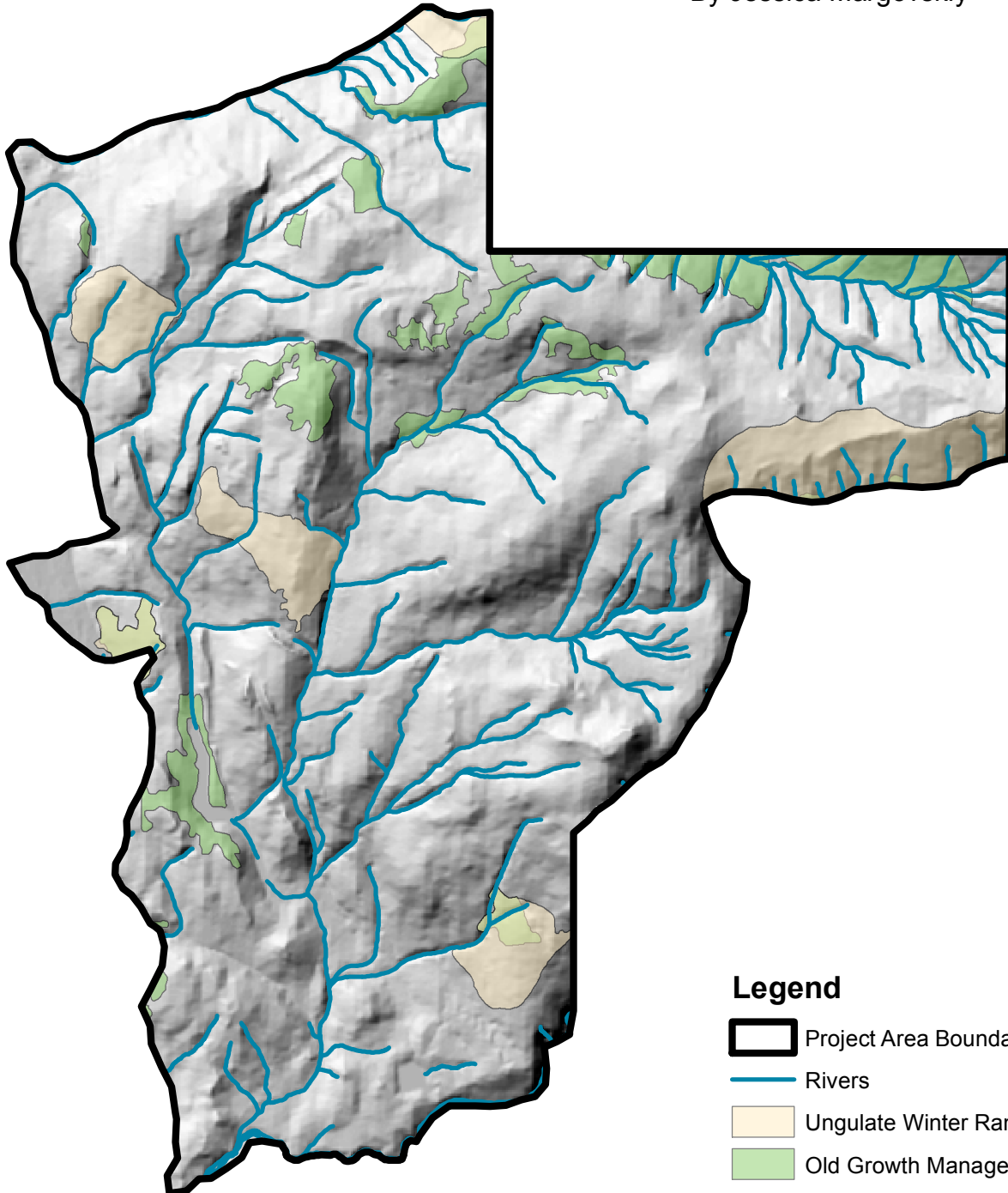


Squamish Ski Resort: Hillshade of Project Area with Rivers, Old Growth and Ungulate Areas




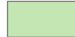
By Jessica Margovskiy





0 470 940 1,880 2,820 3,760
Meters

Coordinate System: NAD 1983 UTM Zone 10N
Projection: Transverse Mercator
Datum: North American 1983
Units: Meter
Data: DataBC

Legend

-  Project Area Boundary
-  Rivers
-  Ungulate Winter Range
-  Old Growth Management Areas

Hillshade

- Value**
-  High : 254
 -  Low : 0