

# Potential Zoning for New Fire Hall in City of Chilliwack

## Five Potential Locations for a New Fire Hall

Geob 270

Ellika Cairns  
Stephanie Grondin  
Danielle Main  
Jessica Margovskiy

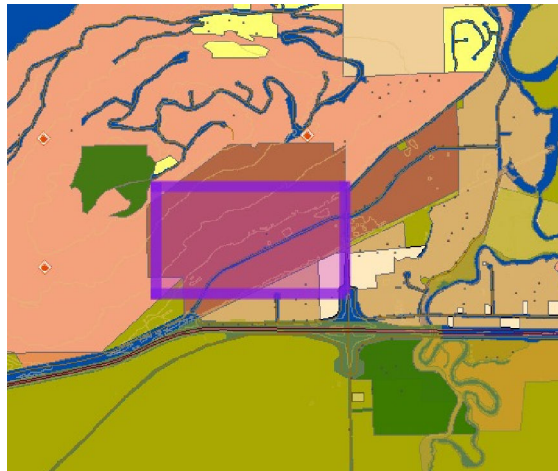


Figure 1

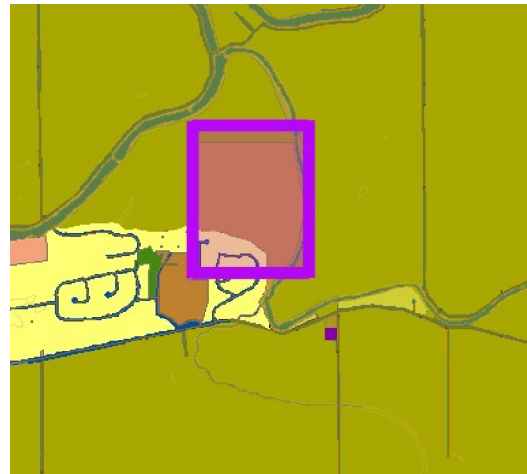


Figure 2

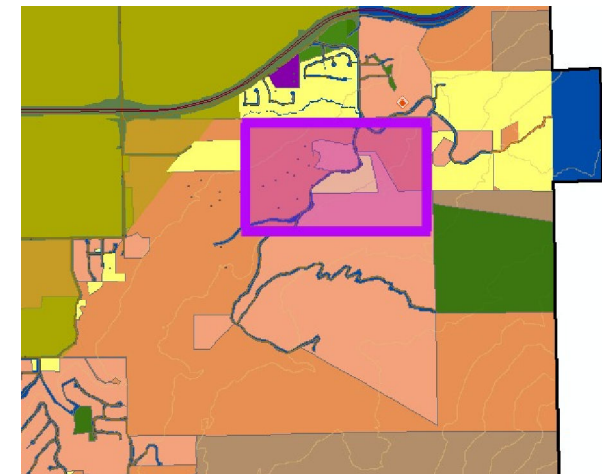


Figure 3

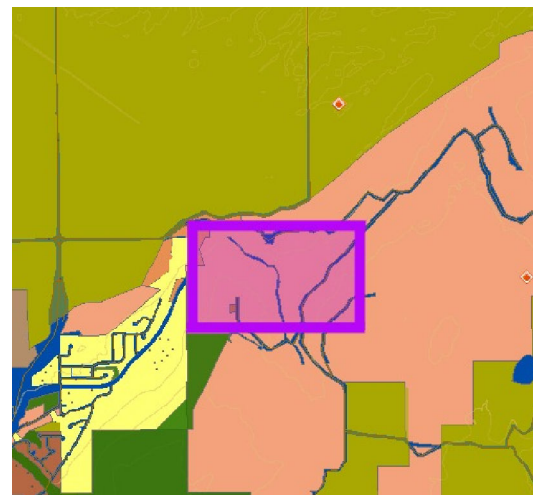


Figure 4

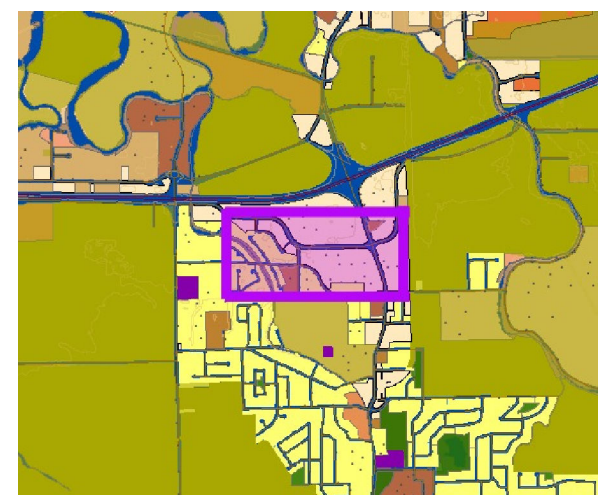
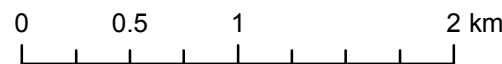


Figure 5

### Legend

- |                            |                 |
|----------------------------|-----------------|
| Forest Fire Incident       | <b>Zoning</b>   |
| Fire Halls                 | <b>ZONE</b>     |
| Fire Hydrants              | Agricultural    |
| Highway 1                  | Airport         |
| Roads                      | Commercial      |
| City Parks                 | Development     |
| Agriculture Land Reserve   | Industrial      |
| Fraser River               | Institutional   |
| 100m Contour Lines (Index) | Limited Reserve |
| City Boundary              | Public Reserve  |
| Potential Fire Hall Zones  | Residential     |
|                            | Rural           |
|                            | Special Reserve |



Coordinate System: NAD 1983 UTM Zone 10N  
Projection: Transverse Mercator  
Datum: North American 1983  
Source: Open Data Catalogue  
Units: Meter