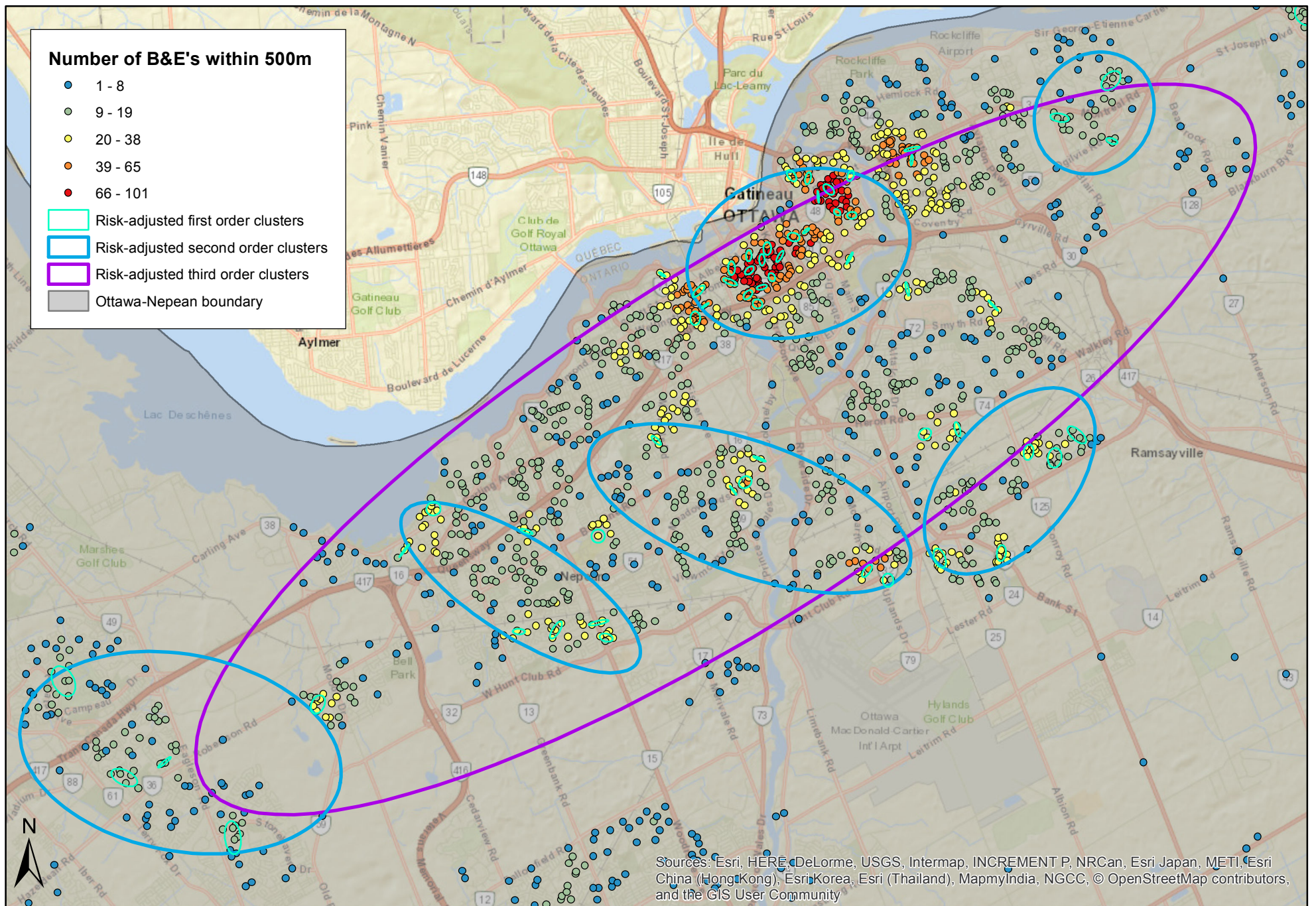


Distribution of Break & Enter Crimes in Ottawa, ON 2005-2006

(Looking at Hot Spots and Areas with Relative-Risk)



Sources: Esri, HERE, DeLorme, USGS, Intermap, INCREMENT P, NRCan, Esri Japan, METI, Esri China (Hong Kong), Esri Korea, Esri (Thailand), MapmyIndia, NGCC, © OpenStreetMap contributors, and the GIS User Community

0 1.25 2.5 5 7.5 10 Kilometers

Map by Jessica Hak Hepburn 2017
Data retrieved from Ottawa Police Department, Statistics Canada, Open Street Map, and DMTI