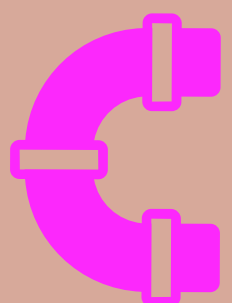


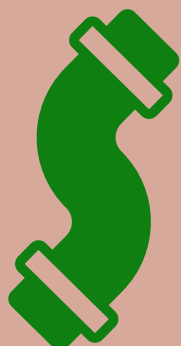
FALSE CREEK WATERSHED

Historically, False Creek has been dominated by industry, like sawmills and cement plants. After Expo '86 and the 2010 Winter Olympics, the surrounding urban areas have been revitalized to include arts and culture hub Granville Island, the hip Yaletown district, and the dense Olympic Village neighbourhood.



Combined Sanitary & Stormwater

- raw sewage (flows to treatment plant)
- rainfall from storm drains
- household waste water



Stormwater Pipes

- rainfall from storm

The place where a pipe empties into a lake or ocean is called an outfall—there are 14 of them in False Creek.

Vancouver receives more than 1100 mm of rainfall each year. Surface pollutants are washed into the pipes by rainwater, and are deposited into the waters of the creek. Everybody who lives or works in the False Creek watershed has an effect on the water quality.

20% of all Vancouverites live within the False Creek watershed. That is over 130,000 people.!

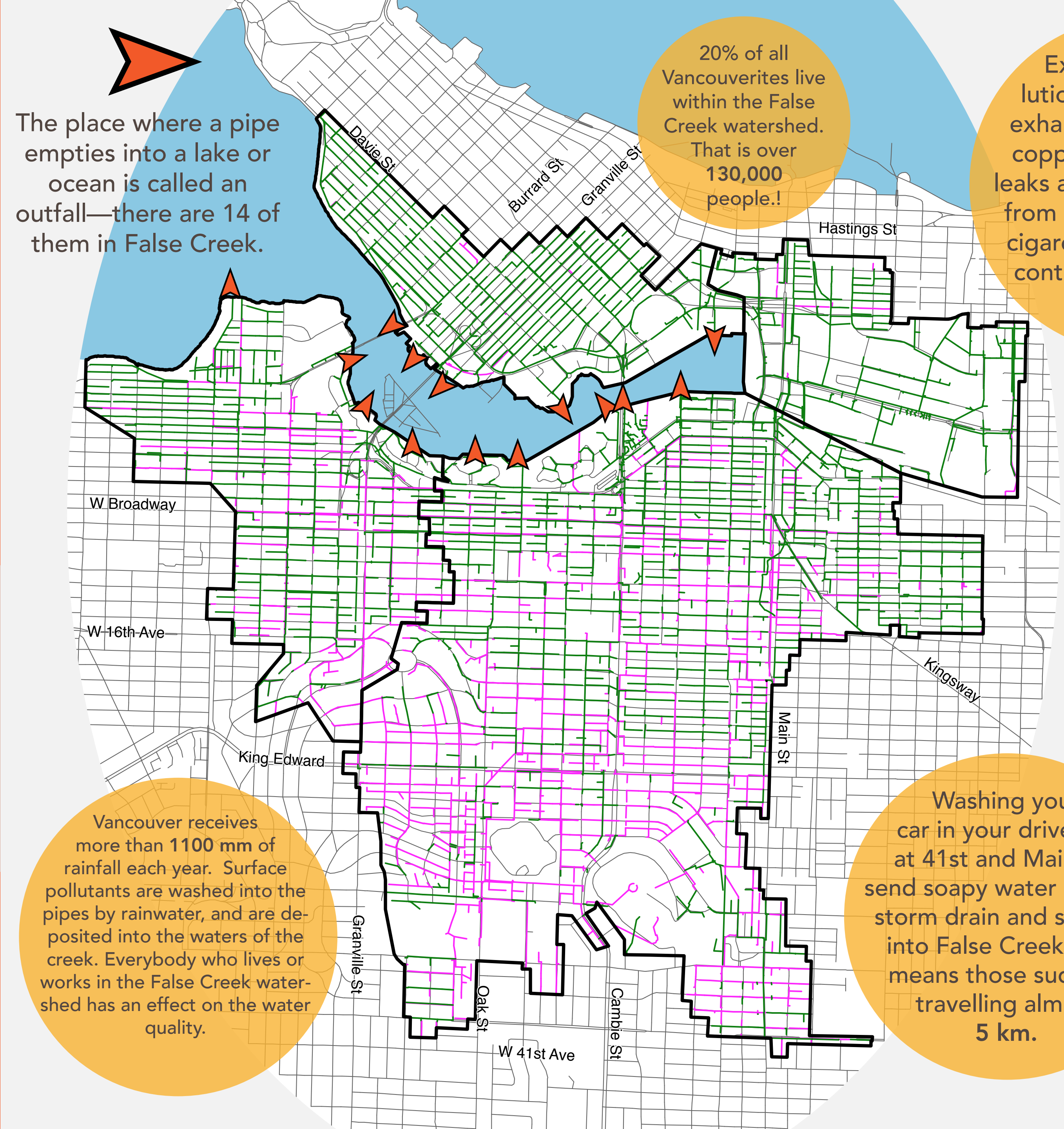
Examples of pollution include vehicle exhaust and wear from copper disc brakes, oil leaks and spills, chemicals from lawn maintenance, cigarette butts, and uncontrolled commercial runoff.

Over 1000 boats moor in False Creek each year. Most moor in a marina, but some are in open anchorage. Dumping raw sewage is illegal, but the city still fights with liveaboards and pleasure boaters who break these laws and dump waste directly into the water.

Washing your car in your driveway at 41st and Main will send soapy water into the storm drain and straight into False Creek! That means those suds are travelling almost 5 km.



This map highlights four of Vancouver's sewer catchment areas. There are a total of 19 throughout the city.



SOURCES
<http://www12.statcan.gc.ca/census-recensement/2016/geo/geosearch-georecherche/index-eng.cfm>
<http://council.vancouver.ca/20170502/documents/a2.pdf>
<https://vancouver.weatherstats.ca/metrics/precipitation.html>

