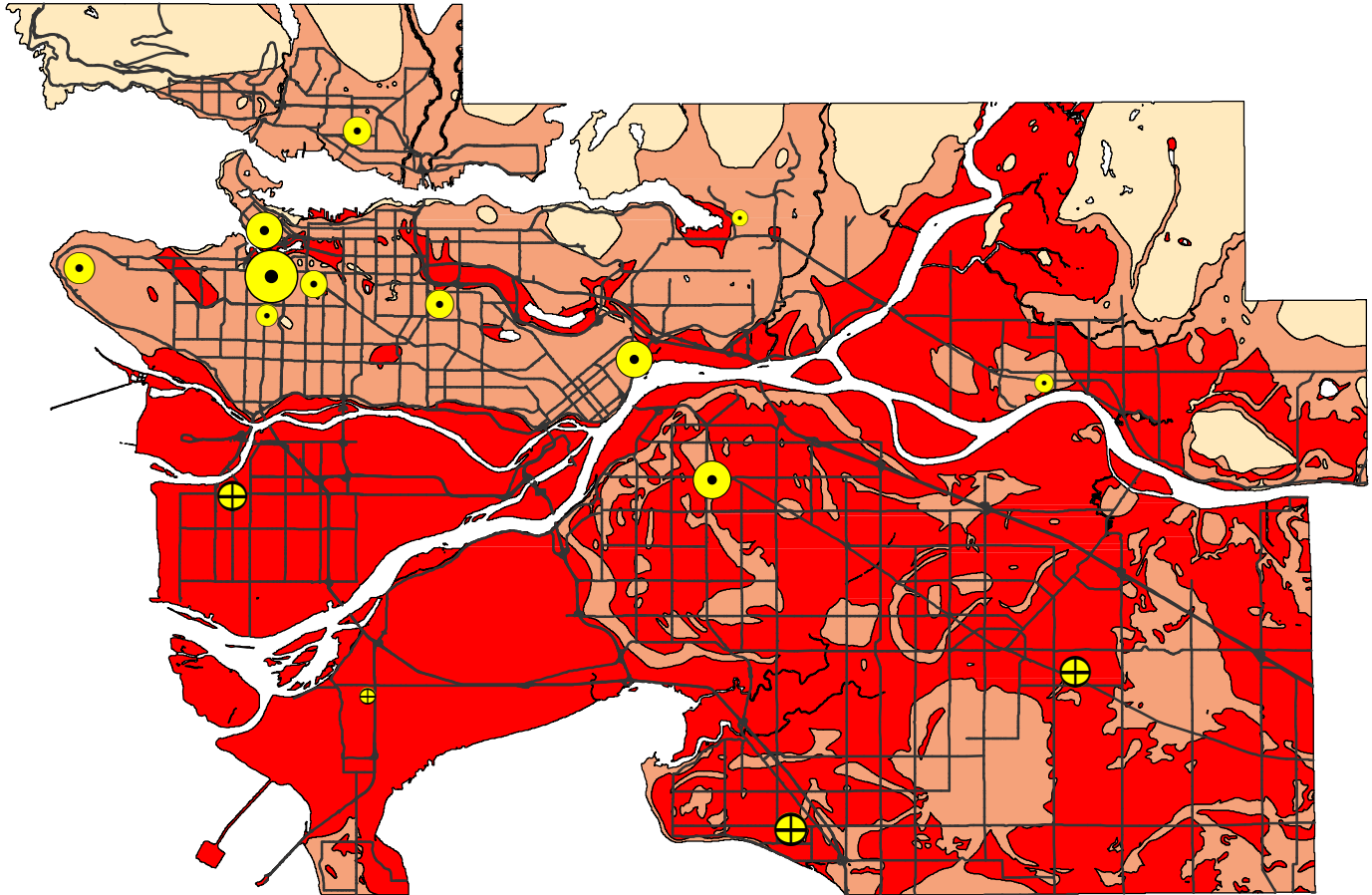


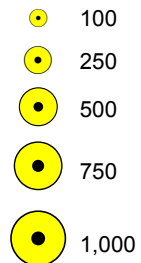
Liquefaction Danger Zones in Greater Vancouver

A representation of hospitals within moderate to high liquefaction zones and neighboring hospitals within low liquefaction zones



Hospitals in Low Danger Areas

Number of Beds



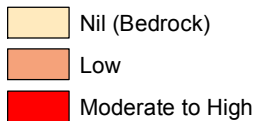
Hospitals in Moderate to High Danger Areas

Number of Beds



— Roads

Liquefaction Danger Levels



Population in Low Danger Areas: 1,288,428
Population in Moderate to High Danger Areas: 891,768
Population in Nil Areas: 86,402

