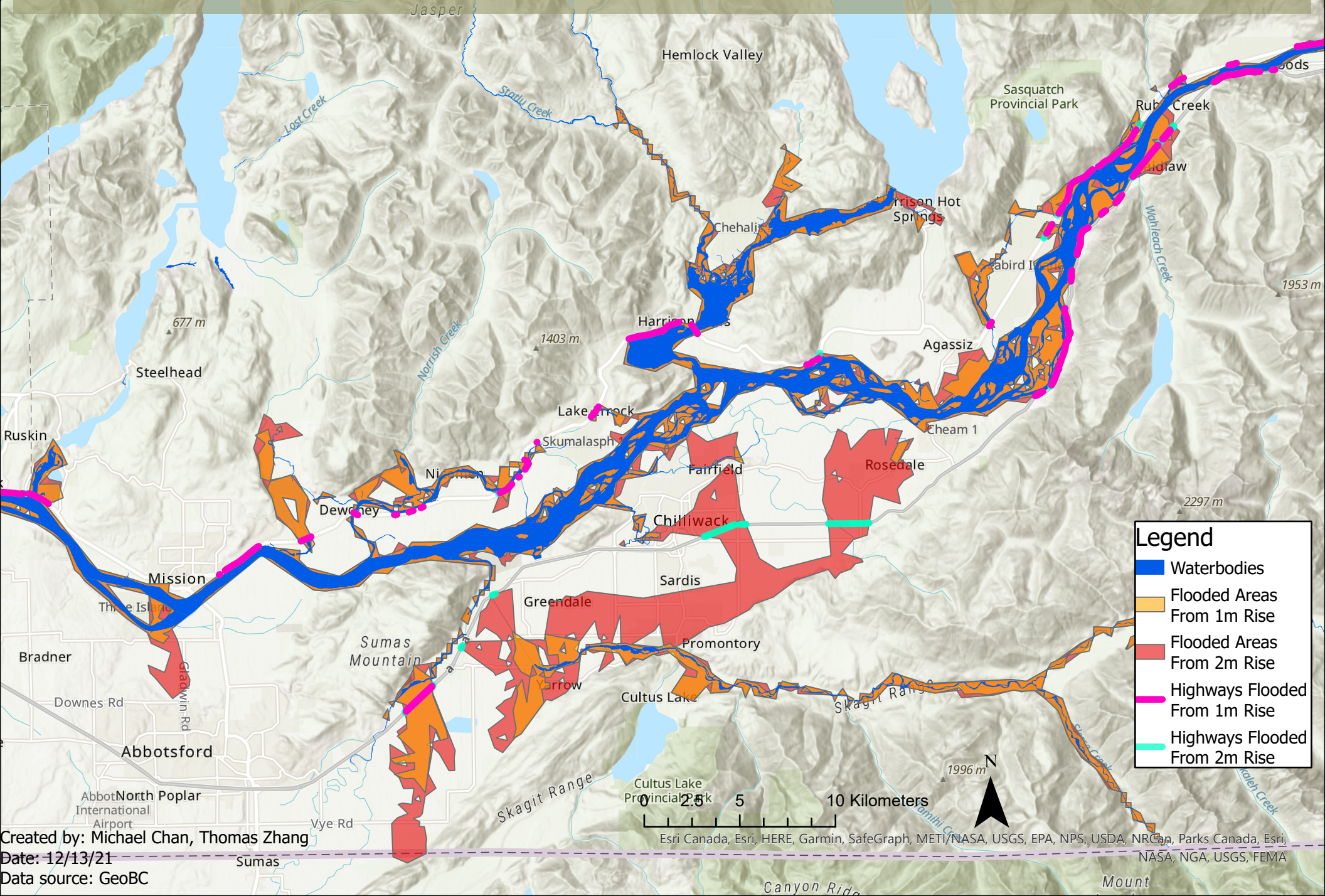


# Potentially Flooded Highways, and Land in the Eastern Portion of the Fraser River due to 1m and 2m Increase in Nearby Waterbody Levels



Created by: Michael Chan, Thomas Zhang

Date: 12/13/21

Data source: GeoBC

Esri Canada, Esri, HERE, Garmin, SafeGraph, METI/NASA, USGS, EPA, NPS, USDA, NRCan, Parks Canada, Esri, NASA, NGA, USGS, FEMA