

Introduction To Technical Analysis

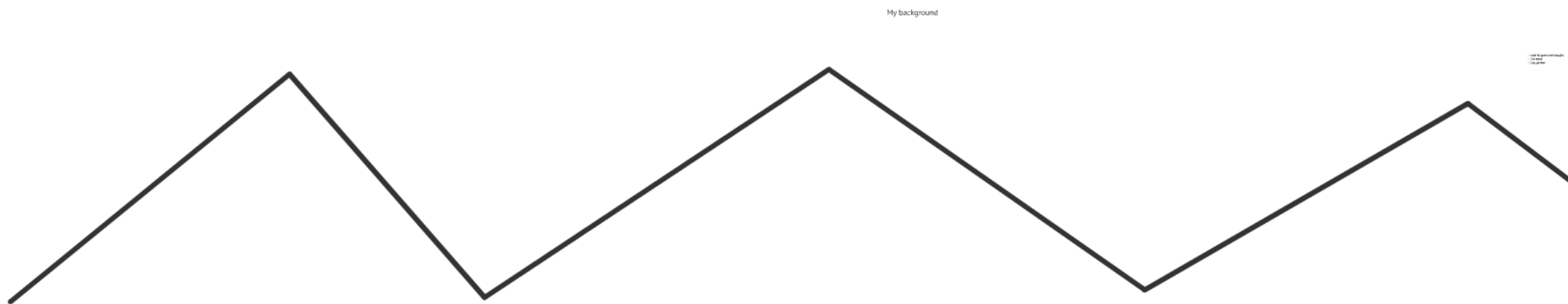
My background

Trading Trends

- **Look for peaks and troughs**
- **2 to trend**
- **3 to confirm**

Rectangles

Te



My background

My background

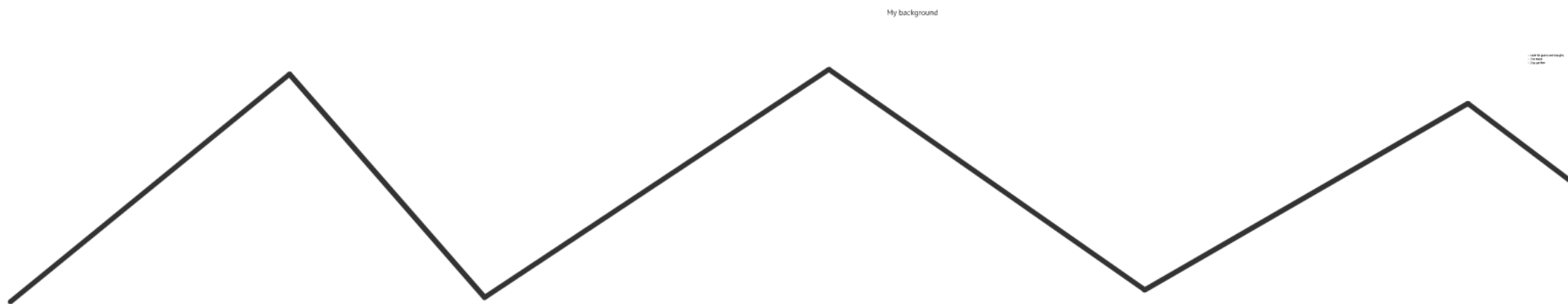
Trading Trends

Introduction To Technical Analysis

- **continuation pattern**
- **establish support**
- **establish resistance**

- **go long on troughs**
- **go short on peaks**

Te



My background

My background

Trading Trends

Introduction To Technical Analysis

ZW Z2 [10] - WHEAT

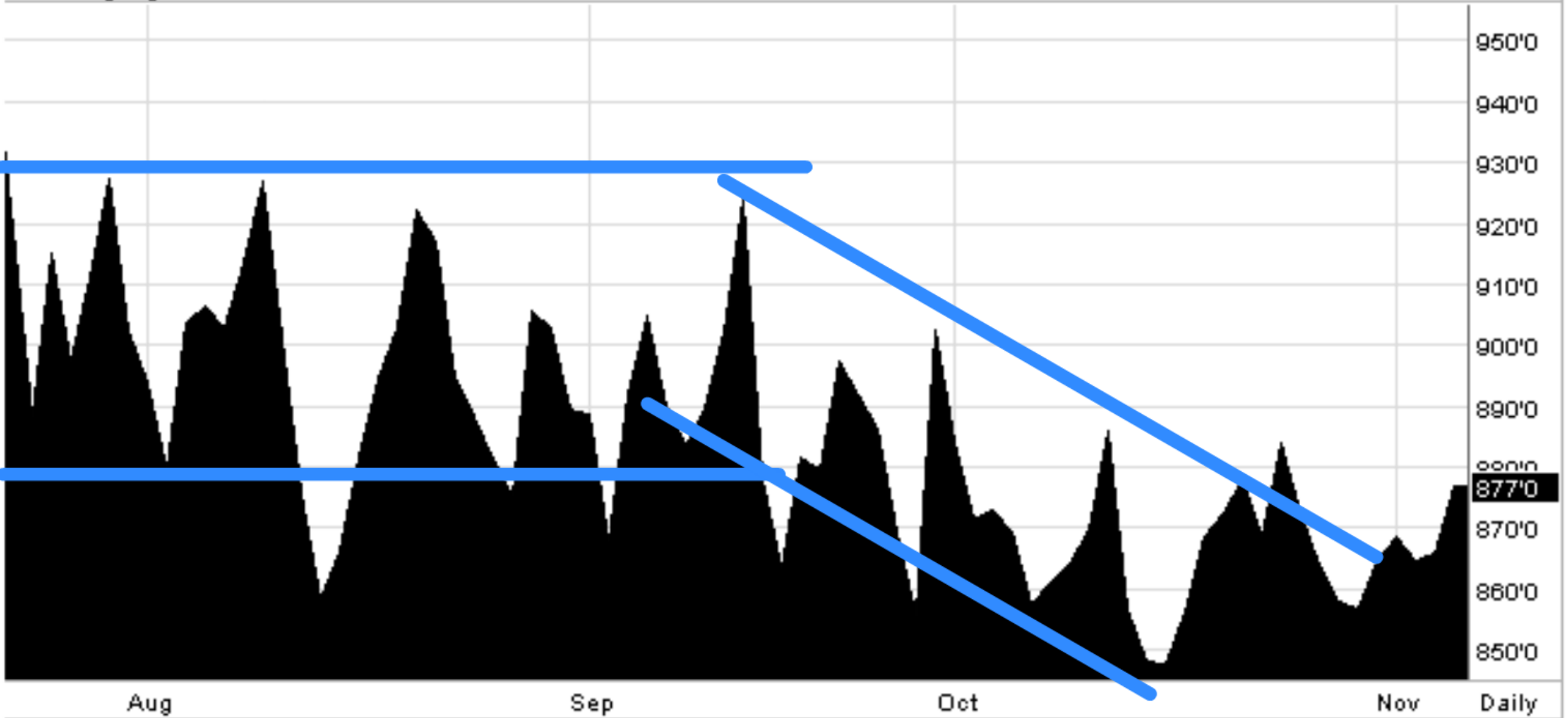
LAST: 877'0

CHANGE: 11'0

HIGH: 879'6

LOW: 867'0

11/6/2012



ZC Z2 [10] - CORN

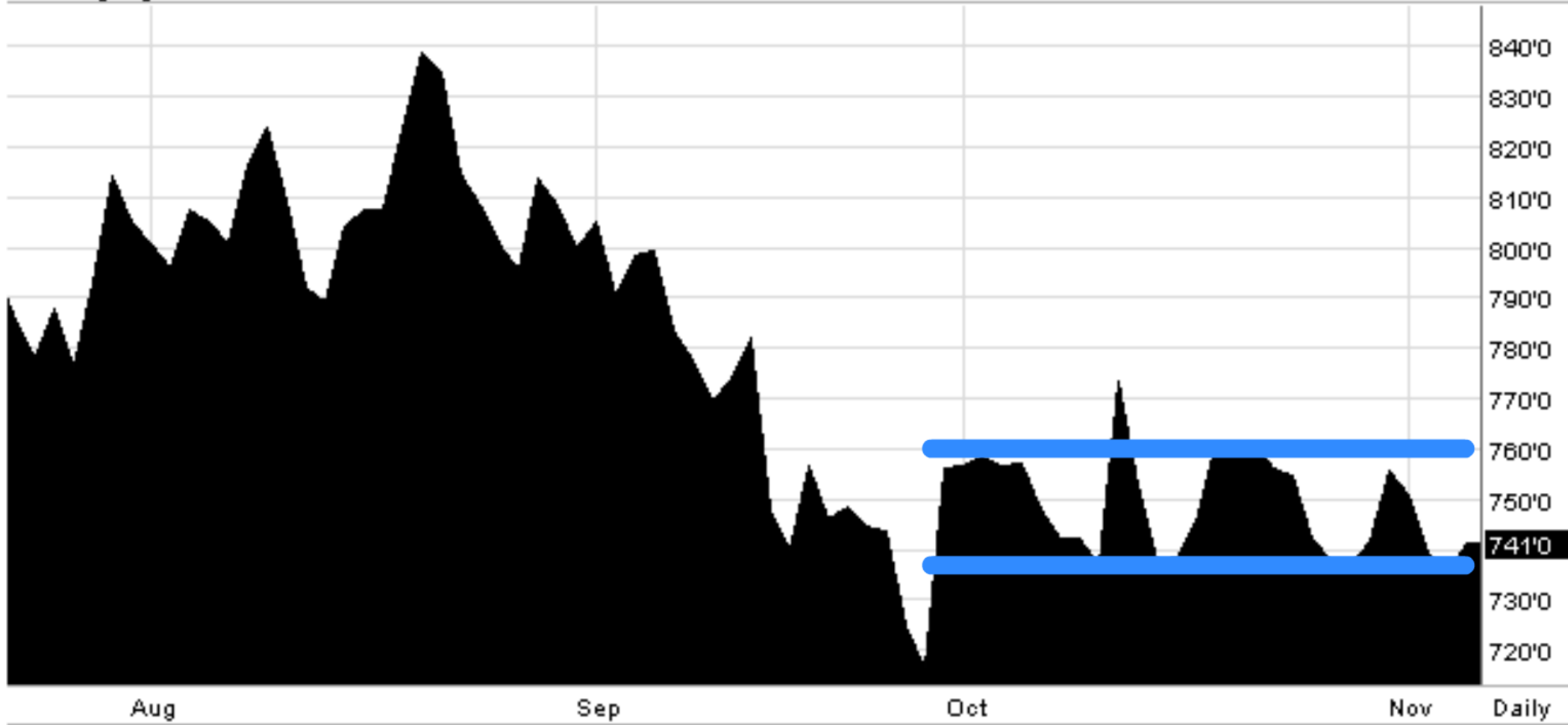
LAST: 741'0

CHANGE: 5'4

HIGH: 741'4

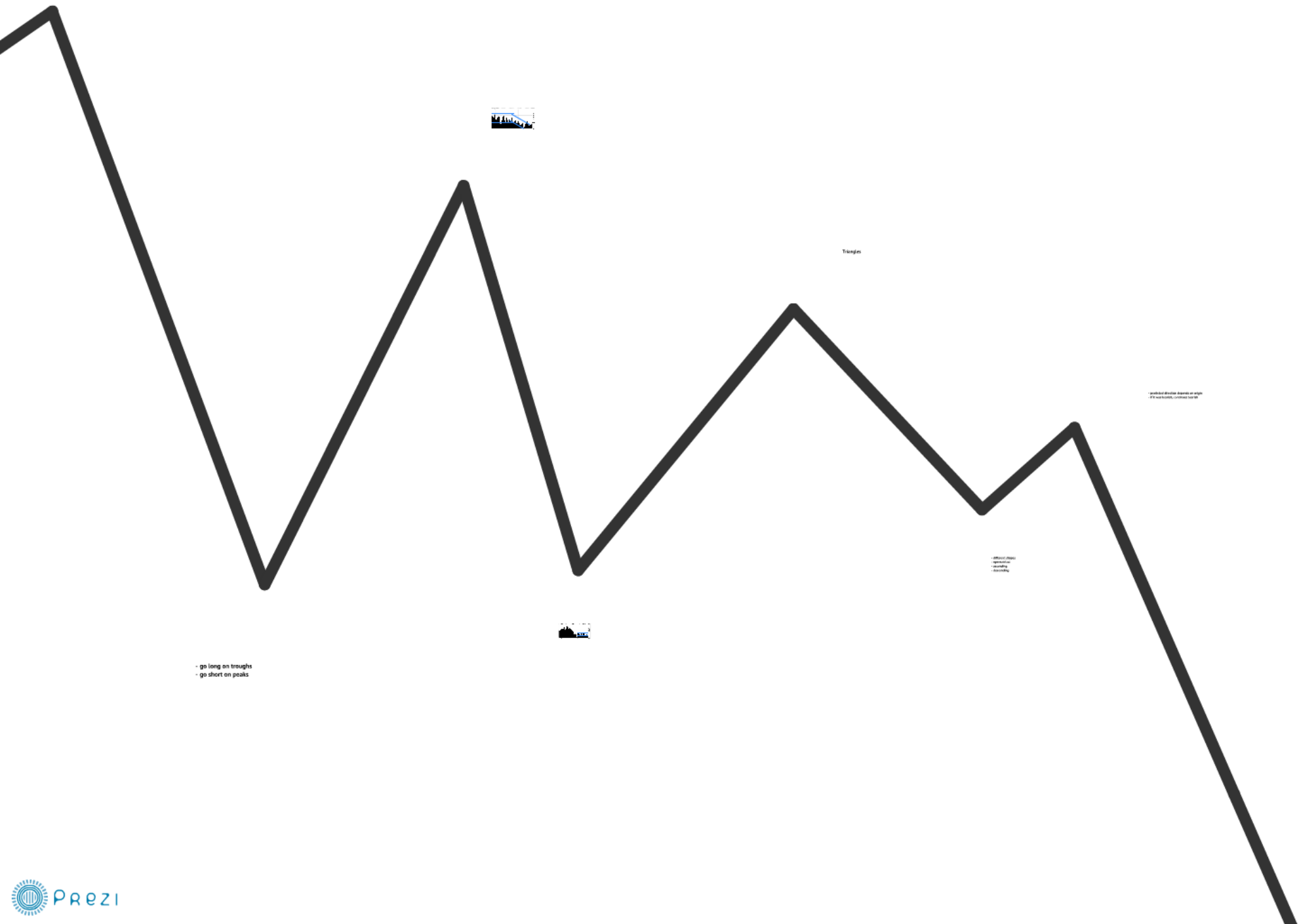
LOW: 735'4

11/6/2012



Triangles

- establish support
- establish resistance



- **different shapes**
- **symmetrical**
- **ascending**
- **descending**

- establish support
- establish resistance



Troughs

Established Support appears on signs
if it was broken, continued buy in

- go long on troughs
- go short on peaks



- go long on troughs
- go short on peaks

- **predicted direction depends on origin**
- **if it was bearish, continues bearish**

Descending

- **Level bottom**
- **Descending top**
- **Bearish**

Ascending

- Level top
- Ascending bottom
- Bullish

ZS F3 [10] - SOYBEANS

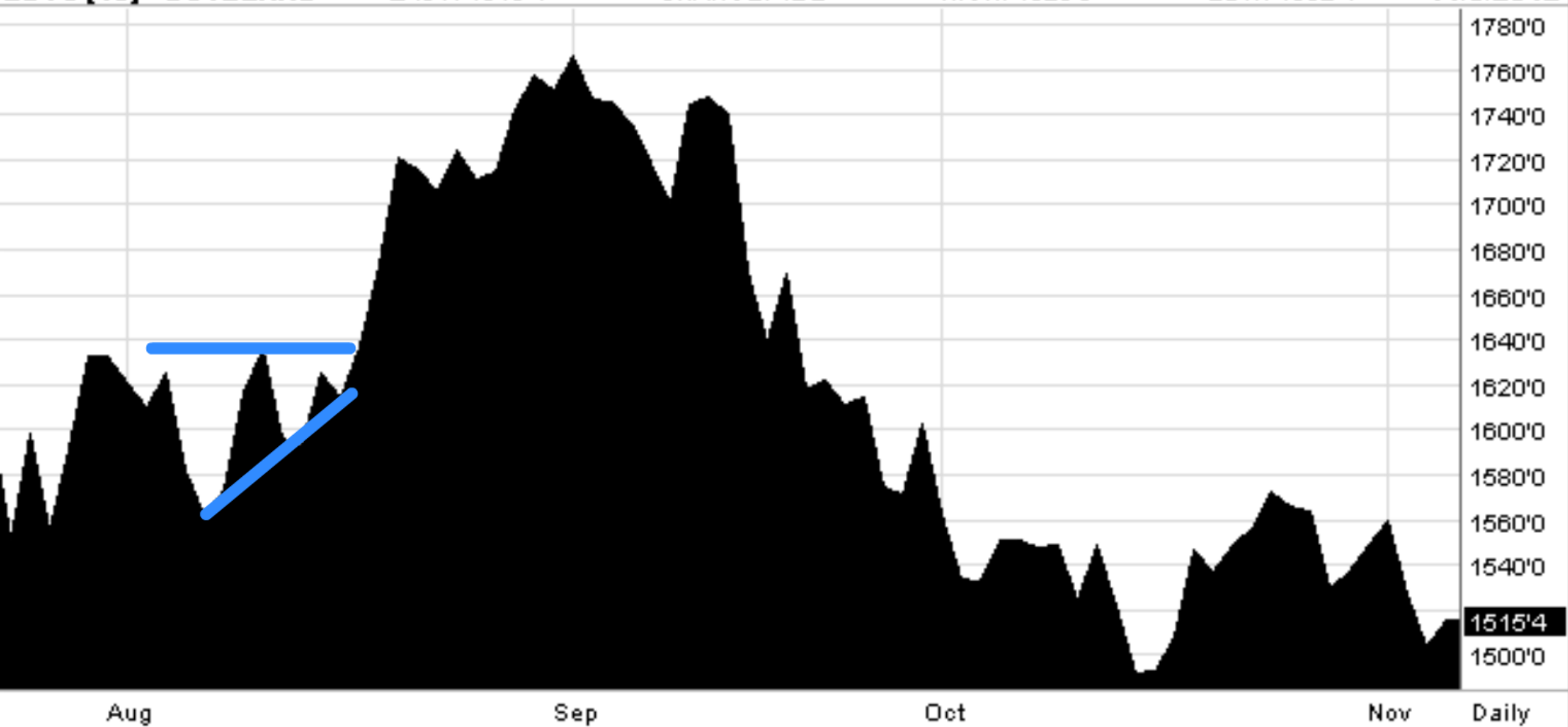
LAST: 1515'4

CHANGE: 12'2

HIGH: 1523'0

LOW: 1502'4

11/6/2012



ZC Z2 [10] - CORN

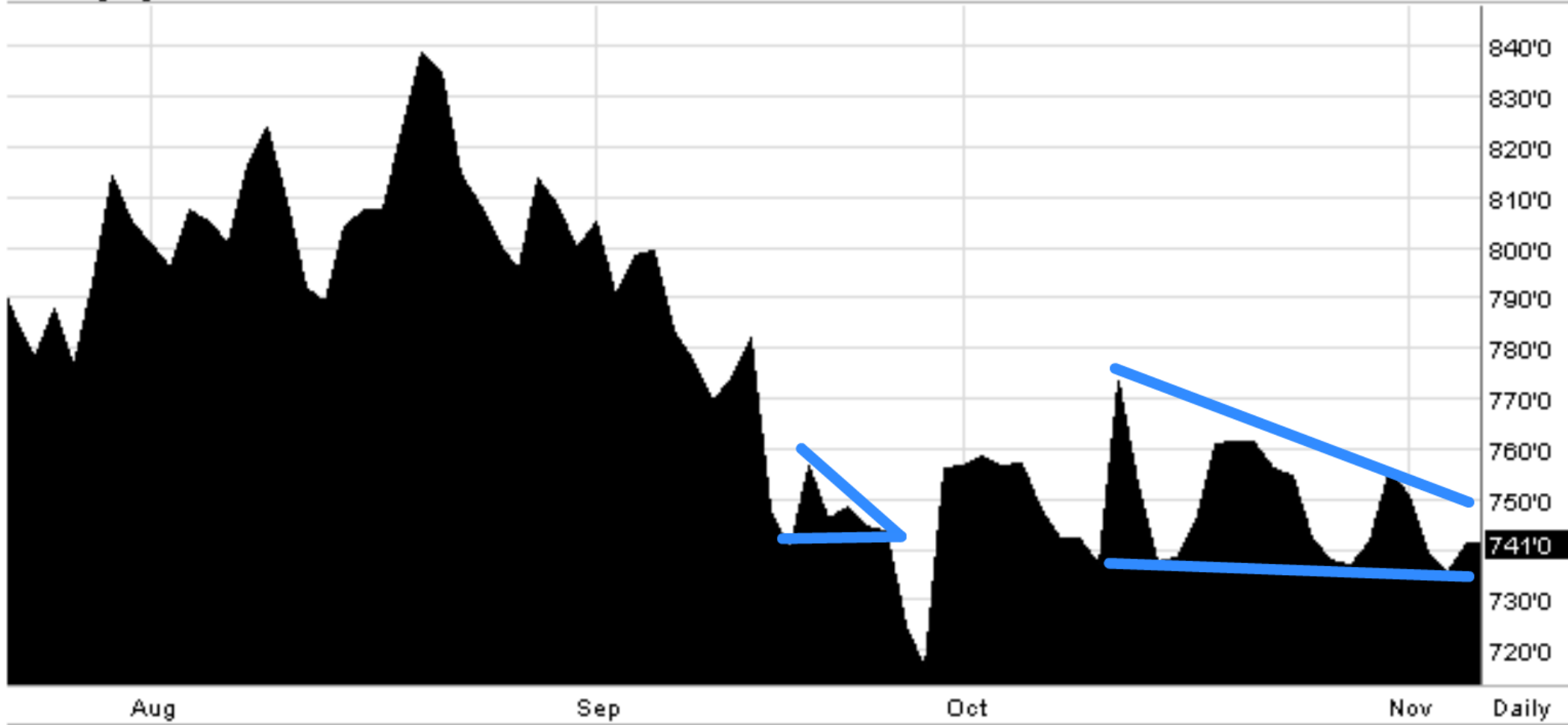
LAST: 741'0

CHANGE: 5'4

HIGH: 741'4

LOW: 735'4

11/6/2012



Wedges

- wedges are triangles that point in a direction
- they go towards the opposite direction that the wedge is pointed

Head and Shoulders



- trend reversal pattern up or down
- neck establish resistance or support
- shoulder breaks through
- head breaks more
- final shoulder breaks
- changes direction of original

ZS F3 [10] - SOYBEANS

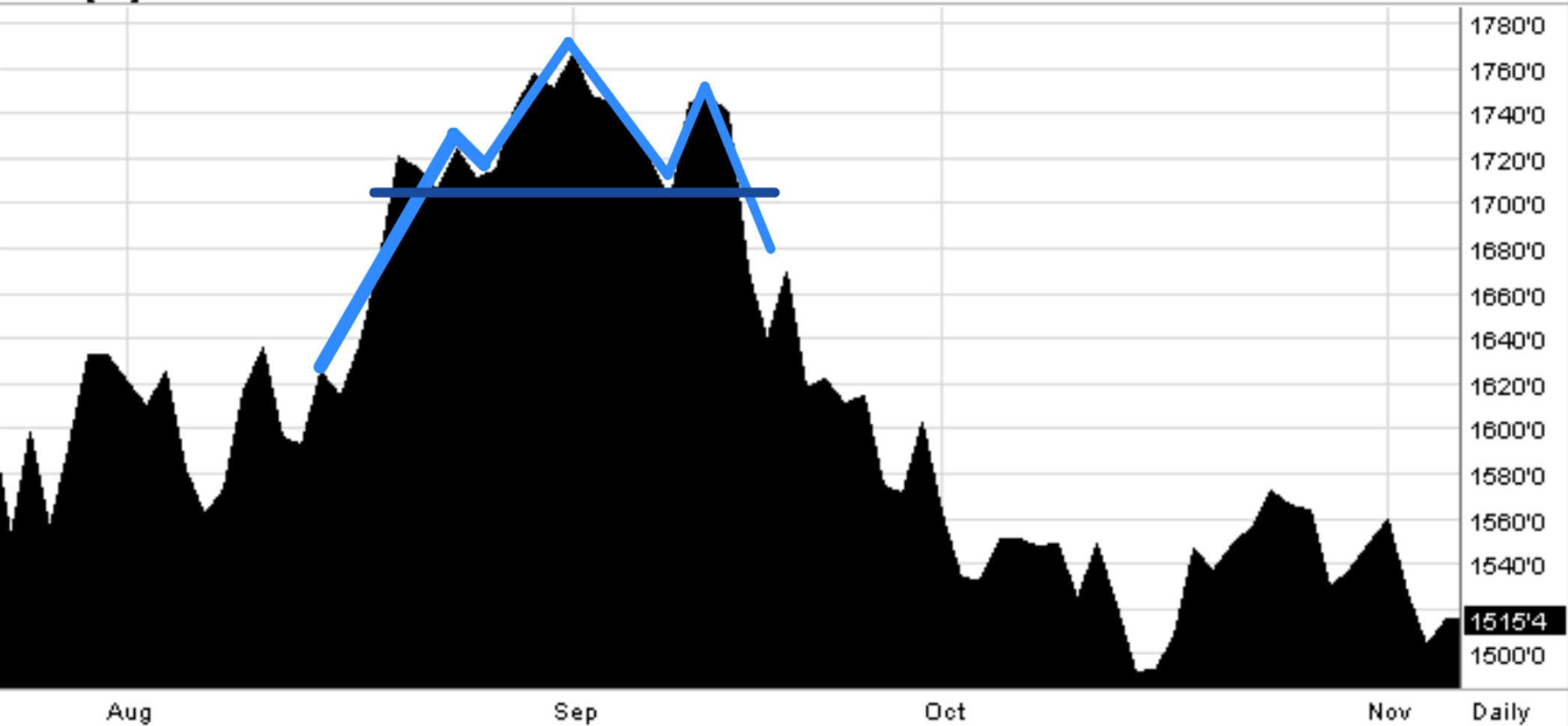
LAST: 1515'4

CHANGE: 12'2

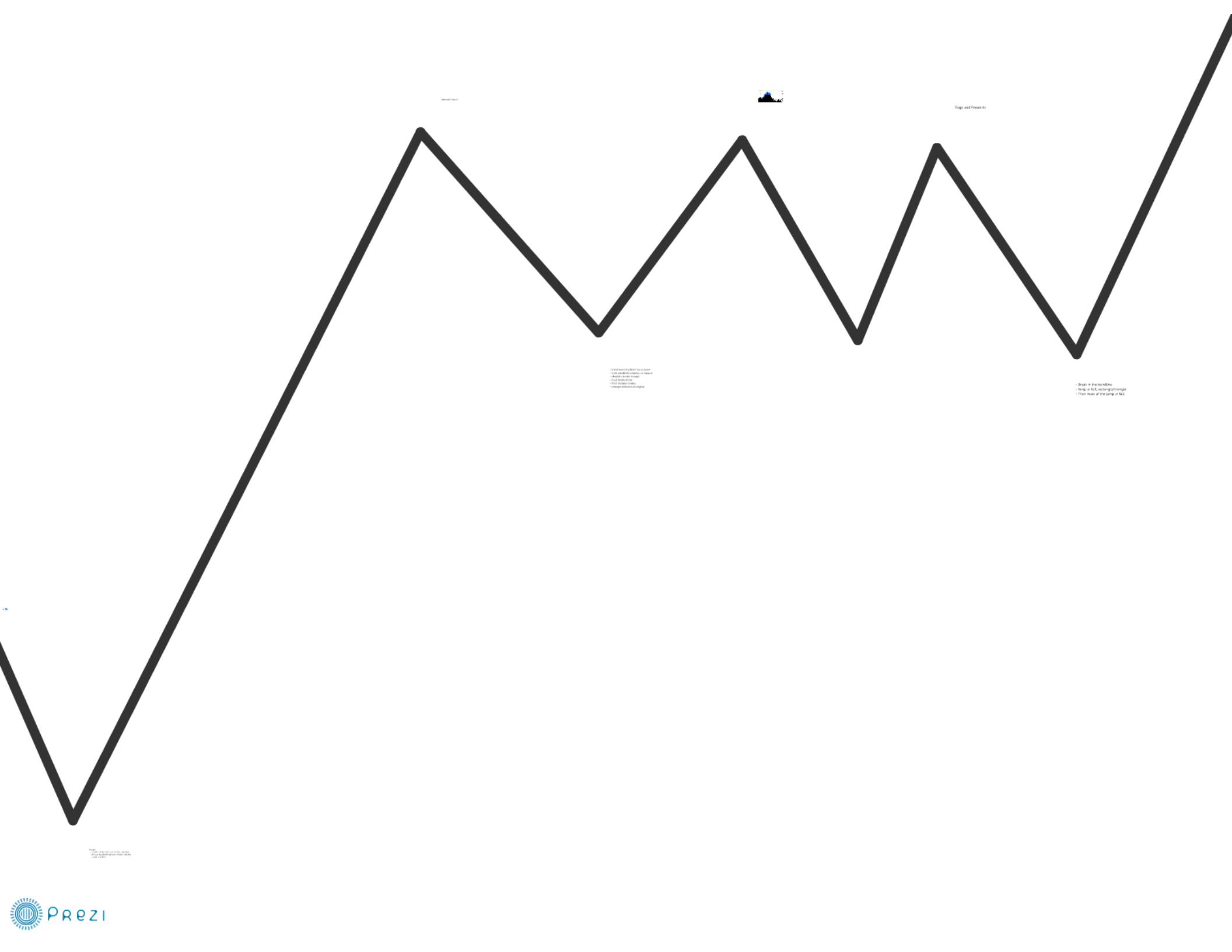
HIGH: 1523'0

LOW: 1502'4

11/6/2012



Flags and Pennants



© 2014 Prezi Inc. All rights reserved. Prezi is a registered trademark of Prezi Inc. in the United States and other countries. Prezi Inc. is an Equal Opportunity Employer. Prezi Inc. is a 501(c)(3) non-profit organization. Prezi Inc. is a 501(c)(3) non-profit organization.

- Break in the trendline
- Jump or fall, rectangle/triangle
- Then more of the jump or fall

ZS F3 [10] - SOYBEANS

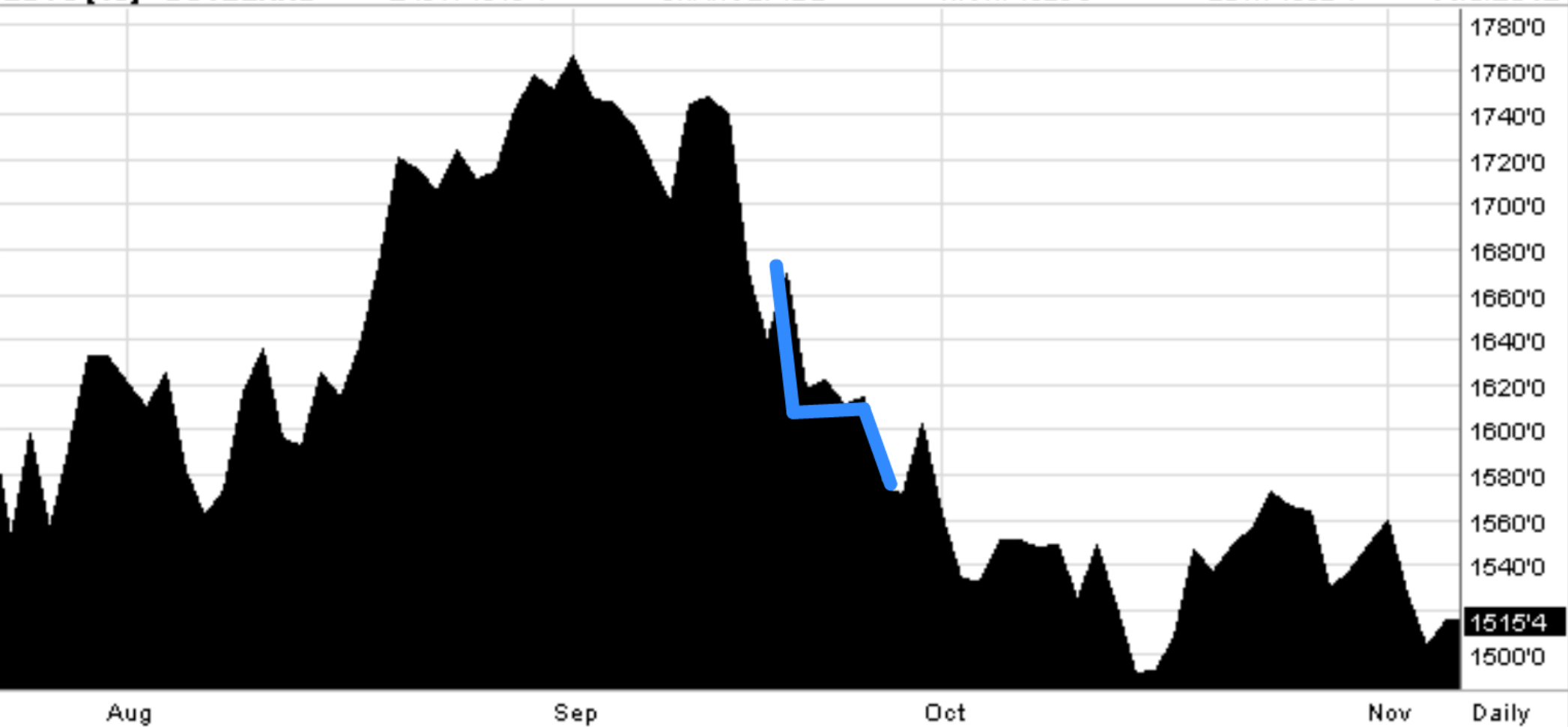
LAST: 1515'4

CHANGE: 12'2

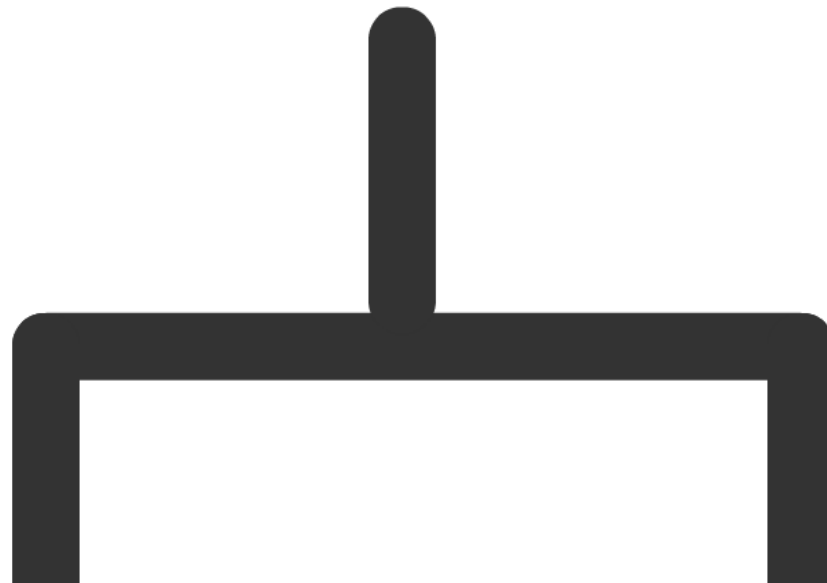
HIGH: 1523'0

LOW: 1502'4

11/6/2012



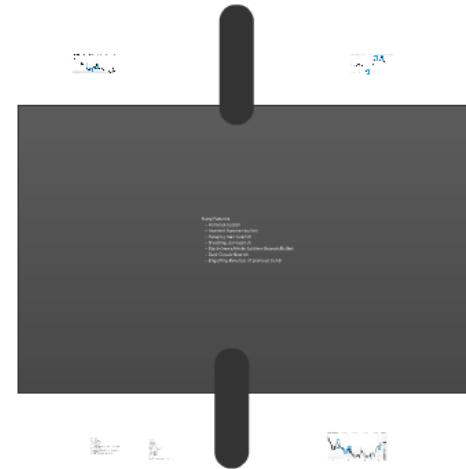
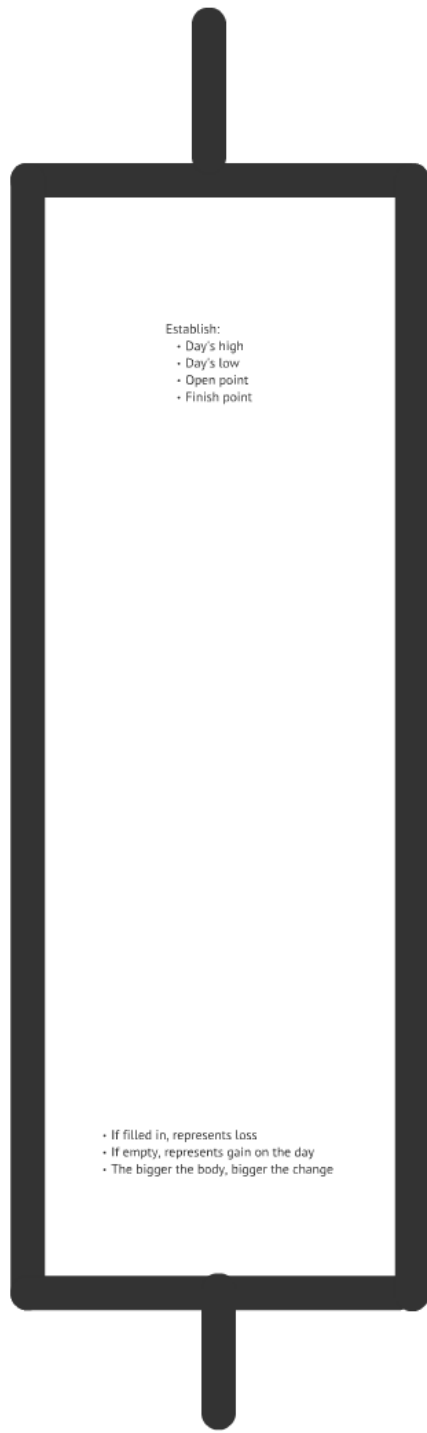
Candlestick Analysis



Establish:

- Day's high
- Day's low
- Open point
- Finish point

- If filled in, represents loss
- If empty, represents gain on the day
- The bigger the body, bigger the change



Many Patterns

- Hammer-bullish
- Inverted Hammer-bullish
- Hanging man-bearish
- Shooting star-bearish
- Black Crows/White Soldiers-Bearish/Bullish
- Dark Clouds-Bearish
- Engulfing-Reversal of previous trend

ZC Z3 [10] - CORN

LAST: 449'2

CHANGE: 0'0

HIGH: 449'6

LOW: 447'6

10/8/2013



CME Group

ZS X3 [10] - SOYBEANS

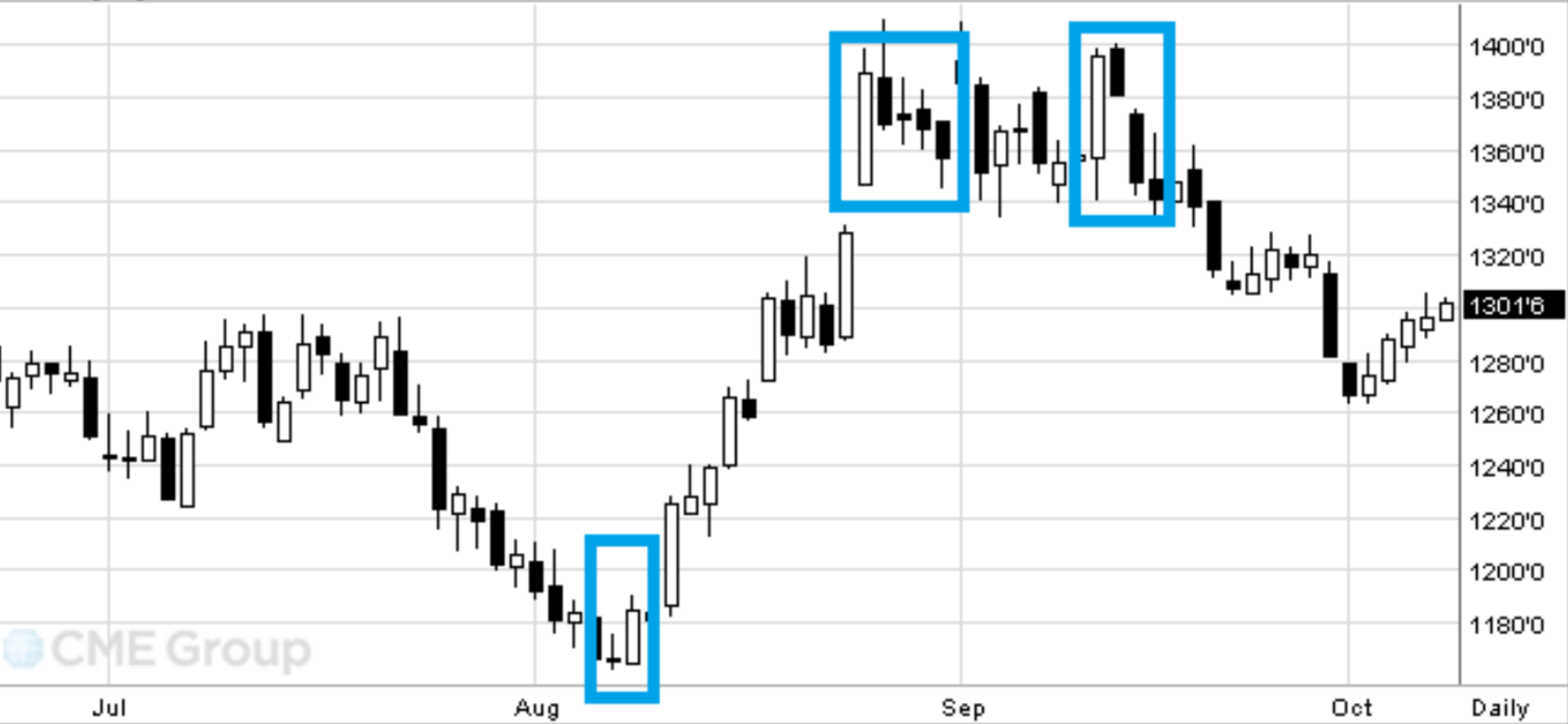
LAST: 1301'6

CHANGE: 5'2

HIGH: 1303'6

LOW: 1296'2

10/8/2013



CME Group

ZW Z3 [10] - WHEAT

LAST: 696'6

CHANGE: 2'0

HIGH: 697'2

LOW: 693'2

10/8/2013



CME Group

Twitter:

@ajpangil

@Agrimoney

@leanhog

@5thwave_tcronin

@IndianaGrainCo

@ArlanFF101

@Cornfutures

@jasonlbritt

Email:

andrewpangilinan@gmail.com

Resources:

Chartschool.com

Stockcharts.com

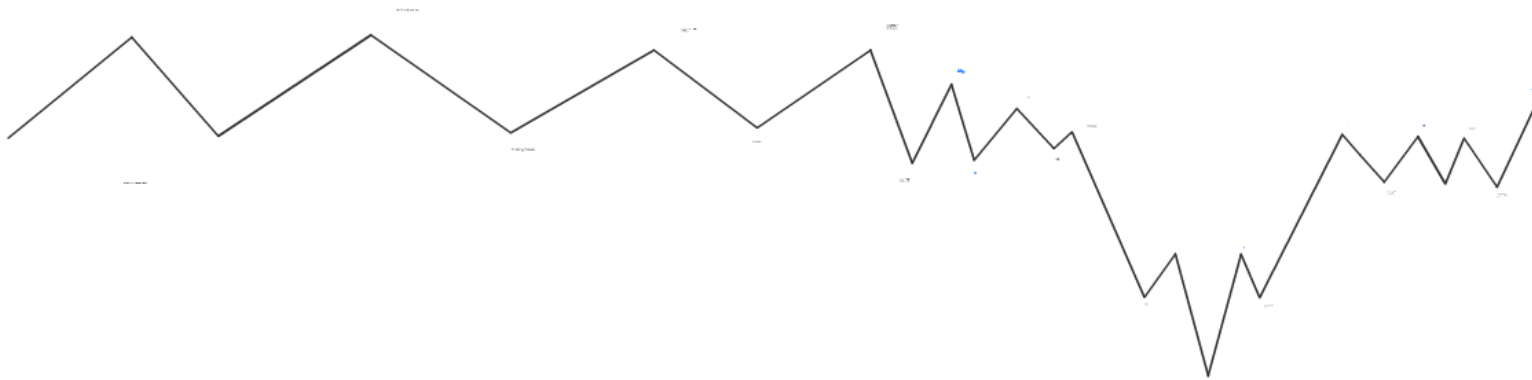
Cmegroup.com

Technical Analysis of the Financial Markets by
John J. Murphy

Japanese Candlestick Charting Techniques by
Steve Nison

Canadian Securities Course Textbook

Technical Analysis



Candlestick Analysis

