

What phyla has flame cells?

Platyhelminthes

Cnidaria

Porifera

Nematoda

Flame cells are involved with which system?

Excretory

Respiration

Digestive

Reproductive

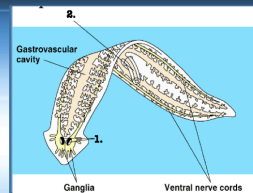
What structure acts as a simplistic digestive and circulatory system?

Flame Cells

Gastrovascular Cavity

Spicules

Two-way system



The organism in the picture is a...

Hydra

Guinea Worm

Sea Anemone

Planaria

What is the organism in the picture?

Sea anemone

Planaria

Hydra

Scyphozoan

What process in the organism in the picture going through?

Budding

Fragmentation

Fission

Strobilation

Which is not a characteristic Of Phylum Platyhelminthes

Simple Cephalization

Hermaphroditic

Radial Symmetry

Triploblastic

Which is the defining feature of cnidarians?

Radial Symmetry

Cnidocytes

Mesoglea

Medusa body form



The following Organism belongs in which group?

Nematoda

Playhelminthes

Porifera

Cnidaria

Which group contains organisms of different sexes?

Nematoda

Playhelminthes

Cnidaria

Porifera

A pseudocoelom is not a true coelom because...

It is a space within the mesoderm

It is a space between layers

It is a space within the ectoderm

It is a space within the endoderm

Which was necessary for cephalization to develop?

Gastrovascular Cavity

One-way digestive system

Phagocytosis

Bilateral Symmetry

Which **two things** are spicules used for?

Support and feeding

Feeding and copulation

Support and copulation

Movement and Support

The form of asexual reproduction that occurs when an organism purposefully splits itself is...

Sex

Fragmentation

Fission

Strobilation

The first **extant** group of animals on Earth

Porifera

Playhelminthes

Nematoda

Cnidaria

Penis fencing is possible in flatworms because...

They have nervous systems

They are hermaphrodites

They have two-way digestive systems

They are worms