

NAME: _____

DATE: _____

PERIOD: _____

Lesson 9 to 13 Test Review
LSP Science

Instructions:

Work independently or with a partner to figure out the answer to the following questions. You do not need to hand this in when you are finished. It is to help you review and study for the upcoming test on **Wed. Nov. 6, 2019.**

Fill in the blank. Choose the word or words from the WORD BANK that best completes each sentence.

WORD BANK				
Ventricle	Digestive tract	Filter feeding	Flame cells	Gastrovascular cavity
Herbivore	Hormones	Nerve net	Close circulatory system	

1. The circulatory system carries chemical signals known as _____.
2. A tube-like digestive space with an opening at each end is called a _____.
3. A chamber that pumps blood out of a vertebrate heart is called a _____.
4. Flatworms remove excess water through a system of tubes connected to _____.
5. Blood stays inside vessels at all times in a _____.
6. An animal that eats plants is called a _____.
7. Cnidarians have a simple nervous system known as a _____.
8. A _____ is a digestive space with a single opening.
9. A sponge gets food by _____.

Matching:

10. Read the definitions/descriptions in the right column and write the correct letter next to the term in the answer column. (12 marks)

Answer	Term	Definitions/Descriptions
	Diffusion	A. A system in which blood stays in side vessels at all times.
	Osmosis	B. A system in which blood makes direct contact with cells.
	Closed circulatory system	C. A chemical signal that glands produce and secrete.
	Open circulatory system	D. A chemical signal that a nerve cell releases.
	Atrium	E. A bunch of nerve cells that are loosely connected.
	Ventricle	F. The movement of materials from an area of high concentration to an area of low concentration.
	Hormone	G. The brain and the spinal cord.
	Impulse	H. The nerves that send messages between the CNS and other body parts.
	Neurotransmitter	I. A heart chamber that receives blood returning to the heart.
	Nerve net	J. A message that a nerve cell (neuron) carries.
	Central nervous system	K. The movement of water from an area of high concentration to an area of low concentration.
	Peripheral nervous system	L. A heart chamber that pumps blood out of the heart.

11. Mosquitoes get food by
 - A. Consuming large pieces
 - B. Trapping their prey
 - C. Sucking fluid
 - D. Eating solid pieces of food

12. What kind of system do insects use to carry air into and out of the body?
 - A. Gills
 - B. Lungs
 - C. Tubes
 - D. Nerves

13. What do animals secrete to break down food into tiny absorbable particles?
 - A. Digestive enzymes
 - B. Hormones
 - C. Neurotransmitters
 - D. Chewing

14. In a mammal's heart, where does blood go after it enters the right atrium?
 - A. Left atrium
 - B. Left ventricle
 - C. Right atrium
 - D. Right ventricle

15. The circulatory system carries chemical signals known as...
 - A. Flame cells
 - B. Hormones
 - C. Impulses
 - D. Neurotransmitters

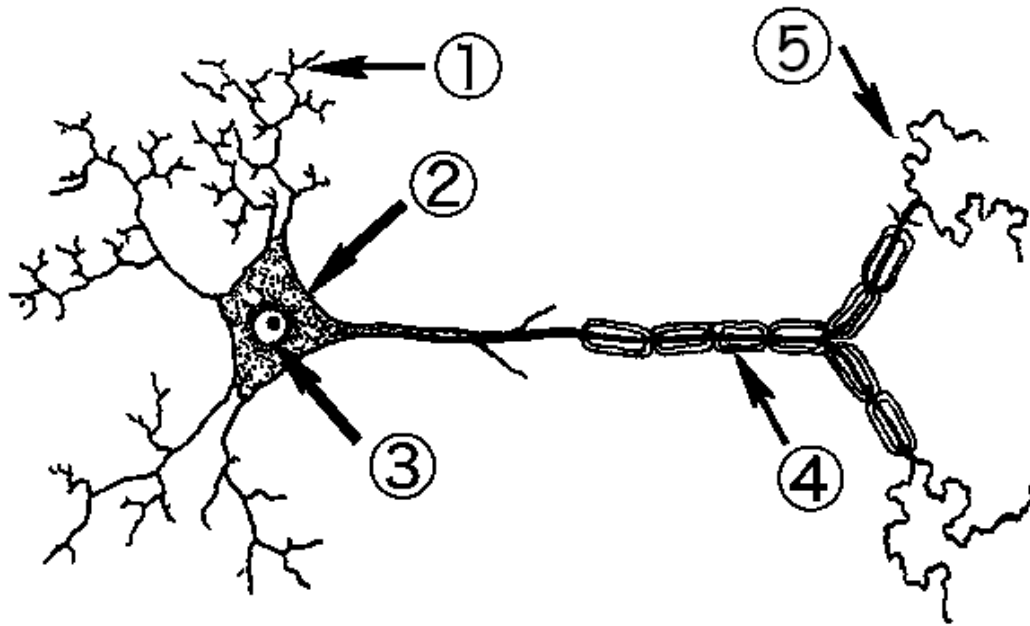
16. A tube-like digestive space with an opening at each end is called a...
 - A. Gastrovascular cavity
 - B. Digestive tract
 - C. Gastrovascular tube
 - D. Digestive cavity

17. A chamber that pumps blood out of a vertebrate heart is called a...
 - A. Ventricle
 - B. Atrium
 - C. Chamber
 - D. All of the above

18. Blood stays inside vessels at all times in a...
 - A. Circulatory system
 - B. Central nervous system
 - C. Open circulatory system
 - D. Closed circulatory system

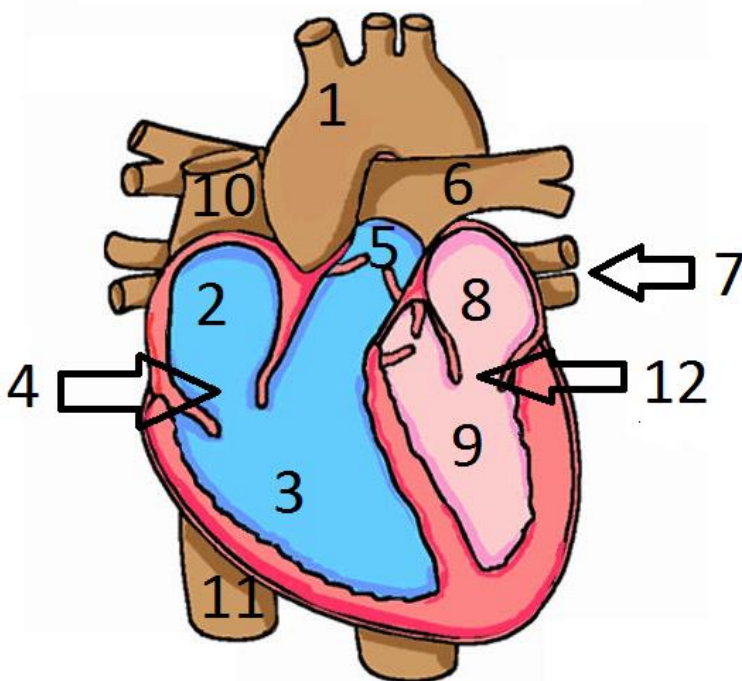
19. Cnidarians have a simple nervous system known as a...
- A. Nerve bundle
 - B. Nerve net
 - C. Nerve web
 - D. Nervous system
20. A digestive tract with a single opening is called a...
- A. Gastrovascular cavity
 - B. Digestive cavity
 - C. Stomach
 - D. One-way cavity
21. Sponges get food by...
- A. Feeding on fluids
 - B. Filter feeding
 - C. Consuming large particles
 - D. Sucking fluids
22. What is the toxic waste product formed when protein is broken down in the body?
- A. Oxygen
 - B. Carbon dioxide
 - C. Urine
 - D. Ammonia
23. The endocrine system works best to control activities that happen...
- A. Quickly
 - B. Only once
 - C. All the time
 - D. Slowly
24. The nerves that send messages between the CNS and other body parts make up the...
- A. Central nervous system
 - B. Peripheral nervous system
 - C. Nerve net
 - D. Nerve network
25. A chemical signal that is released by a nerve cell is called a...
- A. Neurotransmitter
 - B. Impulses
 - C. Message
 - D. Hormone

26. What is #1 pointing to?



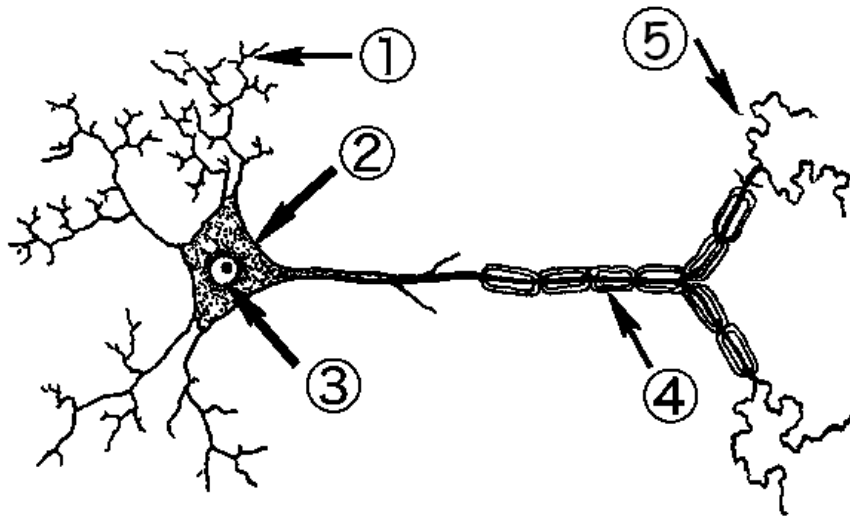
- A. Axon ending
- B. Dendrite
- C. Myelin sheath
- D. Cell body

27. What is #2?



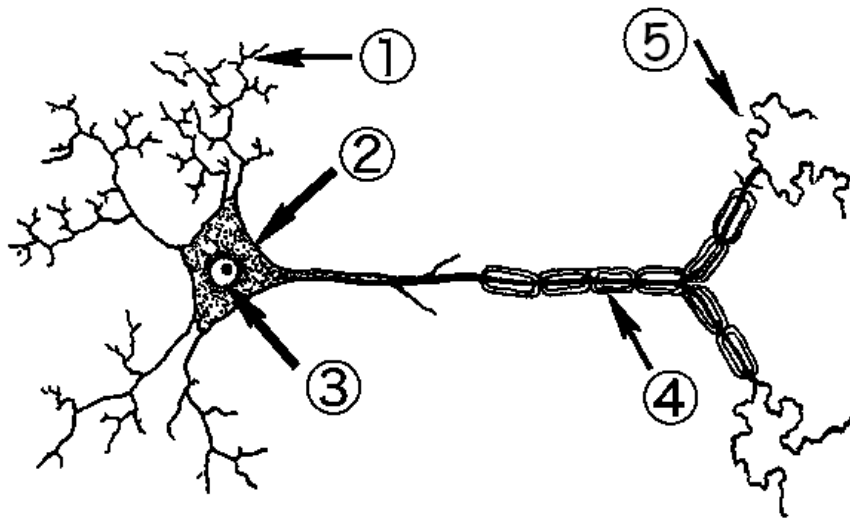
- A. Right atrium
- B. Left atrium
- C. Right ventricle
- D. Left ventricle

28. What is #3?



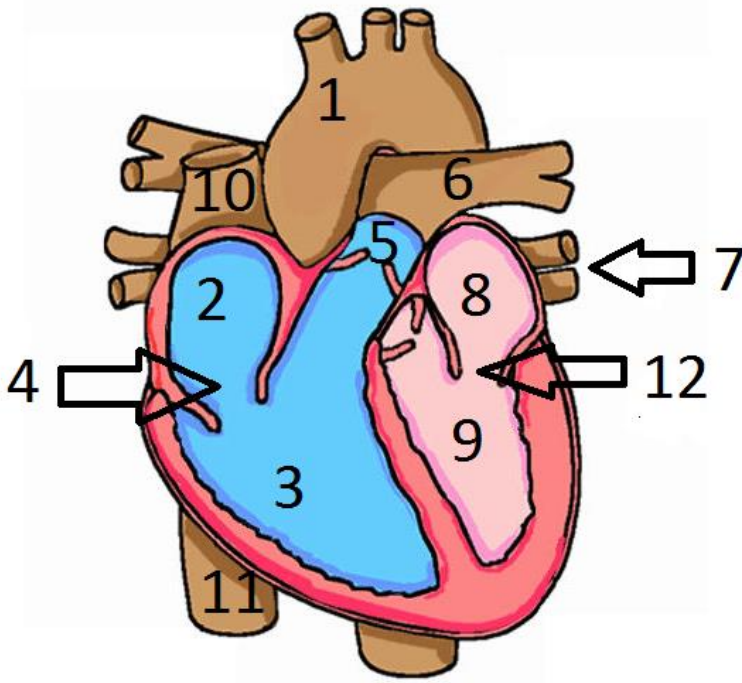
- A. Dendrite
- B. Cell bod
- C. Nucleus
- D. Axon

29. What is #4?



- A. Dendrite
- B. Myelin sheath
- C. Cell body
- D. Axon ending

30. What is #8?



- A. Right atrium
- B. Left atrium
- C. Right ventricle
- D. Left ventricle