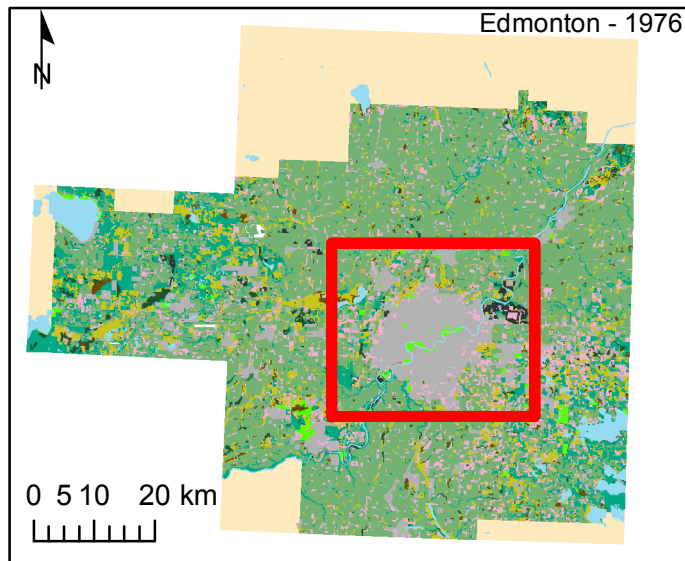
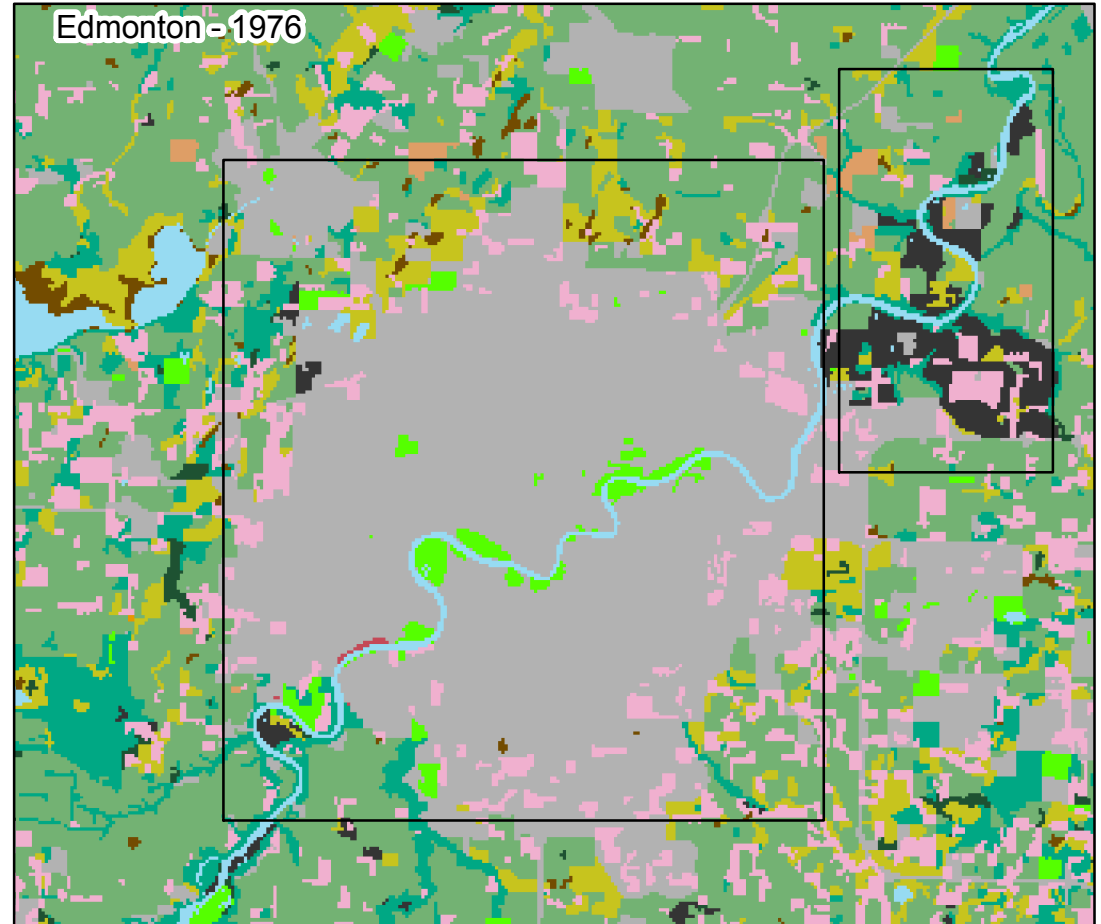
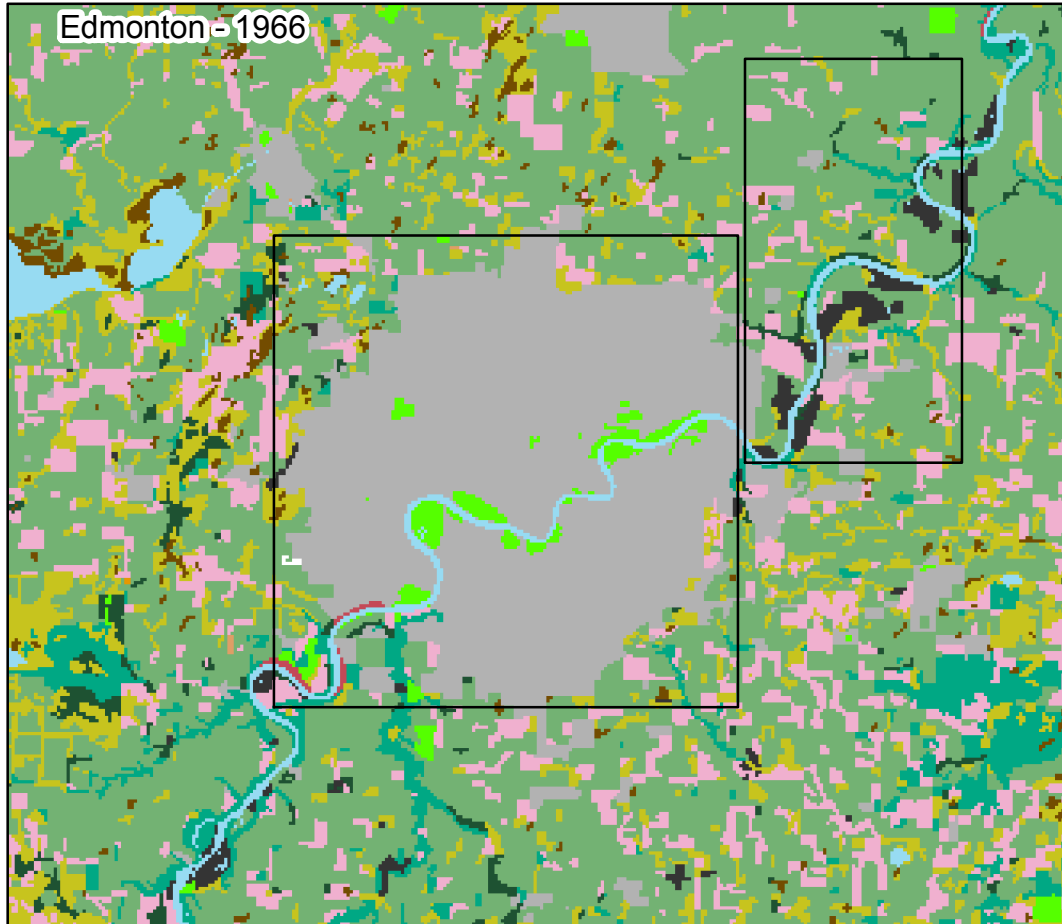


# Land Use Change in Edmonton 1966-76



0 15 30 km

Resolution: 100m

Boxes indicate areas of significant change

## Land Use Type

- |  |  |  |                                 |
|--|--|--|---------------------------------|
|  | Unmapped Areas                         |  | Swampmarsh or bog               |
|  | Cropland                               |  | Outdoor recreation              |
|  | Urban built-up area                    |  | Improved pasture and range land |
|  | Mines, quarries, sand, and gravel pits |  | Unproductive landsand           |
|  | Horticulture                           |  | Productive woodland             |
|  | Unimproved pasture and range land      |  | Non-productive woodland         |
|  | Unproductive landrock                  |  | Water areas                     |

Connor Wolff  
GEOB 479  
25/01/16  
Coordinate System: NAD 1927 UTM Zone 12N  
Data Source:

The Canada Land Use Monitoring Program data extraction and distribution is managed by:

The Canada Centre for Remote Sensing  
Natural Resources Canada  
Government of Canada  
Room 650 - 615 Booth Street  
Ottawa, ON, Canada  
K1A 0E9

Based on significant research and development by:

The National Archives of Canada  
Canadian Wildlife Service, Environment Canada, Delta, B.C.

Data processing completed by:

Spatialanalysis,  
Ottawa, Ontario,  
Canada K1Y 0N3

The National Archives of Canada retains intellectual property.

(Copyright) Her Majesty the Queen in Right of Canada, 1999.