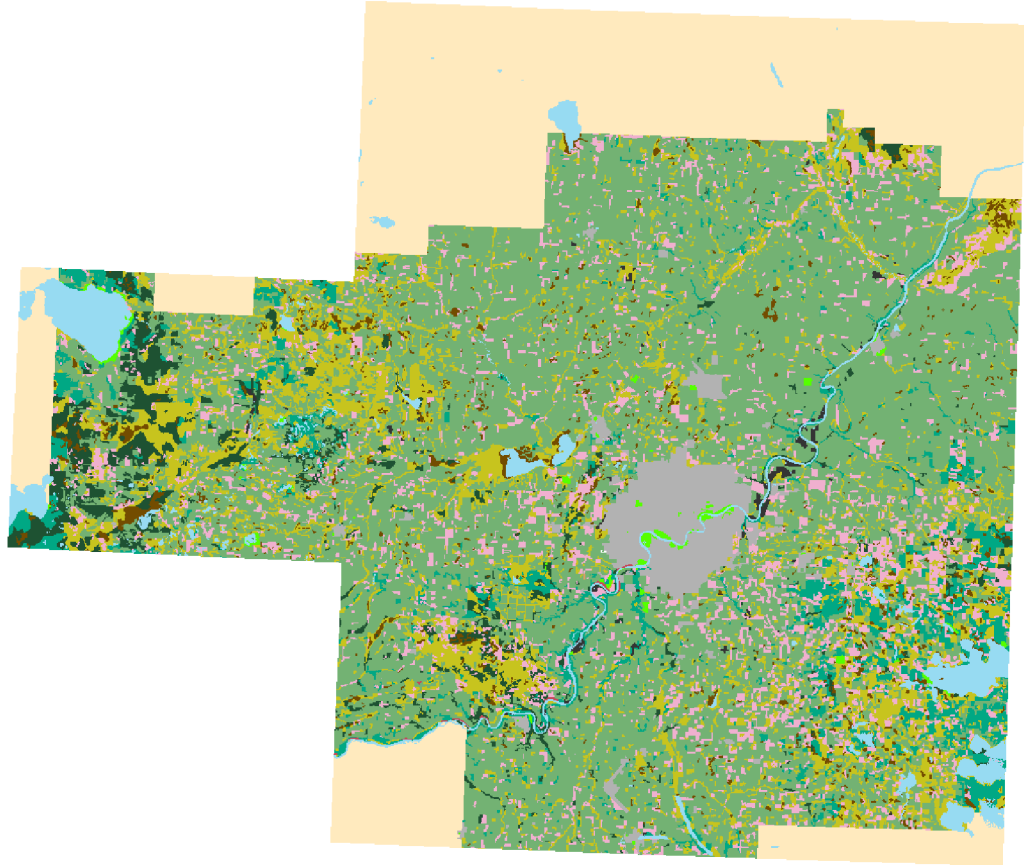
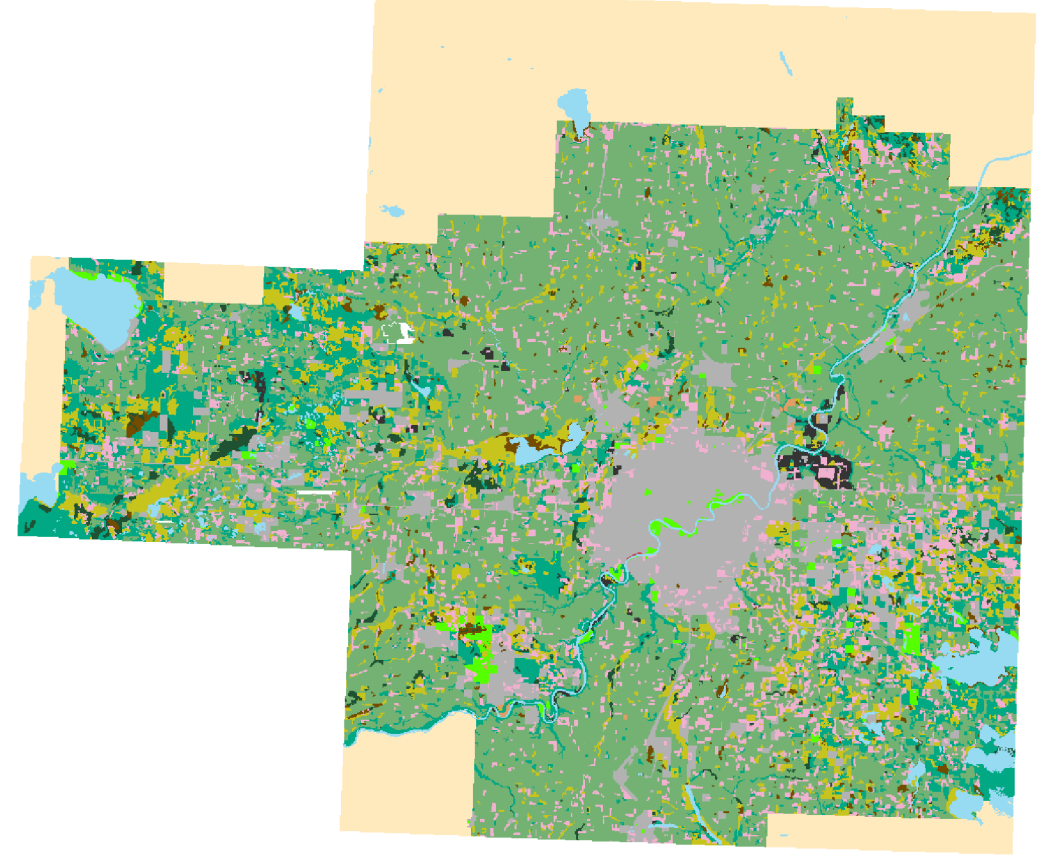


Land Use Change in Edmonton 1966-76

Edmonton - 1966



Edmonton - 1976



0 25 50 km

Resolution: 100m

Land Use Type

	Unmapped Areas		Swampmarsh or bog
	Cropland		Outdoor recreation
	Urban built-up area		Improved pasture and range land
	Mines, quarries, sand, and gravel pits		Unproductive landsand
	Horticulture		Productive woodland
	Unimproved pasture and range land		Non-productive woodland
	Unproductive landrock		Water areas

Connor Wolff
GEOB 479
25/01/16
Coordinate System: NAD 1927 UTM Zone 12N
Data Source:

The Canada Land Use Monitoring Program data extraction and distribution is managed by:

The Canada Centre for Remote Sensing
Natural Resources Canada
Government of Canada
Room 650 - 615 Booth Street
Ottawa, ON, Canada
K1A 0E9

Based on significant research and development by:

The National Archives of Canada
Canadian Wildlife Service, Environment Canada, Delta, B.C.

Data processing completed by:

Spatialanalysis,
Ottawa, Ontario,
Canada K1Y 0N3

The National Archives of Canada retains
intellectual property.

(Copyright) Her Majesty the Queen in Right of Canada, 1999.