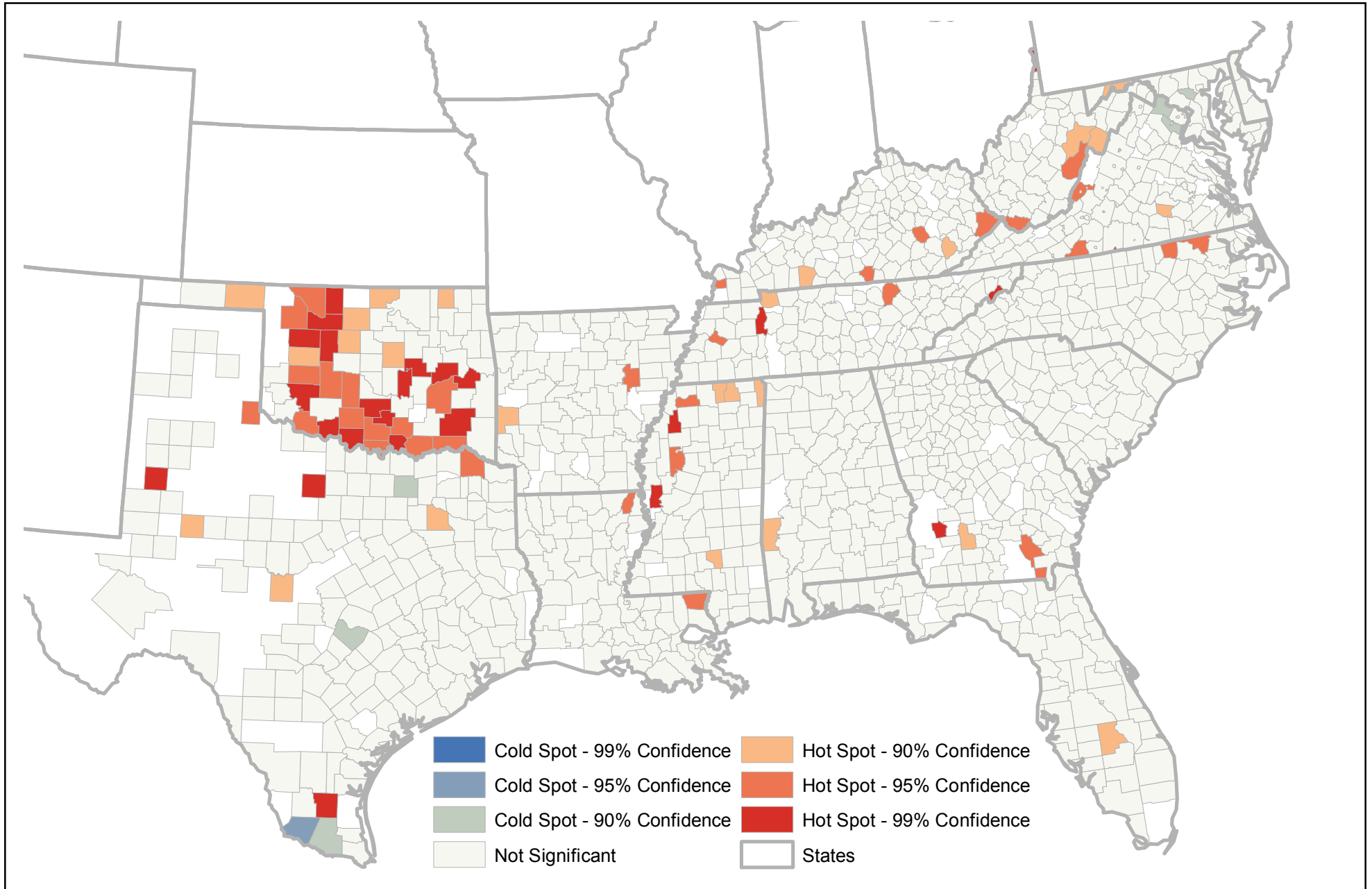
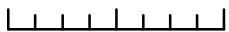


Heart Disease Rate Hot Spots Across the Southern United States of America

By County, in 2007



0 80 160 320 Kilometers



Source: Centers for Disease Control and Prevention (CDC) Wonder, UBC Geography

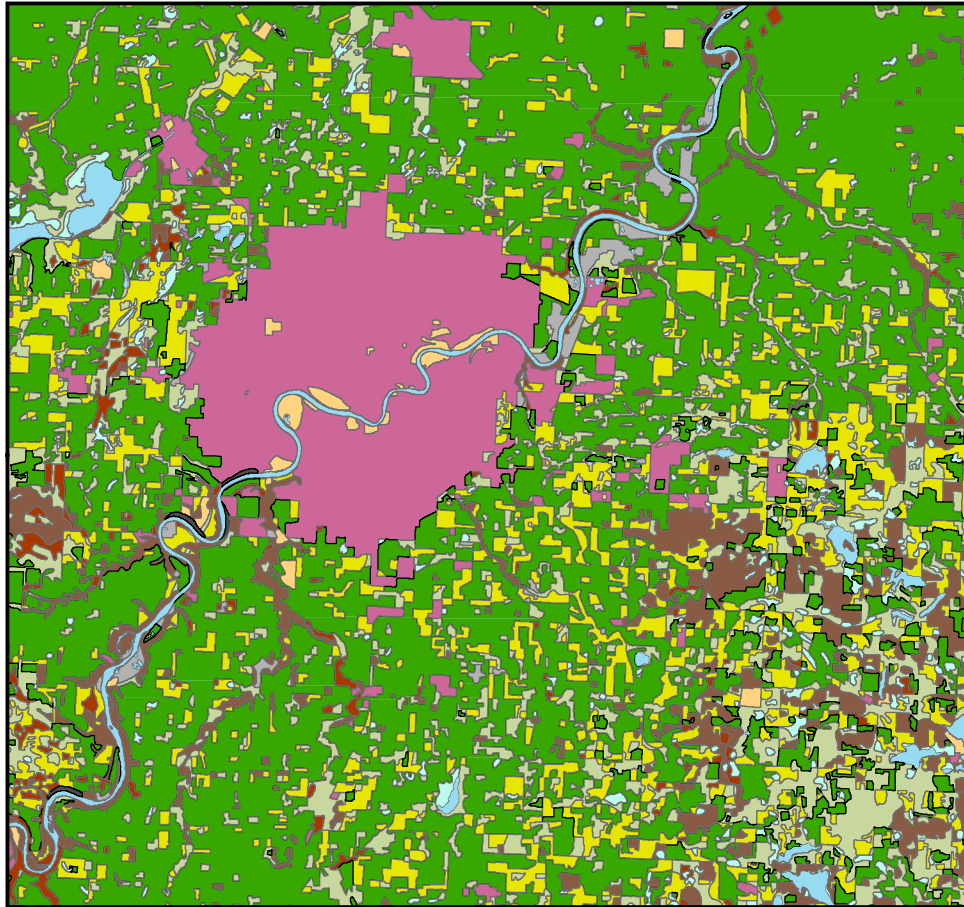
By: Grihalakshmi Soundarapandian

37082138

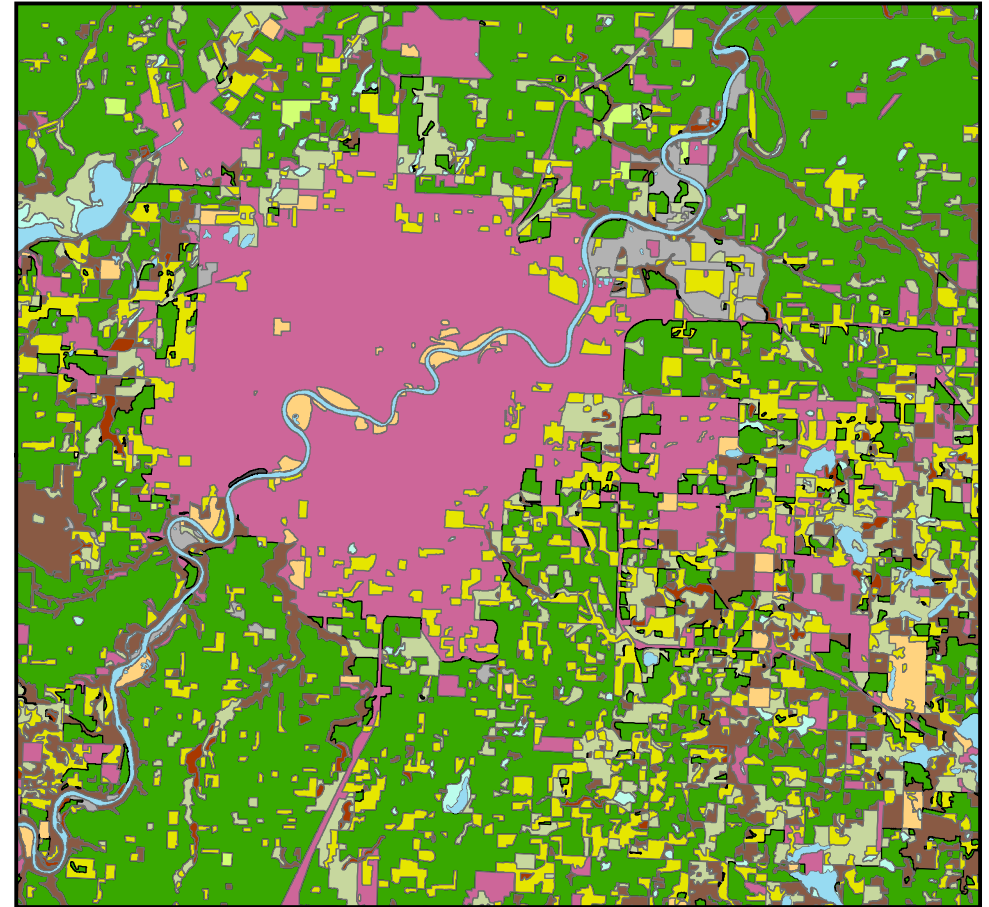
GEOB 479 L2A

The Effects of Urban Sprawl in the City of Edmonton Between 1966 and 1976

1966



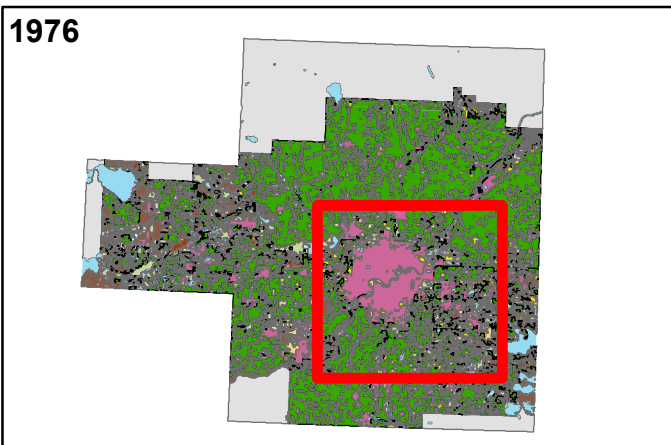
1976


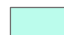














0 5 10 20 Kilometers



1976



- | | | | |
|---|-------------------------------------|---|-----------------------------------|
|  | Cropland |  | Swampmarsh or bog |
|  | Horticulture |  | Unimproved pasture and range land |
|  | Improved pasture and forage crops |  | Unmapped areas |
|  | Mines quarries sand and gravel pits |  | Unproductive landrock |
|  | Non-productive woodland |  | Unproductive landsand |
|  | Outdoor recreation |  | Urban built-up area |
|  | Productive woodland |  | Water areas |

By: Grihalakshmi Soundarapandian
 37082138
 GEOB 479 L2A
 January 25, 2018
 Source: GeoGratis, Canada Land
 Use Monitoring Program for the
 City of Edmonton
 Projection: Transverse Mercator

Social Skills of Children in the City of Vancouver

Explored Through the Gender Variable & the Results of Geographically Weighted Regression

GWR Results

Local R2

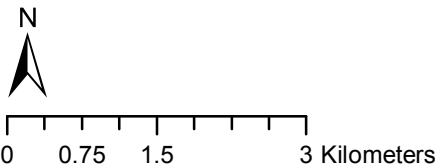
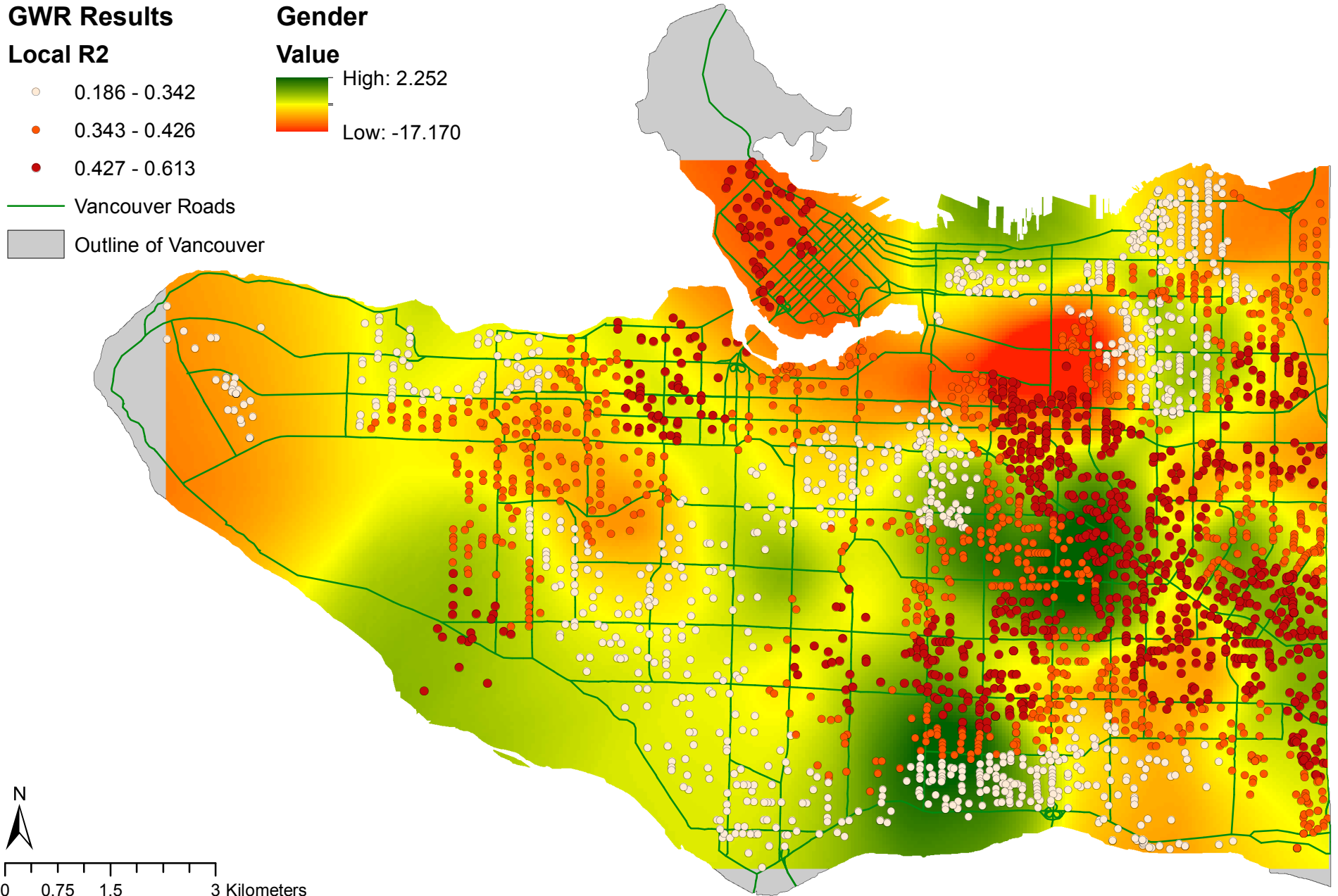
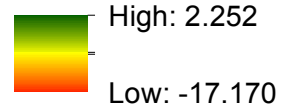
- 0.186 - 0.342
- 0.343 - 0.426
- 0.427 - 0.613

— Vancouver Roads

▭ Outline of Vancouver

Gender

Value



Source: Early Development Instrument, UBC Geography
Projected Coordinate System: NAD_1983_UTM_Zone_10N
Projection: Transverse Mercator

By: Grihalakshmi Soundarapandian, 37082138
GEOB 479 L2A
February 7, 2018

Social Skills of Children in the City of Vancouver

Explored Through the Income1000 Variable & the Results of Geographically Weighted Regression

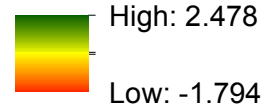
GWR Results

Local R2

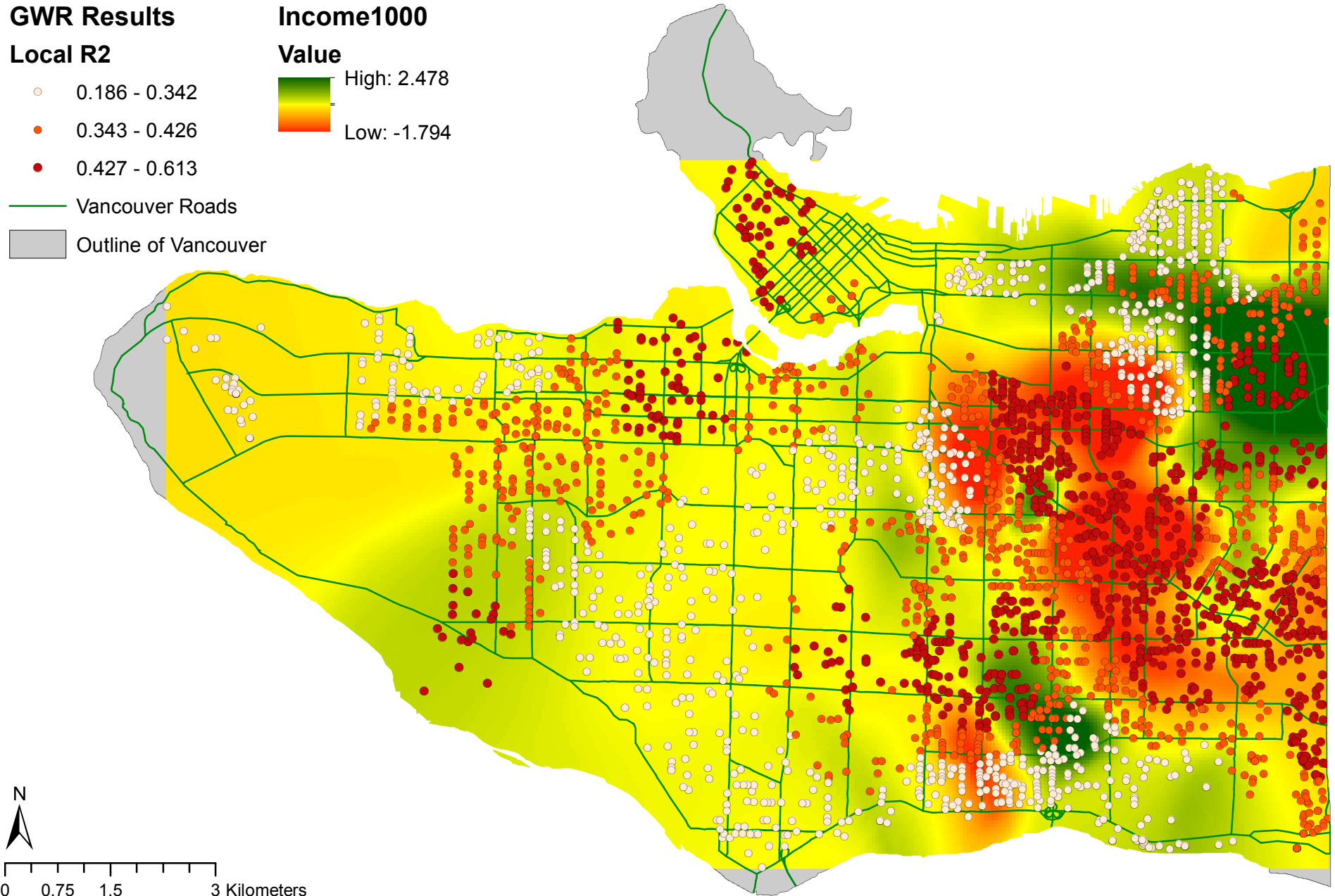
- 0.186 - 0.342
- 0.343 - 0.426
- 0.427 - 0.613

Income1000

Value



- Vancouver Roads
- Outline of Vancouver



Social Skills of Children in the City of Vancouver

Explored Through the Language Score Variable & the Results of Geographically Weighted Regression

GWR Results

Local R2

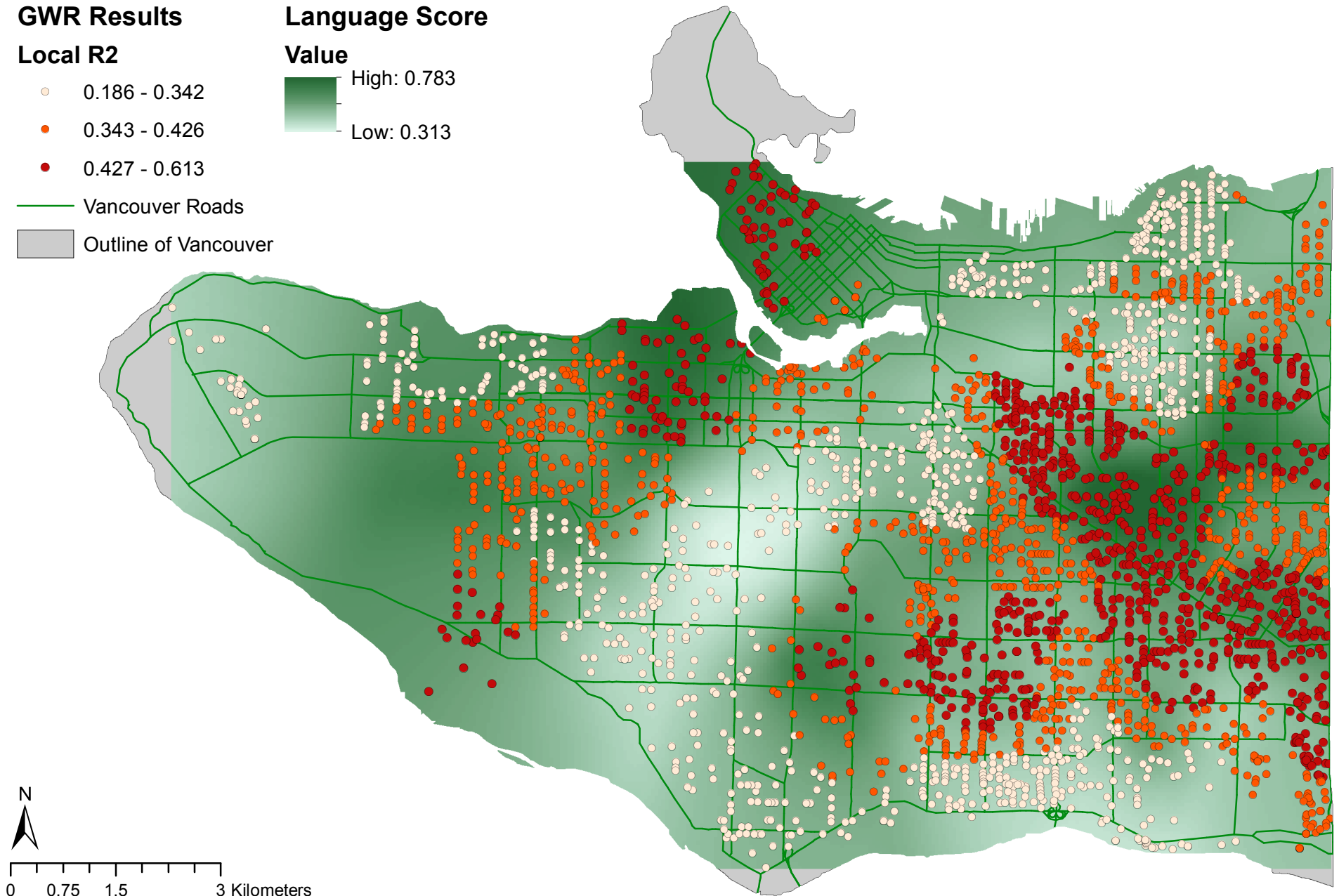
- 0.186 - 0.342
- 0.343 - 0.426
- 0.427 - 0.613

Language Score

Value

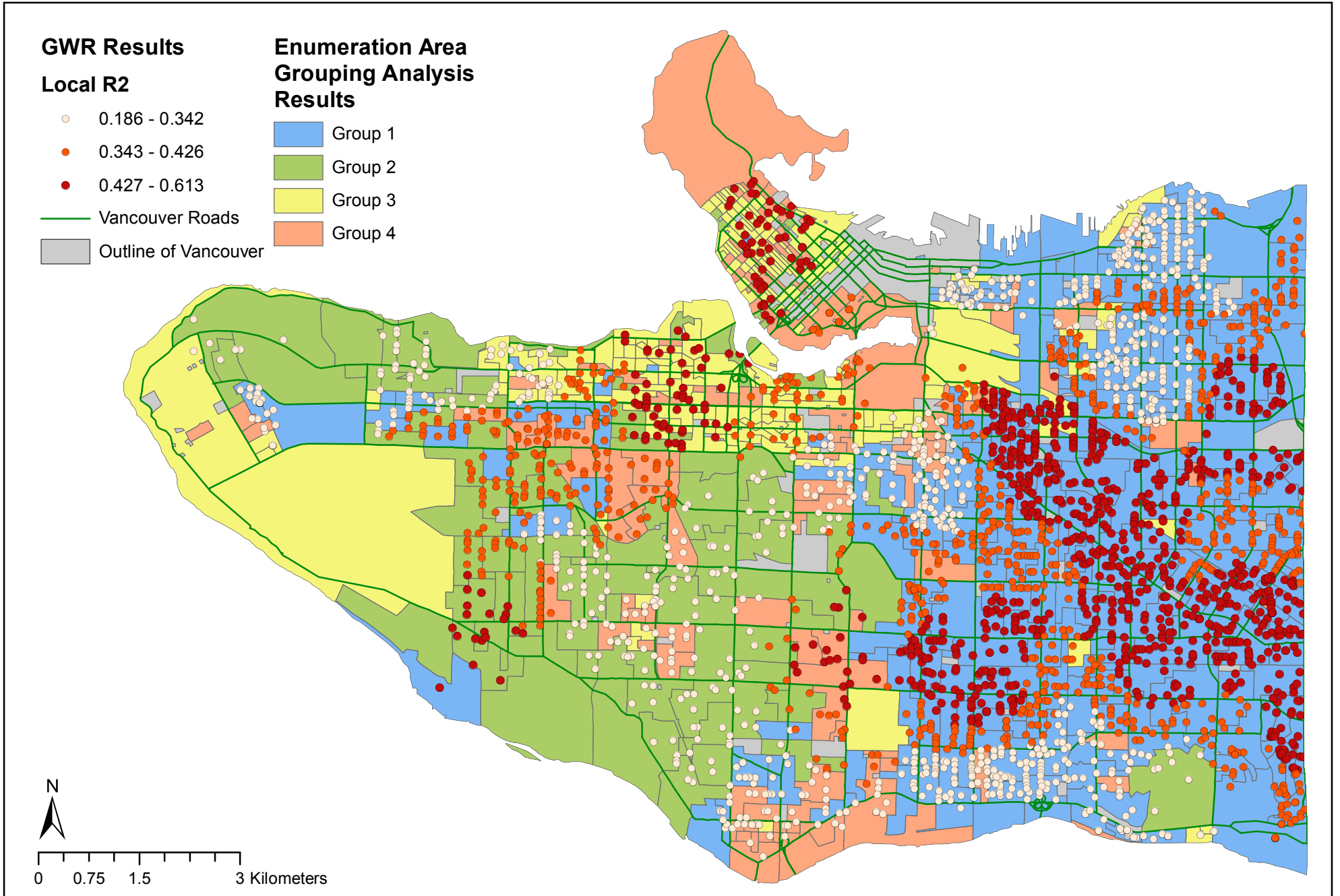
- High: 0.783
- Low: 0.313

- Vancouver Roads
- Outline of Vancouver



Social Skills of Children in the City of Vancouver

Explored Through the Results of Geographically Weighted Regression & Grouping Analysis

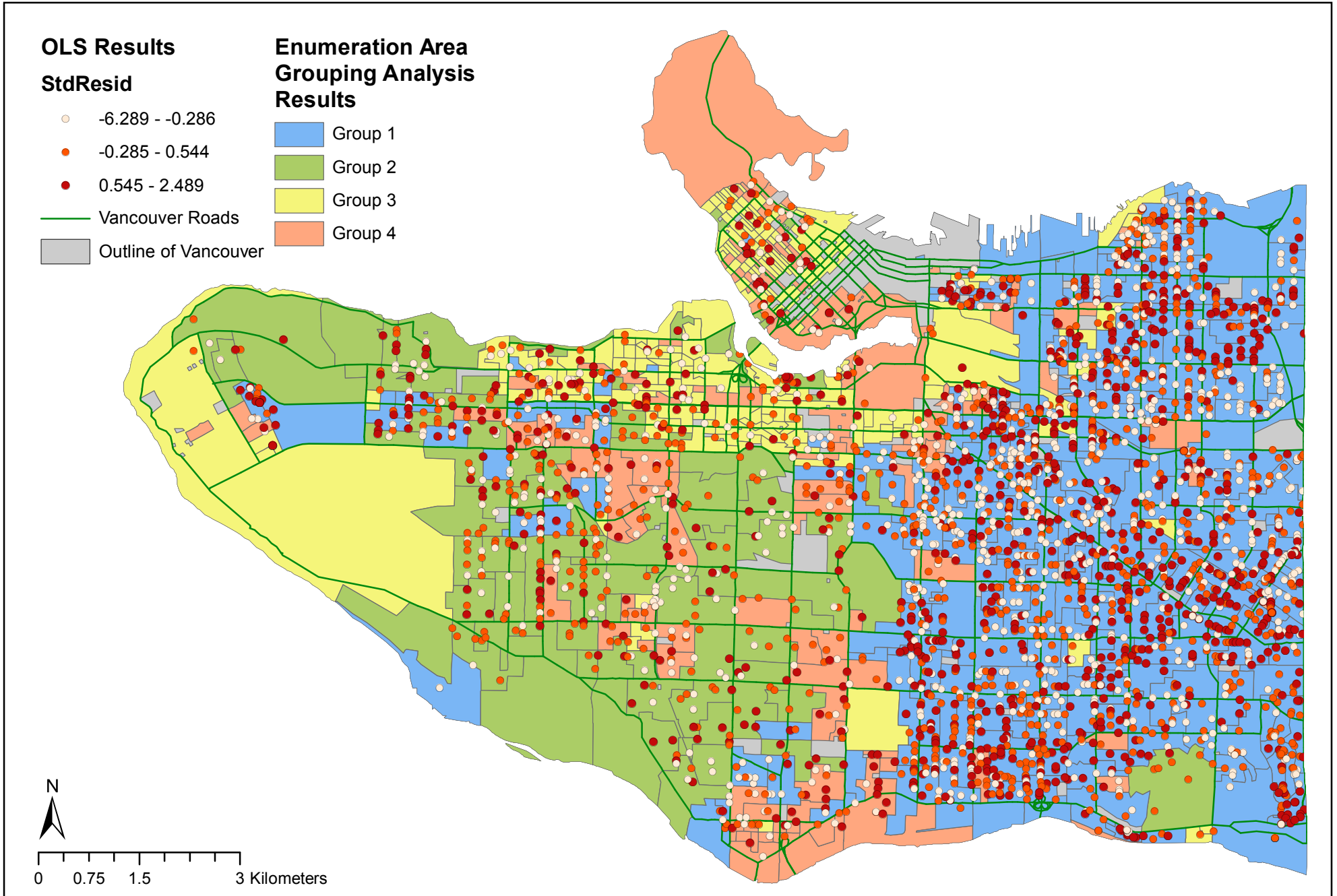


Source: Early Development Instrument, UBC Geography
Projected Coordinate System: NAD_1983_UTM_Zone_10N
Projection: Transverse Mercator

By: Grihalakshmi Soundarapandian, 37082138
GEOB 479 L2A
February 7, 2018

Social Skills of Children in the City of Vancouver

Explored Through the Regression Results of Ordinary Least Squares & Grouping Analysis



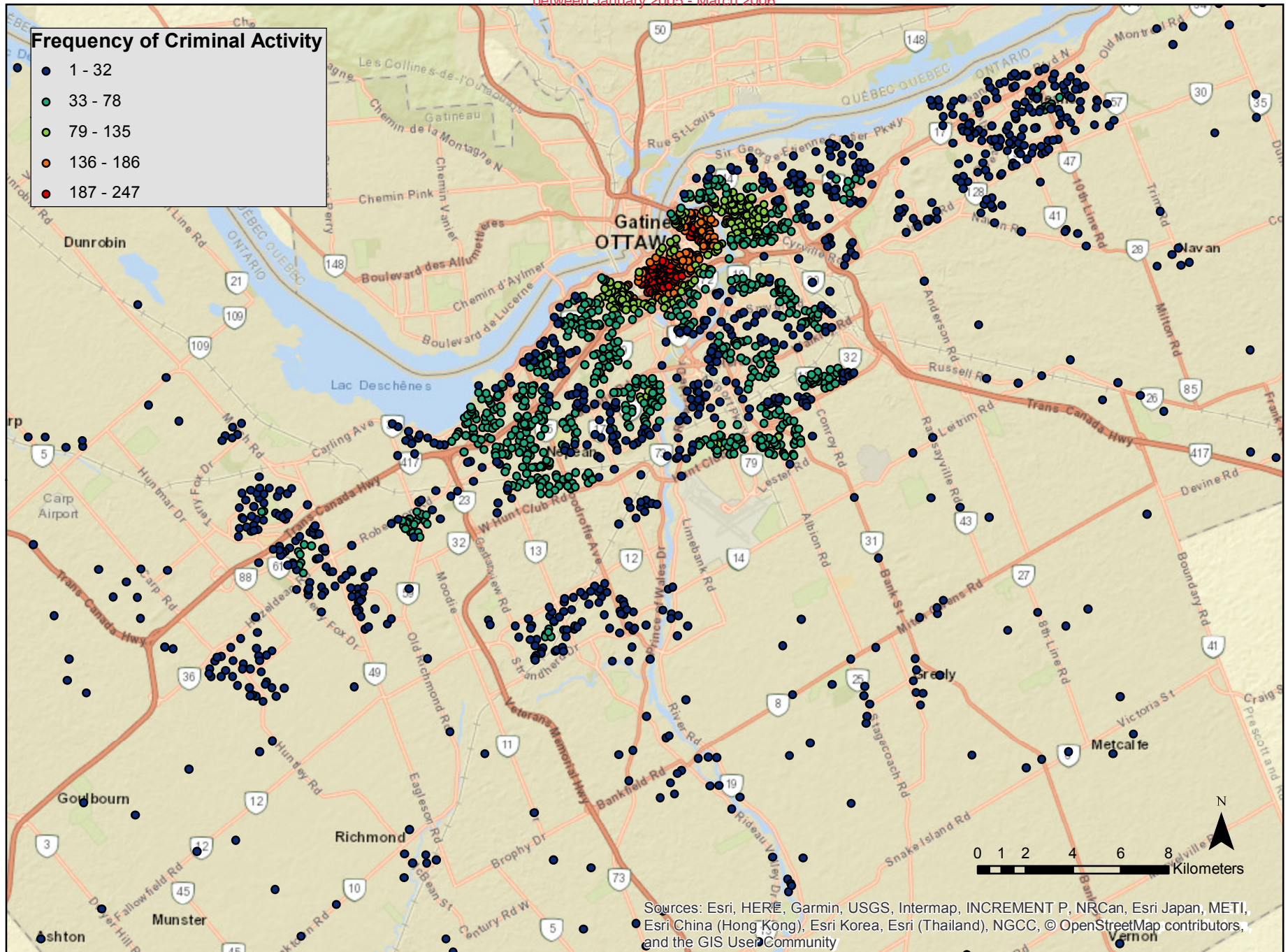
Source: Early Development Instrument, UBC Geography
Projected Coordinate System: NAD_1983_UTM_Zone_10N
Projection: Transverse Mercator

By: Grihalakshmi Soundarapandian, 37082138
GEOB 479 L2A
February 7, 2018

Frequency of Criminal Activity in the Ottawa-Nepean Area

Based on the number of residential break & enter crimes within 1000m of a point, using Fuzzy Mode Hotspot Analysis

between January 2005 - March 2006



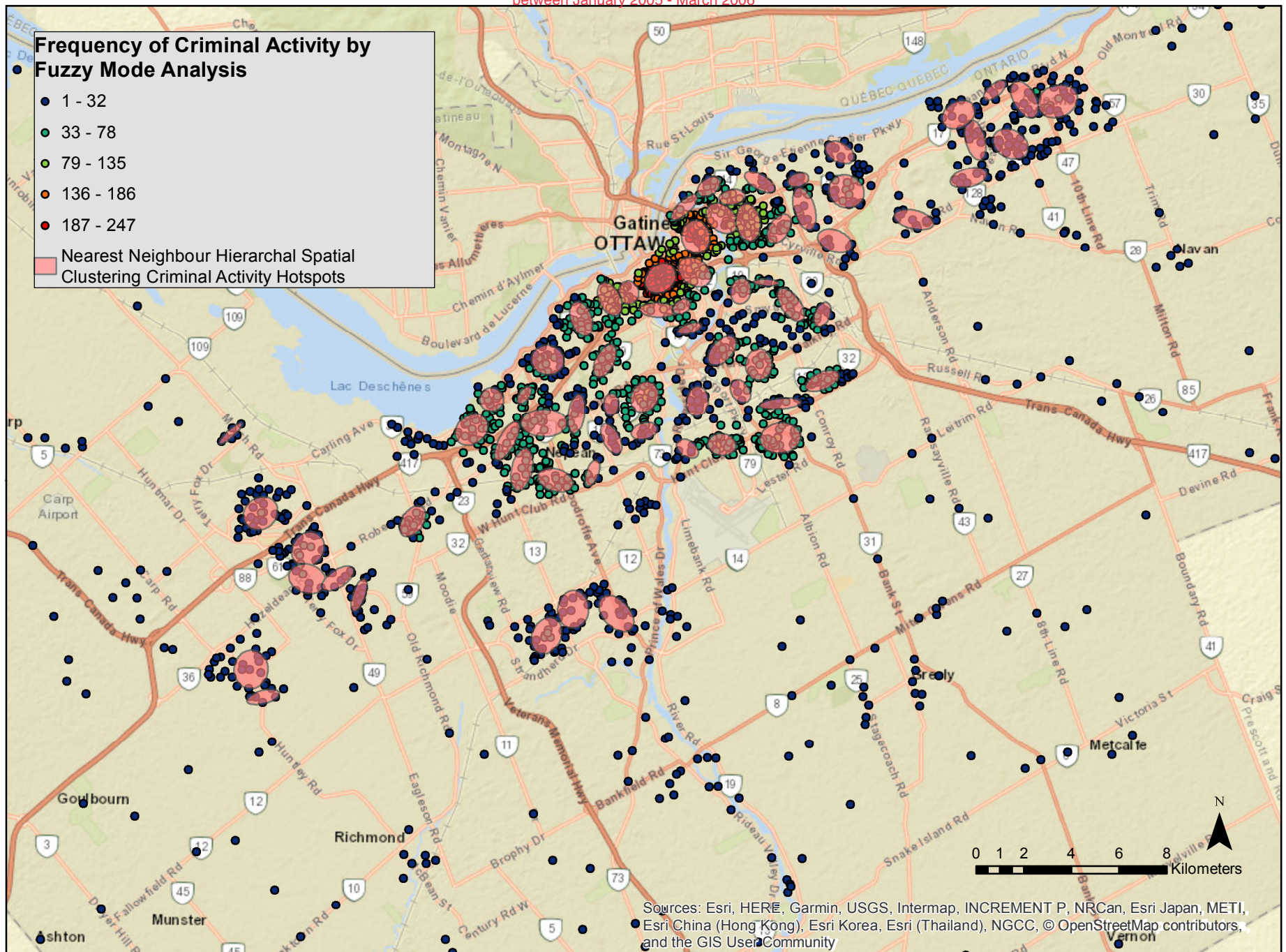
Source: Statistics Canada, Ottawa Police Department, ESRI Basemap, & OpenStreetMap
Projection: Transverse Mercator

By: Grihalakshmi Soundarapandian, 37082138
GEOB 479 L2A
March 12, 2018

Residential Break & Enter Crime Hotspots in the Ottawa-Nepean Area

Based on Nearest Neighbour Hierarchical Spatial Clustering (Non-Risk-Adjusted)

between January 2005 - March 2006



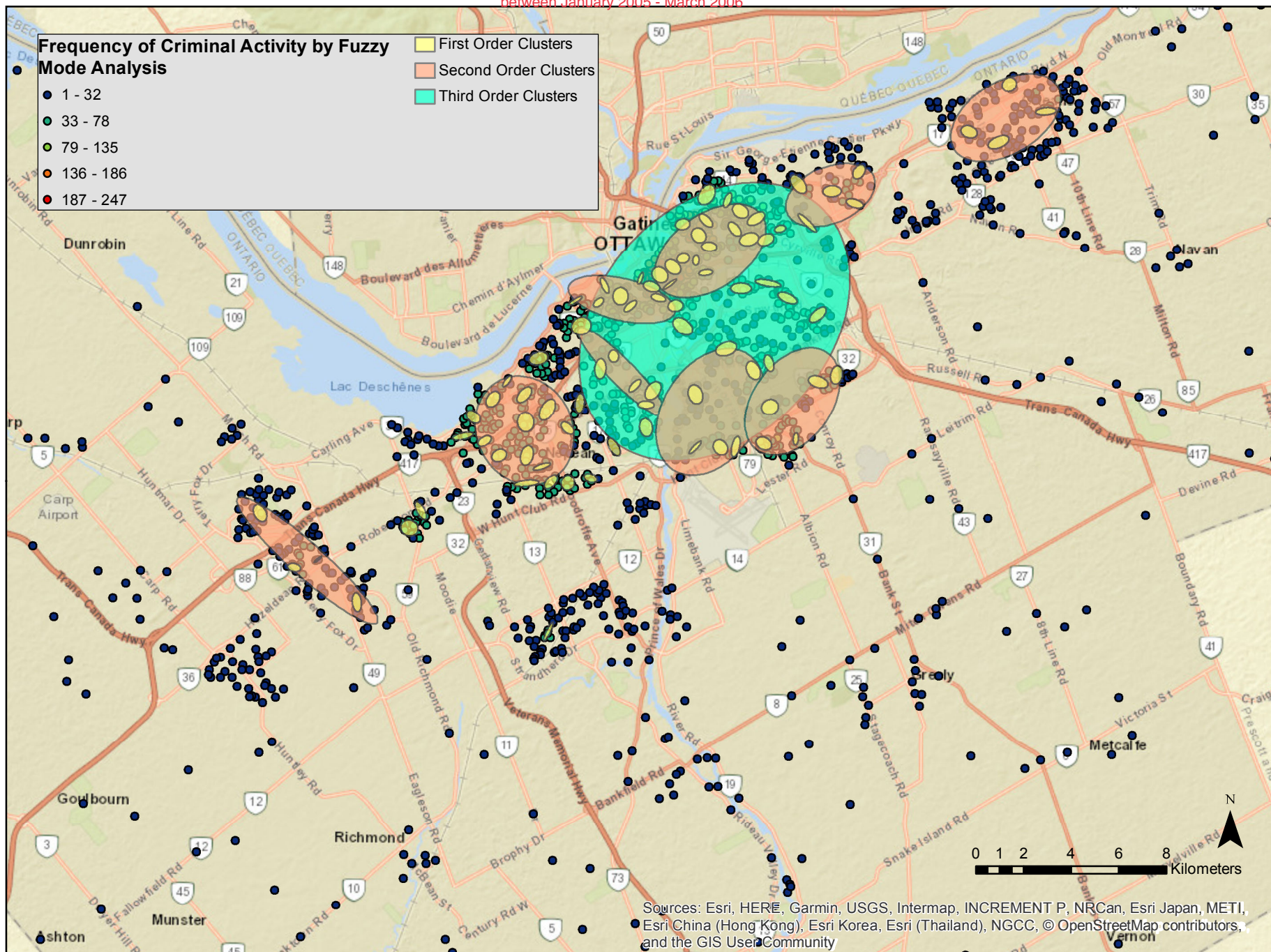
Source: Statistics Canada, Ottawa Police Department, ESRI Basemap, & OpenStreetMap
Projection: Transverse Mercator

By: Grihalakshmi Soundarapandian, 37082138
GEOB 479 L2A
March 12, 2018

Residential Break & Enter Crime Hotspots in the Ottawa-Nepean Area

Based on Nearest Neighbour Hierarchical Spatial Clustering (Risk-Adjusted)

between January 2005 - March 2006



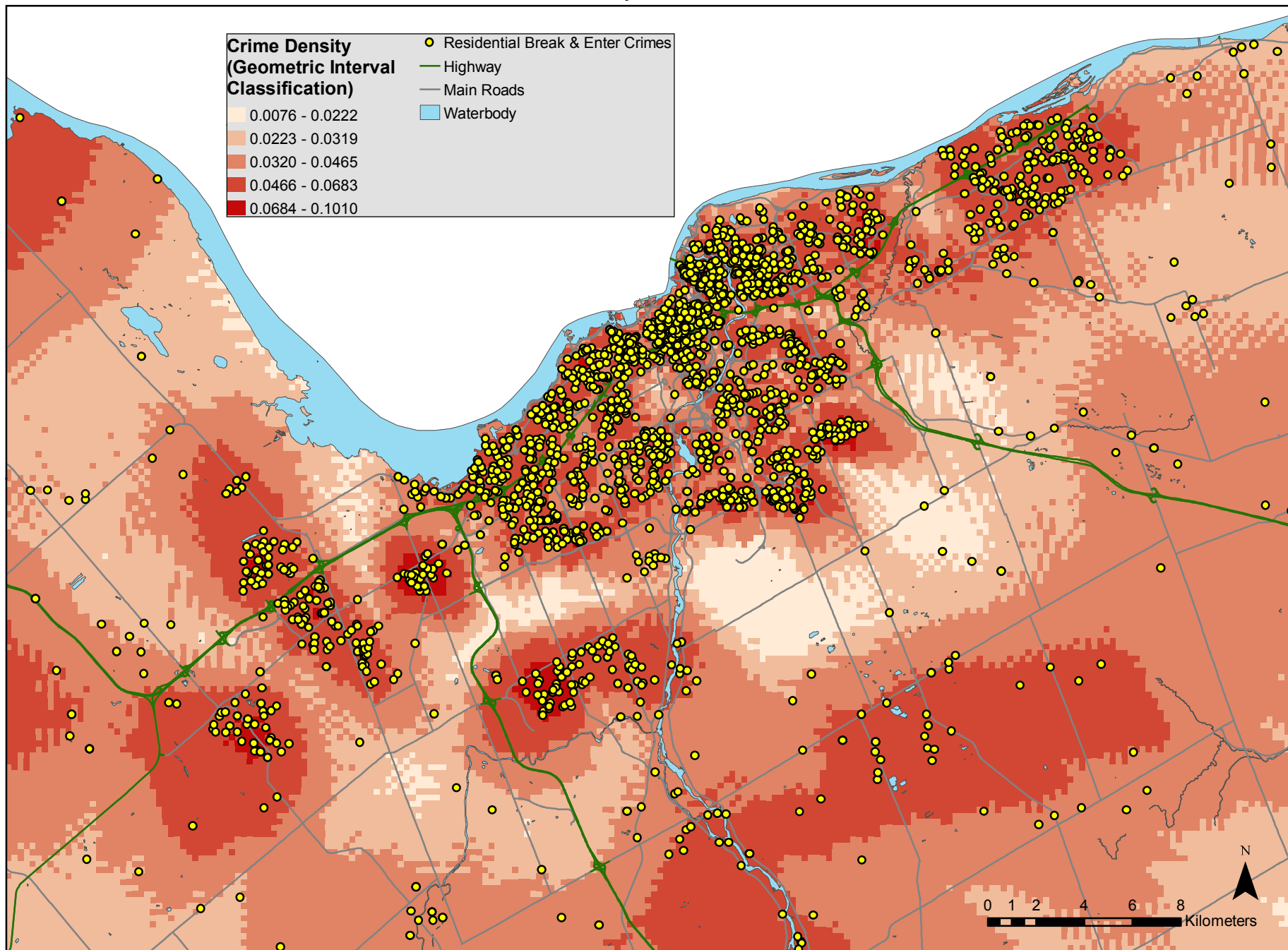
Source: Statistics Canada, Ottawa Police Department, ESRI Basemap, & OpenStreetMap
 Projection: Transverse Mercator

By: Grihalakshmi Soundarapandian, 37082138
 GEOB 479 L2A
 March 12, 2018

Spatial Distribution of Residential Break & Enter Crime in the Ottawa-Nepean Area

Based on Single Surface Kernel Density Estimation Interpolation

between January 2005 - March 2006



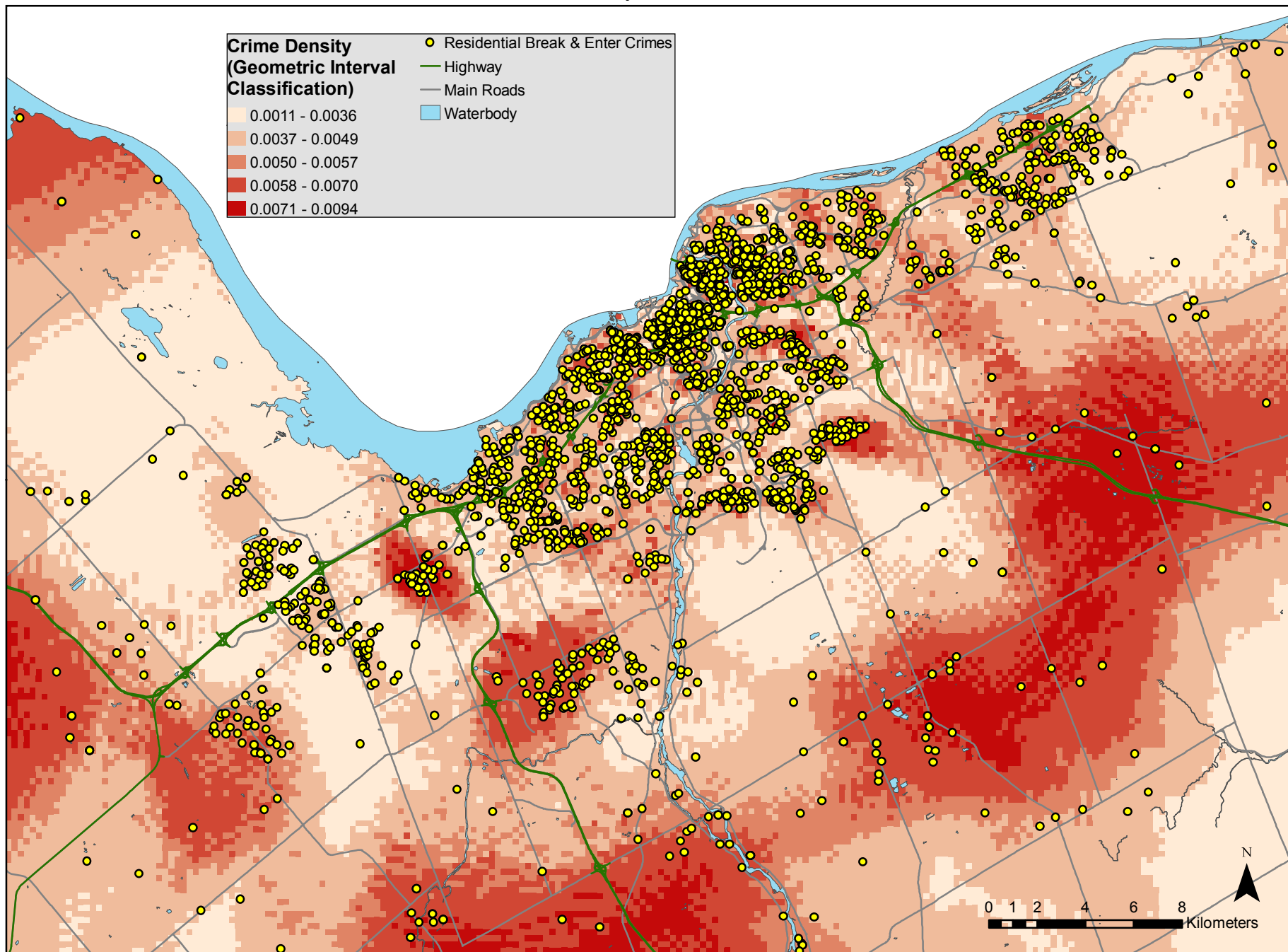
Source: Statistics Canada, Ottawa Police Department, ESRI Basemap, & OpenStreetMap
Projection: Transverse Mercator

By: Grihalakshmi Soundarapandian, 37082138
GEOB 479 L2A
March 12, 2018

Spatial Distribution of Residential Break & Enter Crime in the Ottawa-Nepean Area

Based on Dual Surface (Relative Risk) Kernel Density Estimation Interpolation

between January 2005 - March 2006



Source: Statistics Canada, Ottawa Police Department, ESRI Basemap, & OpenStreetMap
Projection: Transverse Mercator

By: Grihalakshmi Soundarapandian, 37082138
GEOB 479 L2A
March 12, 2018