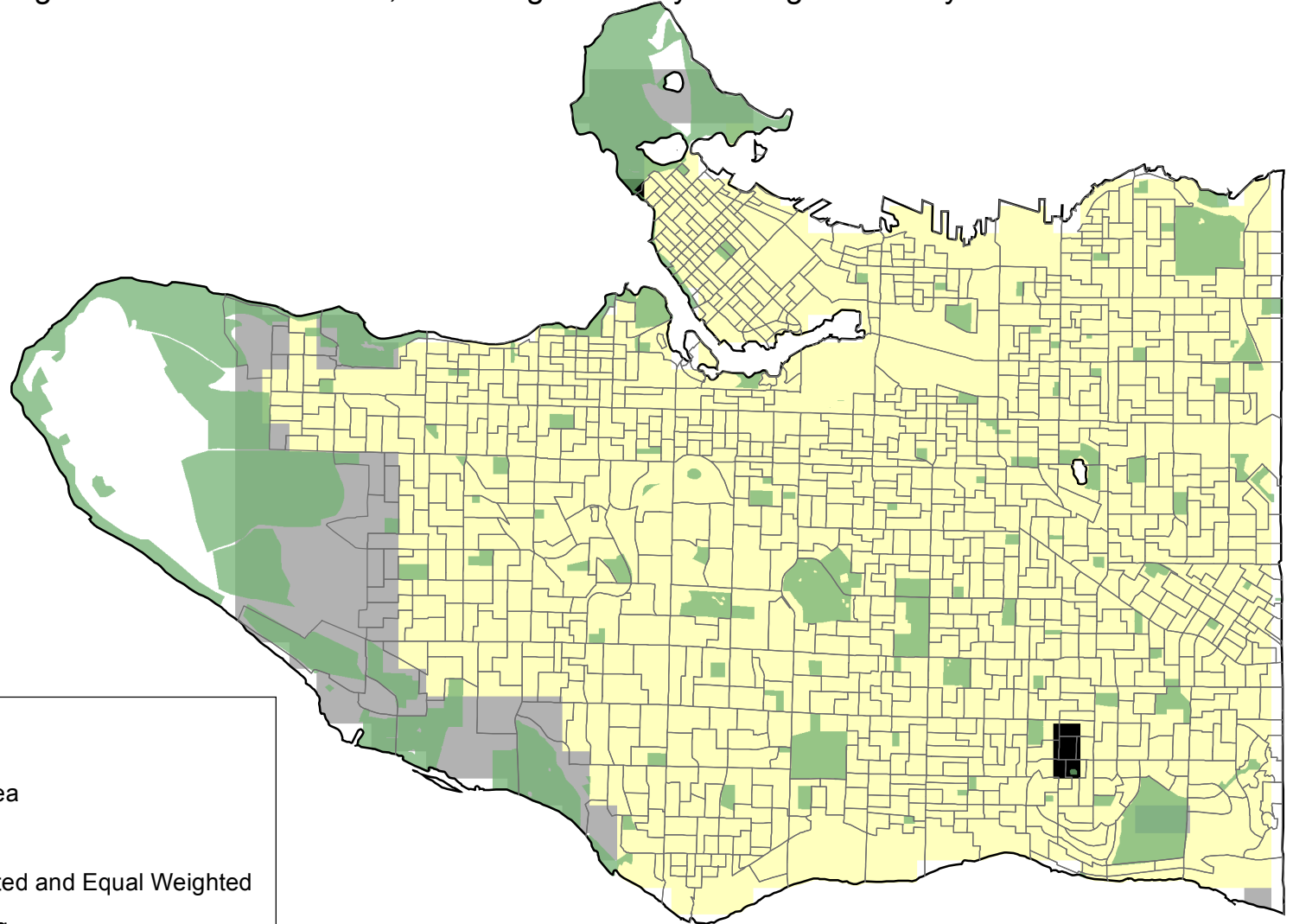
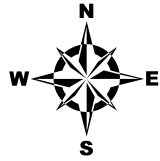


Best Parks for Skyviewing in City of Vancouver

Using Vancouver Crime Data, Street Light Density and Light Intensity



Legend

- Vancouver Dissemination Area
- City of Vancouver Parks
- Ideal Areas from both Weighted and Equal Weighted
- Results from Equal Weighting
- Poor Viewing Areas

0 1.25 2.5 5 km 1 cm = 1 km

Coordinate System: NAD 1983 UTM Zone 10N
Projection: Transverse Mercator
Datum: North American 1983