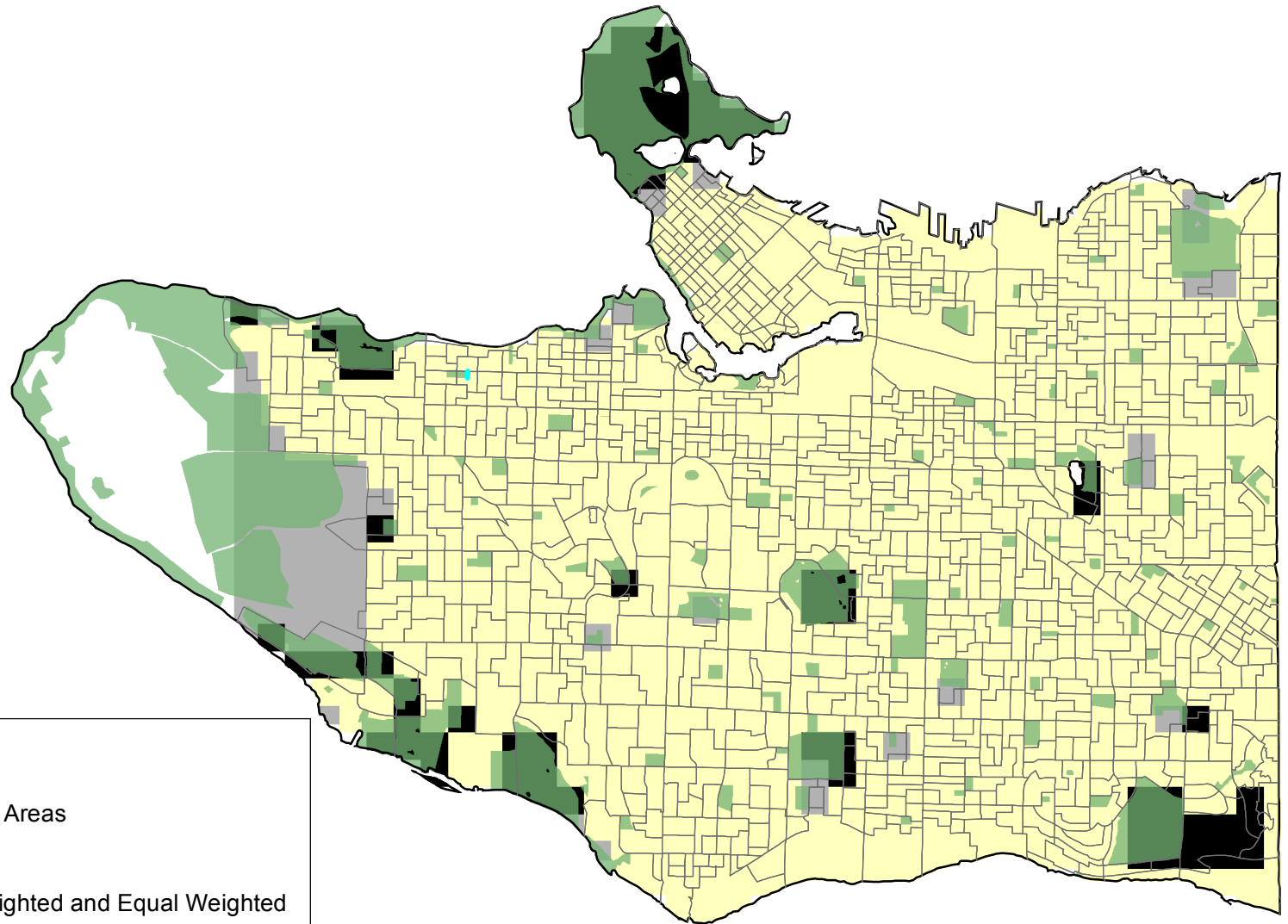
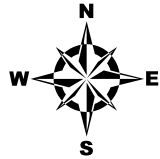


# Best Parks for Skyviewing in City of Vancouver

Using Land Use and Light Intensity



## Legend

- Vancouver Dissemination Areas
- City of Vancouver Parks
- Ideal Areas from both Weighted and Equal Weighted
- Results from Equal Weighting
- Poor Viewing Areas

0 1.25 2.5 5 km 1 cm = 1 km

Coordinate System: NAD 1983 UTM Zone 10N  
Projection: Transverse Mercator  
Datum: North American 1983