

VPL CENTRAL LIBRARY SQUARE - ROBSON ST & HOMER ST

FRIDAY MAY 11 12:00-16:00

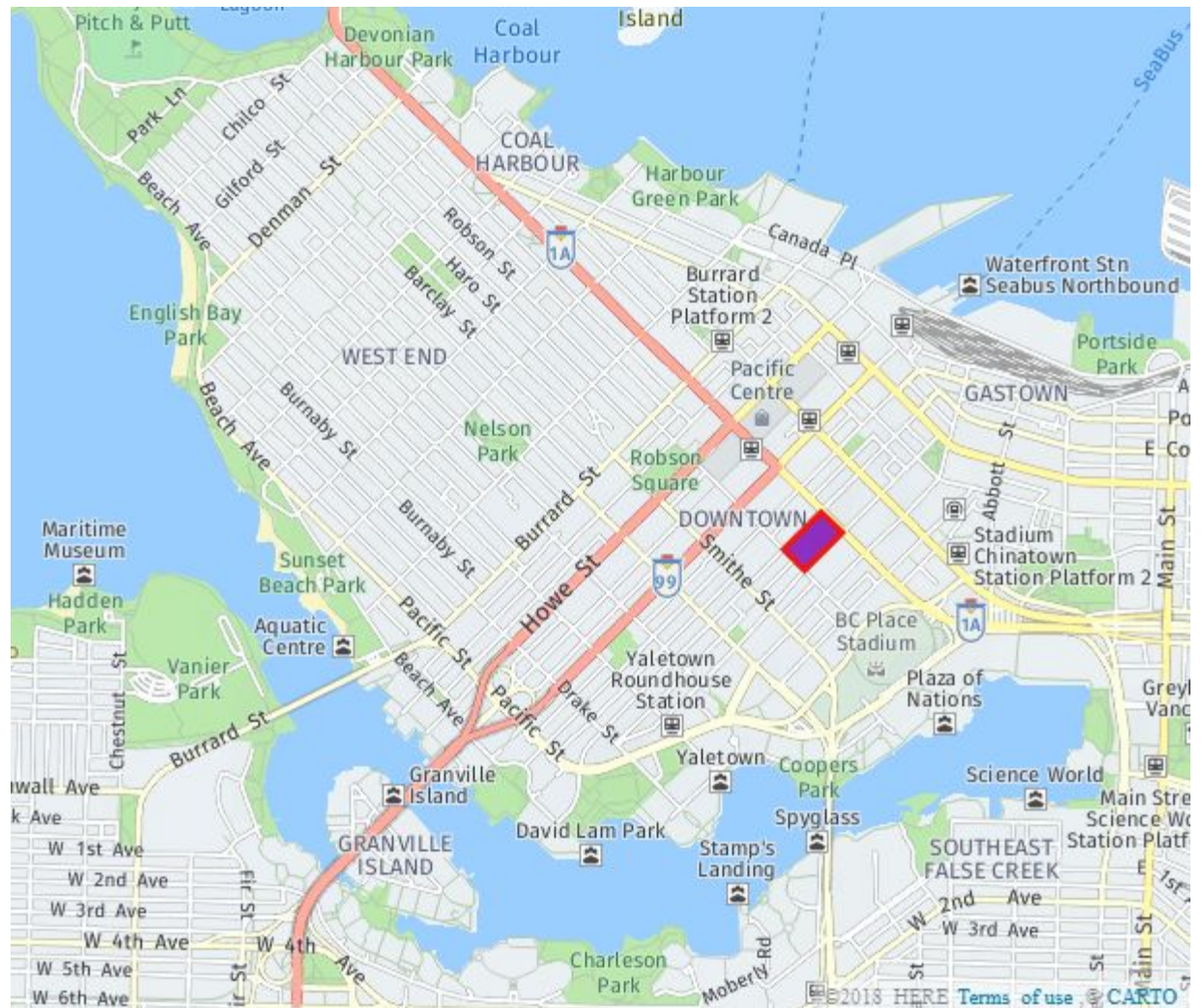
SATURDAY MAY 12 12:00-16:00

Sarah Labahn, Tadayori Nakao, Lily Raphael, Stella Zhou

CONTEXT MAP

City Scale

- Locate at the central-east side of downtown peninsula
- Walking distance to major skytrain station such as Vancouver City Centre, Granville and Waterfront
- Close to major local streets such as Granville, Cambie, West Georgia and Robson Street.
- Connections to BC Regional Highway 1A, 7A and 99.
- Nearby major public space include: Vancouver Art Gallery Plaza, Robson Square, Queen Elizabeth Theatre, Victory Square, BC Place, etc.



METHODOLOGY

- Moving data collected along Robson street
- One observer facing North and the other facing South
- Ten-minute intervals



CONTEXTUAL INFORMATION

Sunny, no rain, 22 degrees celsius

HIGHLIGHTS FROM MOVING OBSERVATION

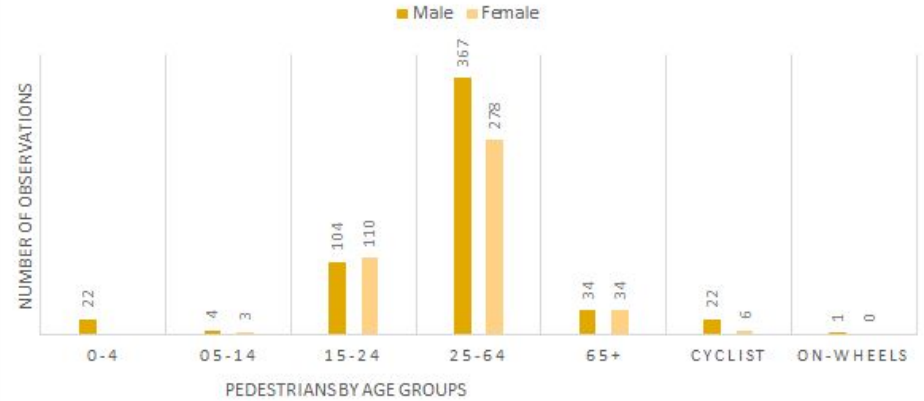
Friday

- Lots of office people walked passed during first two hours (people on lunch break).
- Civic work (square maintenance & cleaning) happening at South Plaza Square.
- People popping out of alleyway.

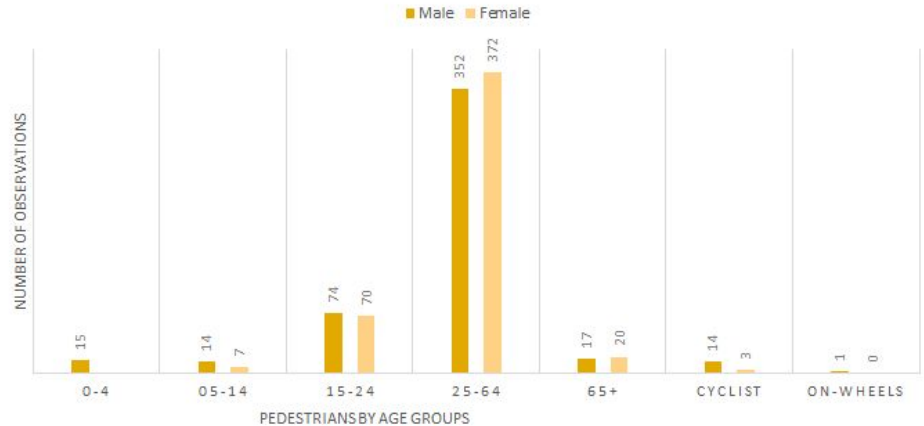
Saturday

- Lots of people going to eat at nearby restaurants
- Large flow of people after bus would come by
- North and South side of the street equally as busy

AGE AND GENDER OF PEOPLE MOVING - MAY 11

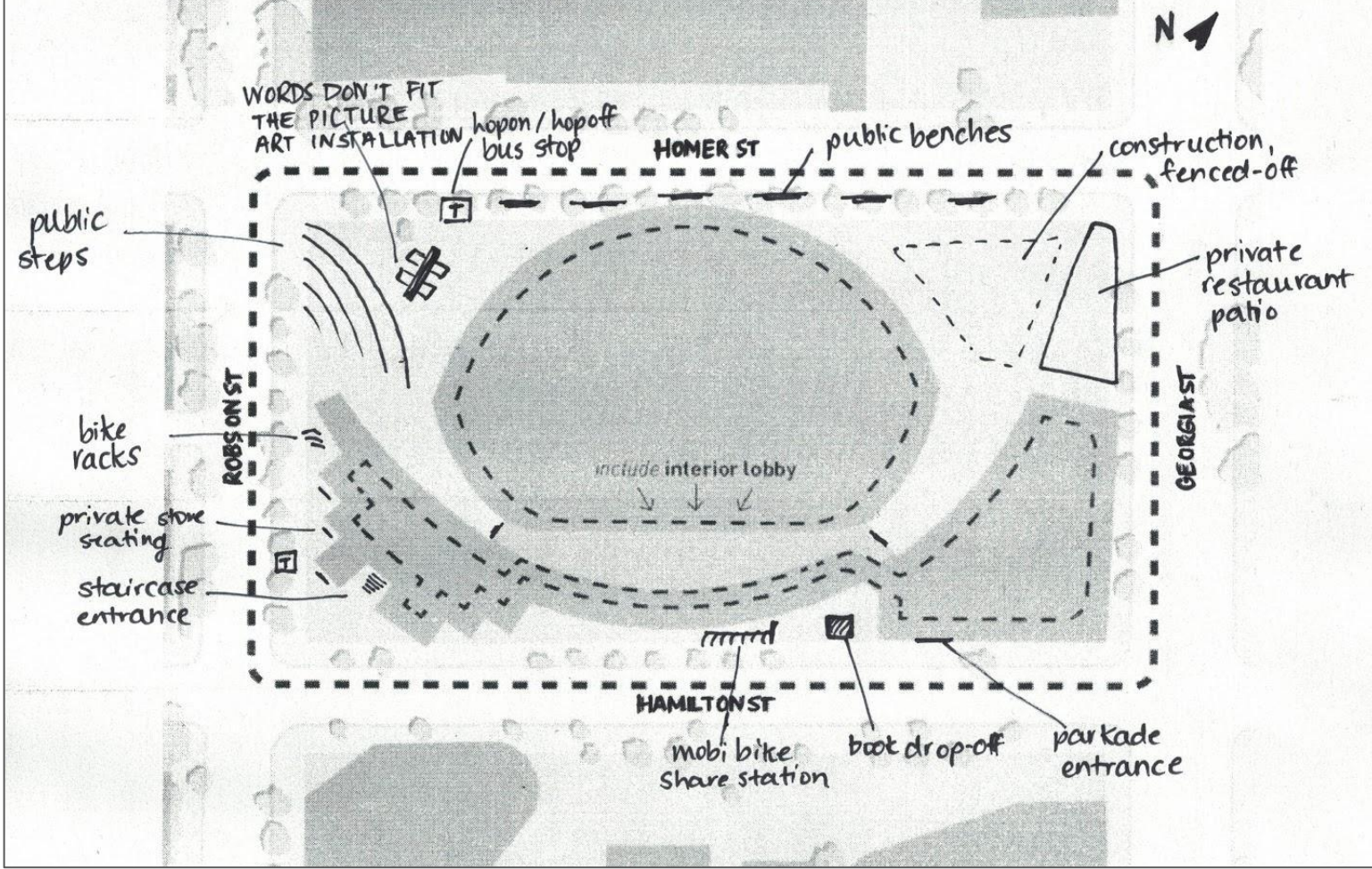


AGE AND GENDER OF PEOPLE MOVING - MAY 12



CONTEXT MAP

Block Scale,
Annotated

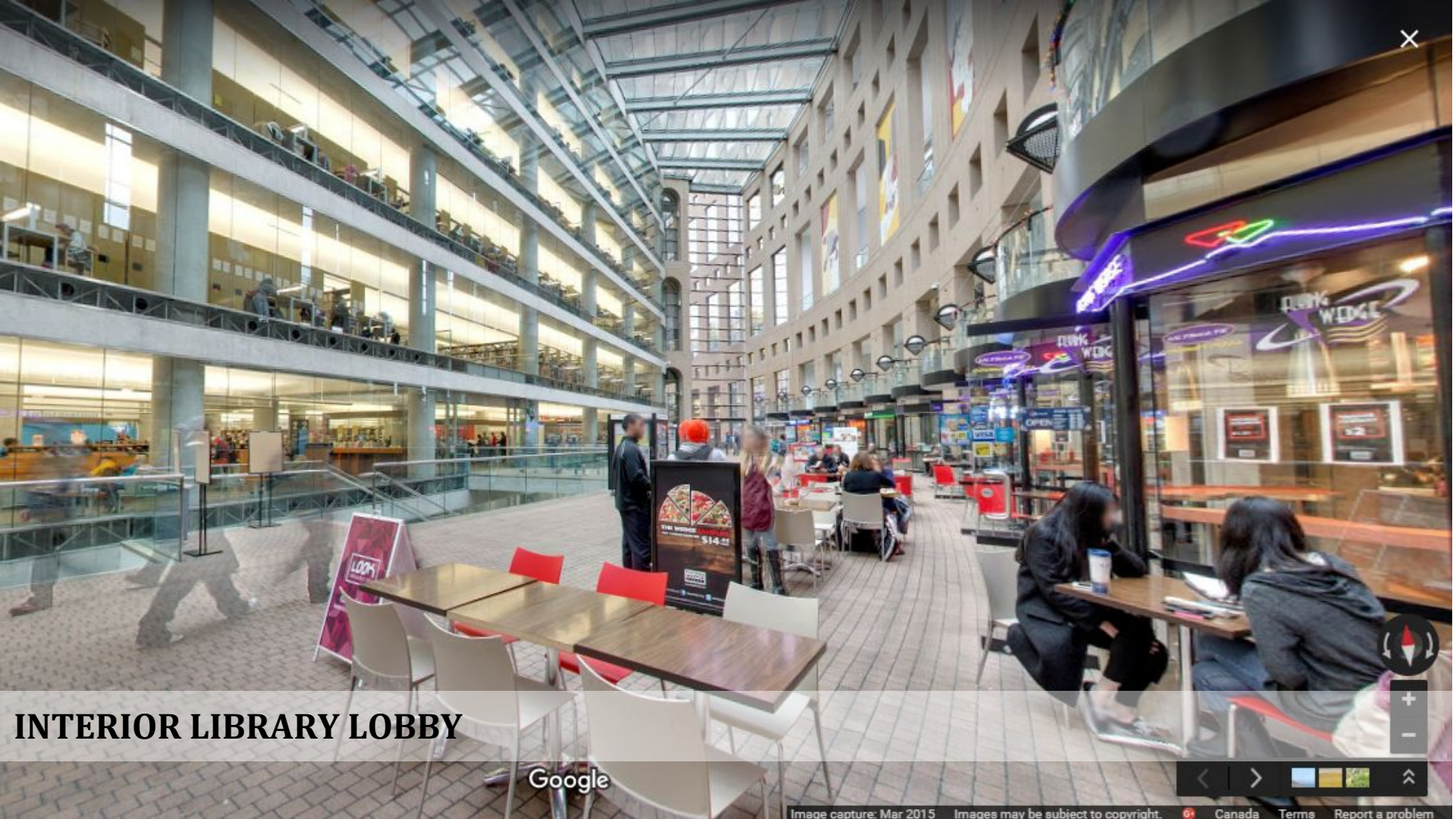


CONTEXT MAP diagram with notes of contextual information of library square, including seating, entrances, bus stops, and other observations.

EXTERIOR LIBRARY SQUARE (SOUTH)

Google

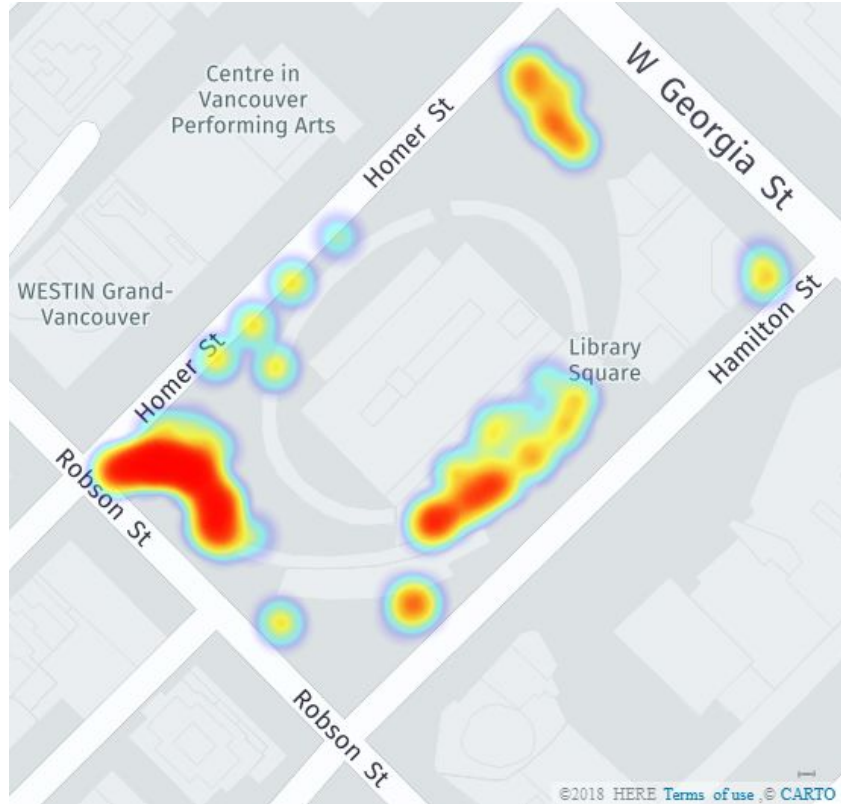




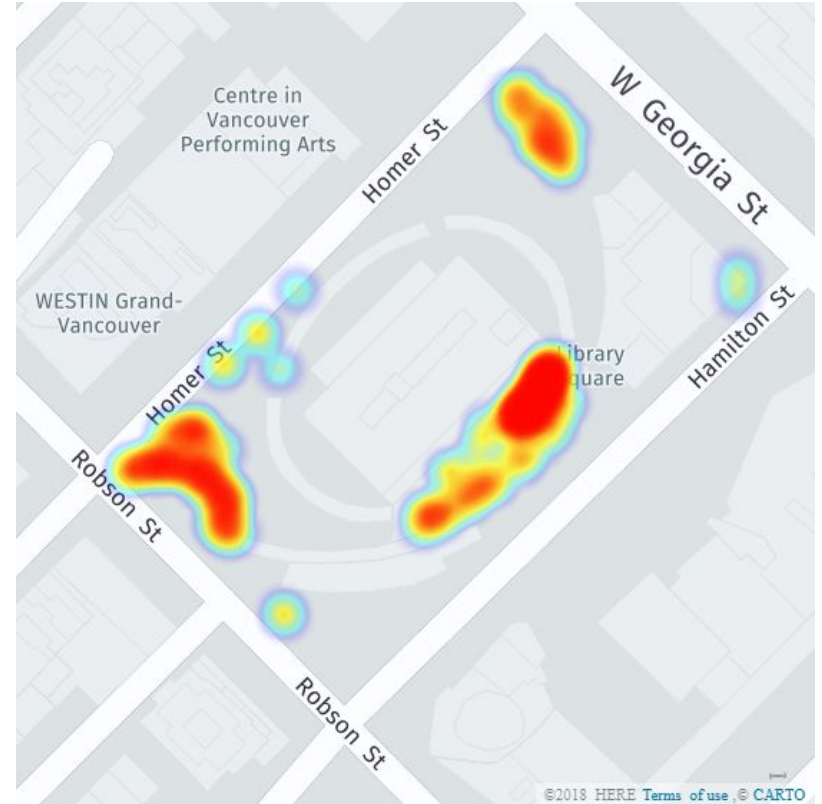
INTERIOR LIBRARY LOBBY

Google

STATIONARY PEOPLE VISUAL DISTRIBUTION



Heat Map A Friday May 11th 12:00-16:00



Heat Map B Saturday May 12th 12:00-16:00

STATIONARY PEOPLE - MAPPING ACTIVITY

ASPECTS OF ACTIVITIES NOT SHOWN ON MAPS

- Distribution of people sitting formally/informally, and publically/commercial
- Gender and age
- Type of activity people are engaged in
- Southwest entrance to library most used

LIST OF ACTIVITIES ON FRIDAY/SATURDAY

LIBRARY SQUARE

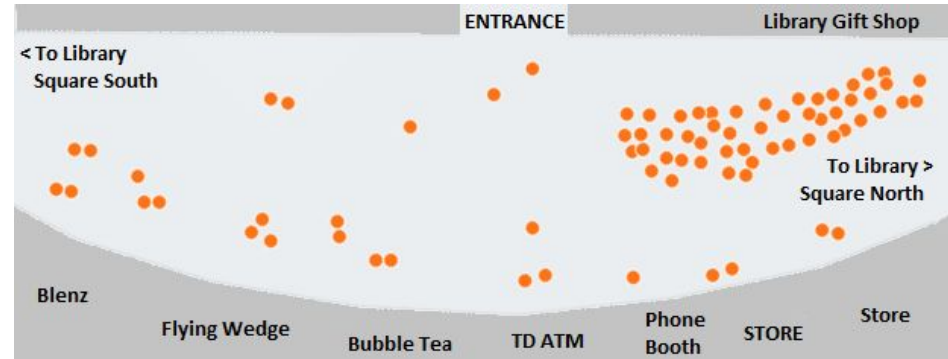
- Eating
- Reading
- Using electronics
- Dance mob
- Playing guitar
- Walking through square
- Waiting for bus (public and hop on hop off)

LIBRARY LOBBY

- Book fair
- Eating
- Playing chess
- Using electronics
- Walking in/out of library

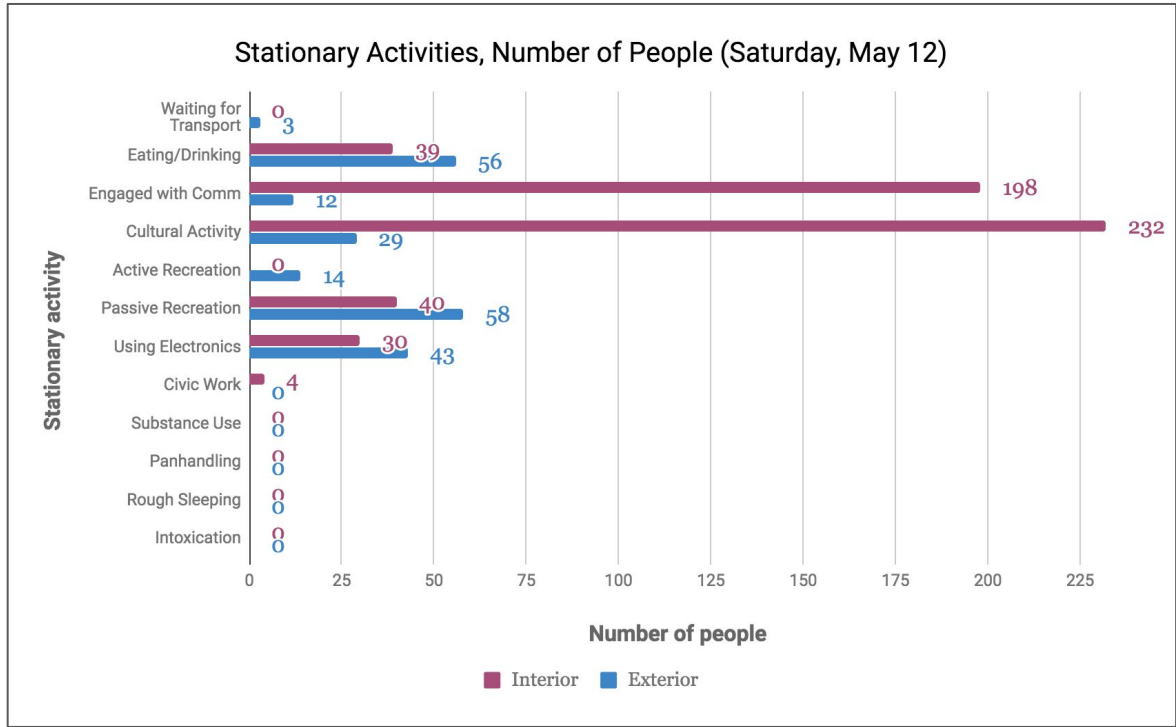


MAP A showing the positions of people on the plaza, near the corner of Homer/Robson

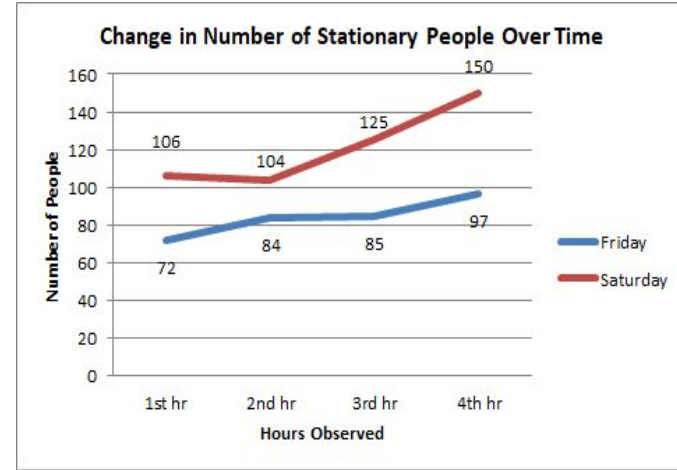


MAP B showing the positions of people in the library lobby

STATIONARY PEOPLE - NUMBERS AND ACTIVITIES



Graph A Number of stationary people and activities on the exterior (around library square) and on the interior (in the library lobby)



Graph B Number of stationary people over observation period on Friday and Saturday

APPLICATIONS AND LESSONS LEARNED FOR BARCELONA

RAMBLA DEL POBLENOU

Stretches 1km from the Gran Via de les Corts Catalanes (Great Way of the Catalans Court) to the platja del Bogatell (Bogatell beach)



Adaptation, addition, and elimination of categories

Understanding the use of space by locals and visitors from the perspective of student tourists

Scaling the moving and stationary observations along the entire Rambla del Poblenou and analyzing the data as a neighbourhood, not a specific site

Who is predominantly using the space?

How was the space designed for public use?

Who wants to occupy and use the space? In what ways? Are these tensions evident?