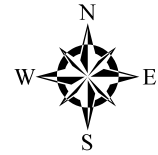
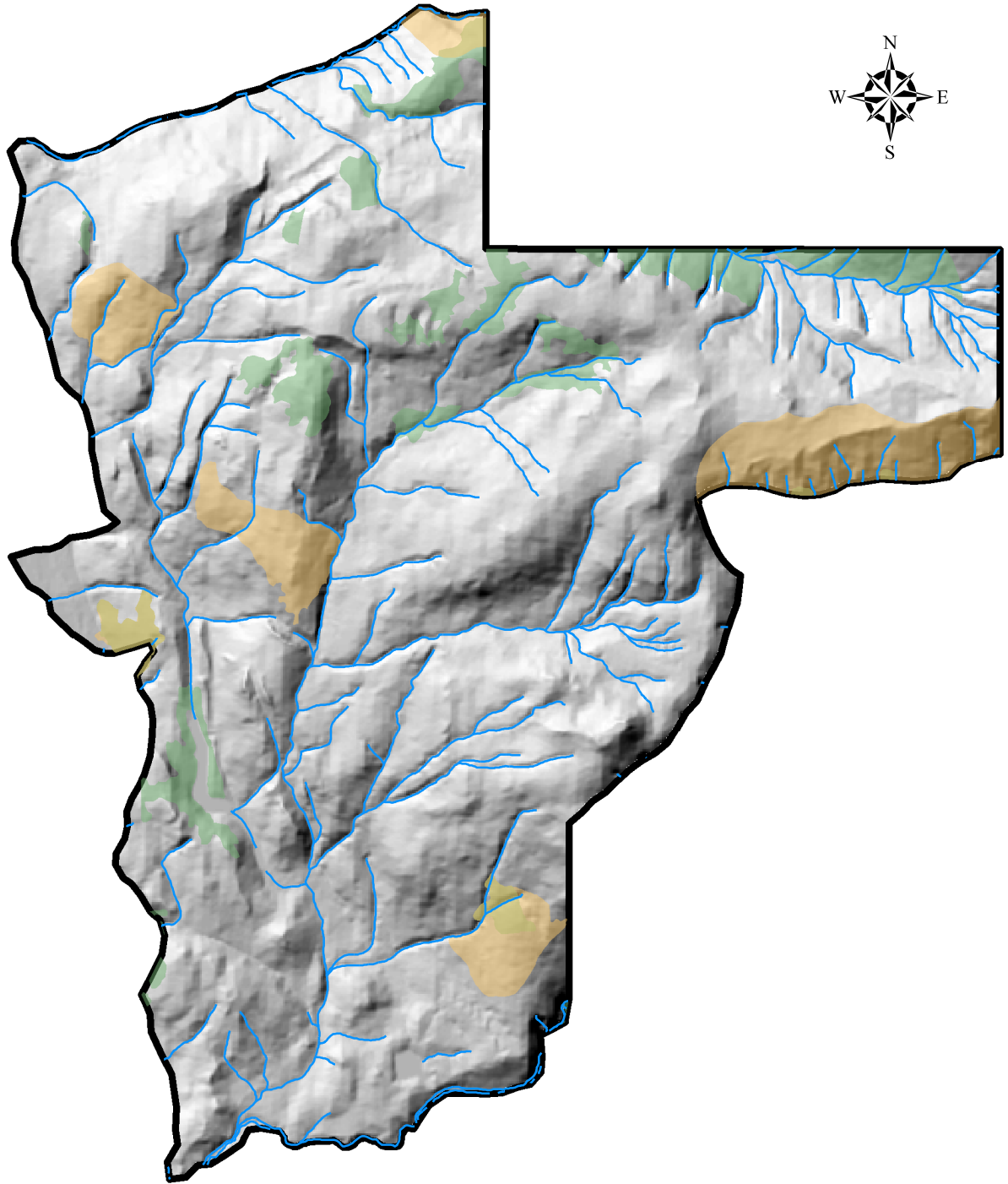






Hillshade of Potential Ski Resort in Squamish

With Rivers, Old Growth Forests, and Ungulate Areas

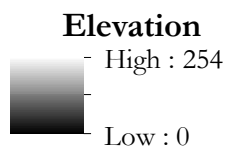


0 0.75 1.5 3 km

A horizontal scale bar with tick marks at 0, 0.75, 1.5, and 3 km.

-  Ungulated Winter Range
-  Old Growth Management Area
-  Rivers
-  Project Boundary

Hillshade



Coordinate System: NAD 1983 UTM Zone 10N
Projection: Transverse Mercator
Datum: North American 1983
Source: DataBC
Units: Meter

Stephanie Grondin
Geob 270