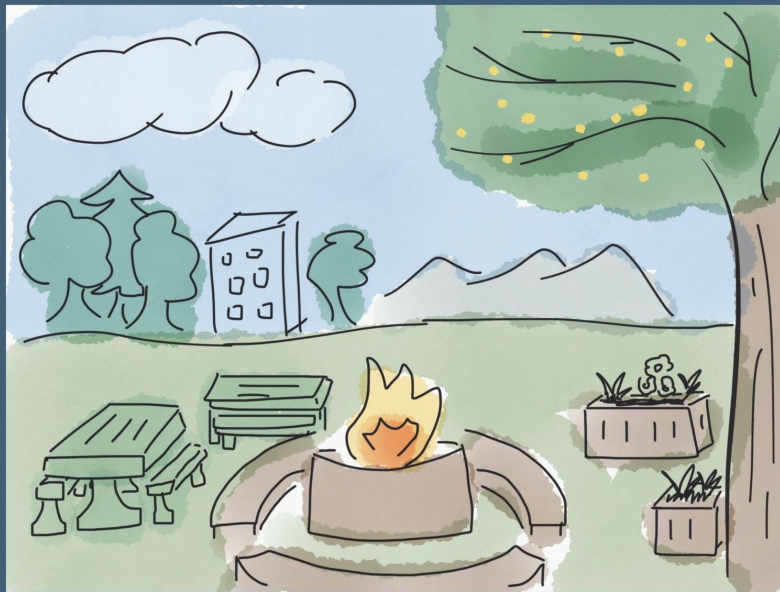




SPARK IN THE PARK



providing a communal campfire to quilchena park

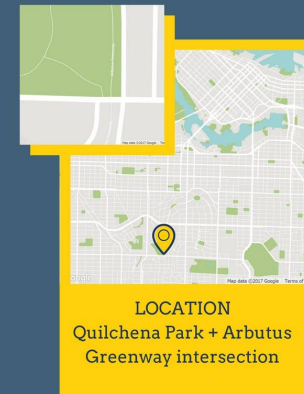


OUR VISION

We envision creating a space where community members can enjoy the warmth and comfort of campfire in an urban park setting. In addition to the campfire, there will be colorful picnic tables, planters for gardening and string lights.

Why a fire? Fire has been a central element to human existence, it represents community gathering, sharing stories and music, and providing warmth.

The circular design of the pit will promote sharing and engagement, while the surrounding elements create cohesiveness and permeability.



COMMUNITY ENGAGEMENT

Programming of the space will include campfire music nights, gardening days, community barbecues. Its is a flexible space that can be used in all seasons both day and night



Stephanie Grondin,
Natalie Manitus,
Brian Tan,
Cassandra Adjety



Course: PLAN 211
City-Making: A
Global Perspective

Instructor:
Su-Jan Yeo

CITYSTUDIO

*CityStudio Vancouver is an innovation and experimentation hub for the City of Vancouver in collaboration with seven of Vancouver's post-secondary institutions (BCIT, ECUAD, Langara, SFU, UBC, VCC and NEC). Since 2011 CityStudio has contributed more than 100,000 hours of experiments, projects and skills training to support City goals and strategies like the Greenest City Action Plan and Healthy City for All strategy. Learn more @CityStudioVan.