

adding hotspot on an image

1. Right click on the image you wish to add a hotspot to.



2. Select 'Insert Hotspot'. A new window displays.



3. Select the type of link you wish to add in the 'Type' dropdown menu.

Popup

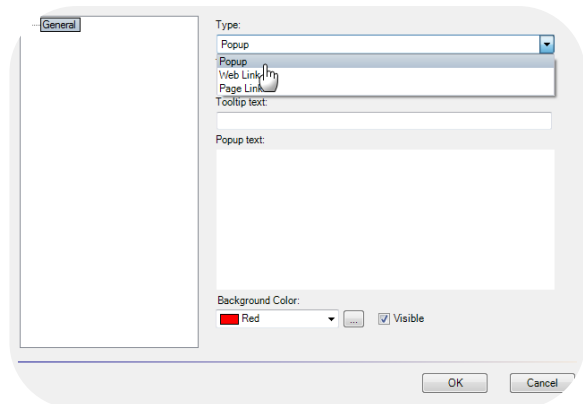
- a new window will pop up when the user clicks the hotspot

Web Link

- for linking to a web page

Page Link

- for linking to a page within the course



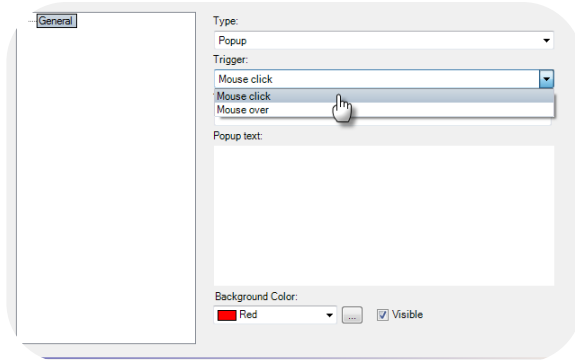
4. Select the type of trigger.

Mouse click

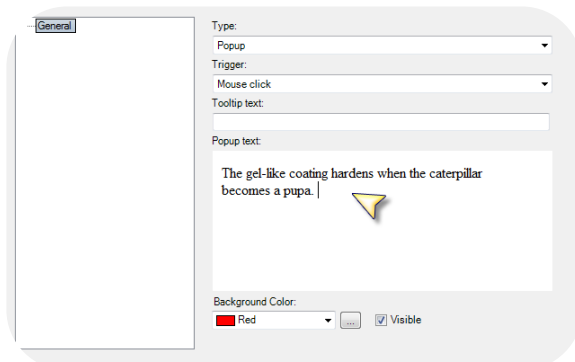
- The hotspot is activated when the user clicks the hotspot

Mouse over

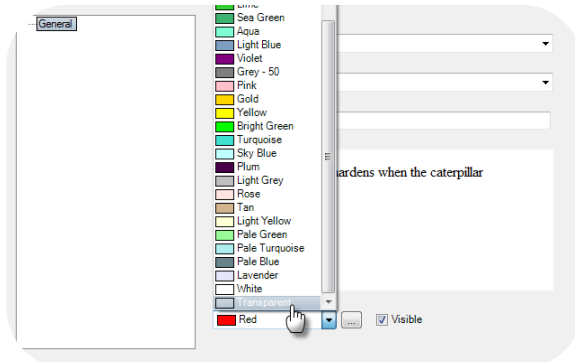
- The hotspot is activated when the user hover over the hotspot with the cursor



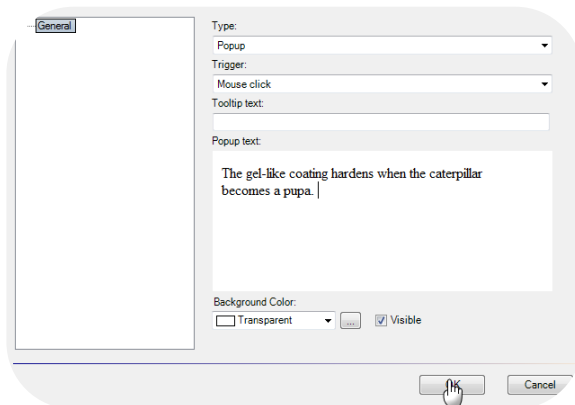
5. Type in the text you wish to display when the user trigger this hotspot.



6. Select the background colour for the hotspot from the 'background colour' drop down menu.



7. Click 'OK'.



8. The hotspot appears on your picture.



9. Move the hotspot to a desired location.

