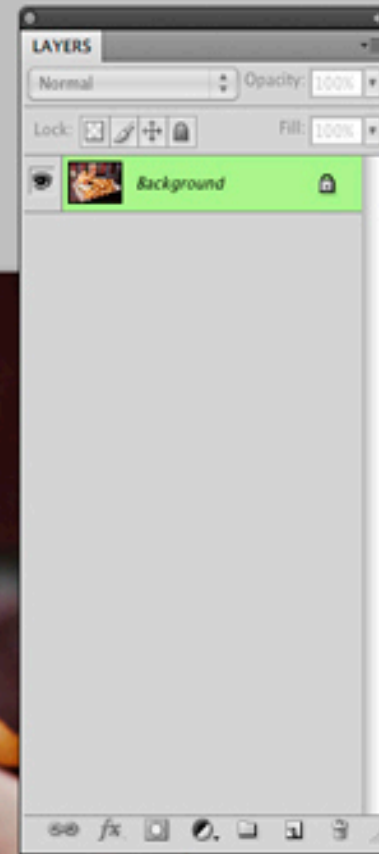
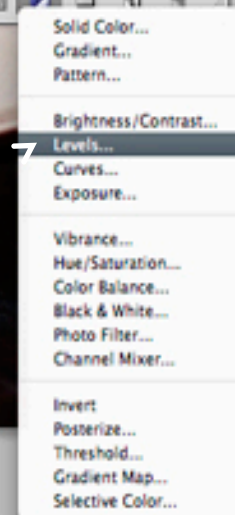
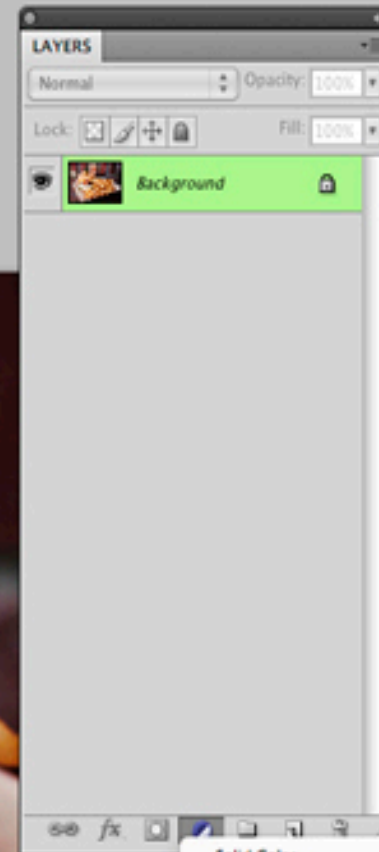


MASKING
in
ADJUSTMENT LAYERS

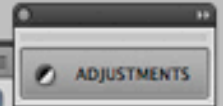
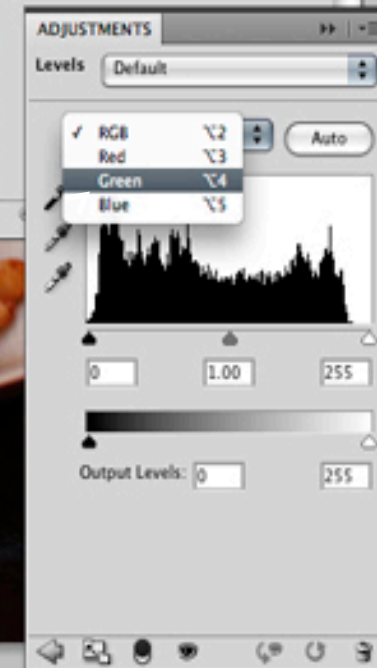
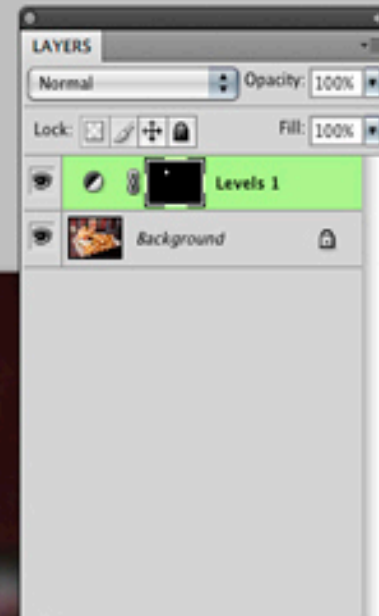
What if you wanted to adjust just a small area of your image?
Maybe make this Olive a bit more earthy red, like the bricks behind it.



Start off by selecting the area you would like to isolate and then make colour changes on. I dragged by lasso tool around the olive to make my selection, it looks like crawling white ants are around the area when it is selected.

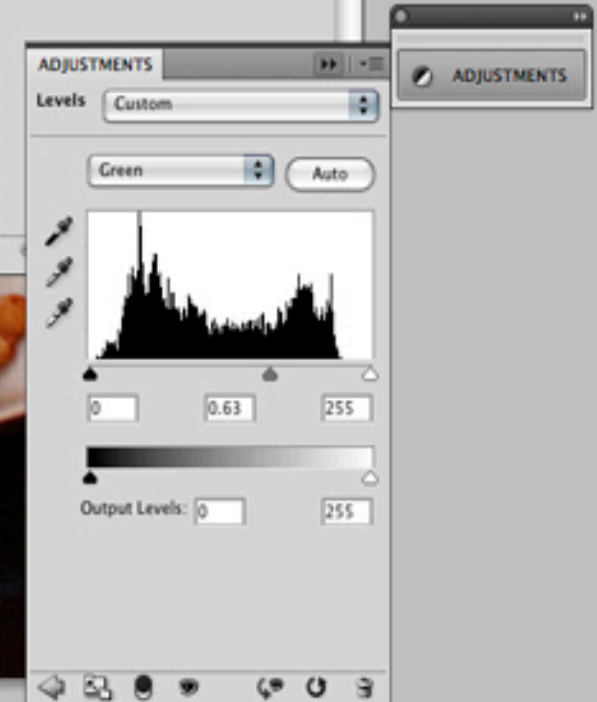
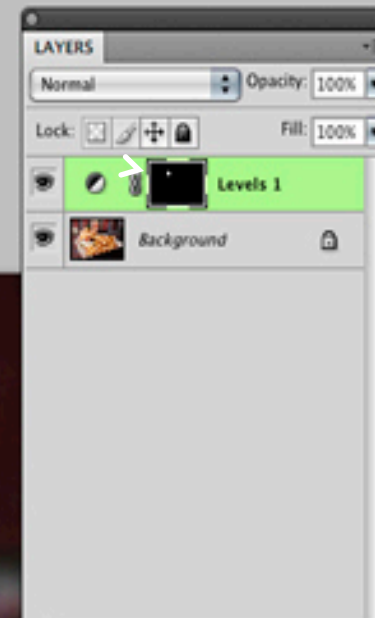


While selected, create an adjustment layer by going to the bottom of your layer palette and clicking on the circle that is half white and half black. Let's make this a **Levels Adjustment Layer**.



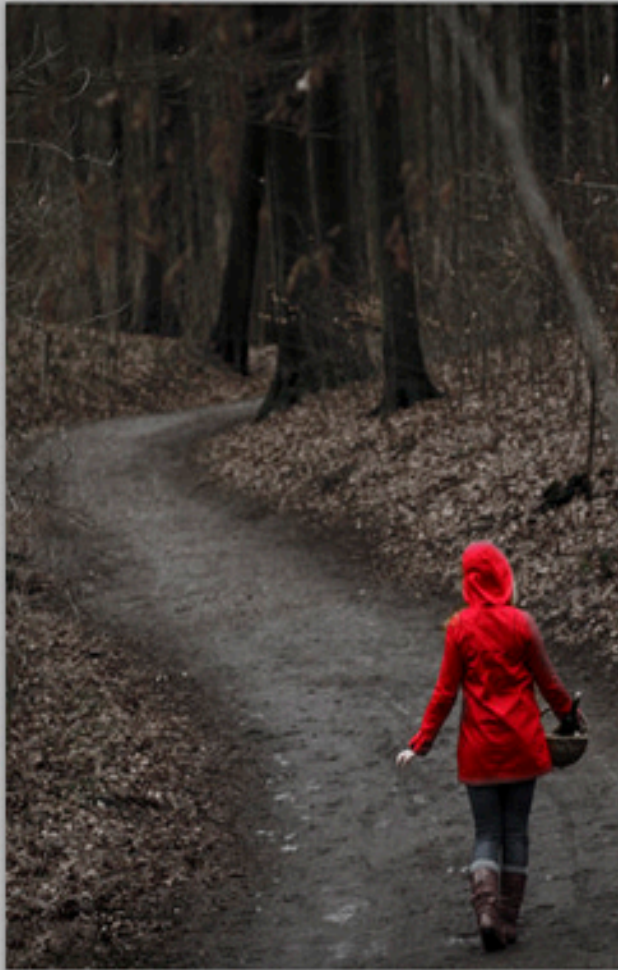
To adjust the Green Hue on the olive and combat it with a bit of Magenta, select the **Green Channel** and adjust the level there. Slide your slider to the left or right to make it more or less magenta.

The olive is now a lot more red than it was before. That is because our selection created a **MASK** on our **adjustment layer**, and changes on that adjustment layer would only show on the clear (white) parts of the mask. You can see here a small area (the olive) is white, therefore the adjustment layer changes only take effect on that area.





Let's try making an image to represent Little Red Riding Hood. We are going to de-saturate everything else in this image but the red coat. First select everything you want to change. (Hint: I selected her coat and then went to "select inverse" in the selection menu to make it easier).



Then click on the **Adjustment Layer** icon at the bottom of the Layers Palette and choose **Hue/Saturation**. You will notice that as you slide your Saturation level down, the background becomes de-saturated, making her coat an intense red.

