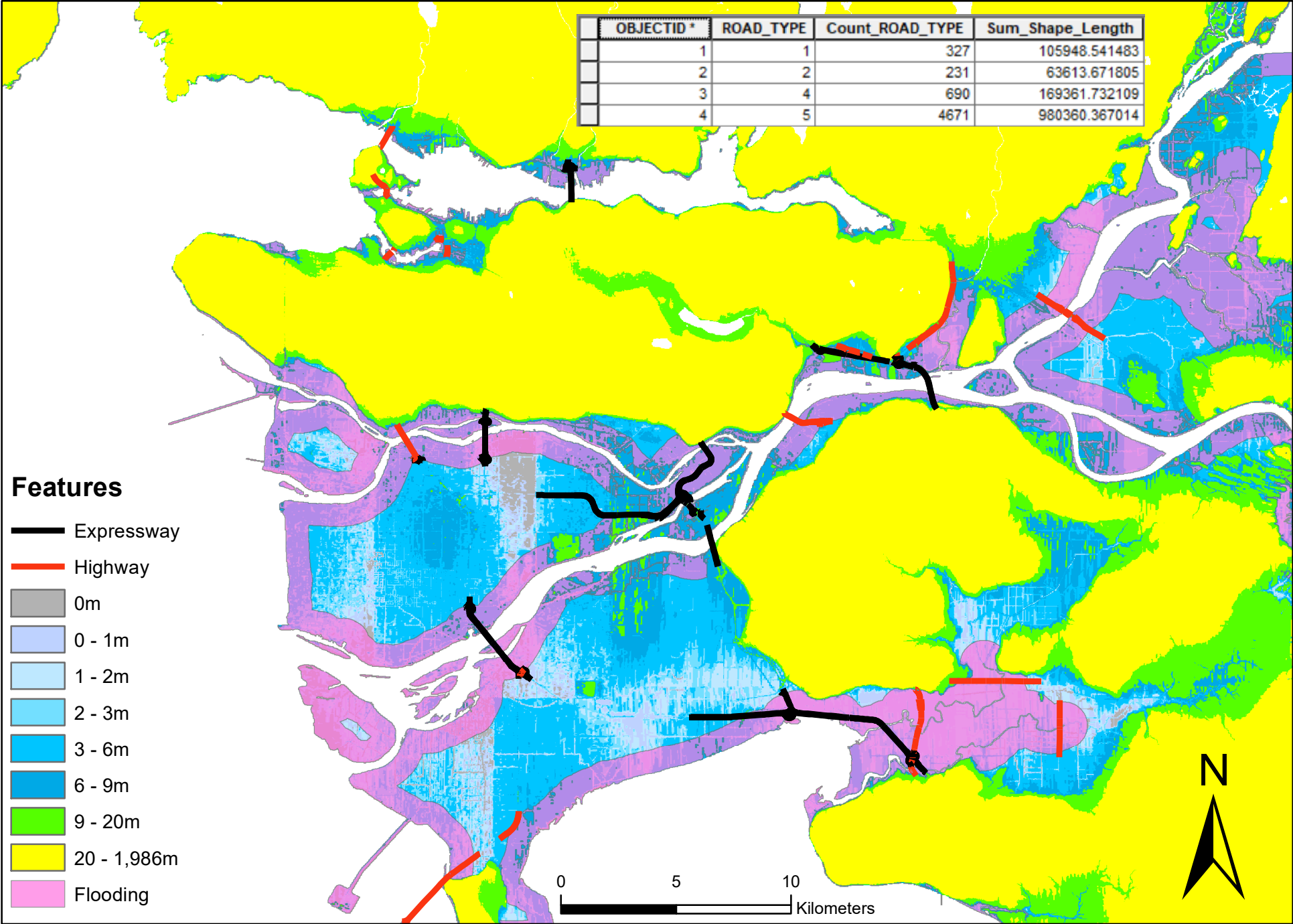


# Potential Flood-affected Highways and Expressways in Greater Vancouver



Generated by Yassen Atallah, the University of British Columbia, using ESRI's ArcGIS Desktop 10.6.1. February 13, 2019. Source: Open Data Canada, StatCan, CanMap.

\*Map of potential flooding based on a projected storm surge of 6 meters within 1 km of shoreline.